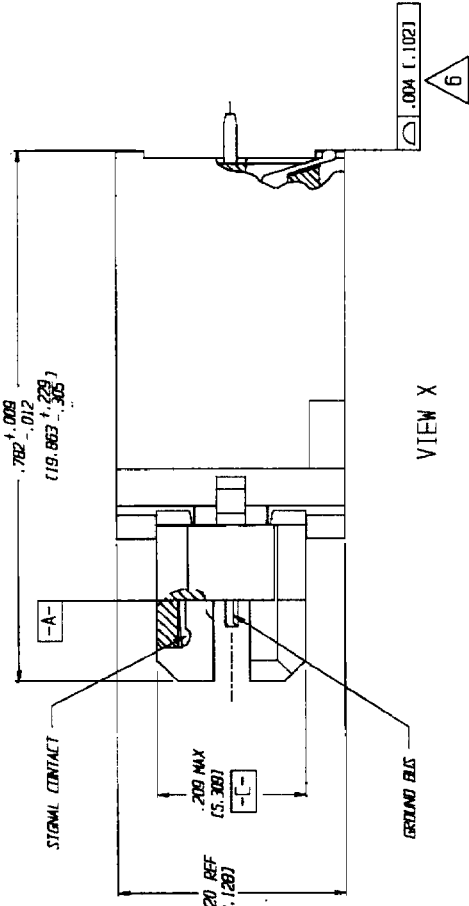
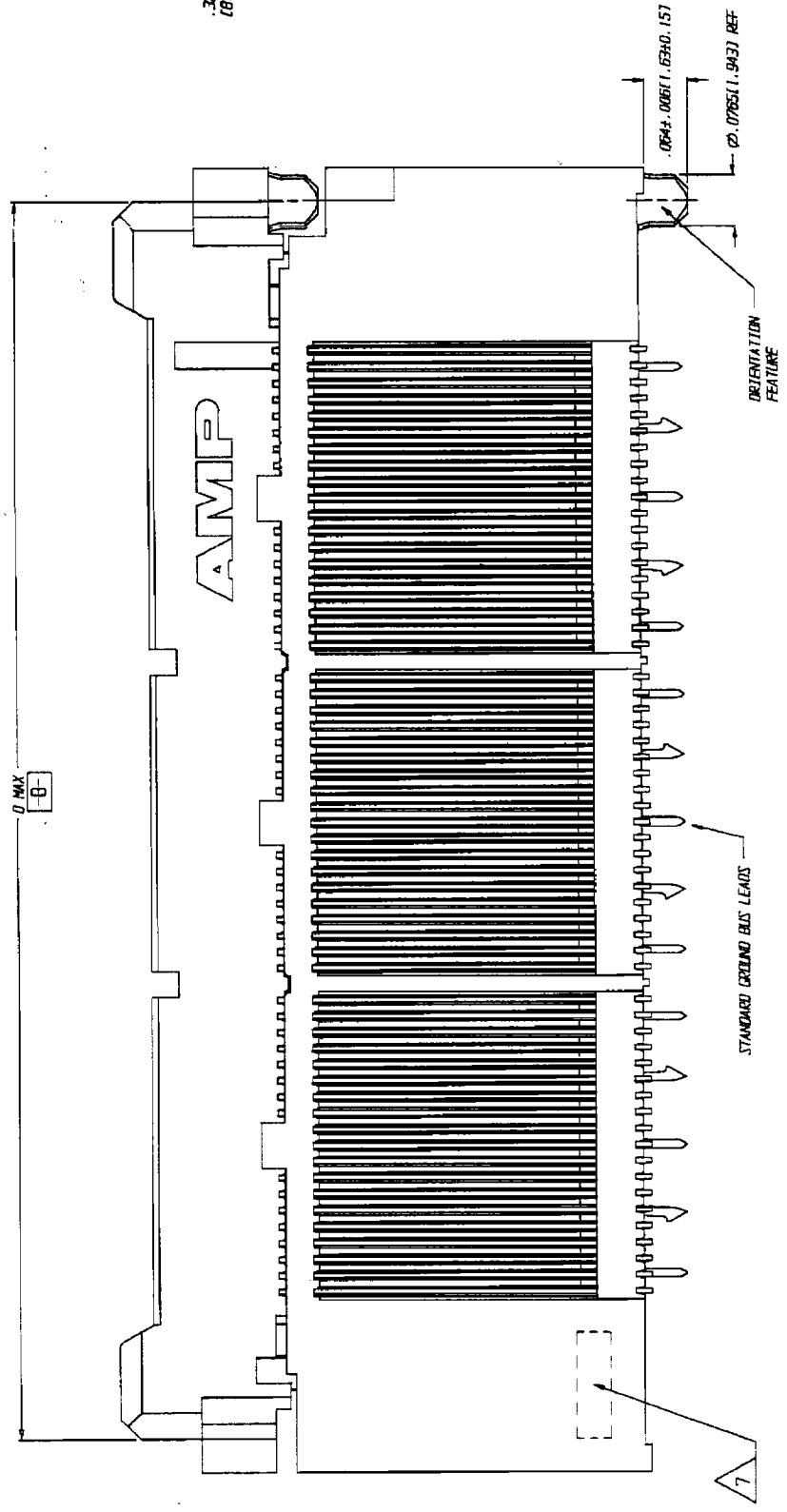
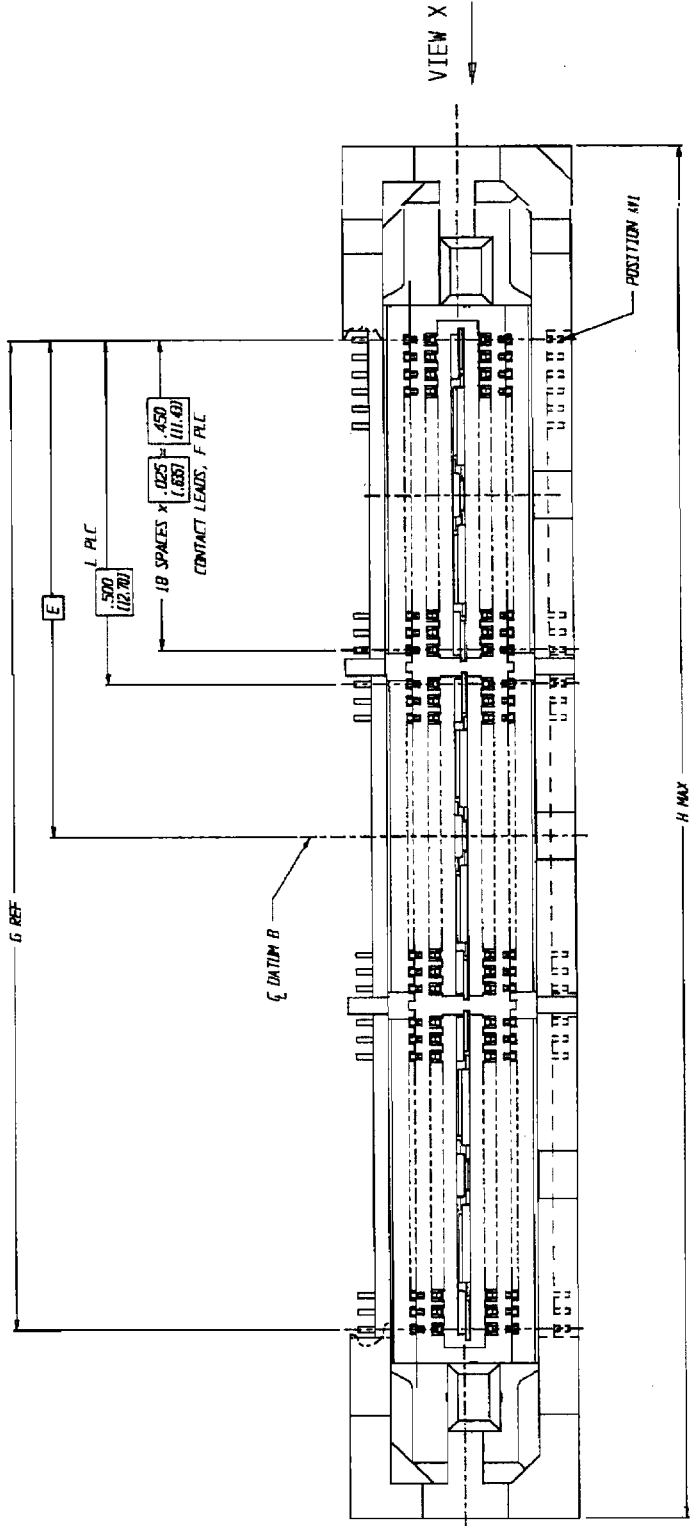


1 2 3 4 5 6 7 8

DRAWING MADE IN THIRD ANGLE PROJECTION
 THIS DRAWING IS UNPUBLISHED. RELEASE FOR PUBLICATION
 BY AMP INCORPORATED, HARRISBURG, PA. ALL UNPUBLISHED RIGHTS
 RESERVED. AMP PRODUCTS MAY BE COVERED BY U.S. AND FOREIGN PATENTS AND/OR PATENT PENDING.

LOC	DATE	BY	DESCRIPTION
AD 47	2-19-88	J	REVISED PER EC 04-90-0025-98

1. 767032-3 SHOWN
2. HOUSING: LIQUID CRYSTAL POLYMER, 30% GLASS.
 CONTACT: BERYLLIUM COPPER, UNS C17510, TEMPER TMO4.
 GROUND BUS: BRASS, UNS 26000, 1/4 HARD TEMPER.
 CONTACT & BUS: .000070-.000175 (.001778-.004445) THK NICKEL, ALL OVER;
 .000150-.000250 (.003810-.006350) THK 60/40 SnPb, LEADS;
 .000030 (.000762) MIN THK GOLD, INTERFACE.
4. SOLDER PASTE RECOMMENDATION: SOLDER TO BE PLACED ON
 PADS AND GROUND VIAS (INCLUDING ANNULAR RING), SAME AS
 FEATURE SIZE; ON CONNECTOR SIDE ONLY.
5. SOLDER RESIST RECOMMENDATION: RESIST TO BE PLACED AROUND
 CONNECTOR PADS AND VIA ANNULAR RINGS.
6. ABOVE 190 POSITION THE CONNECTOR'S INTEGRAL
 BUS RETENTION FEATURE COMPENSATES FOR THE
 INHERENT BOW IN THE HOUSING. ONCE THE
 CONNECTOR IS PLACED ON THE PCB, COPLANARITY
 IS HELD TO .004" (.102mm).
7. DATE CODE MARKED IN AREA INDICATED ON SAME SIDE AS AMP LOGO.
 FOR SLIP-FIT APPLICATIONS, ORIENTATION HOLE TO BE
 Ø.0784-.0011 (.9830-.037).
- 8.



UNLESS OTHERWISE SPECIFIED DIMENSIONS ARE IN INCHES. DECIMALS TO ANGLES	DR. HASIRLOGLU 11/14/94	AMP INCORPORATED Harrisburg, Pa. 17105
MATERIAL	CHK J.E. SHIPE 11/14/94	NAME MICTOR
FINISH	APPD J. KORSUNSKY 11/14/94	788 (20.015) PLUG ASSY
	PRODUCT SPEC 108-1422	.025 (.635) CENTER LINE
	APPLICATION SPEC 114-11004	SIZE D 00779
	REWORK	DRAWING NO 767032
		SCALE B:1
		SHEET 1 OF 2

CUSTOMER DRAWING