

## FEATURES AND SPECIFICATIONS

### Features and Benefits

- Sizes 4 to 54 circuits
- End-to-end and side-to-side stackable for dual row connections to a 2.54mm (.100") pitch grid pin field

### Reference Information

Product Specification: PS-70058

Packaging: Bag

UL File No.: E29179

CSA File No.: LR19980

Mates With: 8624, 8723, 8724, 70029, 70203, 70204, 70227, 70260, 70280, 70287, 70567, 70568, 71308 and 71349 Molex dual row headers

Use With: 70058 and 71851 crimp terminals

Designed In: Inches

### Physical

Housing: Black glass-filled polyester, UL 94V-0

Operating Temperature: -40 to +105°C



# 2.54mm (.100") Pitch

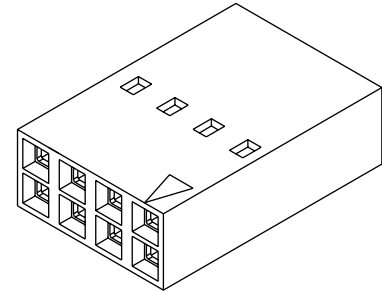
## SL™

## Crimp Housing

### 70450

### Dual Row

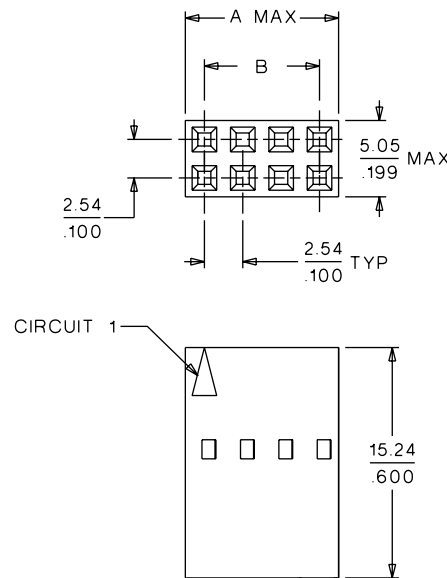
### Version A, Nonpolarized



2.54mm (.100") Pitch

## CATALOG DRAWING (FOR REFERENCE ONLY)

**Not For Use With C-Grid III™ Components**



Delivered on a carrier with 20 pieces per strip.

Actual Size



Universal Polarizing Pin  
40713-1

Order No. 15-04-0292

## ORDERING INFORMATION AND DIMENSIONS

Circuits	Order No.	Dimension	
		A	B
4	• 22-55-2041	5.05 (.199)	2.54 (.100)
6	• 22-55-2061	7.59 (.299)	5.08 (.200)
8	• 22-55-2081	10.13 (.399)	7.62 (.300)
10	• 22-55-2101	12.67 (.499)	10.16 (.400)
12	• 22-55-2121	15.21 (.599)	12.70 (.500)
14	• 22-55-2141	17.75 (.699)	15.24 (.600)
16	• 22-55-2161	20.29 (.799)	17.78 (.700)
18	• 22-55-2181	22.83 (.899)	20.32 (.800)
20	• 22-55-2201	25.37 (.999)	22.86 (.900)
22	• 22-55-2221	27.91 (1.099)	25.40 (1.000)
24	• 22-55-2241	30.45 (1.199)	27.94 (1.100)
26	• 22-55-2261	32.99 (1.299)	30.48 (1.200)
28	• 22-55-2281	35.53 (1.399)	33.02 (1.300)

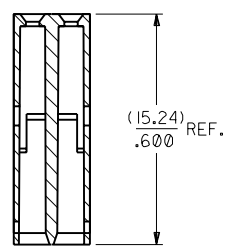
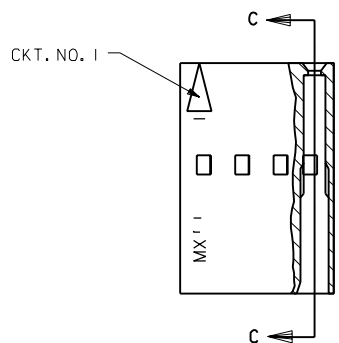
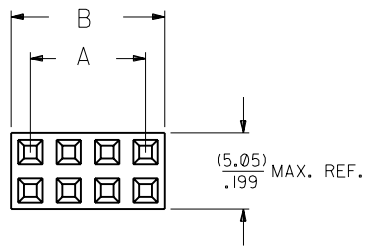
Circuits	Order No.	Dimension	
		A	B
30	• 22-55-2301	38.07 (1.499)	35.56 (1.400)
32	• 22-55-2321	40.61 (1.599)	38.10 (1.500)
34	• 22-55-2341	43.15 (1.699)	40.64 (1.600)
36	• 22-55-2361	45.69 (1.799)	43.18 (1.700)
38	• 22-55-2381	48.23 (1.899)	45.72 (1.800)
40	• 22-55-2401	50.77 (1.999)	48.26 (1.900)
42	• 22-55-2421	53.31 (2.099)	50.80 (2.000)
44	• 22-55-2441	55.85 (2.199)	53.34 (2.100)
46	• 22-55-2461	58.39 (2.299)	55.88 (2.200)
48	• 22-55-2481	60.93 (2.399)	58.42 (2.300)
50	• 22-55-2501	63.47 (2.499)	60.96 (2.400)
52	• 22-55-2521	66.01 (2.599)	63.50 (2.500)
54	• 22-55-2541	68.55 (2.699)	66.04 (2.600)

• US Standard Product, available through Molex franchised distributors

**NOTES:**

- 1) MATERIAL: G.F. POLYESTER
- 2) HOUSING TO BE USED WITH TERMINALS  
PT. NO. 70058-\*\*\*\* & 70028-\*\*\*\*
- 3) SEE CHART FOR CIRCUIT SIZES.
- 4) TO BE USED WITH (0.64)/.025 SQ. OR RD. PINS.
- 5) PARTS STACKABLE END TO END AND SIDE BY  
SIDE ON (2.54)/.100 CENTERS.
- 6) REFER TO PRODUCT SPECIFICATION PS-70058.
- 7) PACKAGE PER PK-70450-100.

-OPTION "A"-



CKT. SIZE	EDP. NO.	ENG. NO.	A	B
4	022-55-2041	70450-0001	(2.54) .100	(5.05) .199
6	022-55-2061	70450-0002	(5.08) .200	(7.59) .299
8	022-55-2081	70450-0003	(7.62) .300	(10.13) .399
10	022-55-2101	70450-0004	(10.16) .400	(12.67) .499
12	022-55-2121	70450-0005	(12.70) .500	(15.21) .599
14	022-55-2141	70450-0006	(15.24) .600	(17.75) .699
16	022-55-2161	70450-0007	(17.78) .700	(20.29) .799
18	022-55-2181	70450-0008	(20.32) .800	(22.83) .899
20	022-55-2201	70450-0009	(22.86) .900	(25.37) .999
22	022-55-2221	70450-0010	(25.40) 1.000	(27.91) 1.099
24	022-55-2241	70450-0011	(27.94) 1.100	(30.45) 1.199
26	022-55-2261	70450-0012	(30.48) 1.200	(32.99) 1.299
28	022-55-2281	70450-0013	(33.02) 1.300	(35.53) 1.399
30	022-55-2301	70450-0014	(35.56) 1.400	(38.07) 1.499
32	022-55-2321	70450-0015	(38.10) 1.500	(40.61) 1.599
34	022-55-2341	70450-0016	(40.64) 1.600	(43.15) 1.699
36	022-55-2361	70450-0017	(43.18) 1.700	(45.69) 1.799
38	022-55-2381	70450-0018	(45.72) 1.800	(48.23) 1.899
40	022-55-2401	70450-0019	(48.26) 1.900	(50.77) 1.999
42	022-55-2421	70450-0020	(50.80) 2.000	(53.31) 2.099
44	022-55-2441	70450-0021	(53.34) 2.100	(55.85) 2.199
46	022-55-2461	70450-0022	(55.88) 2.200	(58.39) 2.299
48	022-55-2481	70450-0023	(58.42) 2.300	(60.93) 2.399
50	022-55-2501	70450-0024	(60.96) 2.400	(63.47) 2.499
52	022-55-2521	70450-0025	(63.50) 2.500	(66.01) 2.599
54	022-55-2541	70450-0026	(66.04) 2.600	(68.55) 2.699

REVISED PER ECR # U00293 07-13-90 MGB/DJK		DIMENSIONS SHOWN (METRIC) INCH UNLESS OTHERWISE SPECIFIED TOLERANCES: ANGULAR ± 1/2°		▽ = 0    ▼ = 0    REVISE ONLY ON CAD SYSTEM	
F	ADD PKG NOTE PER UDT2000-0468 SCHAFFER 99/12/1	C	ADD NOTE 6 PER ECR #10059 05/01/87 MJM/JAS	5 PLACE ± .010    --- 2 PLACE ± .014 ± 0.25 1 PLACE --- ± 0.35	
E	REVISED PER ECN UDT1999-0722 R.S.FOX 99/03/09	B	REDRAWN ON CAD PER ECR #9296 10/22/86 MJM	DRAFT WHERE APPLICABLE MUST REMAIN WITHIN DIMENSIONS	
LTR.	REVISIONS	LTR.	REVISIONS	DRWG. NO. SD-70450-0001-0026 FILE NAME S70450X1 DRG	SHEET NO. 1 OF 1 DATE 10/22/86 U.S.A.
DRWG. BY MJM    CHK'D. BY MJM APP'D. BY WAZ    SCALE 4:1				THIS DRAWING CONTAINS INFORMATION THAT IS PROPRIETARY TO MOLEX INC. AND SHOULD NOT BE USED WITHOUT WRITTEN PERMISSION.	