

Dual Channel Power Driver

FEATURES

- Two independent Drivers
- 1.5A Totem Pole Outputs
- Inverting and Non-Inverting Inputs
- 40ns Rise and Fall into 1000pF
- High-Speed, Power MOSFET Compatible
- Low Cross-Conduction Current Spike
- Analog Shutdown with Optional Latch
- Low Quiescent Current
- 5V to 40V Operation
- Thermal Shutdown Protection
- 16-Pin Dual-In-Line Package
- 20-Pin PLCC and CLCC Package

DESCRIPTION

The UC1707 family of power drivers is made with a high-speed Schottky process to interface between low-level control functions and high-power switching devices - particularly power MOSFETs. These devices contain two independent channels, each of which can be activated by either a high or low input logic level signal. Each output can source or sink up to 1.5A as long as power dissipation limits are not exceeded.

Although each output can be activated independently with its own inputs, it can be forced low in common through the action either of a digital high signal at the Shutdown terminal or a differential low-level analog signal. The Shutdown command from either source can either be latching or not, depending on the status of the Latch Disable pin.

Supply voltage for both VIN and VC can independently range from 5V to 40V.

These devices are available in two-watt plastic "bat-wing" DIP for operation over a 0°C to 70°C temperature range and, with reduced power, in a hermetically sealed cerdip for -55°C to +125°C operation. Also available in surface mount DW, Q, L packages.

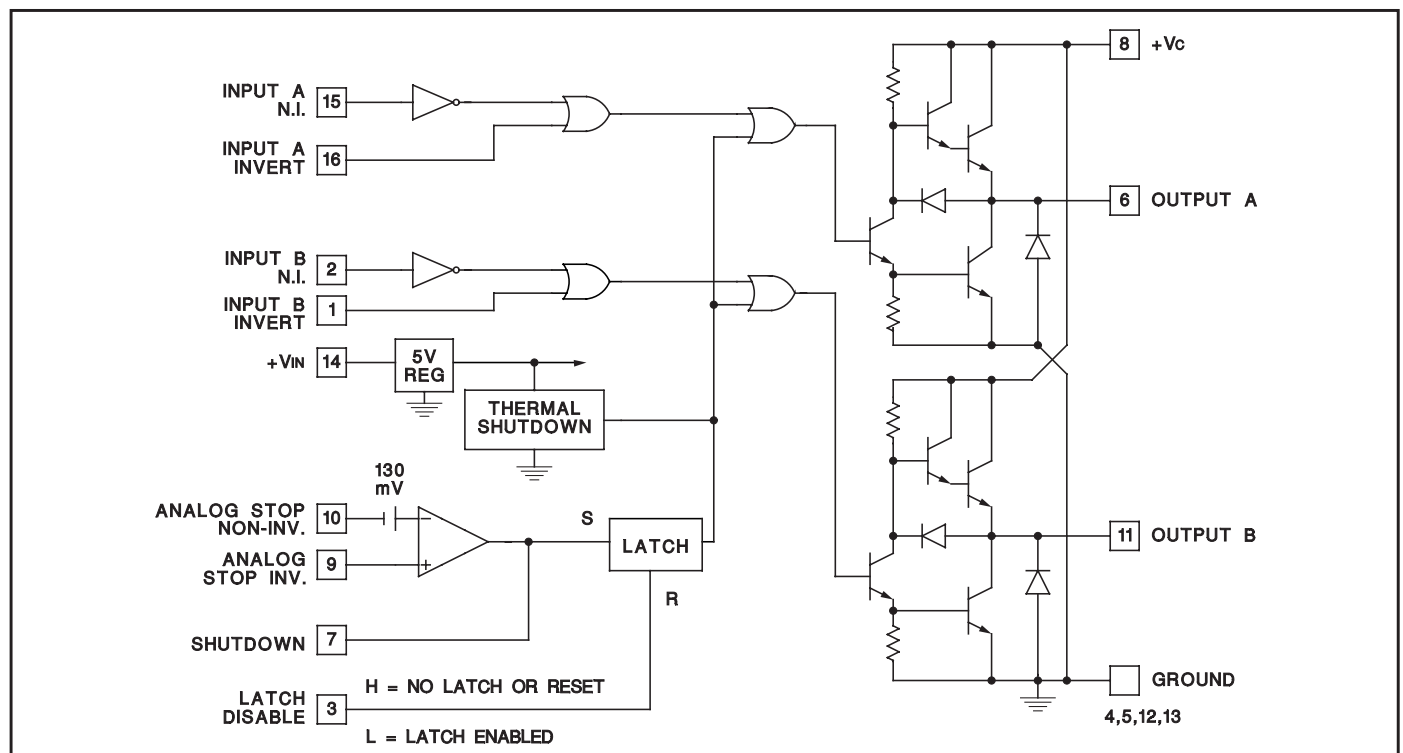
TRUTH TABLE (Each Channel)

INV.	N.I.	OUT
H	H	L
L	H	H
H	L	L
L	L	L

$OUT = \overline{INV}$ and N.I.

$\overline{OUT} = INV$ or N.I.

BLOCK DIAGRAM



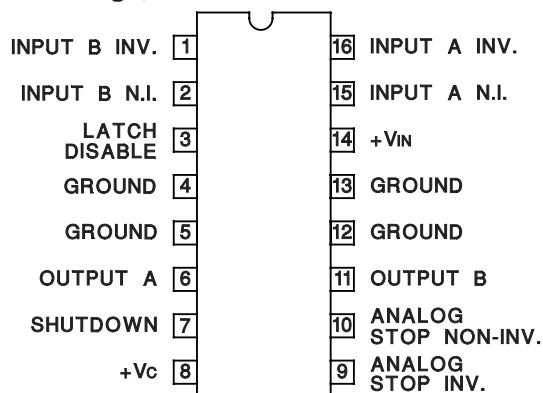
ABSOLUTE MAXIMUM RATINGS

Supply Voltage, VIN, N/J-Pkg	40V
Collector Supply Voltage, VC, N/J-Pkg	40V
Output Current (Each Output, Source or Sink) Steady-State, N/J-Pkg	±500mA
Peak Transient	
N-Pkg	±1.5A
J-Pkg	±1.0A
Capacitive Discharge Energy	
N-Pkg	20mJ
J-Pkg	15mJ
Digital Inputs (See Note), N/J-Pkg	5.5V
Analog Stop Inputs, N/J-Pkg	VIN
Power Dissipation at TA = 25°C (See Note)	
N-Pkg	2W
J-Pkg	1W
Power Dissipation at T (Leads/Case) = 25°C (See Note)	
N-Pkg	5W
J-Pkg	2W
Operating Temperature Range	−55°C to +125°C
Storage Temperature Range	−65°C to +150°C
Lead Temperature (Soldering, 10 Seconds)	300°C

Note: All voltages are with respect to the four ground pins which must be connected together. All currents are positive into, negative out of the specified terminal. Digital Drive can exceed 5.5V if input current is limited to 10mA. Consult Packaging section of Databook for thermal limitations and considerations of package.

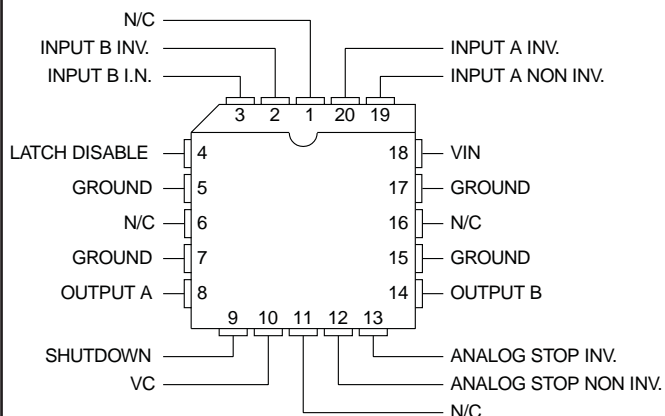
CONNECTION DIAGRAMS

DIL-16, SOIC-16 (TOP VIEW) J or N Package,



Note: All four ground pins must be connected to a common ground.

PLCC-20, LCC-20 (TOP VIEW) Q, L Packages



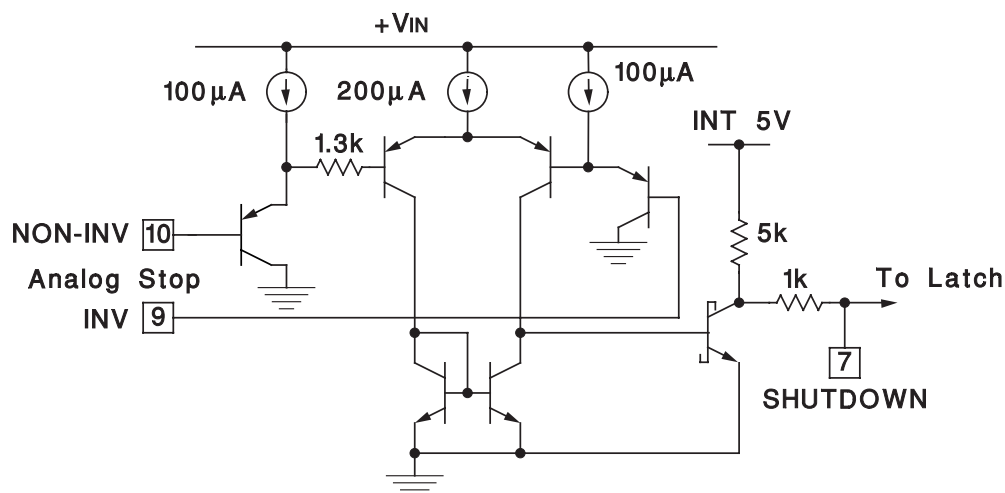
ELECTRICAL CHARACTERISTICS: Unless otherwise stated, these specifications apply for $T_A = -55^{\circ}\text{C}$ to $+125^{\circ}\text{C}$ for the UC1707, -25°C to $+85^{\circ}\text{C}$ for the UC2707 and 0°C to $+70^{\circ}\text{C}$ for the UC3707; $V_{IN} = V_C = 20\text{V}$. $T_A = T_J$.

PARAMETERS	TEST CONDITIONS	MIN	TYP	MAX	UNITS
V_{IN} Supply Current	$V_{IN} = 40\text{V}$		12	15	mA
V_C Supply Current	$V_C = 40\text{V}$, Outputs Low		5.2	7.5	mA
V_C Leakage Current	$V_{IN} = 0$, $V_C = 30\text{V}$, No Load		.05	0.1	mA
Digital Input Low Level				0.8	V
Digital Input High Level		2.2			V
Input Current	$V_I = 0$		-0.06	-1.0	mA
Input Leakage	$V_I = 5\text{V}$.05	0.1	mA
Output High Sat., $V_C - V_O$	$I_O = -50\text{mA}$			2.0	V
	$I_O = -500\text{mA}$			2.5	V
Output Low Sat., V_O	$I_O = -50\text{mA}$			0.4	V
	$I_O = -500\text{mA}$			2.5	V
Analog Threshold	$V_{CM} = 0$ to 15V	100	130	160	mV
Input Bias Current	$V_{CM} = 0$		-10	-20	μA
Thermal Shutdown			155		$^{\circ}\text{C}$
Shutdown Threshold	Pin 7 Input	0.4	1.0	2.2	V
Latch Disable Threshold	Pin 3 Input	0.8	1.2	2.2	V

TYPICAL SWITCHING CHARACTERISTICS: $V_{IN} = V_C = 20\text{V}$, $T_A = 25^{\circ}\text{C}$. Delays measured to 10% output change.

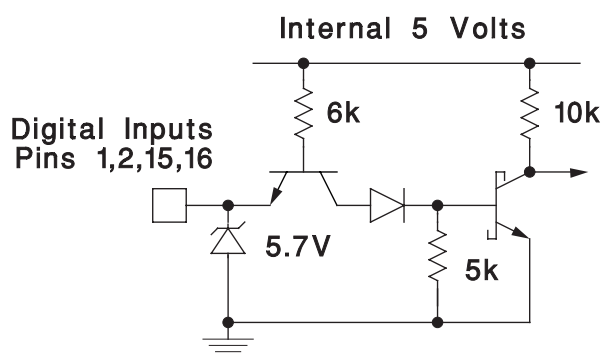
PARAMETERS	TEST CONDITIONS	OUTPUT CL =			UNITS
From Inv. Input to Output		open	1.0	2.2	nF
Rise Time Delay		40	50	60	ns
10% to 90% Rise		25	40	50	ns
Fall Time Delay		30	40	50	ns
90% to 10% Fall		25	40	50	ns
From N.I. Input to Output					
Rise Time Delay		30	40	50	ns
10% to 90% Rise		25	40	50	ns
Fall Time Delay		45	55	65	ns
90% to 10% Fall		25	40	50	ns
V_C Cross-Conduction	Output Rise	25			ns
Current Spike Duration	Output Fall	0			ns
Analog Shutdown Delay	Stop non-Inv. = 0V	180			ns
	Stop Inv. = 0 to 0.5V	180			ns
Digital Shutdown Delay	2V Input on Pin 7	50			ns

SIMPLIFIED INTERNAL CIRCUITRY



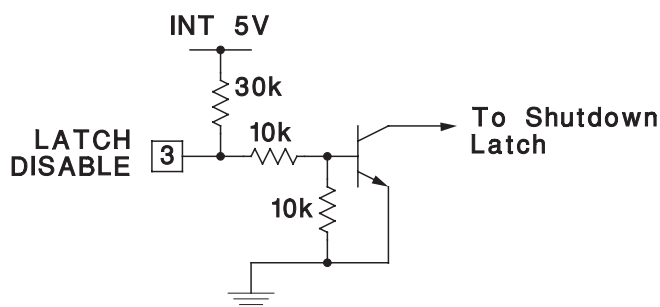
The input common-mode voltage range is from ground to $(V_{IN}-3V)$. When not used both inputs should be grounded. Activate time is a function of overdrive with a typical value of 180ns. Pin 7 serves both as a comparator output and as a common digital shutdown input. A high signal here will accomplish the fastest turn off of both outputs. Note that "OFF" is defined as the outputs low. Pulling shutdown low defeats the latch operation regardless of its status.

Figure 1. Typical digital input gate.



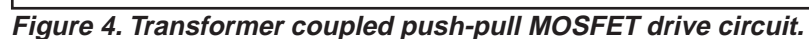
The input zener may be used to clamp input signal voltages higher than 5V as long as the zener current is limited to 10mA max. External pull-up resistors are not required.

Figure 2. Typical digital input gate.



The Shutdown latch is disabled when pin 3 is open. An impedance of 4k or less from pin 3 to ground will allow a shutdown signal to set the latch which can then be reset by either recycling the V_{IN} supply or by momentarily ($>200ns$) raising pin 3 high.

Figure 3. Latch disable.





TRANSFORMER COUPLING

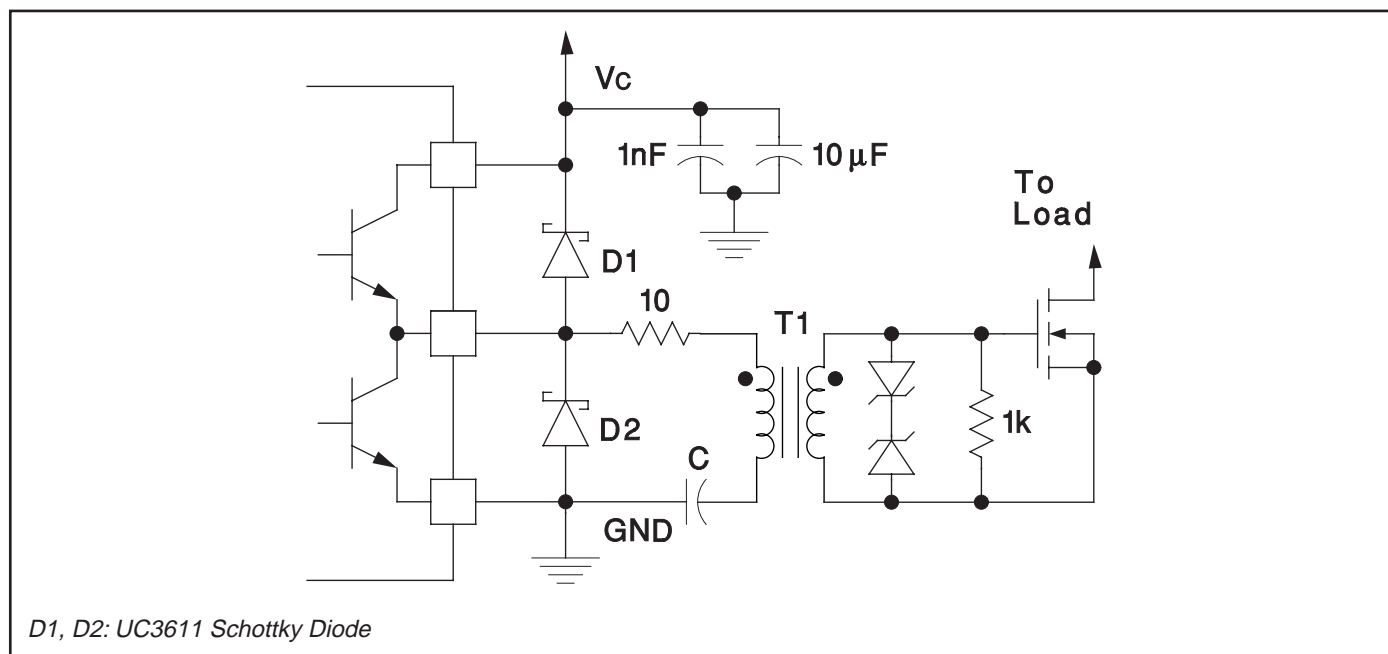


Figure 10. Transformer coupled MOSFET drive circuit.

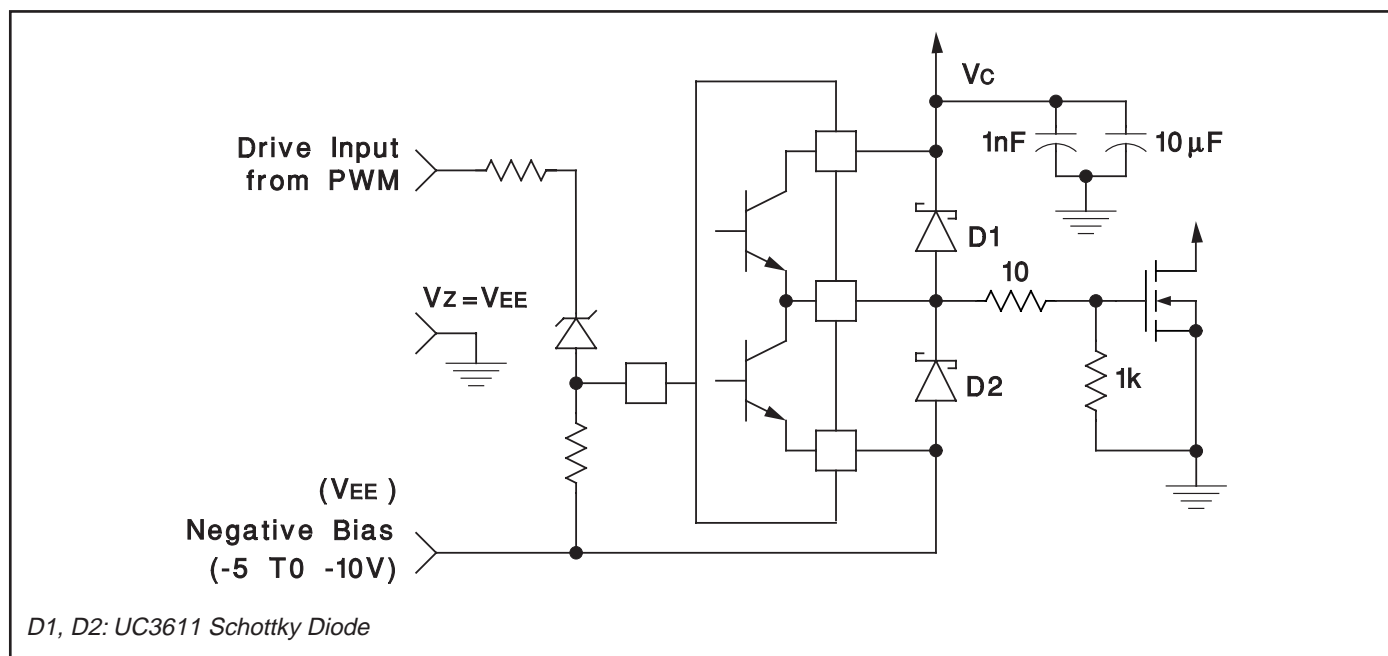


Figure 11. Power MOSFET drive circuit using negative bias voltage and level shifting to ground reference PWM.

IMPORTANT NOTICE

Texas Instruments and its subsidiaries (TI) reserve the right to make changes to their products or to discontinue any product or service without notice, and advise customers to obtain the latest version of relevant information to verify, before placing orders, that information being relied on is current and complete. All products are sold subject to the terms and conditions of sale supplied at the time of order acknowledgement, including those pertaining to warranty, patent infringement, and limitation of liability.

TI warrants performance of its semiconductor products to the specifications applicable at the time of sale in accordance with TI's standard warranty. Testing and other quality control techniques are utilized to the extent TI deems necessary to support this warranty. Specific testing of all parameters of each device is not necessarily performed, except those mandated by government requirements.

CERTAIN APPLICATIONS USING SEMICONDUCTOR PRODUCTS MAY INVOLVE POTENTIAL RISKS OF DEATH, PERSONAL INJURY, OR SEVERE PROPERTY OR ENVIRONMENTAL DAMAGE ("CRITICAL APPLICATIONS"). TI SEMICONDUCTOR PRODUCTS ARE NOT DESIGNED, AUTHORIZED, OR WARRANTED TO BE SUITABLE FOR USE IN LIFE-SUPPORT DEVICES OR SYSTEMS OR OTHER CRITICAL APPLICATIONS. INCLUSION OF TI PRODUCTS IN SUCH APPLICATIONS IS UNDERSTOOD TO BE FULLY AT THE CUSTOMER'S RISK.

In order to minimize risks associated with the customer's applications, adequate design and operating safeguards must be provided by the customer to minimize inherent or procedural hazards.

TI assumes no liability for applications assistance or customer product design. TI does not warrant or represent that any license, either express or implied, is granted under any patent right, copyright, mask work right, or other intellectual property right of TI covering or relating to any combination, machine, or process in which such semiconductor products or services might be or are used. TI's publication of information regarding any third party's products or services does not constitute TI's approval, warranty or endorsement thereof.


TEXAS INSTRUMENTS

THE WORLD LEADER IN DSP AND ANALOG

[Advanced Search](#)
[TI Home](#)
[TI&ME](#)
[Employment](#)

[Tech Support](#)
[Comments](#)
[Site Map](#)
[TI Global](#)

Power Management

[Power Management](#) > [Power Supply Support](#) > [MOSFET and Power Drivers](#)



UC1707, DUAL CHANNEL POWER DRIVER

Device Status: Active

- > [Description](#)
- > [Features](#)
- > [Datasheets](#)
- > [Pricing/Samples/Availability](#)
- > [Application Notes](#)
- > [Applications](#)

Parameter Name	UC1707
Internal Regulator	Yes (5V)

Description



The UC1707 family of power drivers is made with a high-speed Schottky process to interface between low-level control functions and high-power switching devices - particularly power MOSFETs. These devices contain two independent channels, each of which can be activated by either a high or low input logic level signal. Each output can source or sink up to 1.5A as long as power dissipation limits are not exceeded.

Although each output can be activated independently with its own inputs, it can be forced low in common through the action either of a digital high signal at the Shutdown terminal or a differential low-level analog signal. The Shutdown command from either source can either be latching or not, depending on the status of the Latch Disable pin.

Supply voltage for both VIN and VC can independently range from 5V to 40V.

These devices are available in two-watt plastic "bat-wing" DIP for operation over a 0°C to 70°C temperature range and, with reduced power, in a hermetically sealed cerdip for -55°C to +125°C operation. Also available in surface mount DW, Q, L packages.

Features

- Two independent Drivers
- 1.5A Totem Pole Outputs

- 1.5A Totem Pole Outputs
- Inverting and Non-Inverting Inputs
- 40ns Rise and Fall into 1000pF
- High-Speed, Power MOSFET Compatible
- Low Cross-Conduction Current Spike
- Analog Shutdown with Optional Latch
- Low Quiescent Current
- 5V to 40V Operation
- Thermal Shutdown Protection
- 16-Pin Dual-In-Line Package
- 20-Pin PLCC and CLCC Package

To view the following documents, [Acrobat Reader 3.x](#) is required.

To download a document to your hard drive, right-click on the link and choose 'Save'.

Datasheets

Full datasheet in Acrobat PDF: [slus177.pdf](#) (335 KB)

Pricing/Samples/Availability

<u>Orderable Device</u>	<u>Package</u>	<u>Pins</u>	<u>Temp (°C)</u>	<u>Status</u>	<u>Price/unit USD (100-999)</u>	<u>Pack Qty</u>	<u>DSCC Number</u>	<u>Availability / Samples</u>
5962-87619012A	<u>L</u>	20	-55 TO 125	ACTIVE	48.40	1		Check stock or order
5962-8761901EA	<u>J</u>	16	-55 TO 125	ACTIVE	29.84	1		Check stock or order
5962-8761901VEA	<u>J</u>	16	-55 TO 125	ACTIVE	148.29	1		Check stock or order
UC1707J	<u>J</u>	16	-55 TO 125	ACTIVE	19.01	1		Check stock or order
UC1707J/80900	<u>J</u>	16	-55 TO 125	ACTIVE	29.84	1		Check stock or order
UC1707J883B	<u>J</u>	16	-55 TO 125	ACTIVE	24.60	1		Check stock or order
UC1707JQMLV	<u>J</u>	16	-55 TO 125	ACTIVE	148.29	1		Check stock or order
UC1707L	<u>L</u>	20	-55 TO 125	ACTIVE	58.68	1		Check stock or order
UC1707L883B	<u>L</u>	20	-55 TO 125	ACTIVE	45.79	1		Check stock or order

Application Reports

- [ELECTROSTATIC DISCHARGE APPLICATION NOTE \(SSYA008 - Updated: 05/05/1999\)](#)
- [THERMAL CHARACTERISTICS OF LINEAR AND LOGIC PACKAGES USING JEDEC PCB DESIGNS \(SZZA017A - Updated: 09/10/1999\)](#)
- [U-111, PRACTICAL CONSIDERATIONS IN CURRENT MODE POWER SUPPLIES \(SLUA110 - Updated: 12/02/1999\)](#)

- U-118 NEW DRIVER ICS OPTIMIZE HIGH-SPEED POWER MOSFET SWITCHING CHARACTERISTICS (SLUA054 - Updated: 11/04/1999)
- U-137 PRACTICAL CONSIDERATIONS IN HIGH PERFORMANCE MOSFET, IGBT AND MCT GATE (SLUA105 - Updated: 12/02/1999)

Table Data Updated on: 8/16/2000