

2 • ROW

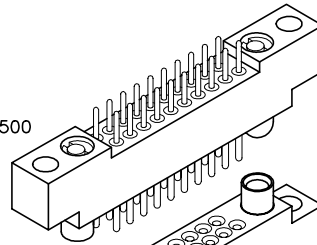
Cable or Board to Crimp Removable

.075"

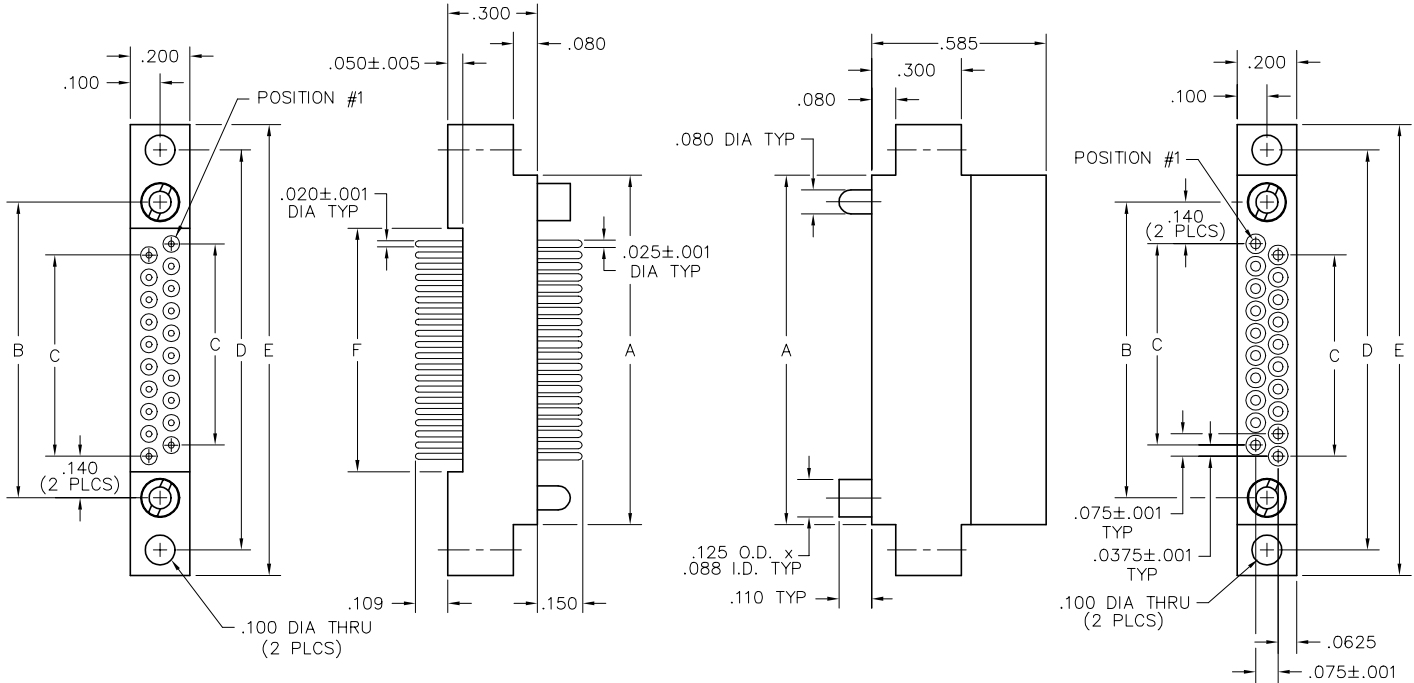
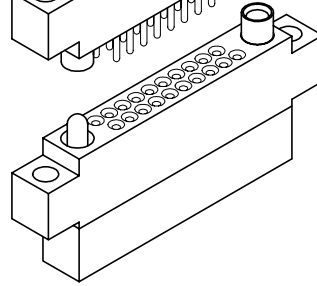
RM2

10 thru 100 Contacts

RM212-020-101-5500

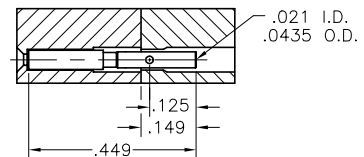
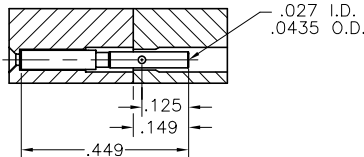
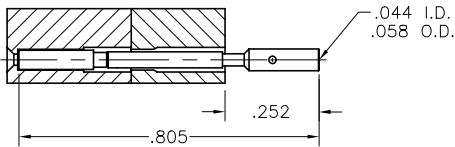


RM222-020-581-5500



PLUG

RECEPTACLE



NOTE:

When using crimp contacts with 20 gage barrel, barrel must be cut off prior to removing contact from connector body.

| CRIMP REMOVABLE CONTACTS | |
|--------------------------|--------------------|
| SIZE | PART NUMBER |
| 20-22 AWG | RM200-000-571-0000 |
| 24-26 AWG | RM200-000-581-0000 |
| 28-30 AWG | RM200-000-591-0000 |

| DIMENSIONS | | | | | |
|------------|-------|-------|-------|-------|-------|
| SIZE | A | B | C | D | E |
| 10 | .797 | .617 | .300 | .967 | 1.137 |
| 20 | 1.172 | .992 | .675 | 1.342 | 1.512 |
| 30 | 1.547 | 1.367 | 1.050 | 1.717 | 1.887 |
| 40 | 1.922 | 1.742 | 1.425 | 2.092 | 2.262 |
| 50 | 2.297 | 2.117 | 1.800 | 2.467 | 2.637 |
| 60 | 2.672 | 2.492 | 2.175 | 2.842 | 3.012 |
| 70 | 3.047 | 2.867 | 2.550 | 3.217 | 3.387 |
| 80 | 3.422 | 3.242 | 2.925 | 3.592 | 3.762 |
| 90 | 3.797 | 3.617 | 3.300 | 3.967 | 4.137 |
| 100 | 4.172 | 3.992 | 3.675 | 4.342 | 4.512 |

PLUG: RM212-020-101-5500
RECEPTACLE: RM222-020-581-5500
 XXXXX-XXX-XXX-XXXX

| PLUG | | RECEPTACLE | |
|--|--|--|--|
| SERIES | | | |
| RM .075" Screw Machine PC Connector | | RM .075" Screw Machine PC Connector | |
| BODY | | | |
| 2 | 2-Row | 2 | 2-Row |
| BODY STYLE: | | BODY STYLE: | |
| 1 | Plug, straight, with mounting ears | 2 | Receptacle, straight, with mounting ears |
| 3 | Plug, straight, without mounting ears | 4 | Receptacle, straight, without mounting ears |
| BODY MATERIAL: | | BODY MATERIAL: | |
| 2 | Polyphenylene sulfide (PPS) | 2 | Polyphenylene sulfide (PPS) |
| SIZE | | | |
| 010, 020, 030, 040, 050, 060, 070, 080, 090, 100 | | 010, 020, 030, 040, 050, 060, 070, 080, 090, 100 | |
| CONTACTS | | | |
| TYPE CONTACTS/TERMINATIONS: | | TYPE CONTACTS/TERMINATIONS: | |
| 10 | Pin, straight, dip solder, .109" x .020" dia | 00 | Contacts not supplied |
| 11 | Pin, straight, solder cup | 57 | Socket, straight, crimp removable (20-22 AWG)* |
| 12 | Pin, straight, dip solder, .140" x .020" dia | 58 | Socket, straight, crimp removable (24-26 AWG)* |
| 13 | Pin, straight, dip solder, .172" x .020" dia | 59 | Socket, straight, crimp removable (28-30 AWG)* |
| 15 | Pin, straight, flex, .093" x .017" dia | | |
| PLATING OPTIONS: | | PLATING OPTIONS: | |
| 1 | Gold plated termination | 1 | Gold plated termination |
| 2 | Pre-tinned termination (except solder cup or flex) | | |
| HARDWARE | | | |
| STYLE OF HARDWARE: (See R-41 & R-42 for all options) | | STYLE OF HARDWARE: (See R-41 & R-42 for all options) | |
| 0256 | None | 0256 | None |
| 55 | Guide set | 55 | Guide set |
| 57 | Two guide pins | 57 | Two guide pins |
| 58 | Two guide sockets | 58 | Two guide sockets |
| 29 | Fixed jackset | 29 | Fixed jackset |
| 30 | Fixed jackset, reversed | 30 | Fixed jackset, reversed |
| 19 | Two fixed jackscrews | 19 | Two fixed jackscrews |
| 20 | Two fixed jacksockets | 20 | Two fixed jacksockets |
| 59 | Hex turning jackset, .200" | 59 | Hex turning jackset, .200" |
| 60 | Hex turning jackset, reversed, .200" | 60 | Hex turning jackset, reversed, .200" |
| 61 | Two hex turning jackscrews, .200" | 61 | Two hex turning jackscrews, .200" |
| 62 | Two hex turning jacksockets, .200" | 62 | Two hex turning jacksockets, .200" |
| 64 | Turning jackset, .490" | 64 | Turning jackset, .490" |
| 65 | Turning jackset, reversed, .490" | 65 | Turning jackset, reversed, .490" |
| 66 | Two turning jackscrews, .490" | 66 | Two turning jackscrews, .490" |
| 67 | Two turning jacksockets, .490" | 67 | Two turning jacksockets, .490" |
| POLARIZATION: | | POLARIZATION | |
| 00 | None | 00 | None |
| 01 | thru 68 are special identifiers, see R-38 | 01 | thru 68 are special identifiers, see R-38 |
| 70 | Same configuration as 01 without Loctite® (To be keyed by customer) | 70 | Same configuration as 01 without Loctite® (To be keyed by customer) |

- * Full compliment of crimp removable sockets packaged with connectors
1. Crimp tool - AirBorn part number: CDG4601, Mil Spec number M22520/2-01
 2. Crimp positioner - AirBorn part number: CDG4602 (24-26 AWG and 28-30 AWG)
CDG4603 (20-22 AWG)
 3. Crimp removal tool - AirBorn part number: CDG8161 (All AWGs)
 4. Crimp contact part number on previous page.

2 • ROW

Right Angle PTH Plug Straight PTH Plug

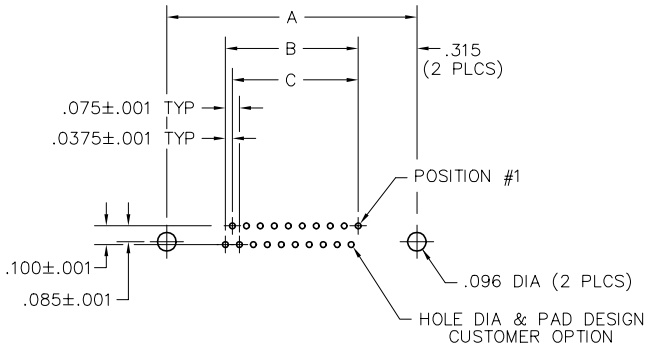
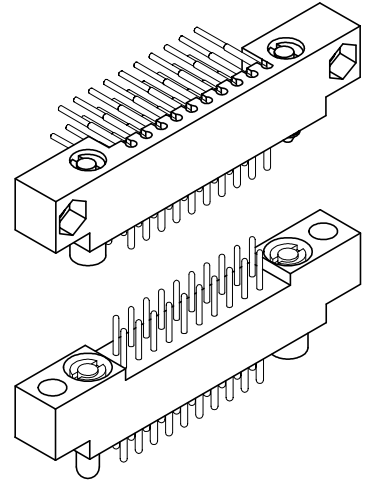
.075"

RM2

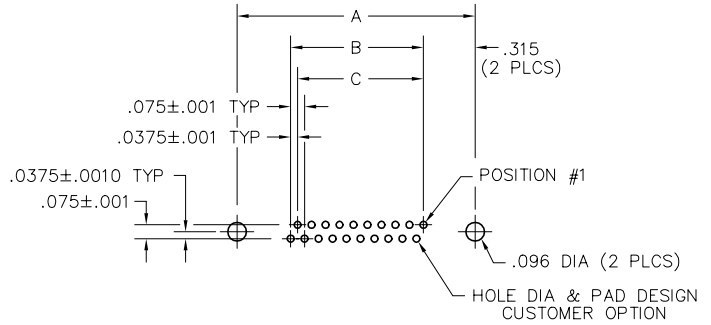
10 thru 100 Contacts

Recommended
Board Layout

| DIMENSIONS | | | |
|------------|-------|-------|-------|
| SIZE | A | B | C |
| 10 | .967 | .337 | .300 |
| 20 | 1.342 | .712 | .675 |
| 30 | 1.717 | 1.087 | 1.050 |
| 40 | 2.092 | 1.462 | 1.425 |
| 50 | 2.467 | 1.837 | 1.800 |
| 60 | 2.842 | 2.212 | 2.175 |
| 70 | 3.217 | 2.587 | 2.550 |
| 80 | 3.592 | 2.962 | 2.925 |
| 90 | 3.967 | 3.337 | 3.300 |
| 100 | 4.342 | 3.712 | 3.675 |



RIGHT ANGLE PTH PLUG
PC BOARD VIEWED FROM COMPONENT SIDE



STRAIGHT PTH PLUG
PC BOARD VIEWED FROM COMPONENT SIDE

| SIZE | CONTACT ID | SIZE | CONTACT ID |
|------|------------|------|------------|
| 10 | | 60 | |
| 20 | | 70 | |
| 30 | | 80 | |
| 40 | | 90 | |
| 50 | | 100 | |