

General Description

The EG&G Reticon R Series (RL0512R and RL1024R) combines two S Series devices on a single, monolithic substrate. They are positioned in parallel to each other. They operate completely independently, allowing simultaneous readout, sequential readout (first one side and then the other), or any number of other user-defined formats. Each R Series device comes in a 34-pin ceramic side-brazed DIP. Two kinds of windows are available: a ground and polished quartz window, or a fiber-optic window.

The R Series has virtually all the advantages of the standard RL0512S. Refer to the S Series data sheet for information on internal scanning circuitry, timing, electrical characteristics, dark signal and noise characteristics, and amplifier requirements.

The R Series is ideal for applications such as dual-beam spectroscopy (sample and reference beam), time-resolved spectroscopy of a single beam (by delaying the start of one of the arrays), or other instrumentation requiring parallel arrays in perfect registration.

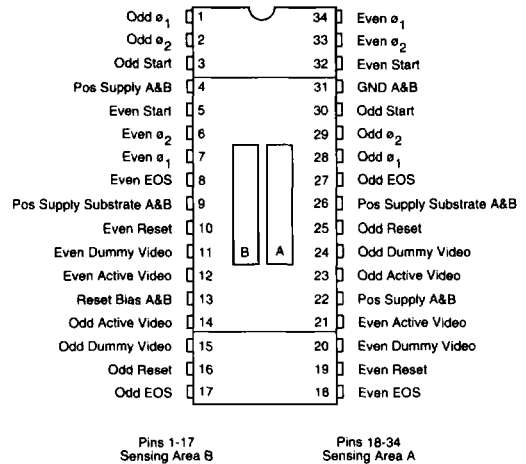


Figure 1. Pinout Configuration

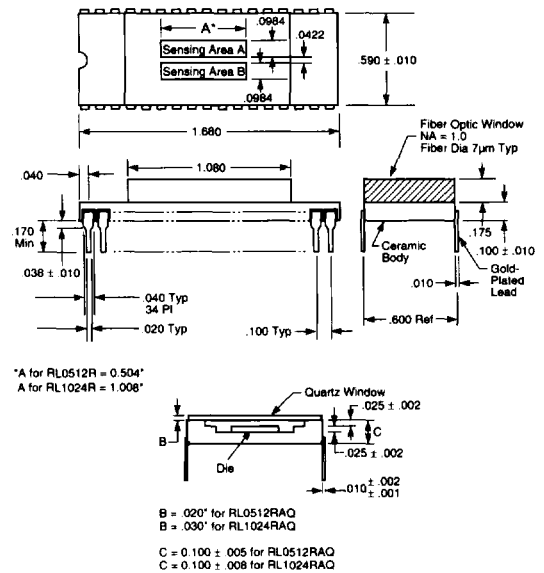


Figure 2. Package Dimensions

R Series

Ordering Information

Array	Part Number
RL0512R with Quartz Window	RL0512RAQ-011
RL0512R with Fiber Optic Faceplate	RL0512RAF-011
RL1024R with Quartz Window	RL1024RAQ-011
RL1024R with Fiber Optic Faceplate	RL1024RAF-011

055-0220
March 1992