

# LED Displays ~ Alpha Numeric



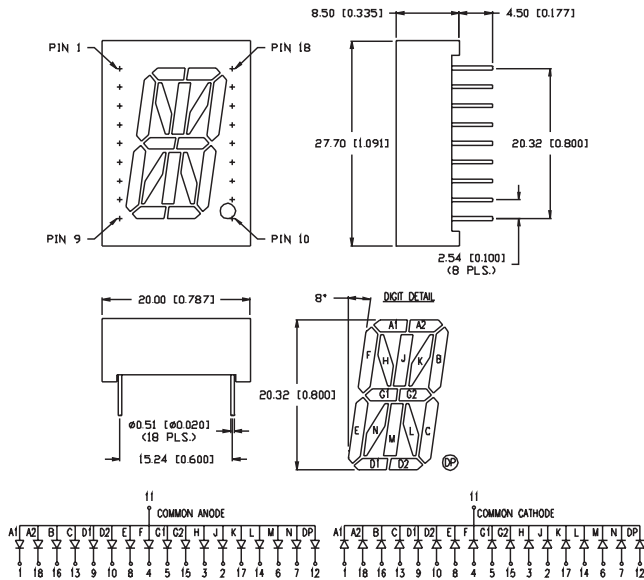
## Single Character



### Features/Options

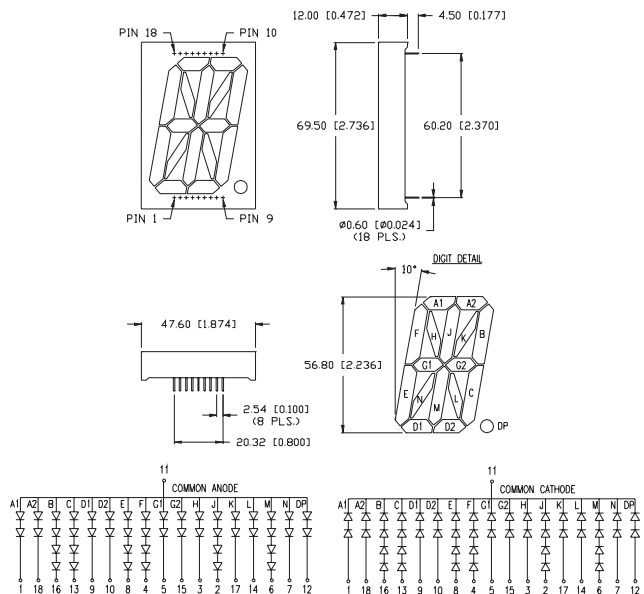
- ▶ Standard and high brightness chips
- ▶ Intensity grading available
- ▶ Custom sizes at minimal tooling
- ▶ Face and segment off colors in grey and milky white

### 0.80" single character



Part Number	Wave Length (nm)	Brightness (μcd) @ 10mA	Vf (typ) 10mA	Vf (max) 10mA	Emitted Color	Polarity (common)
LDS-E8002RI	565	2500	2.2	2.6	Green	Anode
LDS-E8004RI	635	2500	2.0	2.5	Red	Anode
LDS-E8006RI	660	8000	1.7	2.2	Red	Anode
LDS-E8002RI-SUG	574	7000	2.2	2.6	Green	Anode
LDS-E8004RI-SI	636	15,000	2.0	2.6	Red	Anode
LDS-E8007RI-USB	470	6000	3.5	4.0	Blue	Anode
LDS-F8002RI	565	2500	2.2	2.6	Green	Cathode
LDS-F8004RI	635	2500	2.0	2.5	Red	Cathode
LDS-F8006RI	660	8000	1.7	2.2	Red	Cathode
LDS-F8002RI-SUG	574	7000	2.2	2.6	Green	Cathode
LDS-F8004RI-SI	636	15,000	2.0	2.6	Red	Cathode
LDS-F8007RI-USB	470	6000	3.5	4.0	Blue	Cathode

### 2.3" single character



Part Number	Wave Length (nm)	Brightness (μcd) @ 10mA	Vf (typ) 10mA*	Vf (max) 10mA*	Emitted Color	Polarity (common)
LDS-EB232RI	565	2500	4.4 / 8.8	5.2 / 10.4	Green	Anode
LDS-EB234RI	635	2500	4.0 / 8.0	5.0 / 10.0	Red	Anode
LDS-EB236RI	660	8000	3.4 / 6.8	4.4 / 8.8	Red	Anode
LDS-EB232RI-SUG	574	7000	4.4 / 8.8	5.2 / 10.4	Green	Anode
LDS-EB234RI-SI	636	15,000	4.0 / 8.0	5.2 / 10.4	Red	Anode
LDS-EB237RI-USB	470	6000	7.0 / 14.0	8.0 / 16.0	Blue	Anode
LDS-FB232RI	565	2500	4.4 / 8.8	5.2 / 10.4	Green	Cathode
LDS-FB234RI	635	2500	4.0 / 8.0	5.0 / 10.0	Red	Cathode
LDS-FB236RI	660	8000	3.4 / 6.8	4.4 / 8.8	Red	Cathode
LDS-FB232RI-SUG	574	7000	4.4 / 8.8	5.2 / 10.4	Green	Cathode
LDS-FB234RI-SI	636	15,000	4.0 / 8.0	5.2 / 10.4	Red	Cathode
LDS-FB237RI-USB	470	6000	7.0 / 14.0	8.0 / 16.0	Blue	Cathode

\*Second Value for four chips in segments B, C, E, F, J, and M



USA/Canada +1-800-278-5666  
Europe +49-6081-964380  
Asia +886-3-5821124



[www.lumex.com](http://www.lumex.com)



USA/Canada +1-847-359-8904  
Europe +49-6081-964381  
Asia +886-3-5821154

- 1
- 2
- 3
- 4
- 5
- 6
- 7
- 8
- 9
- 10
- 11
- 12
- 13
- 14
- 15
- 16
- 17
- 18
- 19
- 20
- 21
- 22
- 23
- 24
- 25
- 26
- 27
- 28
- 29