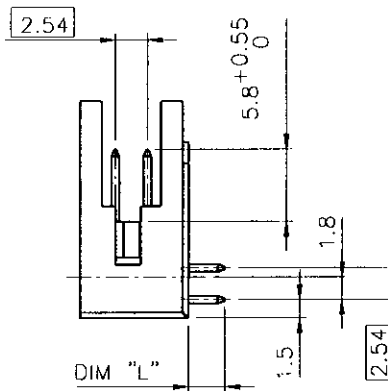
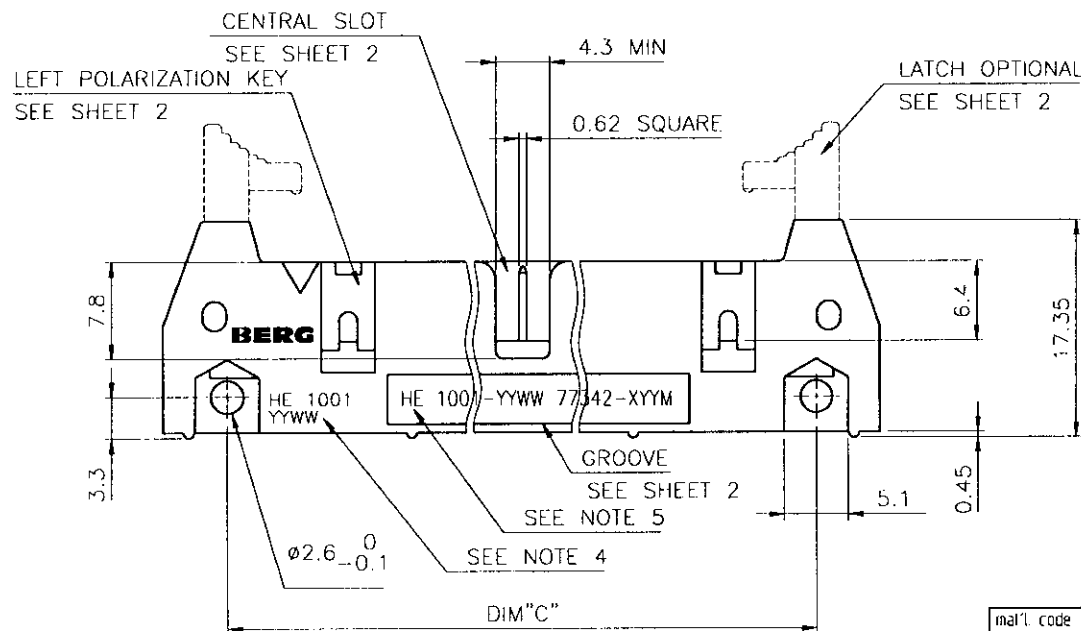
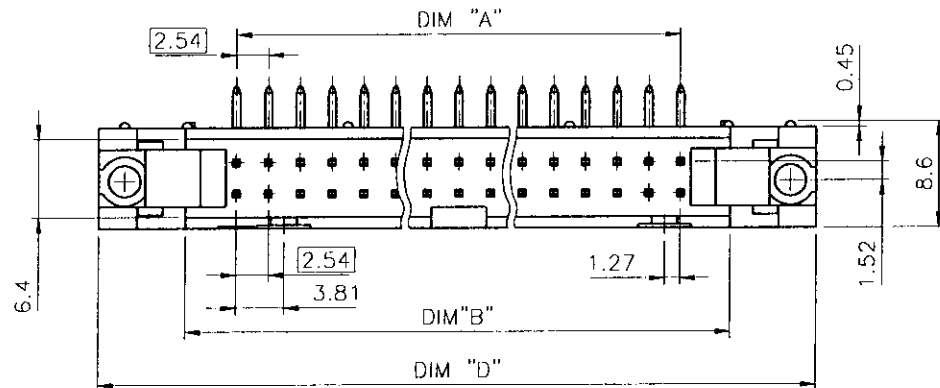


PRODUCT NUMBER	DIM "A"	DIM "B"	DIM "C"	DIM "D"
77342-XYX	SEE TABLE SHEET 213 2/2			



NOTES:

- 1 - MATERIAL CONTACT: COPPER ALLOY.
- 2 - MATERIAL PLASTIC: POLYESTER 30% GLASSFILLED FLAME RETARDANT PER UL-94-V0, COLOR GREY.
- 3 - PRODUCTS PACKED IN ANTISTATIC TUBES 550mm.
- 4 - PART NUMBER FOLLOWED BY A "F" IF PRINTING IS REQUIRED (EXAMPLE: 77342-020F) SEE TA 344.
- 5 - PART NUMBER FOLLOWED BY A "M" IF PRINTING IS REQUIRED (EXAMPLE: 77342-020M) SEE TA 803.

0.76 μ m Au	3.81 μ m SnPb MIN
CONTACT AREA	SOLDER TAIL AREA
PLATING THICKNESS OVER 1.27 μ m Ni MIN	

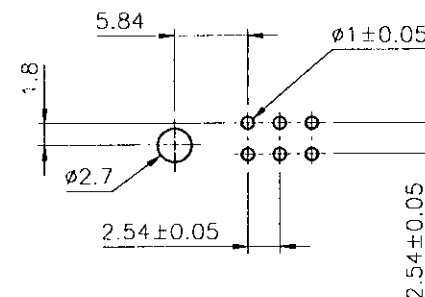
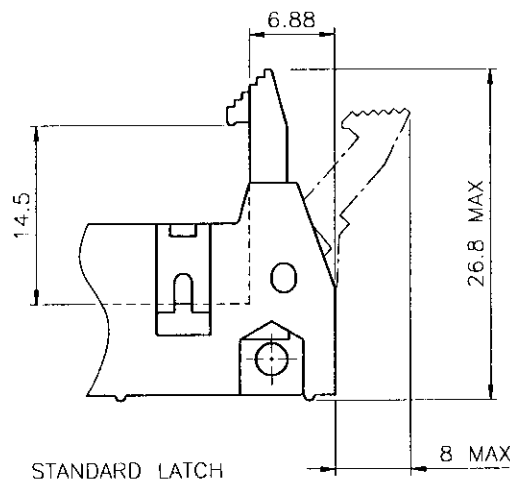
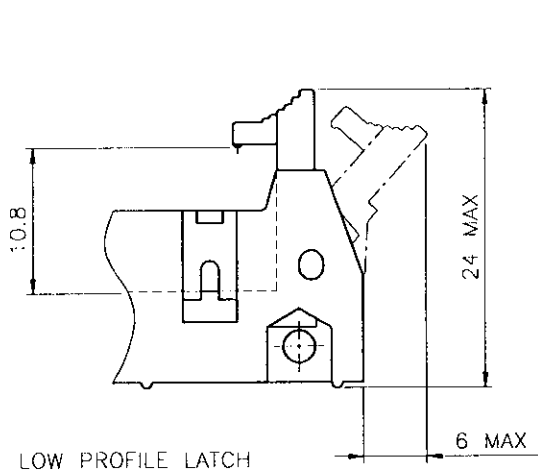
mal'l. code				tolerances unless otherwise specified		CUSTOMER COPY		BERG ELECTRONICS	
lfr	ecn no	dr	date	linear		projection		title	
L	F40223	JMC	94.03.18			Φ		QKIE HEADER	
M	F50302	JMC	95.04.19					RIGHT ANGLE 0.76 μ m Au	
N	V51312	PNZ	95.11.13	angles				product family	QKIE HDR
P	F50886	OMA	95.11.28	dr	P.NIZZI	95.11.13		size	dwg no
				engr	PHAMVAN	95.11.13		A3	77342
				chr	P.NIZZI	95.11.13		scale	2.5:1
				appd	JM.P	95.11.13			
sheet	revision	P	P						
index	sheet	1	2						

This data sheet contains information for identification only. It is not intended for use as a specification. It is subject to change without notice. © 2004 BERG ELECTRONICS, INC.

BERG
ELECTRONICS

This data sheet contains information for identification only. It is not intended for use as a specification. It is subject to change without notice. © 2004 BERG ELECTRONICS, INC.

PRODUCT NUMBER	SIZE	DIM "A"	DIM "B"	DIM "C"	DIM "D"	CENTRAL SLOT	LEFT POL KEY	GROOVE
77342-X06	2x3	5.08	13.15	16.76	26.92	NO	NO	NO
77342-X08	2x4	7.62	15.69	19.3	29.46	NO	NO	NO
77342-X10	2x5	10.16	18.23	21.84	32	YES	NO	NO
77342-X14	2x7	15.24	23.31	26.92	37.08	YES	NO	NO
77342-X16	2x8	17.78	25.85	29.46	39.62	YES	YES	YES
77342-X18	2x9	20.32	28.39	32.00	42.16	YES	YES	NO
77342-X20	2x10	22.86	30.93	34.54	44.7	YES	YES	YES
77342-X26	2x13	30.48	38.55	42.16	52.32	YES	YES	YES
77342-X30	2x15	35.56	43.63	47.24	57.4	YES	YES	NO
77342-X34	2x17	40.64	48.71	52.32	62.48	YES	YES	NO
77342-X40	2x20	48.26	56.33	59.94	70.1	YES	YES	YES
77342-X44	2x22	53.34	61.41	65.02	75.18	YES	YES	YES
77342-X50	2x25	60.96	69.03	72.64	82.8	YES	YES	YES
77342-X60	2x30	73.66	81.73	85.34	95.5	YES	YES	YES
77342-X64	2x32	78.74	86.81	90.42	100.58	YES	YES	YES



77342-8YY						
77342-5YY						
77342-4YY						
77342-3YY						
77342-2YY						
77342-1YY						
77342-0YY						
PRODUCT CODE "X"	2.9	4.5	3.8	WITHOUT LATCH	STANDARD LATCH	LOW PROFILE LATCH
	DIM "L"			EJECTOR LATCH OPTION		

mat'l. code				tolerances unless otherwise specified		CUSTOMER COPY		BERG ELECTRONICS	
lir	ecr no	dr	date	linear		projection		title	
L	F40223	JMC	94.03.18					RIGHT ANGLE 0.76µm Au	
M	F50302	JMC	95.04.19					product family	QKIE HDR
N	V51312	PNZ	95.11.13	angles				size	213
P	F50886	OMA	95.11.28	dr	P.NIZZI	95.11.13		dwg no	77342
				engr	PHAMVAN	95.11.13		scale	2.5:1
				chr	P.NIZZI	95.11.13		sheet	2 of
				appd	J.M.P	95.11.13			
sheet index	revision	sheet							

PDM: Rev:P

STATUS: Released

Printed: Sep 15, 2004