

PRODUCT NUMBER
5 4 2 0 1 - X X X - X X - X X X

PLATING

S=15μ"[0.38μm]GOLD
ON CONTACT AREA
150μ"[3.81μm]TIN/LEAD
ON TAIL
G=30μ"[0.76μm]GOLD
ON CONTACT AREA
150μ"[3.81μm]TIN/LEAD
ON TAIL
T=150μ"[3.81μm]TIN/LEAD
ON CONTACT AREA
AND ON TAIL

POLARIZATION
NOTE 6

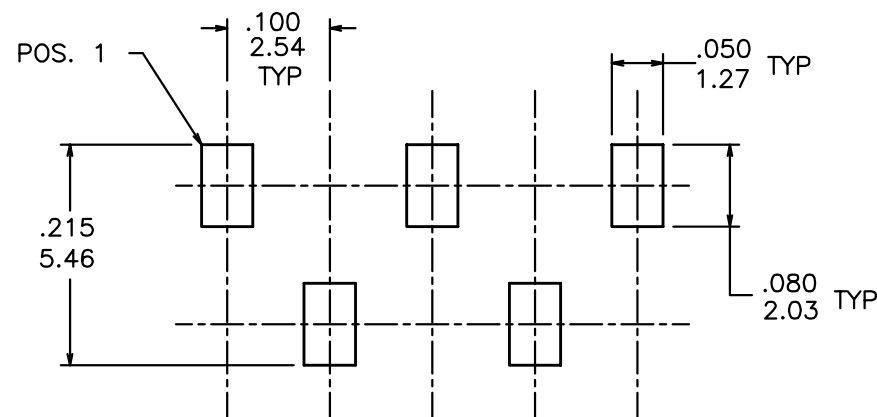
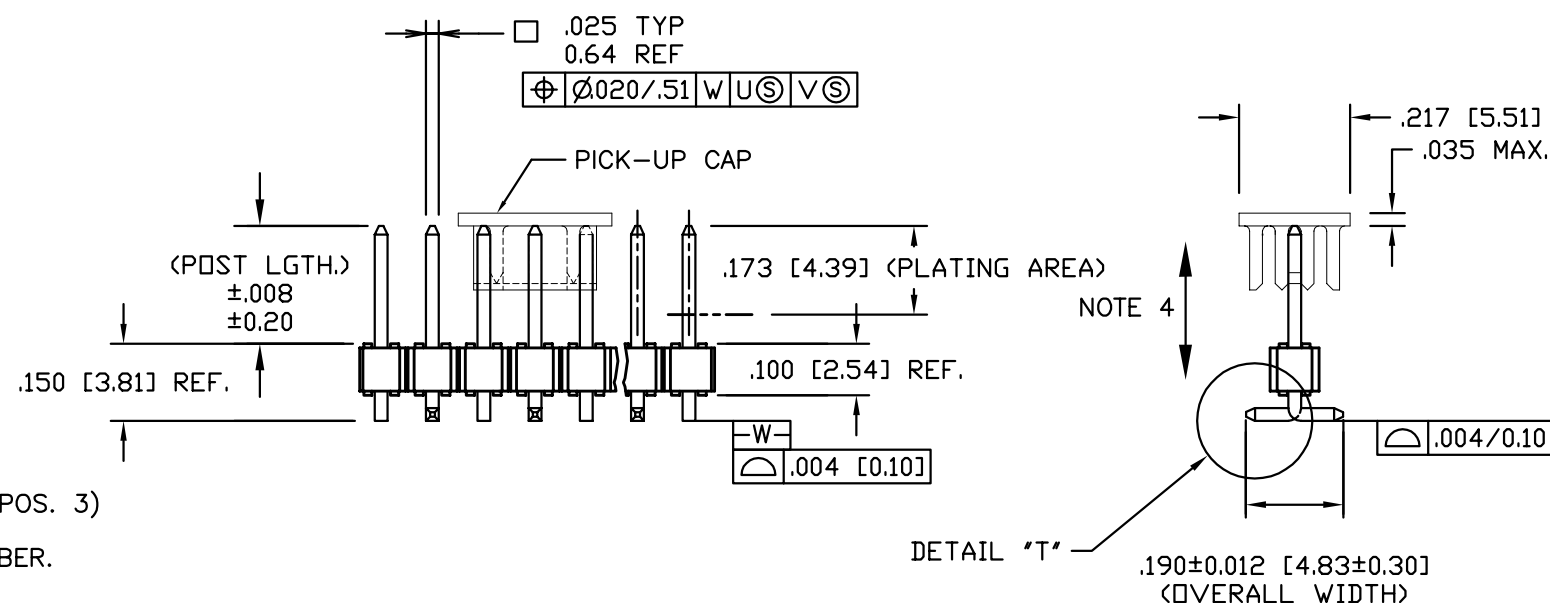
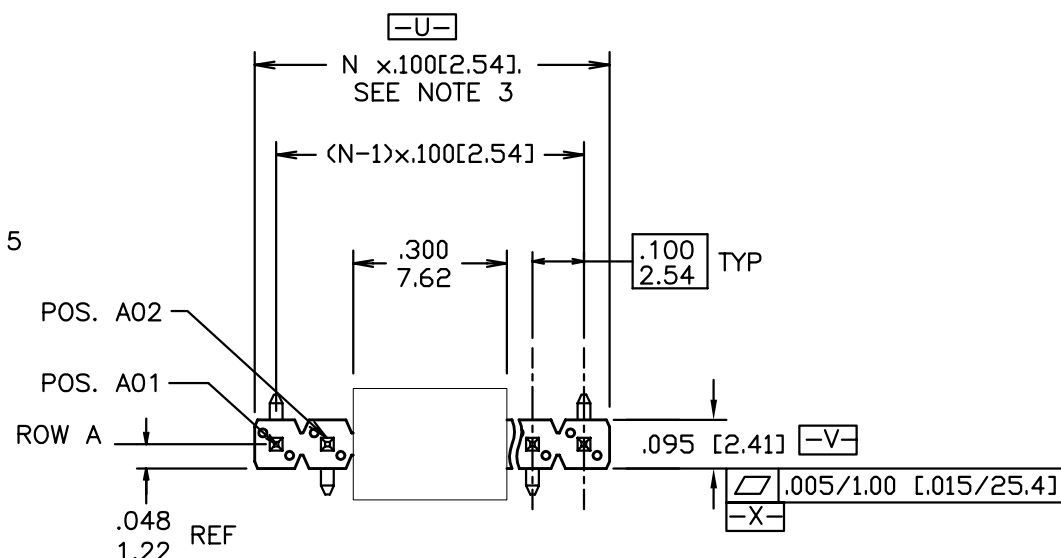
PACKAGING TYPE, NOTE 5

POSITIONS PER ROW
02 TO 17

LEAD STYLE	POST LGTH.
08	0.230/5.84
30	0.318/8.08
12	0.420/10.67

NOTES:

- HOUSING MAT'L: HIGH TEMPERATURE THERMOPLASTIC. UL94V-0
COLOR: BLACK
- PIN MATERIAL: PHOSPHOR-BRONZE
- TO DETERMINE DIMENSIONS:
N = NUMBER OF POSITIONS PER ROW.
EXAMPLE: 10 POS., $N \times .100/2.54 = 1.00/25.4$
- 2LBS/0.9KG MIN. PIN RETENTION IN EITHER DIRECTION.
- PACKAGING: - = POLY BAGS
P = TUBES WITH PICKUP CAPS.
A = TAPE AND REEL WITH PICKUP CAPS.
- FOR POLARIZATION, SPECIFY POSITION NUMBER (i.e., A03=ROW A POS. 3)
TO OMIT PIN.
IF THIS FEATURE IS NOT APPLICABLE, OMIT FROM PRODUCT NUMBER.
- UNDERPLATING: 50μ"/1.27μm Ni.



RECOMMENDED PAD LAYOUT

mat'l. code SEE NOTES 1 & 2				tolerances unless otherwise specified		CUSTOMER COPY	FCI Electronics www.fciconnect.com			
ltr	ecn no	dr	date	linear	.XX ±.01/.X±.3		title			
A	V92813	DAI	08/24/99	linear	.XXX ±.005/.XX±.13	projection	.100/2.54mm UNSHROUDED HEADER			
B	V94313	DAI	11/1/99		.XXXX ±.0020/.XXX±.051		SINGLE ROW, VERTICAL, SURFACE MOUNT			
C	V02322	AZ	9/15/00	angles	0° ±2°		product family BERGSTIK			
D	V20449	GIP	03/13/02	dr	D.INGRAM 05/11/99	INCH/MM	size dwg no			
				enr	H.SUNDY 07/21/99		A 54201			
				chr	H.SUNDY 07/21/99	scale	1:1			
				appd	H.SUNDY 07/21/99		sheet 1 of 2			
sheet index	revision sheet	D 1	D 2				cage code 22526			


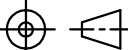
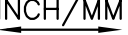
Tous droits strictement reserves. Reproduction ou communication a des tiers interdite sous quelque forme que ce soit sans autorisation ecrite du proprietaire. Propriete de c FCI. Droits de reproduction FCI.

All rights strictly reserved. Reproduction or issue to third parties in any form whatever is not permitted without written authority from the proprietor. Property of FCI. Copyright FCI.



TAPE AND REEL PACKAGING

SIZE	LEAD STYLE 08 POST (0.230 [5.84])	LEAD STYLE 30 POST (0.318 [8.08])	LEAD STYLE 12 POST (0.420 [10.67])
1X2	NONE	NONE	NONE
1X3	↑	↑	↑
1X4			
1X5			
1X6			
1X7			
1X8			
1X9			
1X10			
1X11			
1X12			
1X13			
1X14			
1X15			
1X16			
1X17			
1X18			
1X19	↓	↓	↓
1X20	NONE	NONE	NONE

mat'l. code				tolerances unless otherwise specified				CUSTOMER COPY				 Electronics FCI www.fciconnect.com																																																																																																																																																																																																																																																																																																																																																																																																																																																																																																																																																																																																																																																																																																																																																																																																																																																																																																																																																																																																																																																																																																																																																																																																																																																																																																																																																																																																																																																																																																																																																																																																																																																																																																																			
ltr	ecn no	dr	date	linear	.XX ±.01/.X±.3				projection 	title .100/2.54mm UNSHROUDED HEADER SINGLE ROW, VERTICAL, SURFACE MOUNT																																																																																																																																																																																																																																																																																																																																																																																																																																																																																																																																																																																																																																																																																																																																																																																																																																																																																																																																																																																																																																																																																																																																																																																																																																																																																																																																																																																																																																																																																																																																																																																																																																																																																																																					
D					.XXX ±.005/.XX±.13																																																																																																																																																																																																																																																																																																																																																																																																																																																																																																																																																																																																																																																																																																																																																																																																																																																																																																																																																																																																																																																																																																																																																																																																																																																																																																																																																																																																																																																																																																																																																																																																																																																																																																																										
					.XXX ±.0020/.XXX±.051																																																																																																																																																																																																																																																																																																																																																																																																																																																																																																																																																																																																																																																																																																																																																																																																																																																																																																																																																																																																																																																																																																																																																																																																																																																																																																																																																																																																																																																																																																																																																																																																																																																																																																																										
				angles	0° ±2°					product family BERGSTIK size dwg no																																																																																																																																																																																																																																																																																																																																																																																																																																																																																																																																																																																																																																																																																																																																																																																																																																																																																																																																																																																																																																																																																																																																																																																																																																																																																																																																																																																																																																																																																																																																																																																																																																																																																																																					
				dr	D.INGRAM	05/11/99	INCH/MM																																																																																																																																																																																																																																																																																																																																																																																																																																																																																																																																																																																																																																																																																																																																																																																																																																																																																																																																																																																																																																																																																																																																																																																																																																																																																																																																																																																																																																																																																																																																																																																																																																																																																																																								
				engr	H.SUNDY	07/21/99	scale				A 54201																																																																																																																																																																																																																																																																																																																																																																																																																																																																																																																																																																																																																																																																																																																																																																																																																																																																																																																																																																																																																																																																																																																																																																																																																																																																																																																																																																																																																																																																																																																																																																																																																																																																																																																				
				chr	H.SUNDY	07/21/99	1:1																																																																																																																																																																																																																																																																																																																																																																																																																																																																																																																																																																																																																																																																																																																																																																																																																																																																																																																																																																																																																																																																																																																																																																																																																																																																																																																																																																																																																																																																																																																																																																																																																																																																																																																								
				appd	H.SUNDY	07/21/99					code 213 sheet 2 of																																																																																																																																																																																																																																																																																																																																																																																																																																																																																																																																																																																																																																																																																																																																																																																																																																																																																																																																																																																																																																																																																																																																																																																																																																																																																																																																																																																																																																																																																																																																																																																																																																																																																																																				
sheet index	revision sheet																																																																																																																																																																																																																																																																																																																																																																																																																																																																																																																																																																																																																																																																																																																																																																																																																																																																																																																																																																																																																																																																																																																																																																																																																																																																																																																																																																																																																																																																																																																																																																																																																																																																																																																														

cage code
22526

PDM: Rev:D STATUS: Released

Printed: Jul 18, 2002