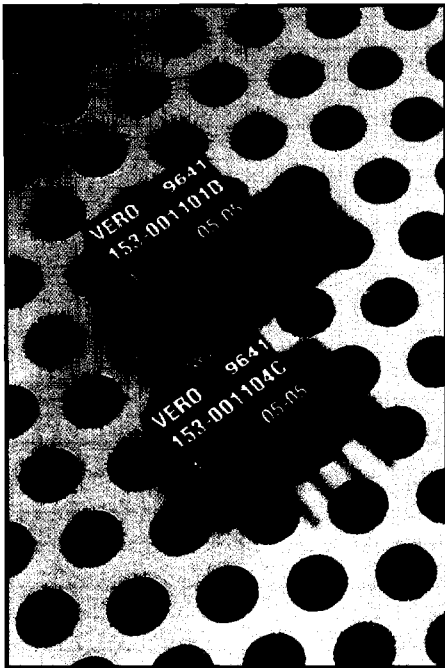


# POWER CONVERSION

**SBC SERIES ISOLATED DC-DC**  
**SINGLE OUTPUT NON-REGULATED 1WATT**

The VEROPOWER SBC series are sub-miniature single output high efficiency isolated DIP or SIL dc-dc converters. Designed to be driven from a regulated supply, these units are intended to provide additional voltages locally avoiding the need for a multi-output power supply source.



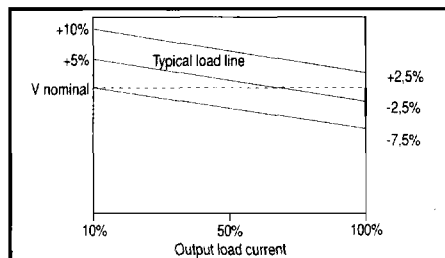
## FEATURES

- PCB mountable
- 1000 VDC isolation
- No derating to 70°C
- High efficiency - up to 80%
- 100% burned in
- Triple tested
- Low profile
- SIP and DIP styles
- MTBF typically >500000 hours at 25°C
- **12 MONTH WARRANTY**

## PIN ALLOCATION

SIL	Function	DIL	Function
1	GND <sub>IN</sub>	1	GND <sub>IN</sub>
2	V <sub>CC</sub>	4	V <sub>CC</sub>
3	0V <sub>OUT</sub>	5	+V <sub>OUT</sub>
4	+V <sub>OUT</sub>	7	0V <sub>OUT</sub>

## VOLTAGE TOLERANCE



## ELECTRICAL SPECIFICATIONS

All specifications are typical at nominal line, full load and 25°C unless otherwise stated.

### INPUT SPECIFICATION

Input voltage: <sup>Note 1</sup> (DC)	5V
Input voltage range (all models):	±10%

### OUTPUT SPECIFICATION

Output voltage for each input voltage: <sup>Note 2</sup> (DC)	5V, 12V, 15V
Voltage accuracy at 50% load (all models):	see voltage tolerance graph
Ripple (typical at 20MHz bandwidth):	110 mV p-p
Short circuit protection:	short term

### REGULATION

Line 10% - 100% full load (all models):	1,2% /1% V <sub>IN</sub>
Load 10% - 100% full load (all models):	±10%

### ISOLATION

Resistance:	10 <sup>3</sup> Ω
Voltage min:	1000 VDC

### ENVIRONMENTAL SPECIFICATION

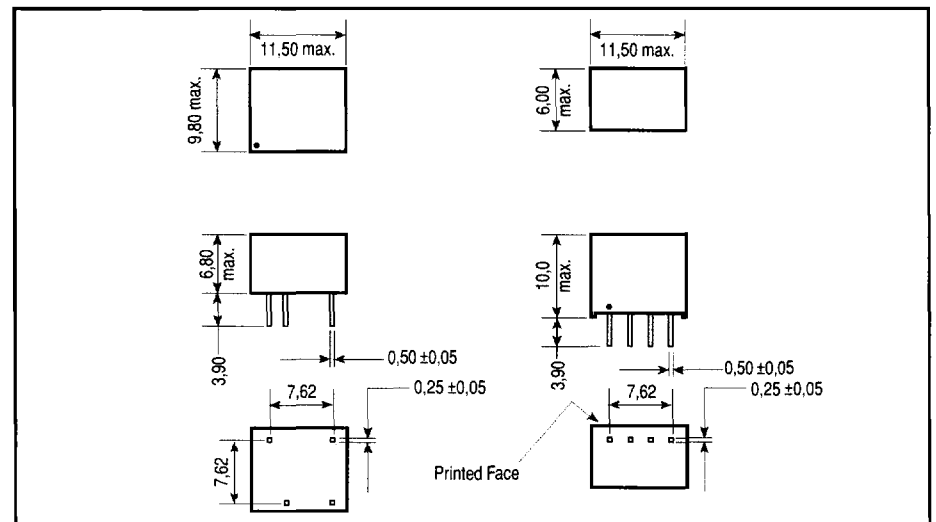
Temperature - operating:	-50°C to +100°C
Temperature - storage:	-55°C to +110°C
Derating: (from 70°C)	for temperatures outside operating range contact technical sales

### PHYSICAL SPECIFICATION

Dimensions (mm max)	SIL:	11,5 wide x 6,0 deep x 10,0 high
	DIL:	11,5 wide x 9,8 deep x 6,8 high
Weight:	SIL / DIL:	1,5g
Case material:		non-conductive plastic to UL94-V0

<sup>Note 1</sup> 24V and 48V input versions are available to special order - please contact Technical Sales

<sup>Note 2</sup> Alternative output voltages are available to special order - please contact Technical Sales



## VEROPOWER SBC SERIES 1W CONVERTER

## Ordering information

Output Voltage/Current	Order code	
	5 VDC input SIL	5 VDC input DIL
5V/200mA	153-001101D	153-001104C
12V/84mA	153-001102L	153-001105K
15V/67mA	153-001103G	153-001106F

Supplied as Pkt. 10 pcs.

Alternative outputs to special order - typically 8 weeks delivery.