



Copyright FCI.

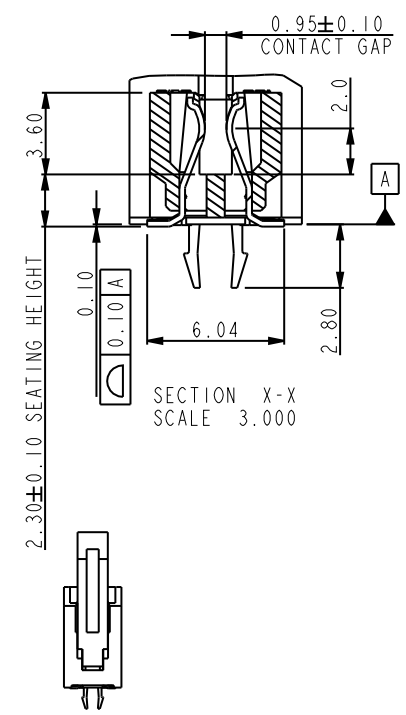
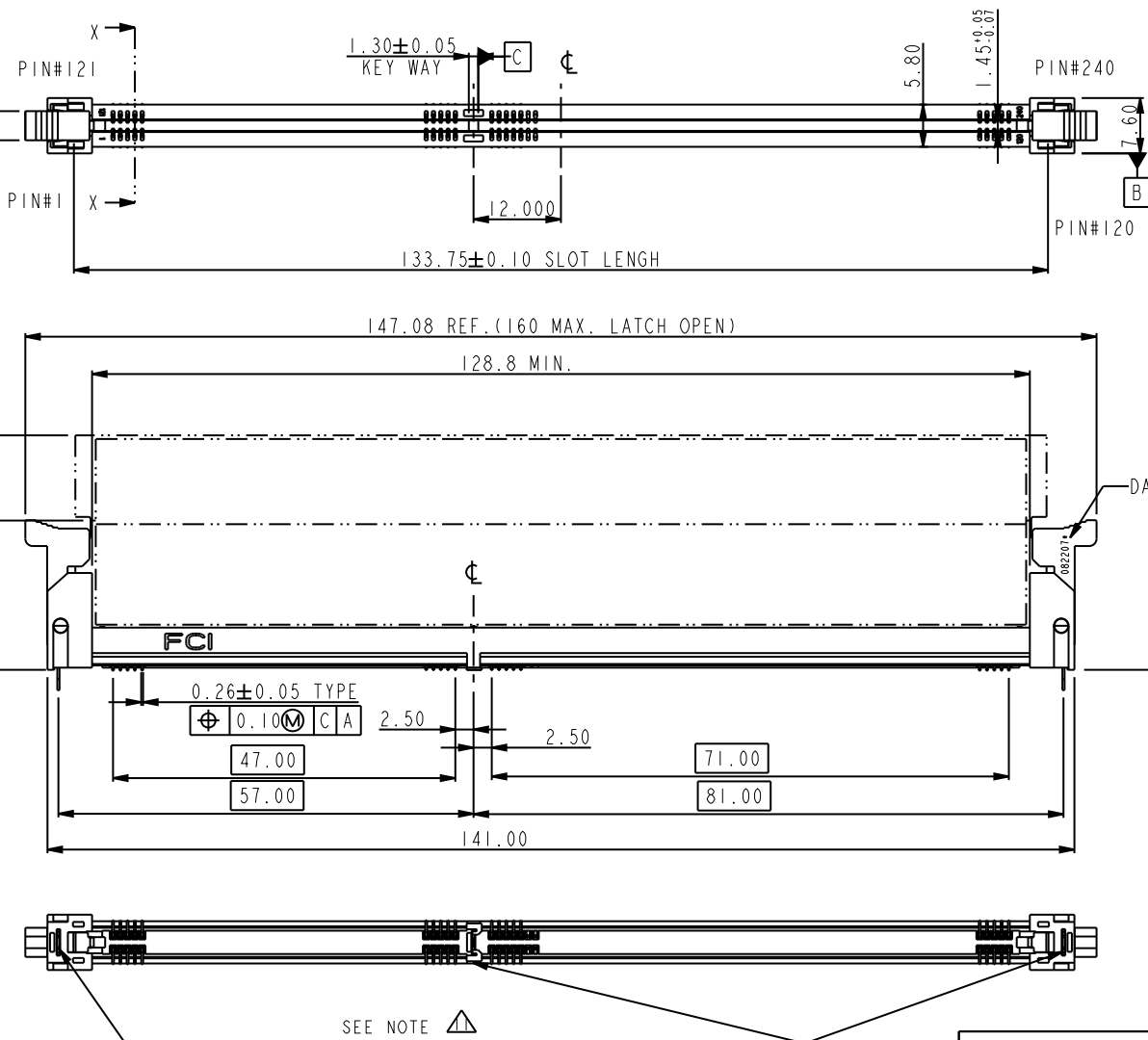
A

B

C

D

32.20 REF. (FOR 30mm MODULE HEIGHT)
20.50 REF. (FOR 18.3mm MODULE HEIGHT)



A


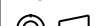


B

C

D

REV F - 2006-04-17

rev	ecn no	dr	date
R	N11-0012	SH	2011-01-05
S	DG11-0085	NZ	2011-03-29
K	DG09-0094	BL	03/17/09
L	DG09-0238	BL	07/26/09
M	DG09-0308	BL	09/18/09
N	N10-0076	R.B	03/22/2010

www.fciconnect.com			surface 		tolerance std		projection 				
			TOLERANCES UNLESS OTHERWISE SPECIFIED								
Dr	CHARLIE S	05/18/07	ANGULAR	LINEAR	0.X	± 0.30	size A4	Scale 1.000			
Eng	SH MIAO	05/18/07			0.XX	± 0.15					
Chr	GARY HSIEH	05/18/07			0.XXX	± 0.5					
Appr	JOSEPH HSIA	05/18/07	Product family					ECN N11-0012			
								Spec ref		*	
			title SMT DDRIII SOCKET ASS'Y			dwg no 10079248		Rev. S			
			DDRIII, 240P SOCKET(FOR RDIMM MODULE)								
			catalog no *			CUSTOMER		sheet 1 of 4			



D



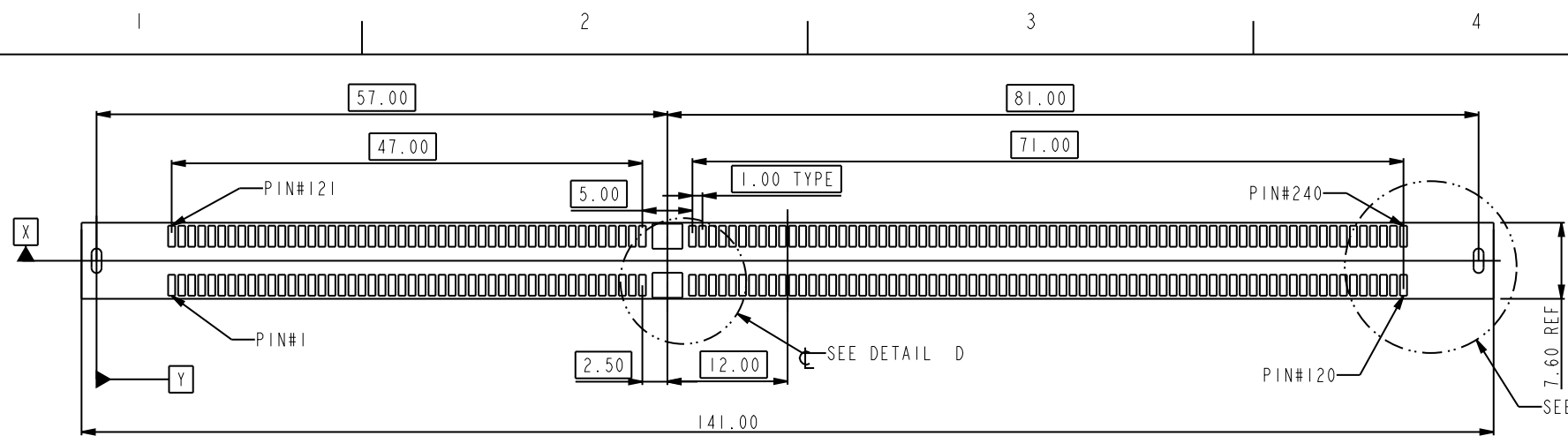
D



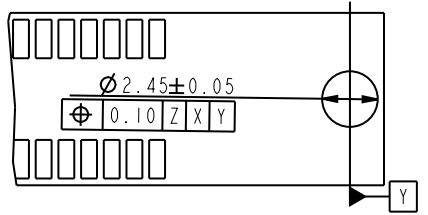
D



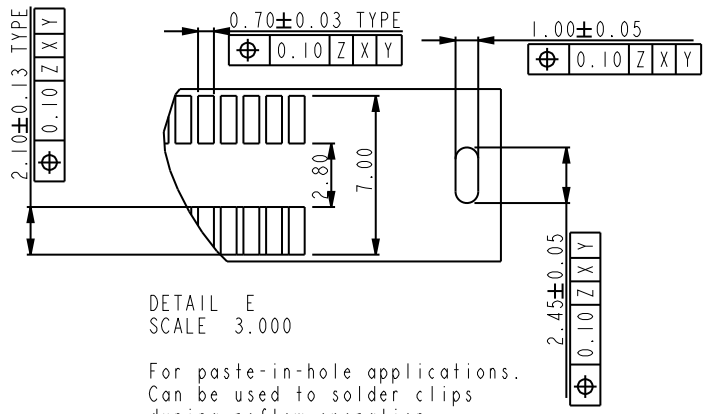
Copyright FCI.



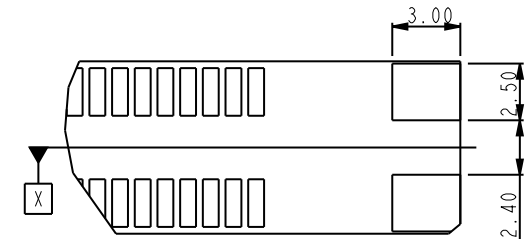
RECOMMEND CIRCUIT BOARD LAYOUT



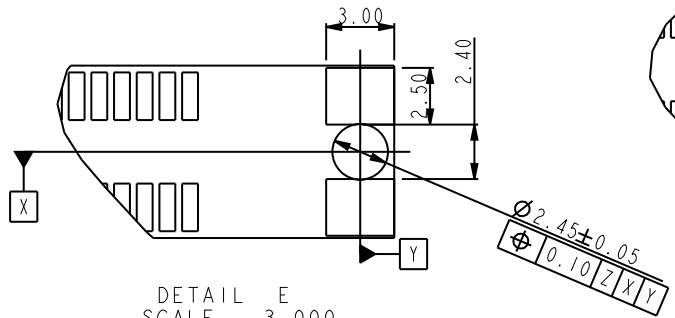
DETAIL E
SCALE 3.000
Standard hole for
hold-down clips



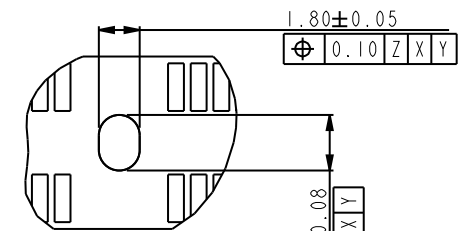
DETAIL E
SCALE 3.000
For paste-in-hole applications.
Can be used to solder clips
during reflow operation.



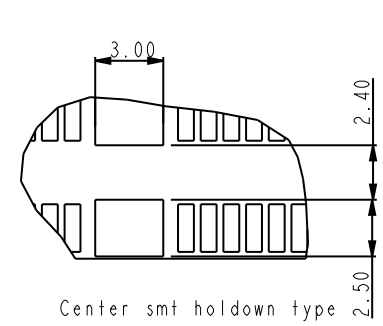
DETAIL E
SCALE 3.000
For smt holddown type



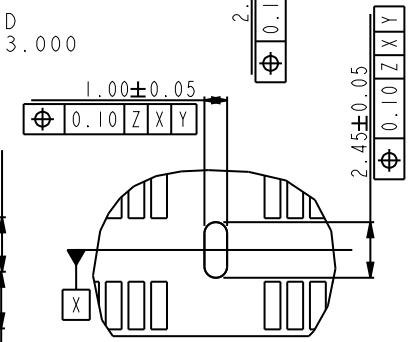
DETAIL E
SCALE 3.000
For 3smt holddown + 2plastic post type



Center post type
DETAIL D
SCALE 3.000



Center smt holddown type
DETAIL D
SCALE 3.000



Center forklock type
DETAIL D
SCALE 3.000



title	SMT DDRIII SOCKET ASS'Y
	DDRII, 240P SOCKET(FOR RDIMM MODULE)
catalog no	*

dwg no	10079248
CUSTOMER	

Rev.
S

sheet 3 of 4

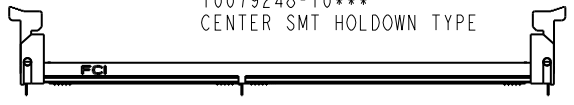


Copyright FCI.



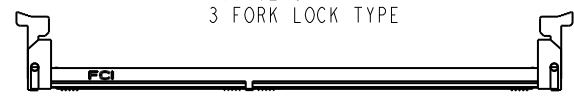
SCALE 0.500

10079248-10***
CENTER SMT HOLDOWN TYPE



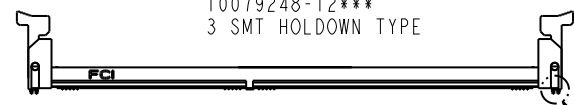
SCALE 0.500

10079248-11***
3 FORK LOCK TYPE



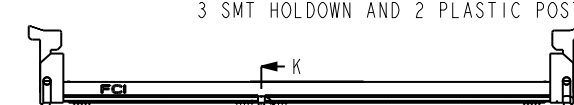
SCALE 0.500

10079248-12***
3 SMT HOLDOWN TYPE



SCALE 0.500

10079248-13***
3 SMT HOLDOWN AND 2 PLASTIC POST TYPE



SCALE 0.500

10079248-15***
3 PLASTIC POST TYPE

NOTES:

1. MATERIAL:
HOUSING: HIGH PERFORMANCE RESINS, GLASS FILLED UL94V-0 RATED.
EJECTOR: HIGH PERFORMANCE RESINS, GLASS FILLED UL94V-0 RATED.
TERMINAL: HIGH PERFORMANCE COPPER ALLOY
METAL CLIP: COPPER ALLOY.
2. FCI LOGO TO BE APPROXIMATELY LOCATED AS SHOWN ON PRINT.
3. PRODUCT SPECIFICATION: GS-12-486.
4. PACKAGING SPECIFICATION: GS-14-899.
5. RECOMMENDED STENCIL THICKNESS NO LESS THAN 0.15 mm.
6. FOR OPTIMUM PERFORMANCE, THE TIE BAR IS TO BE ON AN INTERNAL LAYER SO THAT THE REMNANT CANNOT CAUSE CONTACT DAMAGE.
7. THE DATE CODE IS SHOWN "MMDDYY*". "*" MEANS PRODUCTION LINE.
8. THIS PRODUCT MEETS EUROPEAN UNION DIRECTIVES AND OTHER COUNTRY REGULATIONS AS DESCRIBED IN GS-22-008.
9. THE HOUSING WILL WITH STAND EXPOSURE TO 260°C PEAK TEMPERATURE FOR 10 SECONDS IN AN IR REFLOW SOLDERING APPLICATION.
10. PRODUCT APPLICATION SPEC GS-20-089.
11. THE HOLDOWN TYPES ARE OPTION FOR HOLDOWN OR FORKLOCK.

STYLE : MECHANICAL KEYING

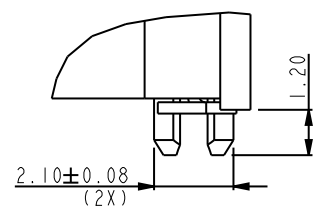
1 : 1.5 VOLT. W/ CENTER KEY

HOLD DOWN TYPE

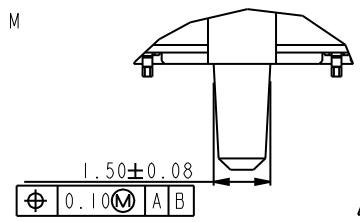
- 0 : CENTER HOLD DOWN, FORKLOCK AT BOTH END
1 : 3 FORKLOCK TYPE
2 : 3 SMT HOLDOWN TYPE
3 : 3 SMT HOLDOWN AND 2 PLASTIC POST
5 : 3 PLASTIC POST TYPE

PACKAGE AND MYLAR OPTION

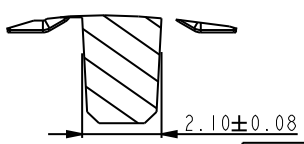
- 0 : SOFT TRAY WITHOUT MYLAR
1 : HARD TRAY WITH MYLAR 1
2 : HARD TRAY WITHOUT MYLAR
3 : SOFT TRAY WITH MYLAR 1
4 : SPECIAL HARD TRAY WITH MYLAR 1
5 : SPECIAL HARD TRAY WITHOUT MYLAR
6 : HARD TRAY WITH MYLAR 2
7 : SOFT TRAY WITH MYLAR 2
8 : SPECIAL HARD TRAY WITH MYLAR 2



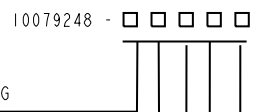
DETAIL N
SCALE 5.000



DETAIL J
SCALE 5.000



SECTION K-K
SCALE 5.000

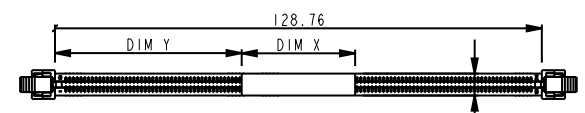


PLATING

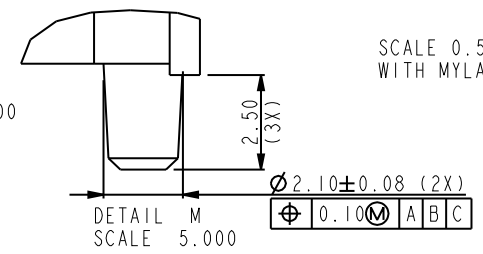
CODE	CONTACT	SOLDERTAIL	UNDERPLATE	NOTE
1	10u" (0.25um) MIN. GOLD	100u" (2.54um) MIN. TIN-LEAD	50u" (1.27um) MIN. NICKEL OVERALL	CONTACT NON-LUBRICANT
2	15u" (0.38um) MIN. GOLD			
3	30u" (0.76um) MIN. GOLD			
4	GOLD FLASH			
5	10u" (0.25um) MIN. GOLD	100u" (2.54um) MIN. 100% MATT TIN	50u" (1.27um) MIN. NICKEL OVERALL	CONTACT LUBRICATED
6	15u" (0.38um) MIN. GOLD			
7	30u" (0.76um) MIN. GOLD			
8	GOLD FLASH			
1LF	10u" (0.25um) MIN. GOLD	100u" (2.54um) MIN. 100% MATT TIN	50u" (1.27um) MIN. NICKEL OVERALL	CONTACT NON-LUBRICANT
2LF	15u" (0.38um) MIN. GOLD			
3LF	30u" (0.76um) MIN. GOLD			
4LF	GOLD FLASH			
5LF	10u" (0.25um) MIN. GOLD	100u" (2.54um) MIN. 100% MATT TIN	50u" (1.27um) MIN. NICKEL OVERALL	CONTACT LUBRICATED
6LF	15u" (0.38um) MIN. GOLD			
7LF	30u" (0.76um) MIN. GOLD			
8LF	GOLD FLASH			

COLOR OF HOUSING AND EJECTOR

- 0 : BLACK HOUSING + IVORY EJECTOR
1 : BLACK HOUSING + BLACK EJECTOR
2 : BLACK HOUSING + BLUE(661C) EJECTOR
3 : BLACK HOUSING + YELLOW(123C) EJECTOR



SCALE 0.500
WITH MYLAR TAPE (OPTIONAL)



DETAIL M
SCALE 5.000



title SMT DDRIII SOCKET ASS'Y
DDR11,240P SOCKET(FOR RDIMM MODULE)
catalog no *

dwg no 10079248
Rev. S
CUSTOMER sheet 4 of 4