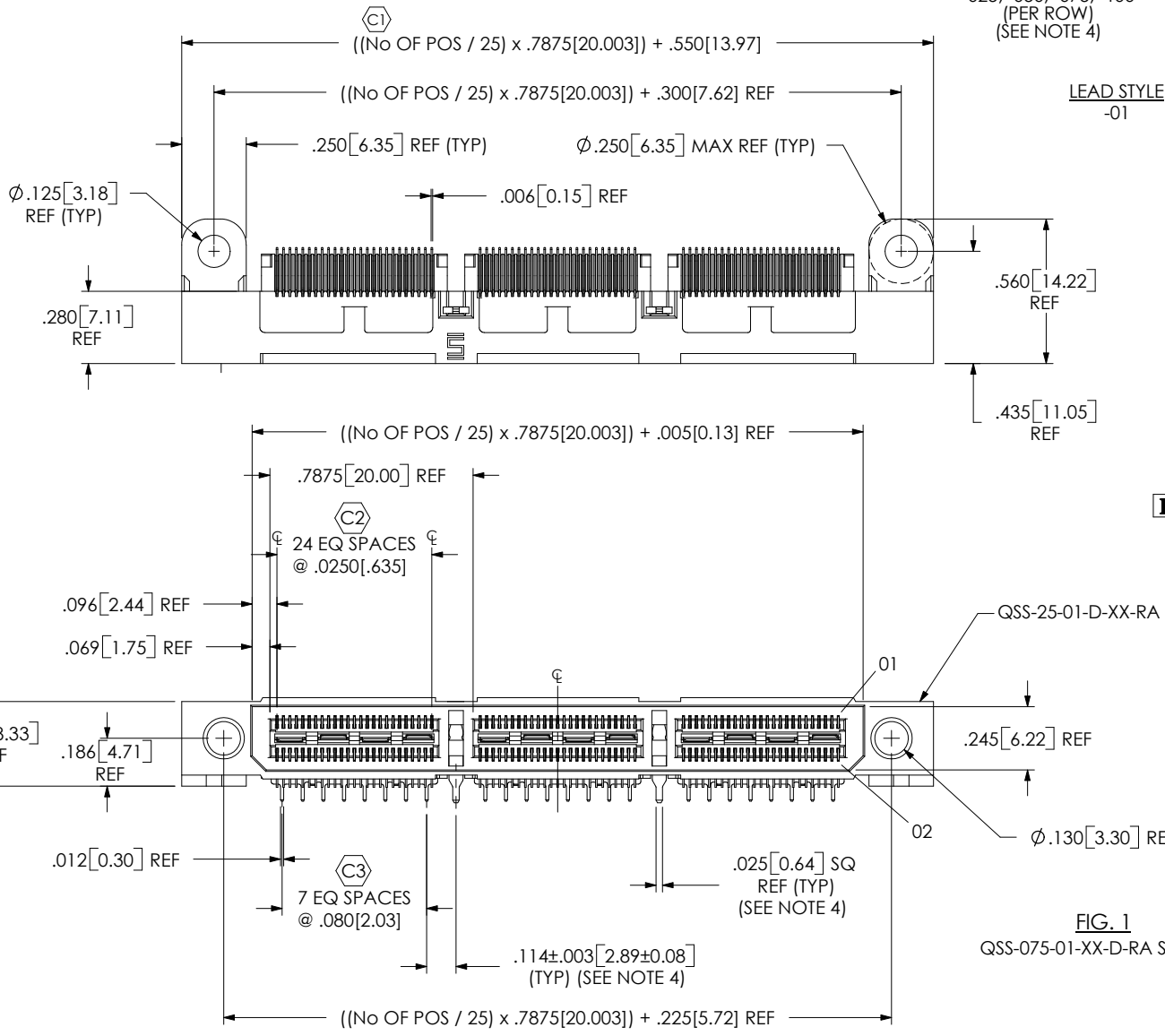


# REVISION

QSS-XXX-01-XX-D-RA-WT-XXX

3	CF	J FERRY
2/18/2003	ECN-23933	
ADD -LS OPTION, ADD SHT 3.		
4	KB	J FERRY
2/27/2003	ECN-24164	
CHG CALLOUT FROM QSS-XXX-01-X-D-RA-WT-XX TO QSS-XXX-01-X-D-RA-WT-XXX BY CHG -LS TO -LS1, ADD "FOR MATING WITH A QTS...-RA...LS1" UNDER -LS1 OPTION (CALLOUT).		
A	DP	J REID
6/28/2003	ECN-28969	
RELEASE FOR PRODUCTION, NOTES, NOTE 3. CHG PUSH OUT FORCE FROM .5 LB TO 6 OZ.		
B	KB	J REID
7/25/2003	ECN-27487	
CHG CALLOUT FROM QSS-XXX-01-X-D-RA-WT-XX TO QSS-XXX-01-X-D-RA-WT-XXX BY CHG -LS TO -LS1, ADD "FOR MATING WITH A QTS...-RA...LS1" UNDER -LS1 OPTION (CALLOUT).		
C	DP	J REID
12/15/2003	ECN-31238	
RELEASE -LS1 OPTION FOR PRODUCTION.		
D	TS	D DECKER
9/9/2004	ECN-38846	
ADD NOTE 7, DESIGNED FOR USE WITH A .062 THICK PCB.		
E	TW	E MESSER
3/9/2005	ECN-44272	
SHEET 2, DEL. TUBE VIEW; SHEET 1, ADD NOTE 8 FOR TRAY PACKAGING.		
F	RC	D DECKER
11/1/2005	ECN-52252	
ADD -FM, -LM AND -HM PLATING OPTIONS. CHG CALLOUT FROM QSS-XXX-01-X-D-RA-WT-XXX TO QSS-XXX-01-XX-D-RA-WT-XXX		



No OF POSITIONS  
-025, -050, -075, -100  
(PER ROW)  
(SEE NOTE 4)

LEAD STYLE  
-01

OPTION  
-LS1: LOCKING SCREW  
(SEE FIG. 2, SHT 3)  
(FOR MATING WITH  
QTS...-RA...LS1)

-WT: WELD TAB  
N/A ON 25 POSITION

-RA: RIGHT ANGLE

ROW SPECIFICATION  
-D: DOUBLE (USE QSS-25-01-D-XX-RA)

PLATING SPECIFICATION

(NOTE: GROUND PLANE SOLDER TAILS & WELD TAB SOLDER TAILS "-T" PLATING)  
-F: FLASH GOLD  
(USE C-177-01-F, C-178-01-F, IM-1G18-01-1-F & WT-16-02-T) (SEE NOTE 5)  
-L: LIGHT GOLD  
(USE C-177-01-L, C-178-01-L, IM-1G18-01-1-L & WT-16-02-T)  
-H: HEAVY GOLD  
(USE C-177-01-H, C-178-01-H, IM-1G18-01-1-L & WT-16-02-T)  
-FM: FLASH SELECTIVE GOLD, MATTE TIN TAIL  
(USE C-177-01-FM, C-178-01-FM, IM-1G18-01-1-F & WT-16-02-T)  
-LM: LIGHT SELECTIVE GOLD, MATTE TIN TAIL  
(USE C-177-01-LM, C-178-01-LM, IM-1G18-01-1-L & WT-16-02-T)  
-HM: HEAVY SELECTIVE GOLD, MATTE TIN TAIL  
(USE C-177-01-HM, C-178-01-HM, IM-1G18-01-1-H & WT-16-02-T)

**THIS DESIGN HAS NOT BEEN APPROVED BY ENGINEERING DO NOT DISTRIBUTE THIS PRINT**

FIG. 1  
QSS-075-01-XX-D-RA SHOWN

NOTES:

1.  $\text{C}$  REPRESENTS A CRITICAL DIMENSION.
2. BURR ALLOWANCE: .0010 MAX.
3. MINIMUM PUSHOUT FORCE: 6 OZ.
4. WELD TABS (WT-16-02-T) NOT AVAILABLE ON -025 POSITION.
5. IF NEEDED, -L PLATING CAN BE SUBSTITUTED FOR -F PLATING.
6. IM-1G18-01-1-X RETENTION TO BE 1.0 LBS. MINIMUM PRIOR TO SECOND ROW FILL.
7. DESIGNED FOR USE WITH A .062 THICK PCB
8. ASSEMBLIES TO BE PACKAGED IN TRAYS.

UNLESS OTHERWISE SPECIFIED, DIMENSIONS ARE IN INCHES.  
TOLERANCES ARE:  
DECIMALS ANGLES  
.XX:  $\pm .01$  [.3]  
.XXX:  $\pm .005$  [.13]  
.XXXX:  $\pm .0020$  [.051]

PROPRIETARY NOTE  
THIS DOCUMENT CONTAINS INFORMATION CONFIDENTIAL AND PROPRIETARY TO SAMTEC, INC. AND SHALL NOT BE REPRODUCED OR TRANSFERRED TO OTHER DOCUMENTS OR DISCLOSED TO OTHERS OR USED FOR ANY PURPOSE OTHER THAN THAT WHICH IT WAS OBTAINED WITHOUT THE EXPRESSED WRITTEN CONSENT OF SAMTEC, INC.

**SAMTEC**

520 PARK EAST BLVD, NEW ALBANY, IN 47150  
PHONE: 812.944.6733 FAX: 812.948.5047  
e-Mail: [INFO@SAMTEC.COM](mailto:INFO@SAMTEC.COM) CODE: 55322

MATERIAL: DO NOT SCALE DRAWING SHEET SCALE: 1.5:1  
INSULATOR: LCP, COLOR: BLACK  
TERMINAL, GROUND PLANE & WELD TAB: PHOS BRONZE



DESCRIPTION:  
.635mm DOUBLE ROW RIGHT ANGLE SOCKET STRIP

DWG. NO. **F**  
QSS-XXX-01-XX-D-RA-WT-XXX

BY: KEVIN B 01/22/02 SHEET 1 OF 3

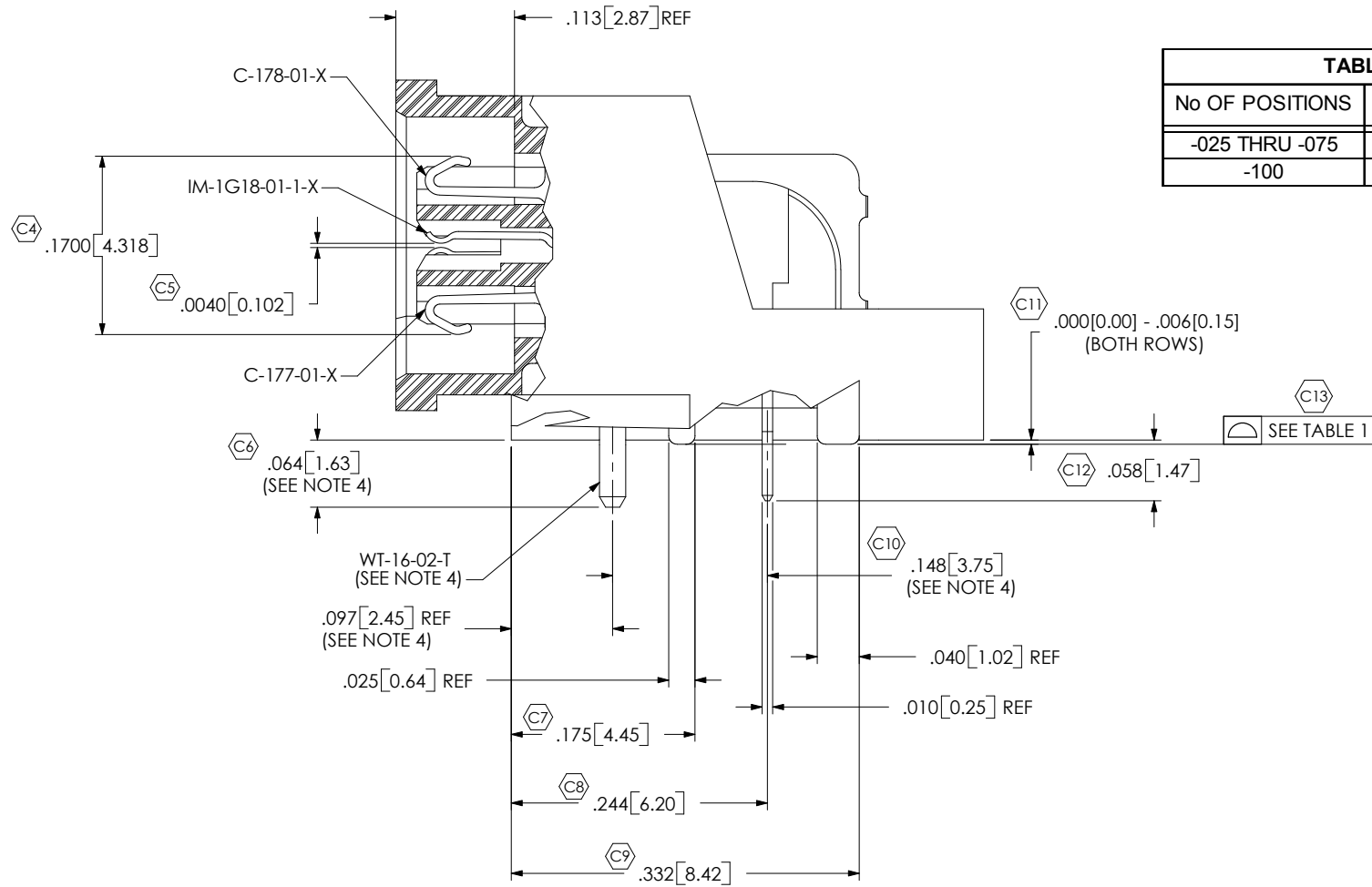


TABLE 1	
No OF POSITIONS	COPLANARITY
-025 THRU -075	.004[0.10]
-100	.006[0.15]

**PROPRIETARY NOTE**  
 THIS DOCUMENT CONTAINS INFORMATION CONFIDENTIAL AND PROPRIETARY TO SAMTEC, INC. AND SHALL NOT BE REPRODUCED OR TRANSFERRED TO OTHER DOCUMENTS OR DISCLOSED TO OTHERS OR USED FOR ANY PURPOSE OTHER THAN THAT WHICH IT WAS OBTAINED WITHOUT THE EXPRESSED WRITTEN CONSENT OF SAMTEC, INC.

DO NOT SCALE DRAWING  
 SHEET SCALE: 6:1

**SAMTEC**

520 PARK EAST BLVD, NEW ALBANY, IN 47150  
 PHONE: 812.944.6733 FAX: 812.948.5047  
 e-Mail: [INFO@SAMTEC.COM](mailto:INFO@SAMTEC.COM) CODE: 55322

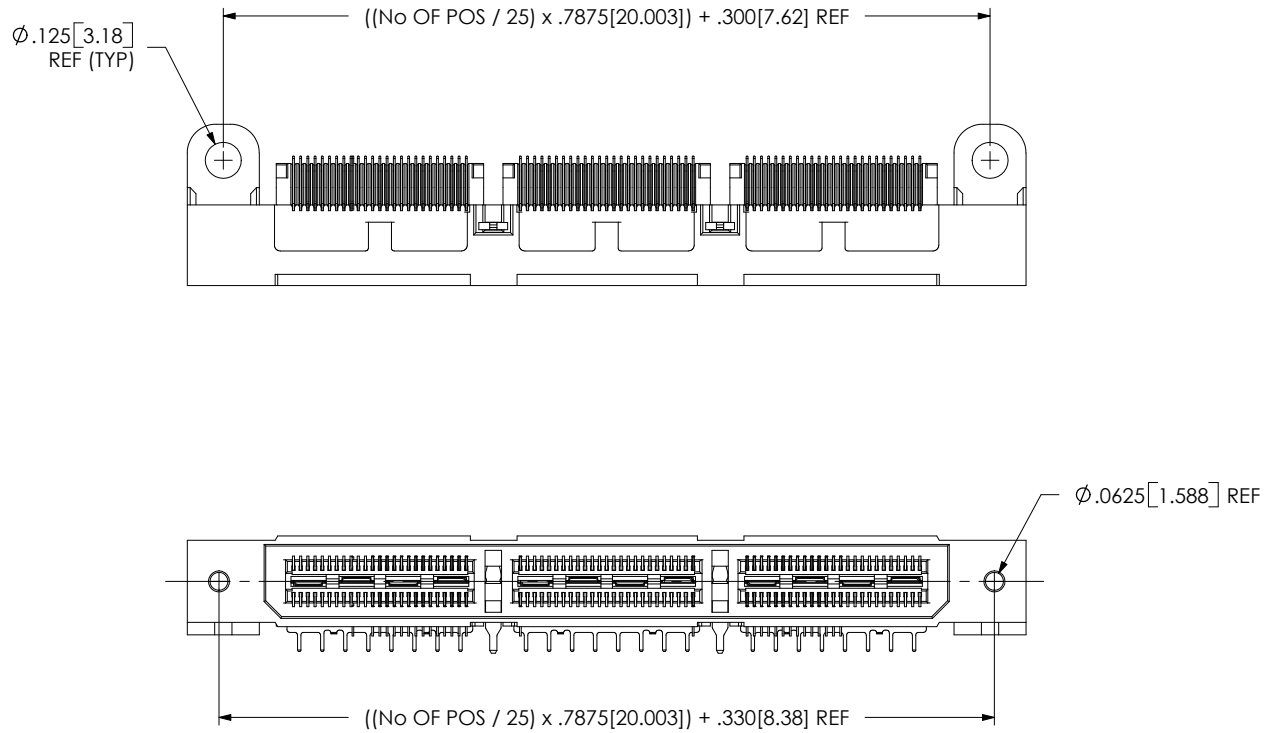
DESCRIPTION:  
 .635mm DOUBLE ROW RIGHT ANGLE SOCKET STRIP

DWG. NO.  
**QSS-XXX-01-XX-D-RA-WT-XXX**

BY: KEVIN B 01/22/02 SHEET 2 OF 3

FIG. 2

QSS-075-01-X-D-RA-LS1 SHOWN  
(SAME AS FIG. 1, EXCEPT AS SHOWN)



PROPRIETARY NOTE

THIS DOCUMENT CONTAINS INFORMATION CONFIDENTIAL AND PROPRIETARY TO SAMTEC, INC. AND SHALL NOT BE REPRODUCED OR TRANSFERRED TO OTHER DOCUMENTS OR DISCLOSED TO OTHERS OR USED FOR ANY PURPOSE OTHER THAN THAT WHICH IT WAS OBTAINED WITHOUT THE EXPRESSED WRITTEN CONSENT OF SAMTEC, INC.

DO NOT SCALE DRAWING

SHEET SCALE: 1.5:1

**SAMTEC**

520 PARK EAST BLVD, NEW ALBANY, IN 47150  
PHONE: 812.944.6733 FAX: 812.948.5047  
e-Mail: [INFO@SAMTEC.COM](mailto:INFO@SAMTEC.COM) CODE: 55322

DESCRIPTION:  
.635mm DOUBLE ROW RIGHT ANGLE SOCKET STRIP

DWG. NO.  
QSS-XXX-01-XX-D-RA-WT-XXX

BY: KEVIN B 01/22/02 SHEET 3 OF 3