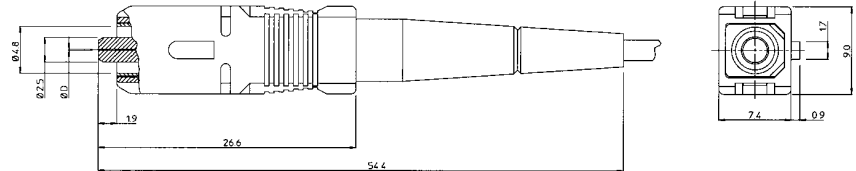


SC Connectors



SC Plug - Simplex

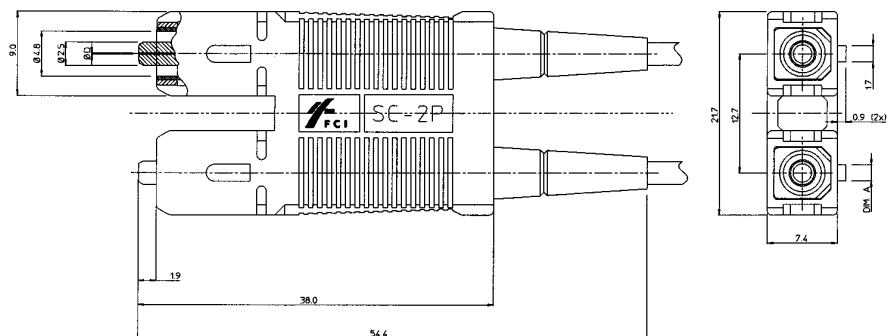


Standard ferrule for single mode and for multimode is zirconia.
 Polymer ferrules for multimode on request.
 Standard ferrule hole diameter is 126 μ m. For other diameters, consult FCI.
 Cable sizes are standard 2.4 to 3.0 mm.

Part Number (*)	Description
Pre-assembled version	
SC P 21S0601	SC Plug, Simplex, Single mode, Dome Polish
SC P 21A0601	SC Plug, Simplex, Single mode, Angled Polish
SC P 21M0601	SC Plug, Simplex, Multimode, Dome Polish

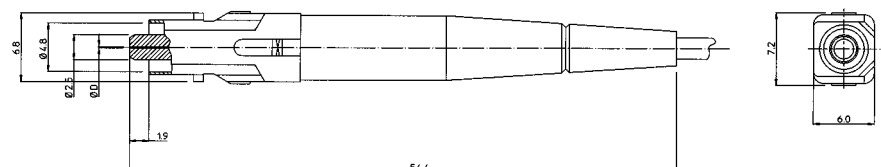
(*) Replace last digit by 4 for bare fibre termination.

SC Plug - Duplex



Standard ferrule for single mode and for multimode is zirconia.
 Polymer ferrules for multimode on request.
 Standard ferrule hole diameter is 126 μ m.
 For other diameters, consult FCI.
 Cable sizes are standard 2.4 to 3.0 mm.

Simplex, high density (only for duplex horizontal adaptor)



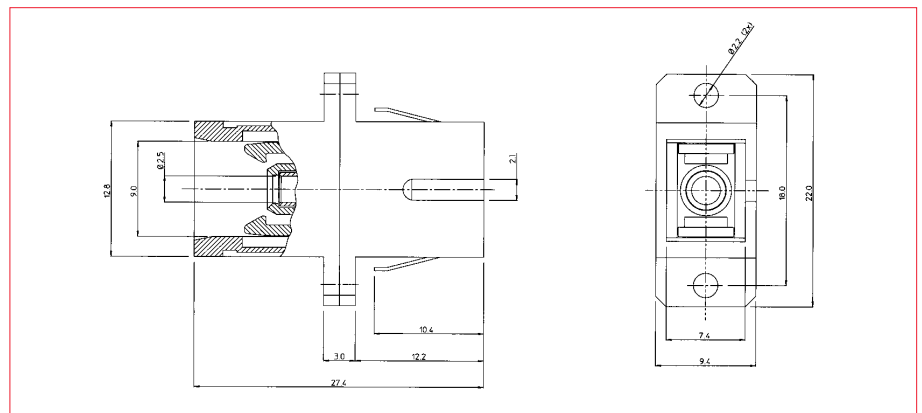
SC Connectors



Part Number (*)	Description	DIM A
Pre-assembled version		
SC P 22S0601	SC Plug, High Density, Single mode, Dome Polish	—
SC P 22A0601	SC Plug, High Density, Single mode, Angled Polish	—
SC P 22M0601	SC Plug, High Density, Multimode, Dome Polish	—
SC P 23S0601	SC Plug, IEC Duplex, Single mode, Dome Polish	1,7
SC P 23A0601	SC Plug, IEC Duplex, Single mode, Angled Polish	1,7
SC P 23M0601	SC Plug, IEC Duplex, Multimode, Dome Polish	1,7
SC P 24S0601	SC Plug, Fibre Channel Duplex, Single mode, Dome Polish	1,0
SC P 24A0601	SC Plug, Fibre Channel Duplex, Single mode, Angled Polish	1,0

(*) Replace last digit by 4 for bare fibre termination.

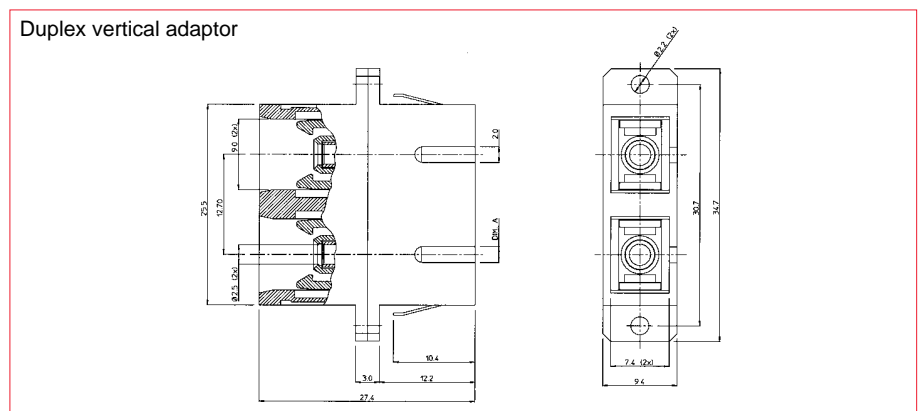
SC Adaptor - Simplex



Standard split sleeve for single mode is zirconia and for multimode phosphor bronze.

Part Number	Description
SC A 011	SC Simplex Adaptor, Single mode
SC A 012	SC Simplex Adaptor, Multimode

SC Adaptor - Duplex



Standard split sleeve for single mode is zirconia and for multimode phosphor bronze.

Technical drawing of the SC2-2A connector. The left side shows a cross-section of the connector with dimensions: 13.8, 7.2, 8.75, 24.0, 3.0, 10.5, 8.7, 25.4, and 6.8. The right side shows a top view of the connector with dimensions: 15.0, 6.0, 14.6, and 9.0. The top view also includes the label 'SC2-2A'.

Conversion adaptors for ST®II and FC/PC connectors

