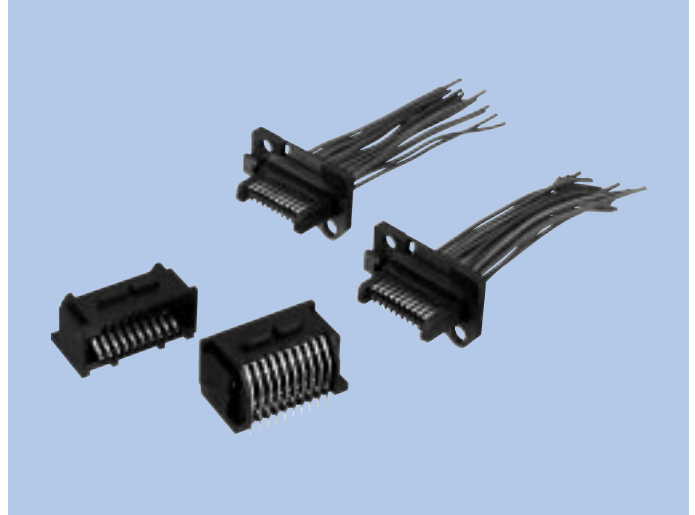


Rack & Panel Connectors M96 Series

FEATURES

1. These connectors are used for the connection of power and signal between unit and rack of various electronic devices.
2. Plug assembly is wire crimp type, and socket is dip-solder type.
3. Plug can be mounted to the frame of the unit easily with "L" hook and screw.
4. Floating range can be adjusted with floating bushing.
5. Same contacts are used for power supply and signal.



HOW TO ORDER

1. Plug Assembly

M96-20-□□□□-PA
 1 2 3 4

- 1 Series No.
- 2 No. of contacts (20 : 20pins)
- 3 Running No. assigned by us (———)
- 4 Contact tail style (PA : Plug Assembly)

2. Components for Plug

Component Parts	AWG No.	Part No.
Housing	—	M96-M73-20
Contact	AWG18-20	M96C75
	AWG22-24	M96C75-1
	AWG26-28	M96C75-2

3. Socket

M96-20-30-135
 1 2 3 4

- 1 Series No.
- 2 No. of contacts (20 : 20pins)
- 3 Housing material (30 : PBT resin)
- 4 Contact finish (5 : Gold selective)

SPECIFICATIONS

ELECTRICAL CHARACTERISTICS

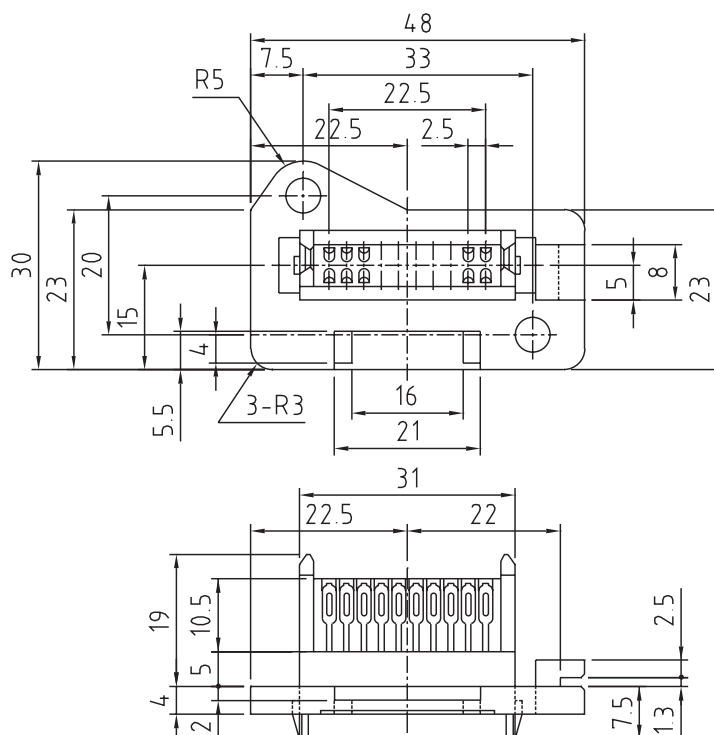
Rated Voltage	14V DC
Rated Current	5A
Withstanding Voltage	500V AC (rms) 1 minute
Insulation Resistance	100MΩ min. (at 500V DC)
Contact Resistance	50mΩ max.

MATERIAL & FINISH

Component parts		Material	Finish
Plug	Housing	Glass filled PBT resin	---
	Contact	Copper Alloy	Gold selective plating
Socket	Housing	Glass filled PBT resin	---
	Contact	Copper Alloy	Gold selective plating

DIMENSIONS

CC-M96 Series



CA-M96 Series

