



Applications

Equipments on offshore platform

Standards

Ex d II BT6



Description

- Explosion proof connectors for use in hazardous areas
 - screw locking system
- Explosion proof certification by B.A.S.E.E.F.A. (British Approvals Service for Electrical Equipment in Flammable Atmosphere)

Characteristics

Mechanical

- Shell :
 - nickel aluminium bronze
 On request others metals are available
- Insulator :
 - Moulded rubber
- Contacts :
 - copper alloy with gold plate

- Working pressure (mated or not mated connectors)
- Shell size : 1, 2, 3, 4, 7
 - Fitted with cable gland endbell : 300 bars
 - Shell size 5,6
 - Fitted with all endbell types : 150 bars
- Shocks (shell size 1, 2, 3, 4, 7)
 - 75 g - 11 ms (3 axis)
- Vibrations
 - 0,1 Hz to 1 Hz : ± 25 mm
 - 1 Hz to 5 Hz : 0,1 g acceleration
 - 5 Hz to 22 Hz : ± 1 mm
 - 22 Hz to 50 Hz : 2g acceleration

Marking code

Ex "d" IIB T6

LCIE approval n° 90C 0003 U

- **Ex** Equipment designed for use in hazardous areas.
- **"d"** Symbol designating protection for flameproof enclosure. This enclosure must withstand, by its construction, the pressure developed by an internal explosion and prevent its transmission to the external atmosphere.
- **IIB** For use in all industries except mines with fire-damp and oxygen-hydrogen atmospheres. This is the classification of the product that can be found in the atmosphere. In this case Gas Group, II Sub-Division B...
- **T6** This is the maximum surface temperature of the connector $< 85^{\circ}\text{C}$

Electrical

	Max Current rating per ct (A)	Withstanding voltage (Vrms)	Contact resistance (mΩ)
# 16	15	2500 V	≤ 10
# 20	7.5	2500 V	≤ 10

- Insulation resistance

Climatic

- Working temperature
 - Ambient - 30°C to $+ 70^{\circ}\text{C}$
 - Subsea - 3°C to $+ 40^{\circ}\text{C}$



Ordering information

Stainless steel shell material

Shell size	Nr. of contacts	Plug	Receptacle	In-line receptacle
1	4	8810-26H-1-04S ADF A	8810-00H-1-04P ADF A	8810-01H-1-04P ADF A
2	4	8810-26H-2-04S ADF	8810-00H-2-04P ADF	8810-01H-2-04P ADF
	7	8810-26H-2-07S ADF A	8810-00H-2-07P ADF A	8810-01H-2-07P ADF A
3	12	8810-26H-3-12S ADF A	8810-00H-3-12P ADF A	8810-01H-3-12P ADF A
4	12	8810-26H-4-12S ADF	8810-00H-4-12P ADF	8810-01H-4-12P ADF
	19	8810-26H-4-19S ADF A	8810-00H-4-19P ADF A	8810-01H-4-19P ADF A
5	37	8810-26H-5-37S ADF A	8810-00H-5-37P ADF A	8810-01H-5-37P ADF A
6	68	8810-26H-6-68S ADF A	8810-00H-6-68P ADF A	8810-01H-6-68P ADF A
7	38	8810-26H-7-38S ADF	8810-00H-7-38P ADF	8810-01H-7-38P ADF

Aluminium bronze shell material

Shell size	Nr. of contacts	Plug	Receptacle	In-line receptacle
1	4	8810-36H-1-04S ADF A	8810-10H-1-04P ADF A	8810-11H-1-04P ADF A
2	4	8810-36H-2-04S ADF	8810-10H-2-04P ADF	8810-11H-2-04P ADF
	7	8810-36H-2-07S ADF A	8810-10H-2-07P ADF A	8810-11H-2-07P ADF A
3	12	8810-36H-3-12S ADF A	8810-10H-3-12P ADF A	8810-11H-3-12P ADF A
4	12	8810-36H-4-12S ADF	8810-10H-4-12P ADF	8810-11H-4-12P ADF
	19	8810-36H-4-19S ADF A	8810-10H-4-19P ADF A	8810-11H-4-19P ADF A
5	37	8810-36H-5-37S ADF A	8810-10H-5-37P ADF A	8810-11H-5-37P ADF A
6	68	8810-36H-6-68S ADF A	8810-10H-6-68P ADF A	8810-11H-6-68P ADF A
7	38	8810-36H-7-38S ADF	8810-10H-7-38P ADF	8810-11H-7-38P ADF

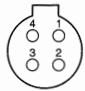
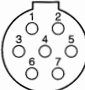

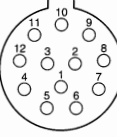
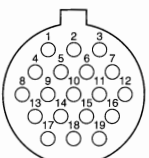
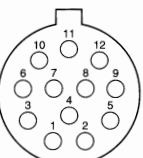
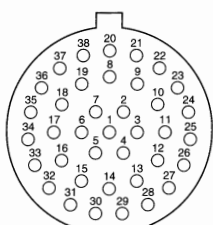
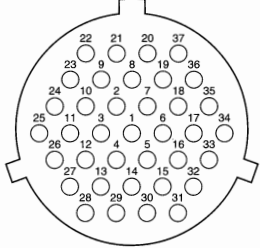
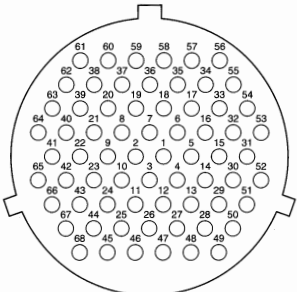
Aluminium bronze shell material

Shell size	min./Max. cable diameter (mm)	Standard endbell
1	7.8-8.8	8810-13-078-088
	8.7-9.7	8810-13-087-097
	9.5-10.5	8810-13-095-105
	10.5-11.5	8810-13-105-115
2	9.3-10.3	8810-23-093-103
	10.3-11.3	8810-23-103-113
	11.0-12.0	8810-23-110-120
	12.0-13.0	8810-23-120-130
3	9.5-11.0	8810-33-095-110
	11.0-12.5	8810-33-110-125
	12.5-14.0	8810-33-125-140
	14.0-15.5	8810-33-140-155
4	11.2-12.7	8810-43-112-127
	12.7-14.2	8810-43-127-142
	14.0-15.5	8810-43-140-155
	15.5-17.0	8810-43-155-170

Shell size	min./Max. cable diameter (mm)	Standard endbell
5	15.0-20.0	8810-53-150-200
	20.0-25.0	8810-53-200-250
	25.0-30.0	8810-53-250-300
	30.0-35.0	8810-53-300-350
6	22.0-28.0	8810-63-220-280
	28.0-34.0	8810-63-280-340
	34.0-40.0	8810-63-340-400
	40.0-45.0	8810-63-400-450
7	45.0-50.0	8810-63-450-500
	18.0-20.0	8810-73-180-200
	20.0-22.0	8810-73-200-220
	22.0-24.0	8810-73-220-240
	24.0-26.0	8810-73-240-260
	26.0-28.0	8810-73-260-280

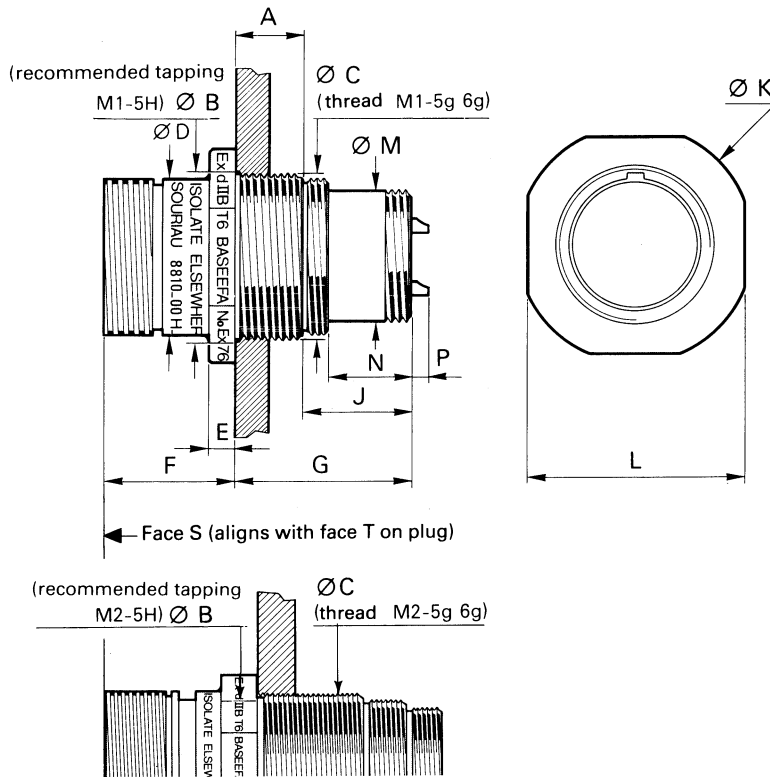


Contact layouts (female insulator rear view)

Layouts		Size 20 contacts		Size 16 contacts		Ø cable acceptance min./max. dia. (mm)
Shell size	Number of contacts	contact diameter : 1.0 mm wire size max : 0.93 mm ² current rating per contact : 7.5A max.		contact diameter : 1.57 mm wire size max : 1.34 mm ² current rating per contact : 15A max.		
1	4	4 # 20 0.93 mm ²				7.8 - 11.5
2	7 4	7 # 20 0.93 mm ²		4 # 16 1.34 mm ²		9.3 - 13
3	12	12 # 20 0.93 mm ²				9.5 - 15.5
4	19 12	19 # 20 0.93 mm ²		12 # 16 1.34 mm ²		11.2 - 17
7	38	38 # 20 0.93 mm ²				18 - 28
5	37			37 # 16 1.34 mm ²		15 - 35
6	68			68 # 16 1.34 mm ²		22 - 50



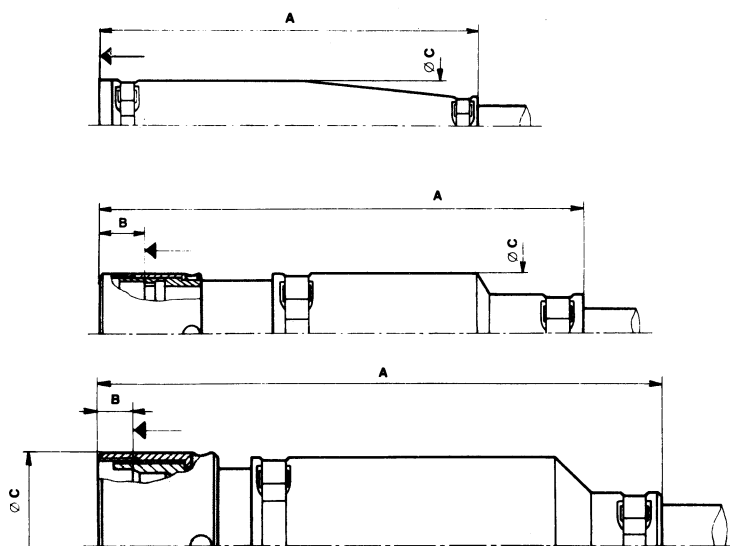
Receptacle



Shell size 1 to 6

Dimensions	Shell size					
	Contacts # 20 and # 16					
	1	2	3	4	5	6
A	13	13	13	13	43	43
B	23.5	26.5	32	36.5	70	89
C						
D	22	25	30	34.5	72	93
E	5	5	5	5	15	15
F	24	24	25	26	61	61
G	34	34	34	34	74	74
J	21	21	21	21	31	31
K	34.5	38	44	49	94	125
L	32	35	41.5	46	85	111
M	16.8 x 0.5	20 x 0.75	25.5 x 0.75	30 x 0.75	50 x 1.5	68.5 x 1.5
N	16	16	16	16	14	14
P	3	3	3	3	—	—

Standard cable gland endbell

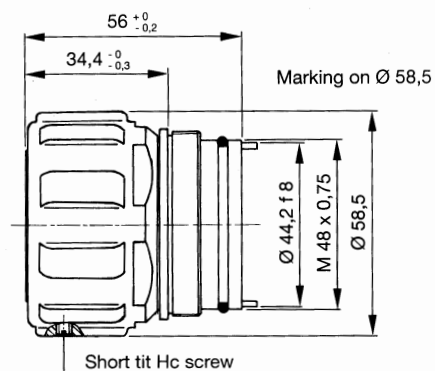


Shell size 1 to 7

Dimensions	Shell size						
	Contacts # 20 and # 16						
	1	2	3	4	7	5	6
A Max.	105	119	135	149	210	230	280
B Max.					18.6	14.9	14.9
Ø C Max.	26	29.4	35.7	40.7	50	79	99

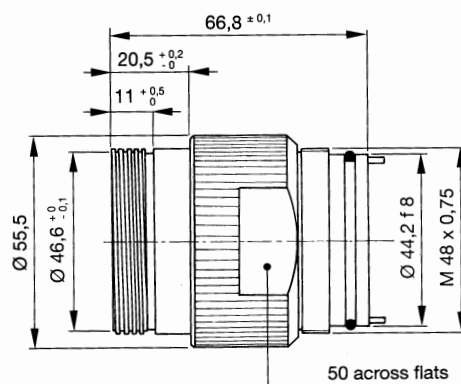


Plug



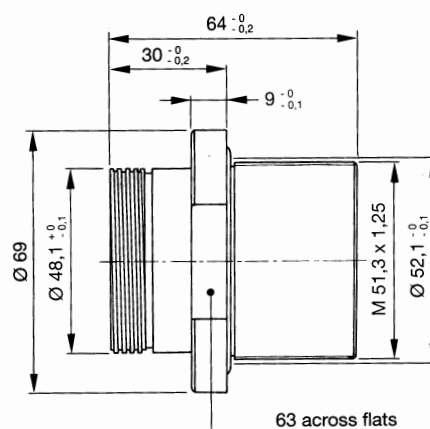
Shell size 7

In line receptacle



Shell size 7

Receptacle



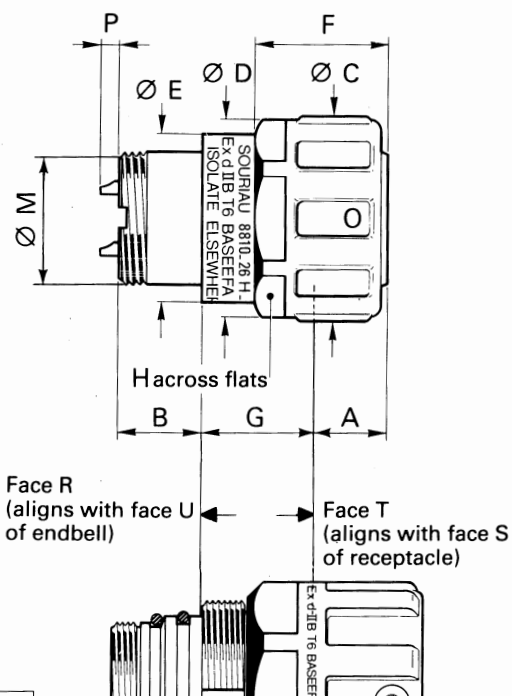
Shell size 7



Dimensions

(all are given in mm)

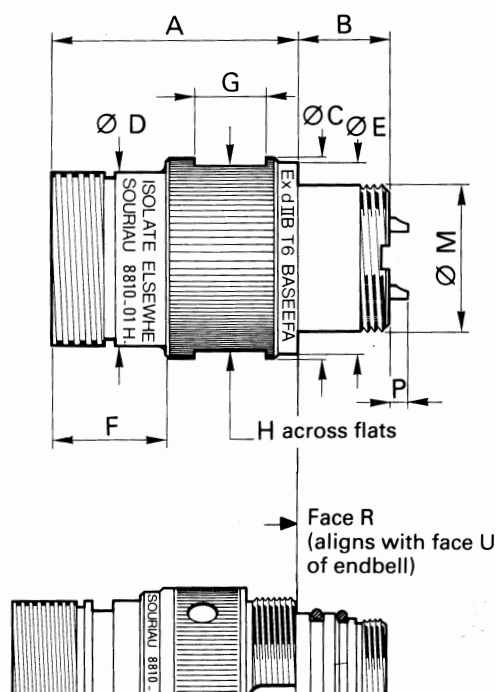
Plug



Shell size 1 to 6

Dimensions	Shell size					
	Contacts # 20 and # 16					
	1	2	3	4	5	6
A	17	17	18	19	44	44
B	16	16	16	16	33	33
C	30	33.5	39	43.5	88	110
D	28	32	37.5	42	88	110
E	24	27.5	33	37.5	74	96
F	24	24	24	24	64	64
G	17	17	16	15	36	36
H	26	29	34	38	80	100
M	16.8 x 0.5	20 x 0.75	25.5 x 0.75	30 x 0.75	75 x 1.5	96 x 2
P	3	3	3	3	—	—

In-line receptacle



Shell size 1 to 6

Dimensions	Shell size					
	Contacts # 20 and # 16					
	1	2	3	4	5	6
A	42	42	43	44	103	103
B	16	16	16	16	33	33
C	26	29.5	34.5	39.5	89	110
D	22	25	30	34.5	72	93
E	24	27.5	33	37.5	74	96
F	19	19	20	21	46	46
G	10	10	12.5	12.5	31	31
H	24	27	32	36	80	101
M	16.8 x 0.5	20 x 0.75	25.5 x 0.75	30 x 0.75	74 x 1.5	96 x 2
P	3	3	3	3	—	—