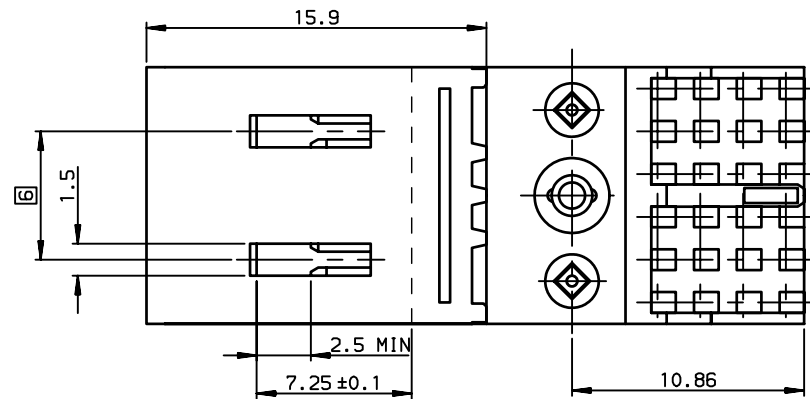
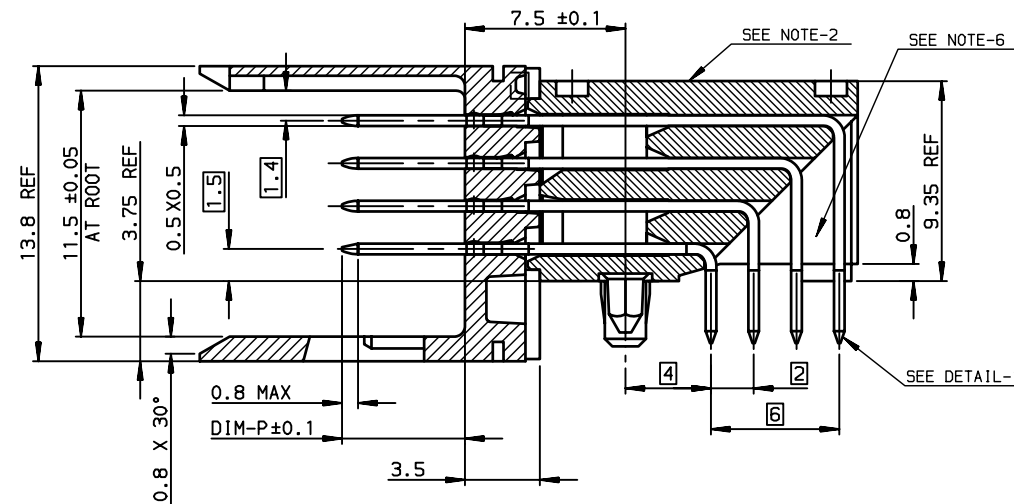


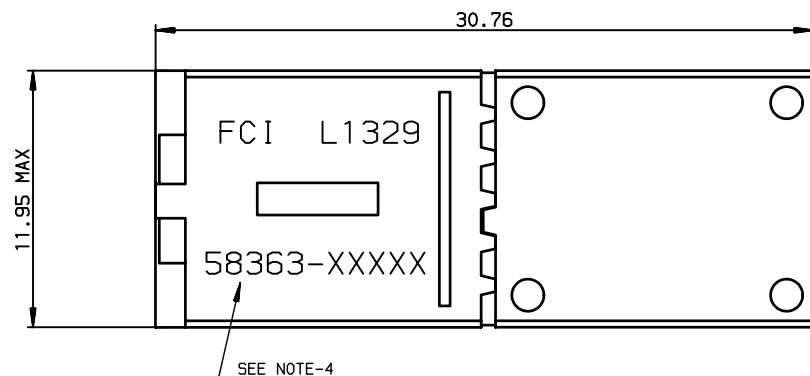
A



B

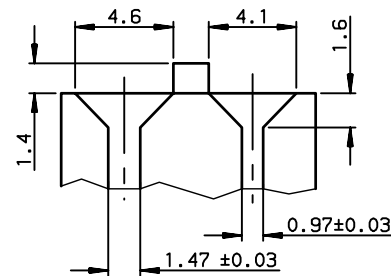


C



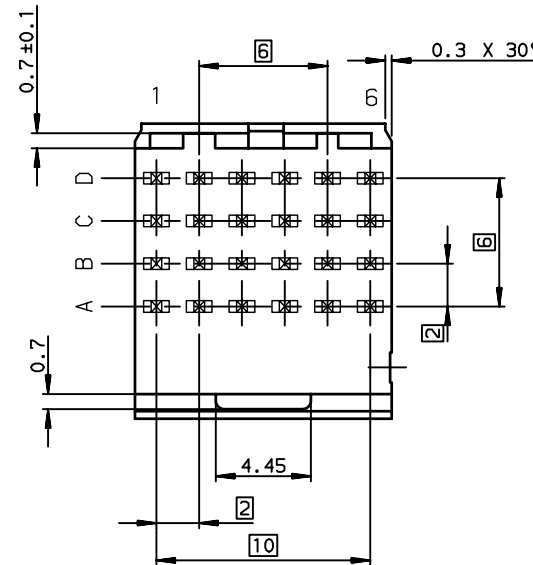
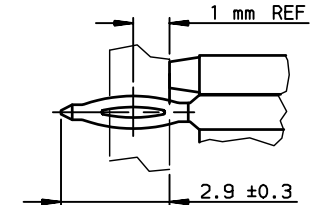
D

DETAIL-3: MATING SLOTS



- NOTE-1: GENERAL CHARACTERISTICS ACCORDING TO GS-12-445
 NOTE-2: FLAT ROCK TOOL FOR PCB INSERTION
 NOTE-3: EYE OF THE NEEDLE PRESS-FIT TYPE
 NOTE-4: PRODUCT MARKING = PRODUCT PART NUMBER + FCI+ DATE CODE
 NOTE-5: PLATING ON MATING PART : SEE PROD. SPEC GS-12-445
 NOTE-6: CENTRAL WALL WITH END REAR SUPPORT
 NOTE-7: STANDARD PACKAGING IS TUBE ,BUT IF SUFFIX "P" IS ADDED IN P/N,PACKAGING IS IN TRAYS,MARKING IS WITHOUT "P"
 Example:58363-1xxPLF ,marking 58363-1xxLF

DETAIL-1: PRESS-FIT TAIL

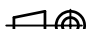




GENERAL CHARACTERISTICS AND ROHS INFORMATIONS:

SEE PRODUCT SPECIFICATION : GS-12-445

OTHERS INFORMATIONS,SEE DRW 58363-2

European Views

www.fciconnect.com			surface ISO 1302		tolerance std ISO 406 ISO 1101		projection 		mm 	
			TOLERANCES UNLESS OTHERWISE SPECIFIED							
Dr	CHAMPION	2003/07/15	ANGULAR	LINEAR	0.X		± 0.1		size A3	Scale 4
Eng	LENOIR	2003/07/15			0.XX		± 0.1			
Chr	LEGARE	2003/07/15			0.XXX		± 0.1			
Appr	LEGARE	2003/07/15	0.XX' ± 2°						ECN LS07-0134	
			Product family				METRAL		Spec ref -	
			title METRAL RA HDR PFIT CONV.				dwg no 58363-1		Rev. D	
			NB 4X6 - PUSH PEG							
			catalog no				CUSTOMER		sheet 1 of 2	

rev	ecn no	dr	date
A	-	CHA	2003/07/15
B	LS05-0056	MLE	2005/06/13
C	LS06-0114	LGO	2006/08/10
D	LS07-0134	MLE	2006/05/11
-	-	-	-
-	-	-	-
-	-	-	-



title

NB 4X6 - PUSH PEG

catalog no

dwg no

58363-1

Rev.

D

A

B

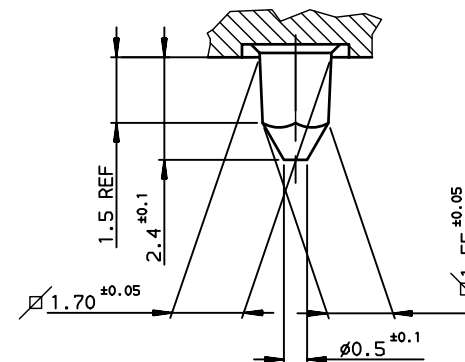
C

D

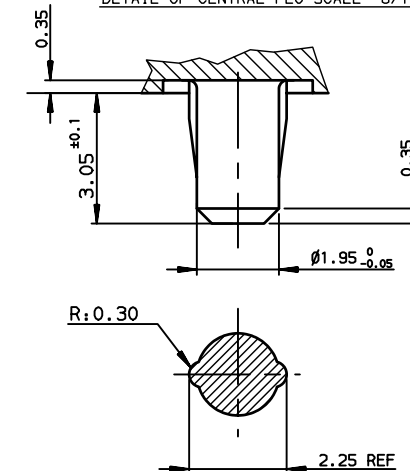
PART NUMBER / CONTACT LOADING

DIM-P ± 0.10					TIN LEAD PART NUMBER	LEAD-FREE PART NUMBER
ROW-A	ROW-B	ROW-C	ROW-D			
5.00	5.00	5.00	5.00		58363-X01	58363-X01LF
5.00	5.75	5.00	5.00		58363-X02	58363-X02LF
5.00	5.75	6.50	5.00		58363-X03	58363-X03LF
5.00	5.00	6.50	5.00		58363-X04	58363-X04LF
5.75	5.75	5.75	5.75		58363-X05	58363-X05LF
6.50	5.75	5.00	5.75		58363-X06	58363-X06LF
6.50	6.50	6.50	5.75		58363-X07	58363-X07LF
6.50	5.75	6.50	5.75		58363-X08	58363-X08LF
6.50	5.00	5.00	5.00		58363-X09	58363-X09LF

DETAIL OF LOCATING PEGS (2x) SCALE 8/1

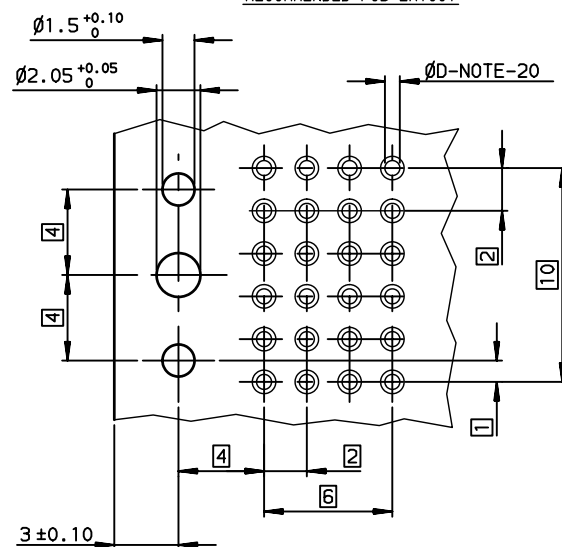


DETAIL OF CENTRAL PEG SCALE 8/1



PART NUMBER	PERFORMANCE LEVEL
58363-1yy (LF)	STANDARD P/N, See Prod. Spec 6S-12-445
58363-3yy (LF) / Xyy (LF)	Customer Special, Specific Plating

RECOMMENDED PCB LAYOUT






NOTE-20: PTH DIMENSIONS - ϕD
 - DRILL DIAMETER = (0.85 REF) and Plating
 See Product Spec : 6S-12-445

OTHERS INFORMATIONS, SEE DRW 58363-1

European Views

rev	ecn no	dr	date
A	-	CHA	2003/07/15
B	LS05-0056	MLE	2005/06/13
C	LS06-0114	LGO	2006/08/10
D	LS07-0134	MLE	2007/05/11
-	-	-	-
-	-	-	-
-	-	-	-

www.fciconnect.com			surface ISO 1302		tolerance std ISO 406 ISO 1101		projection 		mm 		
			TOLERANCES UNLESS OTHERWISE SPECIFIED								
Dr	CHAMPION	2003/07/15	ANGULAR	LINEAR	0.X	±0.1	size A3	Scale 4			
Eng	LENOIR	2003/07/15			0.XX	±0.1					
Chr	LEGARE	2003/07/15			0.XXX	±0.1					
Appr	LEGARE	2003/07/15	0.XX' ±2'				ECN		LS07-0134		
			Product family				METRAL		Spec ref -		
			title METRAL RA HDR PFIT CONV				dwg no 58363-2			Rev. D	
			NB 4X6 - PUSH PEG								
			catalog no -				CUSTOMER			sheet 2 of 2	