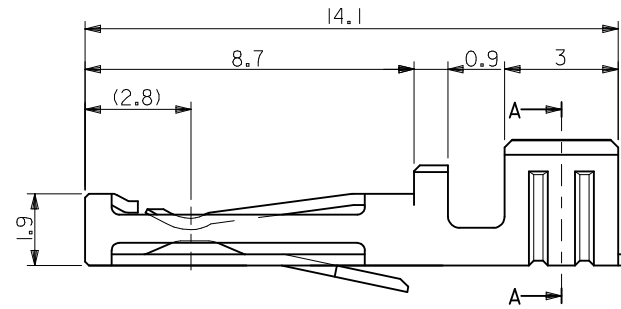
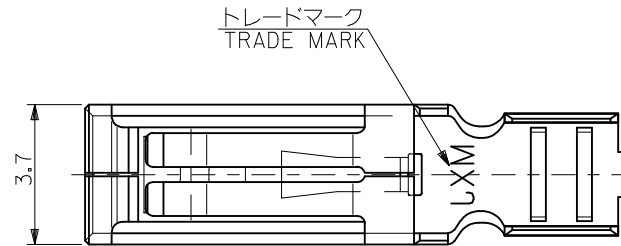
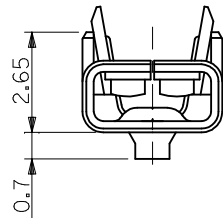
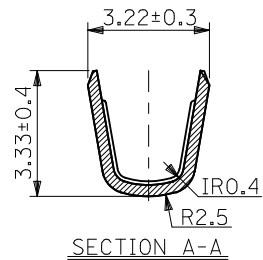


注記
NOTES

1. 材質
MATERIAL
銅合金 (板厚: 0.3)
COPPER ALLOY (THICKNESS : 0.3)
2. メッキ仕様
TERMINAL PLATING
接点部 : 金メッキ 0.25 μm MIN.
CONTACT AREA : GOLD 0.25 μm MIN.
圧着部 : 錫メッキ 1.0 μm MIN.
CRIMP AREA : TIN 1.0 μm MIN.
下地メッキ : ニッケルメッキ 1.27 μm MIN.
UNDER PLATE : NICKEL 1.27 μm MIN.
3. 適用電線範囲 : UL 1015 , AWG #18~14
APPLICABLE WIRE RANGE : UL 1015 , AWG #18~14
4. 被覆外径 : φ3.8 MAX.
INSULATION EXTERNAL DIA : φ3.8 MAX.
5. 適用ハウジング : 51300-**** , 51301-****
APPLICABLE HOUSING : 51300-**** , 51301-****
6. 適用圧着工具 (手動) : 57413-5300 (適用電線 : AWG #16~14)
APPLICABLE CRIMP TOOL (HAND) : 57413-5300 (APPLICABLE WIRE AWG #16~14)
: 57413-5400 (適用電線 : AWG #18)
: 57413-5400 (APPLICABLE WIRE AWG #18)
7. 本製品は 56194-9185 の鉛フリー品である。
THIS PRODUCT IS LEAD FREE OF 56194-9185.



①	CHAIN	56194-9028	56194-9***
	バラ状 LOOSE	56194-9128	
	端子形状 TERMINAL CONFIGURATION	MATERIAL No.	MODEL No.

RELEASED EC NO: WNA2010-0098 DRWN: TMOELLER 2009/08/11 CHKD: MURPHY APPR: JFURPHY 2009/08/14	GENERAL TOLERANCES (UNLESS SPECIFIED)		DIMENSION STYLE MM ONLY		SCALE 1:1	DESIGN UNITS METRIC	THIRD ANGLE PROJECTION	
	10 UNDER	±0.2	DRAWN BY M. NABEI	DATE '07/10/30	COMPACT ROBOT CONN. POWER CRIMP SOCKET -LEAD FREE- MOLEX INCORPORATED SD-56194-003			
	10 OVER 30 UNDER	±0.25	CHECKED BY M. ISOGAYA	DATE '07/10/30				
	30 OVER	±0.3	APPROVED BY N. UKITA	DATE '07/10/30				
ANGULAR ±3 °		MATERIAL NO.	DOCUMENT NO.					
DRAFT WHERE APPLICABLE MUST REMAIN WITHIN DIMENSIONS		SEE TABLE		SHEET NO. 1 OF 1				
A	THIS DRAWING CONTAINS INFORMATION THAT IS PROPRIETARY TO MOLEX INCORPORATED AND SHOULD NOT BE USED WITHOUT WRITTEN PERMISSION							