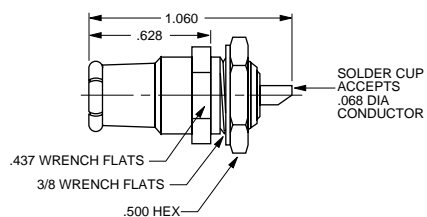


PUSH-ON COAX 120 SERIES

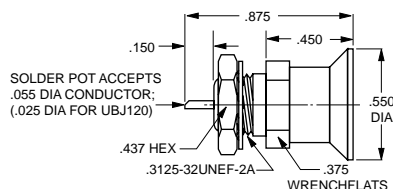
These BNC/TNC push-on jacks and plugs are designed for (U)PL123 blind mate rack and panel applications. The male plugs mate (U)PL122 with any BNC/TNC jack and are ideally suited for test/cable applications.

PL121 Shown



PANEL PLUG	50Ω	PL121
FRONT MOUNT, SOLDER POT	75Ω	UPL121
W/ SOLDER LUG	50Ω	PL121SL
	75Ω	UPL121SL

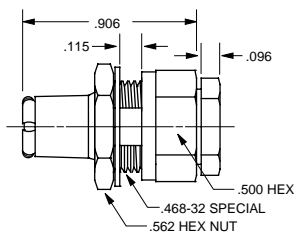
Mounting Hole: C2.093



BULKHEAD JACK	50Ω	BJ120
FRONT MOUNT, SOLDER LUG	75Ω	UBJ120
W/ SOLDER LUG	50Ω	BJ120SL
	75Ω	UBJ120SL

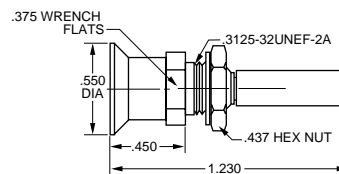
Mounting Hole: C1.120

PL122 Shown



PANEL PLUG	50Ω	PL122-
REAR MOUNT, CABLE ENTRY	75Ω	UPL122-

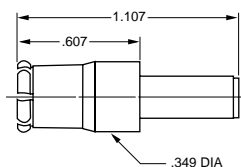
Mounting Hole: DD5.187



BULKHEAD CABLE JACK	50Ω	BJ120C-
FRONT MOUNT, TOOL CRIMP	75Ω	UBJ120C-

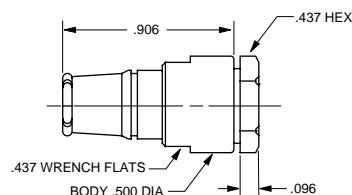
Limited Cable Groups
Mounting Hole: C1.120

PL223-.001 Shown



CABLE PLUG	50Ω	PL223-
TOOL CRIMP	75Ω	UPL223-

PL123-2 Shown



CABLE PLUG	50Ω	PL123-
WRENCH CRIMP	75Ω	UPL123-

- Refers to Cable Group Table, see pages 68-88 "D" mounting holes are on page 45.