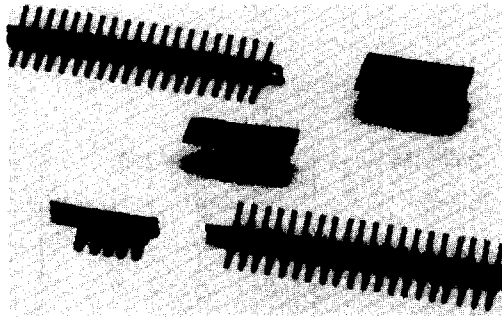
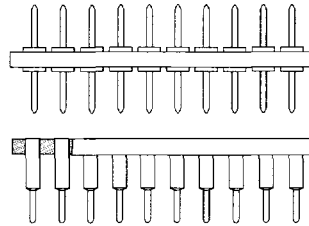


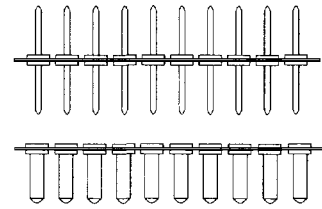
.050" (1.27mm) Pitch Board to Board Interconnections



Molded Adapter & Socket



Peel-A-Way® Adapter & Socket



Features:

- Sockets and adapters are designed in mating pairs.
- .050" (1.27mm) and .100" (2.54mm) centers spacing row to row.
- High reliability screw machine terminals with closed end construction for 100% anti-wicking of solder.
- For surface mount board to board options consult factory.

Terminals and Contacts:

Terminal: Brass - Copper Alloy 360, ASTM-B-16

Contact: Beryllium Copper - Copper Alloy 172, ASTM-B-194

Plating:

Terminal: Gold over Nickel or Tin-Lead over Nickel

Contact: Gold over Nickel or Tin-Lead over Nickel

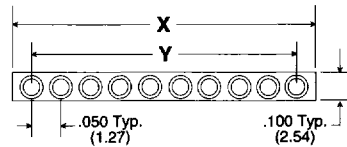
Body Material:

Molded - Glass Filled Thermoplastic Polyester (P.B.T.), U.L. Rated 94V-O, -60°C to 140°C (-76°F to 284°F)

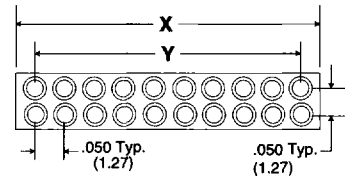
High Temp. Molded - High temp. glass filled thermoplastic, U.L. Rated 94V-O, -60°C to 260°C (-76°F to 500°F)

Peel-A-Way® - Polyimide Film, Temp. range -269°C to 400°C (-452°F to 752°F)

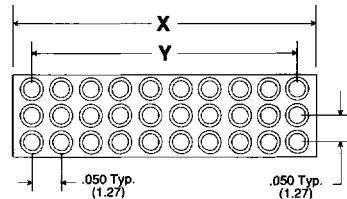
Single Row
SDA, NBA, KBA - Male / SDS, KBS - Female



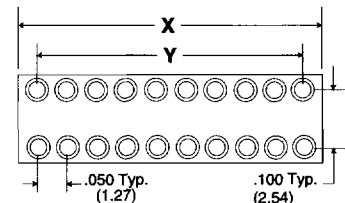
Dual Row
.050" (1.27mm) Spacing Row to Row
KNA, DDA - Male / DDS, KNS - Female



Triple Row
KTA - Male / KTS - Female



Dual Row
.100" (2.54mm) Spacing Row to Row
DAD, KDA - Male / DD, KDD - Female



Molded

# of Pins Per Row	X	Y
10	.550 (13.97)	.450 (11.43)
20	1.050 (26.67)	.950 (24.13)
30	1.550 (39.37)	1.450 (36.83)
40	2.050 (52.07)	1.950 (49.53)
50	2.550 (64.77)	2.450 (62.23)

Peel-A-Way®

# of Pins Per Row	X	Y
10	.650 (16.51)	.450 (11.43)
20	1.150 (29.21)	.950 (24.13)
30	1.650 (41.91)	1.450 (36.83)
40	2.150 (54.61)	1.950 (49.53)
50	2.650 (67.31)	2.450 (62.23)

How To Order - Male

KBA **010** **-131** **T**

Body Type
NBA/HNBA - Single Row Molded
KBA - Single Row Peel-A-Way®
KNA - Dual Row Peel-A-Way®
KTA - Triple Row Peel-A-Way®
DDA - Dual Row Molded
***DAD** - Dual Row Molded
 (.100/(2.54) Pitch Between Rows)
***KDA** - Dual Row Peel-A-Way®
 (.100/(2.54) Pitch Between Rows)

Terminal Plating
 G - Gold
 T - Tin-Lead

Terminal Type

Number of Pins
 10,20,30,40 & 50 positions per row standard. For other lengths consult factory.

How To Order - Female

KBS **010** **-227** **T** **G**

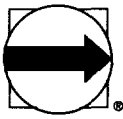
Body Type
SDS/HSDS - Single Row Molded
KBS - Single Row Peel-A-Way®
DDS/HDDS - Dual Row Molded
KNS - Dual Row Peel-A-Way®
KTS - Triple Row Peel-A-Way®
***DD** - Dual Row Molded
 (.100/(2.54) Pitch Between Rows)
***KDD** - Dual Row Peel-A-Way®
 (.100/(2.54) Pitch Between Rows)

Contact Plating
 G - Gold T - Tin-Lead

Terminal Plating
 G - Gold T - Tin-Lead

Terminal Type

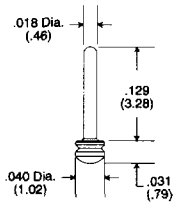
Number of Pins
 10,20,30,40 & 50 positions per row standard. For other lengths consult factory.



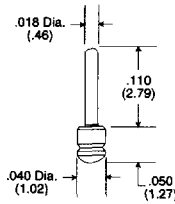
.050" (1.27mm) Pitch Board to Board Interconnections

Male Terminal Information

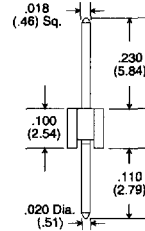
**Surface Mount
Type -525**
Peel-A-Way® Only



**Surface Mount
Type -526**
Peel-A-Way® Only

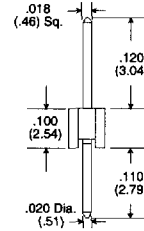


**Thru Hole
Type -252****
Molded Only



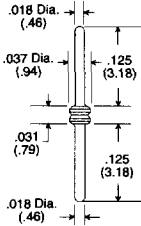
** For mating socket consult factory.

**Thru Hole
Type -253****
Molded Only

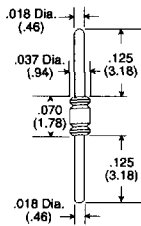


** For mating socket consult factory.

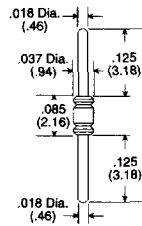
**Thru Hole
Type -131**
Peel-A-Way® Only



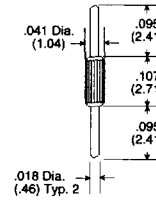
**Thru Hole
Type -321**
Peel-A-Way® Only



**Thru Hole
Type -322**
Peel-A-Way® Only

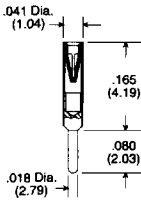


**Thru Hole
Type -233**
Molded Only

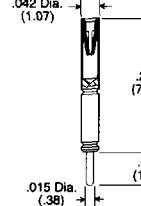


Female Terminal Information

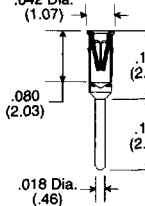
**Thru Hole
Type -168**
Molded Only



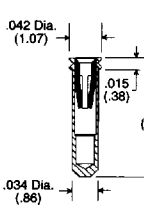
**Thru Hole
Type -205**
Molded Only



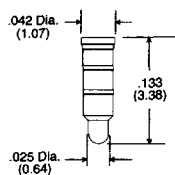
**Thru Hole
Type -347**
Molded Only



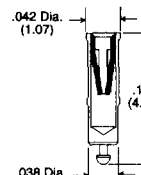
**Thru Hole
Type -227**
Peel-A-Way® Only



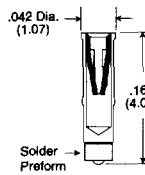
**Surface Mount
Type -551**
Molded Only



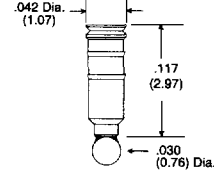
**Surface Mount
Type -553**
Molded Only



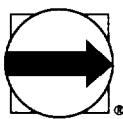
**Surface Mount
Type -565***
Molded Only



**Surface Mount
Type -636***
Molded Only - Patent Pending



Additional terminal types available. See terminal section for detailed terminal information.



.050" (1.27mm) Pitch Board to Board Interconnections

Thru Hole Male & Female

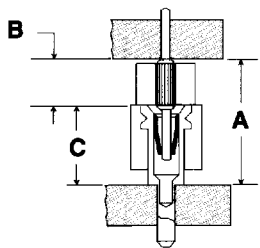


Figure 1
Molded Male & Female

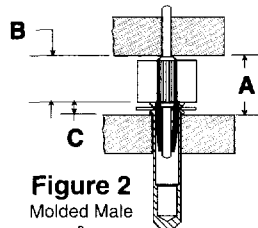


Figure 2
Molded Male &
Peel-A-Way® Female

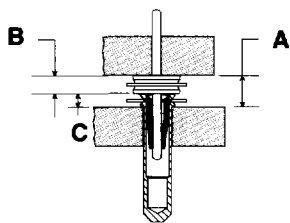


Figure 3
Peel-A-Way® Male & Female

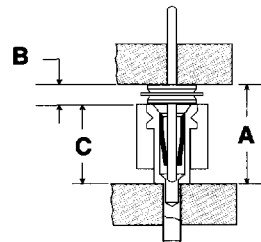


Figure 4
Peel-A-Way® Male & Molded Female

Thru Hole Male & Surface Mount Female

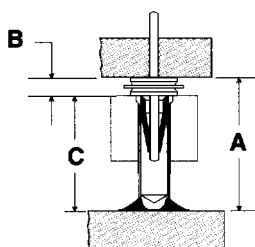


Figure 5
Peel-A-Way® Male & Molded Female

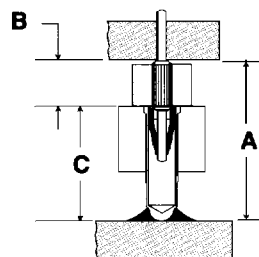


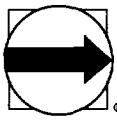
Figure 6
Molded Male & Female

Order One Each Male & Female To Get the Required "A" Dim.

B	C	A	Male Part #	Female Part #	Fig. #
.031 (.79)	.015 (.38)	.046 (1.17)	KBA020-131G	KBS020-227TG	3
.070 (1.78)	.015 (.38)	.085 (2.16)	KBA020-321G	KBS020-227TG	3
.085 (2.16)	.015 (.38)	.100 (2.54)	KBA020-322G	KBS020-227TG	3
.107 (2.71)	.015 (.38)	.122 (3.09)	NBA020-233G	KBS020-227TG	2
.031 (.79)	.112 (2.84)	.143 (3.63)	KBA020-131G	SDS020-557TG	4
.031 (.79)	.118 (3.00)	.149 (3.79)	KBA020-131G	SDS020-551TG	5
.070 (1.78)	.112 (2.84)	.182 (4.62)	KBA020-321G	SDS020-557TG	4
.070 (1.78)	.118 (3.00)	.188 (4.78)	KBA020-321G	SDS020-551TG	5
.031 (.79)	.161 (4.09)	.192 (4.88)	KBA020-131G	SDS020-553TG	5
.031 (.79)	.165 (4.19)	.196 (4.98)	KBA020-131G	SDS020-168TG	4
.085 (2.16)	.112 (2.84)	.197 (5.00)	KBA020-322G	SDS020-557TG	4
.085 (2.16)	.118 (3.00)	.203 (5.16)	KBA020-322G	SDS020-551TG	5
.107 (2.71)	.112 (2.84)	.219 (5.55)	SDA020-233G	SDS020-557TG	1
.107 (2.71)	.118 (3.00)	.225 (5.71)	NBA020-233G	SDS020-551TG	6
.070 (1.78)	.161 (4.09)	.231 (5.87)	KBA020-321G	SDS020-553TG	5
.070 (1.78)	.165 (4.19)	.235 (5.97)	KBA020-321G	SDS020-168TG	4
.085 (2.16)	.165 (4.19)	.250 (6.35)	KBA020-322G	SDS020-168TG	4
.085 (2.16)	.161 (4.09)	.246 (6.25)	KBA020-322G	SDS020-553TG	5
.071 (2.71)	.165 (4.19)	.272 (6.91)	NBA020-233G	SDS020-168TG	1
.031 (.79)	.278 (7.06)	.309 (7.85)	KBA020-131G	SDS020-205TG	4
.070 (1.78)	.278 (7.06)	.348 (8.84)	KBA020-321G	SDS020-205TG	4
.085 (2.16)	.278 (7.06)	.363 (9.22)	KBA020-322G	SDS020-205TG	4
.107 (2.71)	.278 (7.06)	.385 (9.77)	NBA020-233G	SDS020-205TG	1

20 Position Single Row Part Numbers Shown
For Additional Ordering Information See Page 60

If required "A" dimension is not shown, consult factory.



.050" (1.27mm) Pitch Board to Board Interconnections

Surface Mount Male & Thru Hole Female

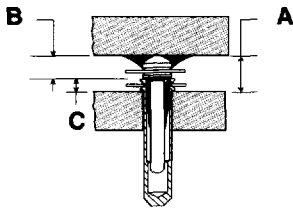


Figure 7
Peel-A-Way® Male & Female

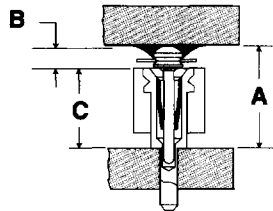


Figure 8
Peel-A-Way® Male & Molded Female

Surface Mount Male & Female

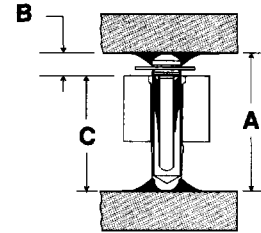
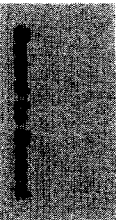


Figure 9
Peel-A-Way Male & Molded Female



Order One Each Male & Female To Get the Required "A" Dim.

B	C	A	Male Part #	Female Part #	Fig. #
.031 (.79)	.015 (.38)	.046 (1.17)	KBA020-525G	KBS020-227TG	7
.050 (1.27)	.015 (.38)	.065 (1.65)	KBA020-526G	KBS020-227TG	7
.050 (1.27)	.118 (3.00)	.168 (4.27)	KBA020-526G	SDS020-551TG	9
.031 (.79)	.161 (4.09)	.192 (4.88)	KBA020-525G	SDS020-553TG	9
.031 (.79)	.165 (4.19)	.196 (4.98)	KBA020-525G	SDS020-168TG	8
.050 (1.27)	.161 (4.09)	.211 (5.36)	KBA020-526G	SDS020-553TG	9
.050 (1.27)	.165 (4.19)	.215 (5.46)	KBA020-526G	SDS020-168TG	8
.031 (.79)	.278 (7.06)	.309 (7.85)	KBA020-525G	SDS020-205TG	8
.050 (1.27)	.278 (7.06)	.326 (8.33)	KBA020-526G	SDS020-205TG	8

20 Position Single Row Part Numbers Shown
For Additional Ordering Information See Page 60

If required "A" dimension is not shown, consult factory.