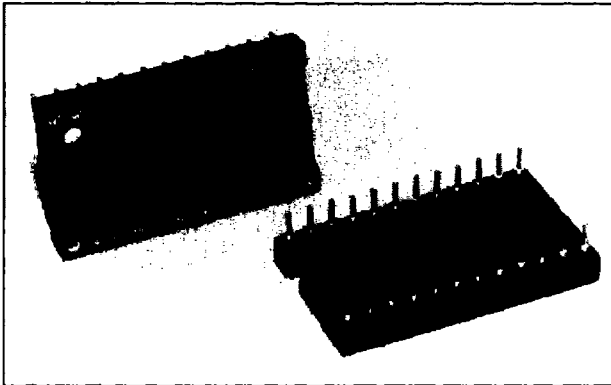


PRODUCTION DIP

Screw Machine Sockets

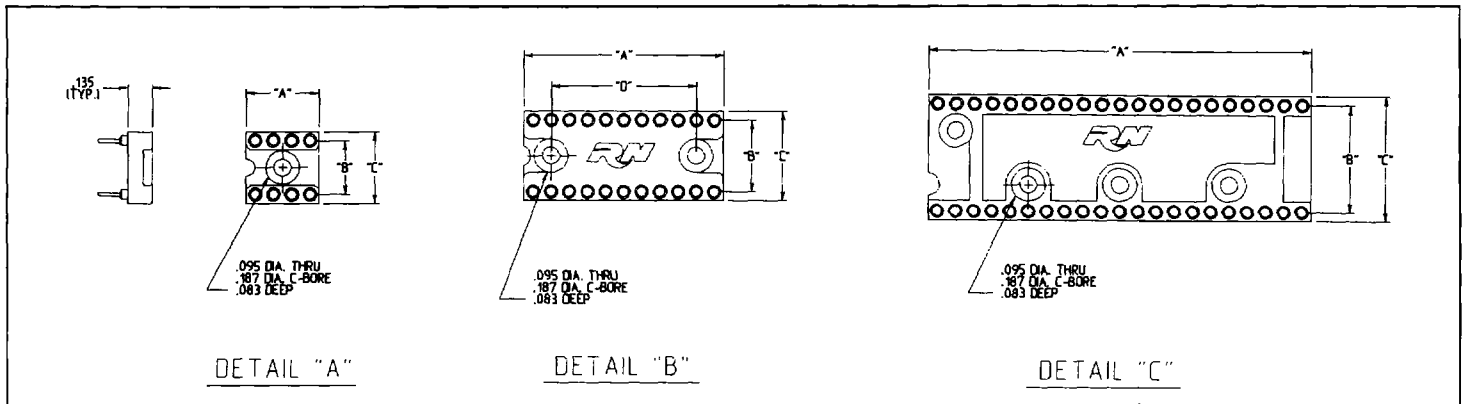


ICA Series



- Four-finger Beryllium Copper contact provides low, stable contact resistance
- High retention design prevents "IC Walk-out" during heavy vibration
- Pin socket contact prevents solder wicking and flux entrapment
- Wide variety of plating options including economical Tin plated contact and shell

SOCKETS



How To Order ICA Series

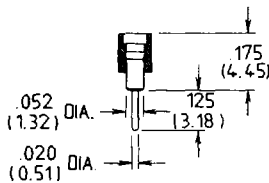
ICA — XX X — XX — X

Number of Contacts:
06 thru 48
(See Chart)

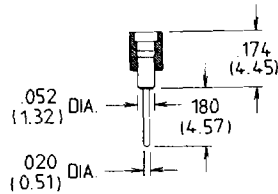
Row Spacing:
3 = .300 (7.62)
4 = .400 (10.16)
6 = .600 (15.24)
(See Chart)

Lead Style

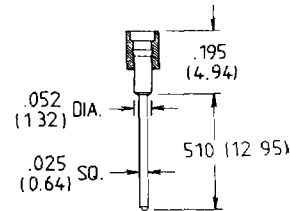
Plating Option:
Specify TG, TG30, TT



S



SL180



WB

Part Numbers

Number of Contacts	Description	Dimension A	Dimension B	Dimension C	Dimension D
6	ICA-063-X-X	.295 (7.49)	.300 (7.62)	.395 (10.03)	—
8	ICA-083-X-X	.395 (10.03)	.300 (7.62)	.395 (10.03)	—
14	ICA-143-X-X	.695 (17.65)	.300 (7.62)	.395 (10.03)	.400 (10.16)
16	ICA-163-X-X	.795 (20.19)	.300 (7.62)	.395 (10.03)	.500 (12.70)
18	ICA-183-X-X	.895 (22.73)	.300 (7.62)	.395 (10.03)	.600 (15.24)
20	ICA-203-X-X	.995 (25.27)	.300 (7.62)	.395 (10.03)	.700 (17.78)
22	ICA-224-X-X	1.095 (27.81)	.400 (10.16)	.495 (12.57)	.800 (20.32)
24	ICA-243-X-X	1.195 (30.35)	.300 (7.62)	.395 (10.03)	.900 (22.86)
24	ICA-246-X-X	1.195 (30.35)	.600 (15.24)	.695 (17.65)	—
28	ICA-286-X-X	1.395 (35.43)	.600 (15.24)	.695 (17.65)	—
32	ICA-326-X-X	1.595 (40.51)	.600 (15.24)	.695 (17.65)	—
40	ICA-406-X-X	1.995 (50.67)	.600 (15.24)	.695 (17.65)	—
42	ICA-426-X-X	2.095 (53.21)	.600 (15.24)	.695 (17.65)	—
48	ICA-486-X-X	2.395 (60.83)	.600 (15.24)	.695 (17.65)	—

Materials:

Body: Black polyester, glass-filled
Contacts: Beryllium Copper
Shell: Half Hard Brass

Acceptable Pin Sizes:

Diameter: .016" - .021" (41 - .53)
Length:
 S, SL180: .110" - .150" (2.79 - 3.81)
 WB: .110 - .165" (2.79 - 4.19)

Mounting Information:

S, SL 180: .030" ± .002" PCB Hole
 (.76 ± .05)
 WB: .040" ± .003 (1.02 ± .08)

Performance Characteristics:

Insertion Force: 12 ounces* per contact
Withdrawal Force: 1.5 ounces* per contact
 *Average of 2nd, 3rd, and 4th cycle
 using .017" diameter pin

Capacitance: 1 picofarad maximum
Insulation Resistance: 5000 megohms minimum
Dielectric Withstanding Voltage: 500 volts AC
Current Rating: 1 Ampere
Flammability: UL 94V-0
Temperature Range: -65°C to + 125°C

Plating Description:

Suffix: TT = 200 μinch (5.08 μm) minimum
 Tin/Lead on contact area.
 150 μinch (3.81 μm) minimum
 Tin/Lead on terminal area.

TG = 10 μinch (.254 μm) minimum
 Gold on contact area.
 200 μinch (5.08 μm) minimum
 Tin/Lead in terminal area.

TG30 = 30 μinch (.762 μm) minimum
 Gold on contact area.
 200 μinch (5.08 μm) minimum
 Tin/Lead on contact area.

All options include: 50 μinch (1.27 μm)
 minimum Nickel underplate.