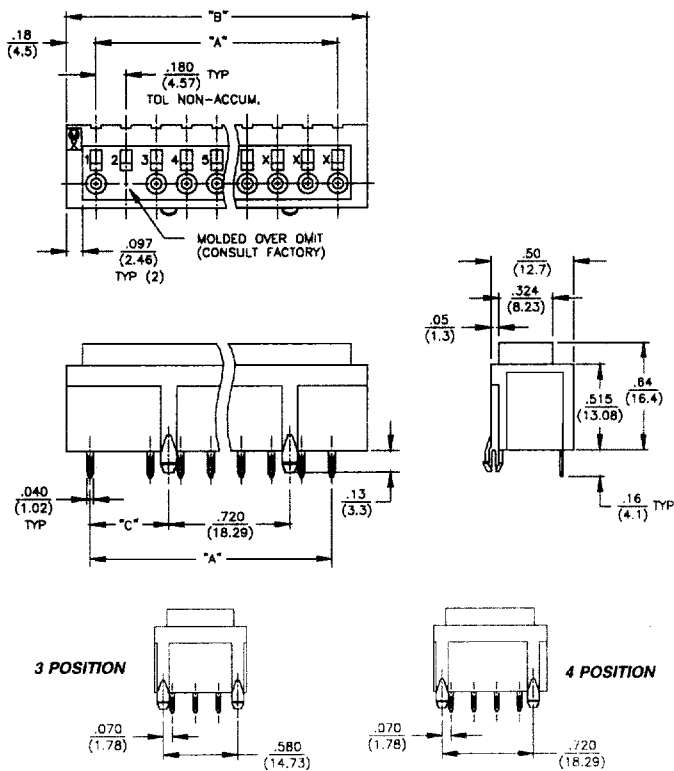
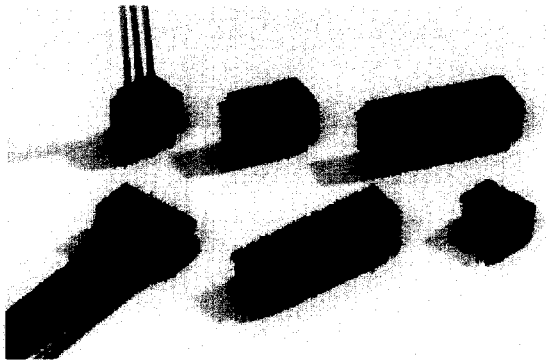




.180" Wire Trap Connector

Vertical Type



P/N Legend

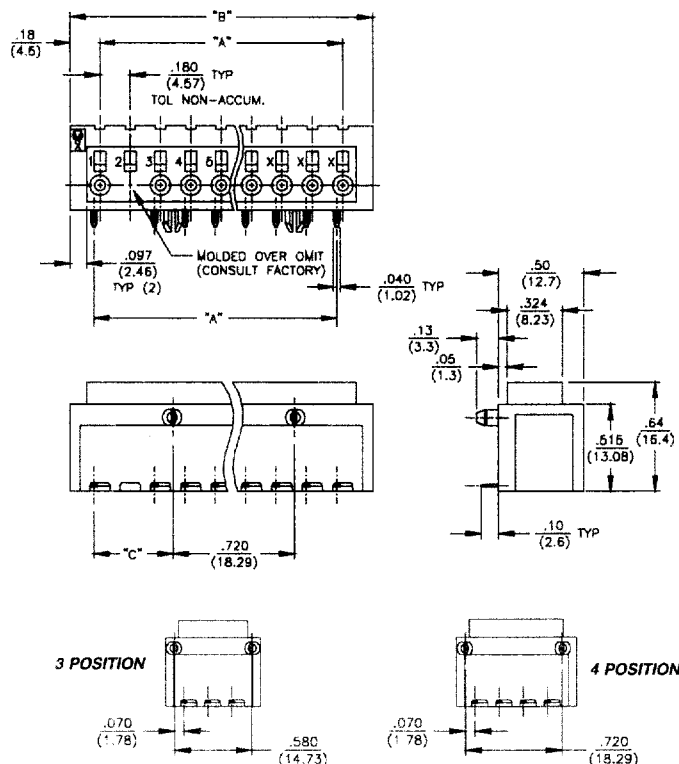
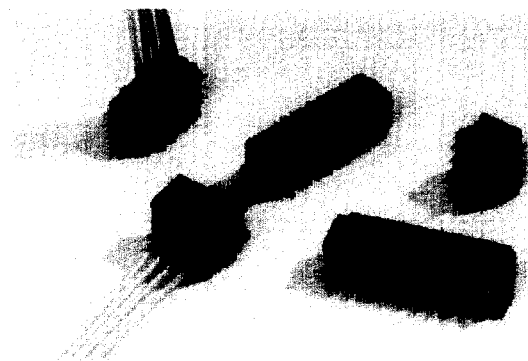
BA - 2634 - XXX - X

- OMIT POSITION #(S)
- CONSULT FACTORY
- NUMBER OF POSITIONS
- INSULATOR COLOR; PEG OPTION
- 0 = WHITE WITH PEGS
- 1 = BLACK WITH PEGS
- 2 = WHITE WITHOUT PEGS
- 3 = BLACK WITHOUT PEGS

ALL DIMENSIONS ARE IN INCHES
DIMENSIONS IN () ARE IN MILLIMETERS

PART NUMBER	NO. POS.	"A"	"B"	"C"
BA-2634-X03	3	.360 (9.14)	.714 (18.14)	SEE FIGURE
BA-2634-X04	4	.540 (13.72)	.894 (22.71)	SEE FIGURE
BA-2634-X05	5	.720 (18.29)	1.074 (27.28)	.110 (2.79)
BA-2634-X06	6	.900 (22.86)	1.254 (31.85)	.110 (2.79)
BA-2634-X07	7	1.080 (27.43)	1.434 (36.42)	.290 (7.37)
BA-2634-X08	8	1.260 (32.00)	1.614 (41.00)	.290 (7.37)
BA-2634-X09	9	1.440 (36.58)	1.794 (45.57)	.470 (11.94)
BA-2634-X10	10	1.620 (41.15)	1.974 (50.14)	.470 (11.94)

Right Angle Type



P/N Legend

BA - 2675 - XXX - X

- OMIT POSITION #(S)
- CONSULT FACTORY
- NUMBER OF POSITIONS
- INSULATOR COLOR; PEG OPTION
- 0 = WHITE WITH PEGS
- 1 = BLACK WITH PEGS
- 2 = WHITE WITHOUT PEGS
- 3 = BLACK WITHOUT PEGS

ALL DIMENSIONS ARE IN INCHES
DIMENSIONS IN () ARE IN MILLIMETERS

PART NUMBER	NO. POS.	"A"	"B"	"C"
BA-2675-X03	3	.360 (9.14)	.714 (18.14)	SEE FIGURE
BA-2675-X04	4	.540 (13.72)	.894 (22.71)	SEE FIGURE
BA-2675-X05	5	.720 (18.29)	1.074 (27.28)	.110 (2.79)
BA-2675-X06	6	.900 (22.86)	1.254 (31.85)	.110 (2.79)
BA-2675-X07	7	1.080 (27.43)	1.434 (36.42)	.290 (7.37)
BA-2675-X08	8	1.260 (32.00)	1.614 (41.00)	.290 (7.37)
BA-2675-X09	9	1.440 (36.58)	1.794 (45.57)	.470 (11.94)
BA-2675-X10	10	1.620 (41.15)	1.974 (50.14)	.470 (11.94)



.180" Wire Trap Connector

Specifications

Features & Benefits

- Product is UL Recognized. E48567, 94NK7089
- Designed for open board or case covered assemblies
- Accommodates 16 - 20 AWG wire for design flexibility
- Vertical or right angle orientation allows easy insertion & removal of wires (No special field application tooling required)
- Available from 3 through 10 positions, with or without omits, for design versatility
- Special attributes include a contact anti-overstress feature and a separate hole for wire release and test probe access
- "Wire trap" contact design permits rapid, simplified plant or field installation

Mechanical

Wire Retention Strength: 16 AWG - 18 lbs.
 18 AWG - 15 lbs.
 20 AWG - 10 lbs.

Operating Temperature: -40°C to +105°C

Durability: 5 cycles

Electrical

Current Rating: 9 amps/contact (16 AWG)

Voltage Rating: 600 VAC

Contact Resistance: 10 milliohms max. initial

Insulation Resistance: 1000 megohms

Dielectric Withstanding Voltage:

2200 volts for 60 sec.

2600 volts for 1 sec. between adjacent terminals

Materials

Housing Material: Polyester (PBT), UL94V-0

Contact Material: Copper alloy

Contact Plating: Tin plate

Recommended PC Board Thickness: .062 ±.007

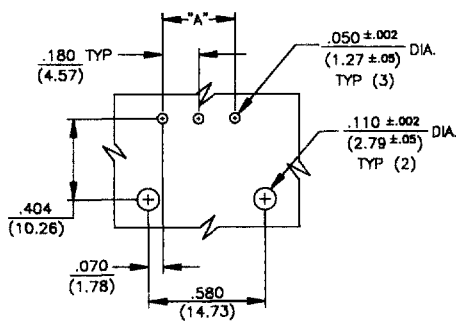
Wire Gauge: 16 and 18 AWG solid

18 and 20 AWG stranded w/tin topcoat

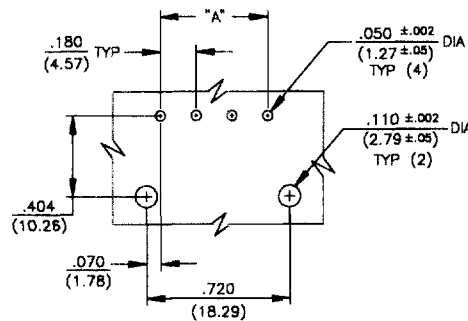
Wire Strip Length: 3/8"

Max. Conductor O.D.: .060"

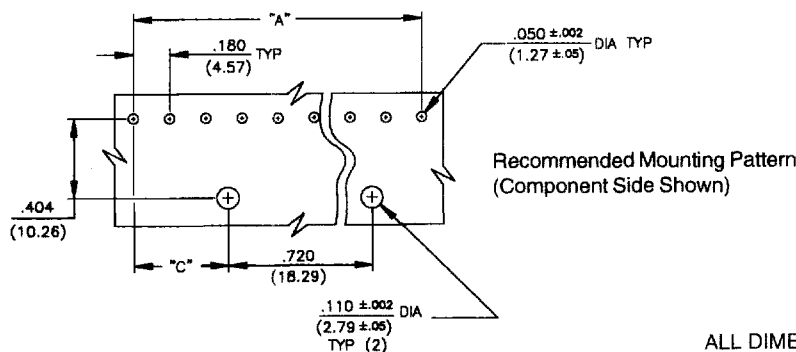
Max. Insulation O.D.: .118"



3 POSITION P.C. BOARD LAYOUT



4 POSITION P.C. BOARD LAYOUT



5 THRU 10 POSITION P.C. BOARD LAYOUT

ALL DIMENSIONS ARE IN INCHES
 DIMENSIONS IN () ARE IN MILLIMETERS