

Copyright FCI

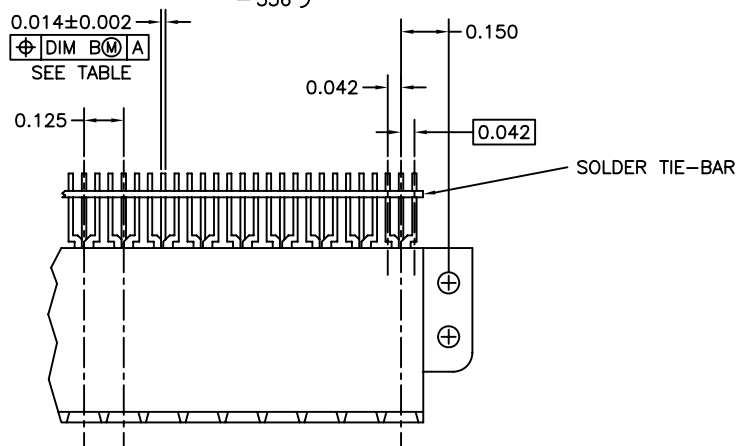
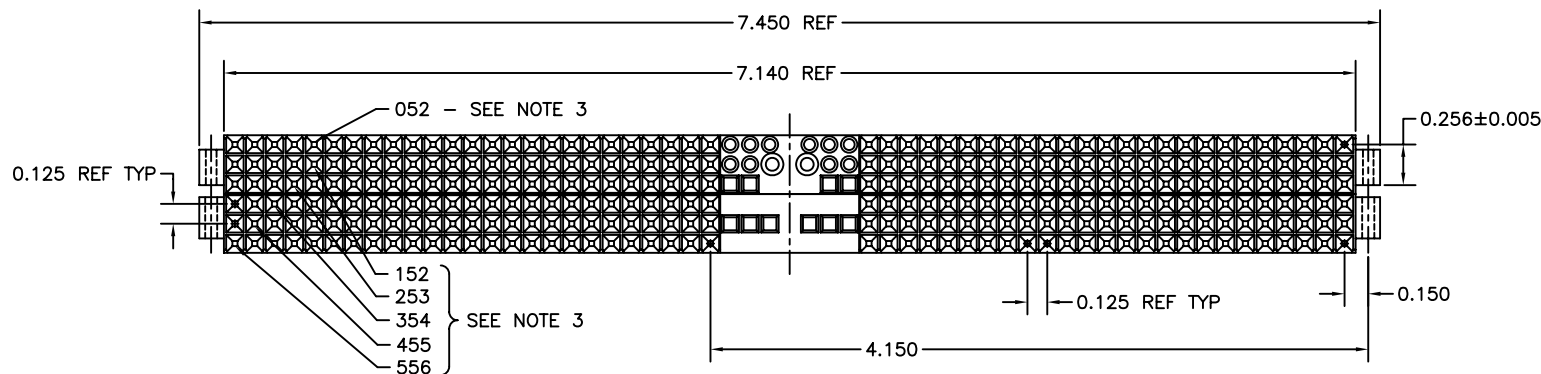
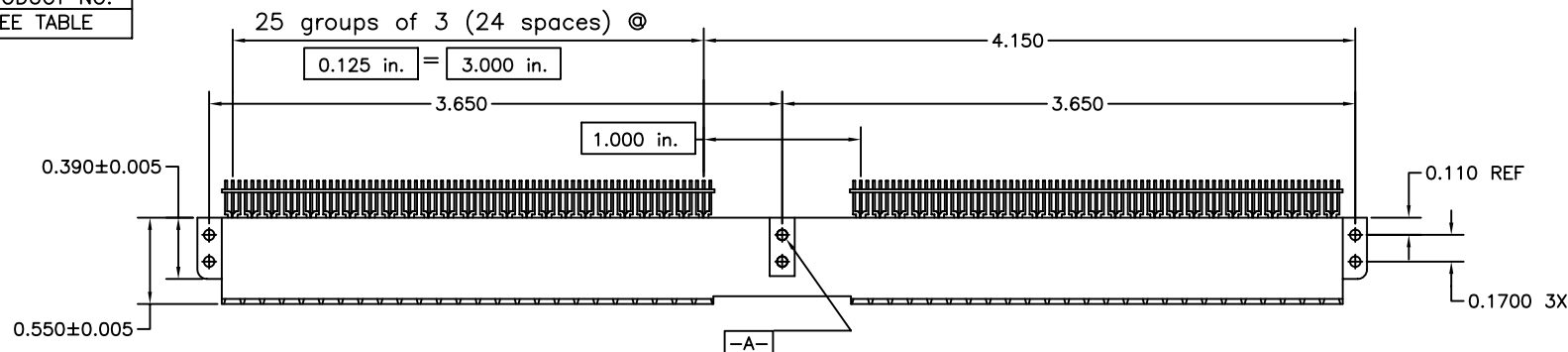


FCIconnect.com

3

4

PRODUCT NO.
SEE TABLE



| mat'l. code | | | | surface | | tolerance | | projection | product family | | |
|-------------|----------|-----|------------|------------|-----|---------------------------------------|---------------------------------------|------------|--------------------|--|--|
| NOTE 1 | | | | ASME Y14.5 | ✓ | ASME Y14.5 | ASME Y14.5 | | FASTECH | | |
| ltr | ec'n no | dr | date | angles | rel | tolerances unless otherwise specified | tolerances unless otherwise specified | INCH | title | | |
| A | V12233 | LRC | 9/14/01 | | | XX*01 | XX*01 | | 963L2-300 TYPE | | |
| B | V12458 | LSS | 10/9/01 | | | XXX*003 | XXX*003 | scale 1:1 | CONNECTOR ASSEMBLY | | |
| C | V03-0913 | LP | 8/26/03 | 0°±2' | | XXXX*0020 | XXXX*0020 | | dwg no | | |
| D | V04-0355 | TAB | 5/03/04 | dr | | R.CONRAD | 9/14/01 | | sheet 1 of 4 | | |
| E | V05-0846 | HTB | 9/1/05 | engr | | R.CONRAD | 9/14/01 | | size | | |
| F | V06-0647 | JRV | 2006-06-30 | chr | | R.CONRAD | 9/14/01 | | A82KC4083 | | |
| G | V06-0697 | HTB | 2006-08-04 | appd | | R.CONRAD | 9/14/01 | | type | | |
| sheet | revision | G | G | G | G | | | | CUSTOMER Drawing | | |
| index | sheet | 1 | 2 | 3 | 4 | | | | | | |

form: A4mmXlc

1

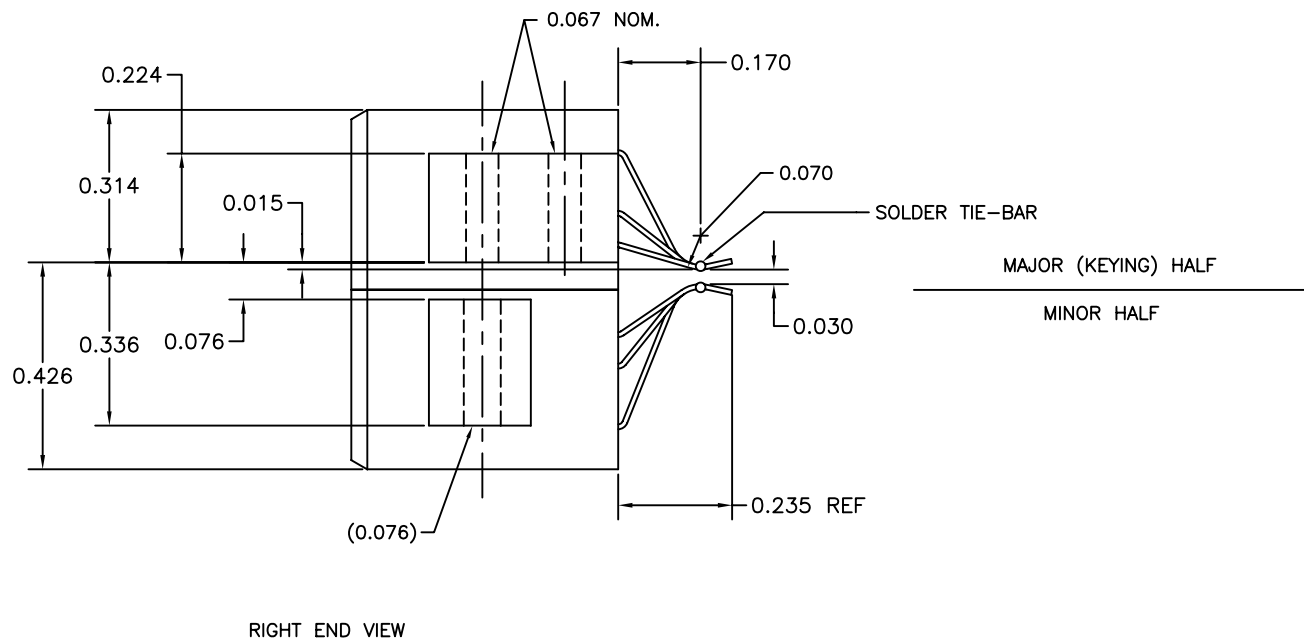
2

3

4

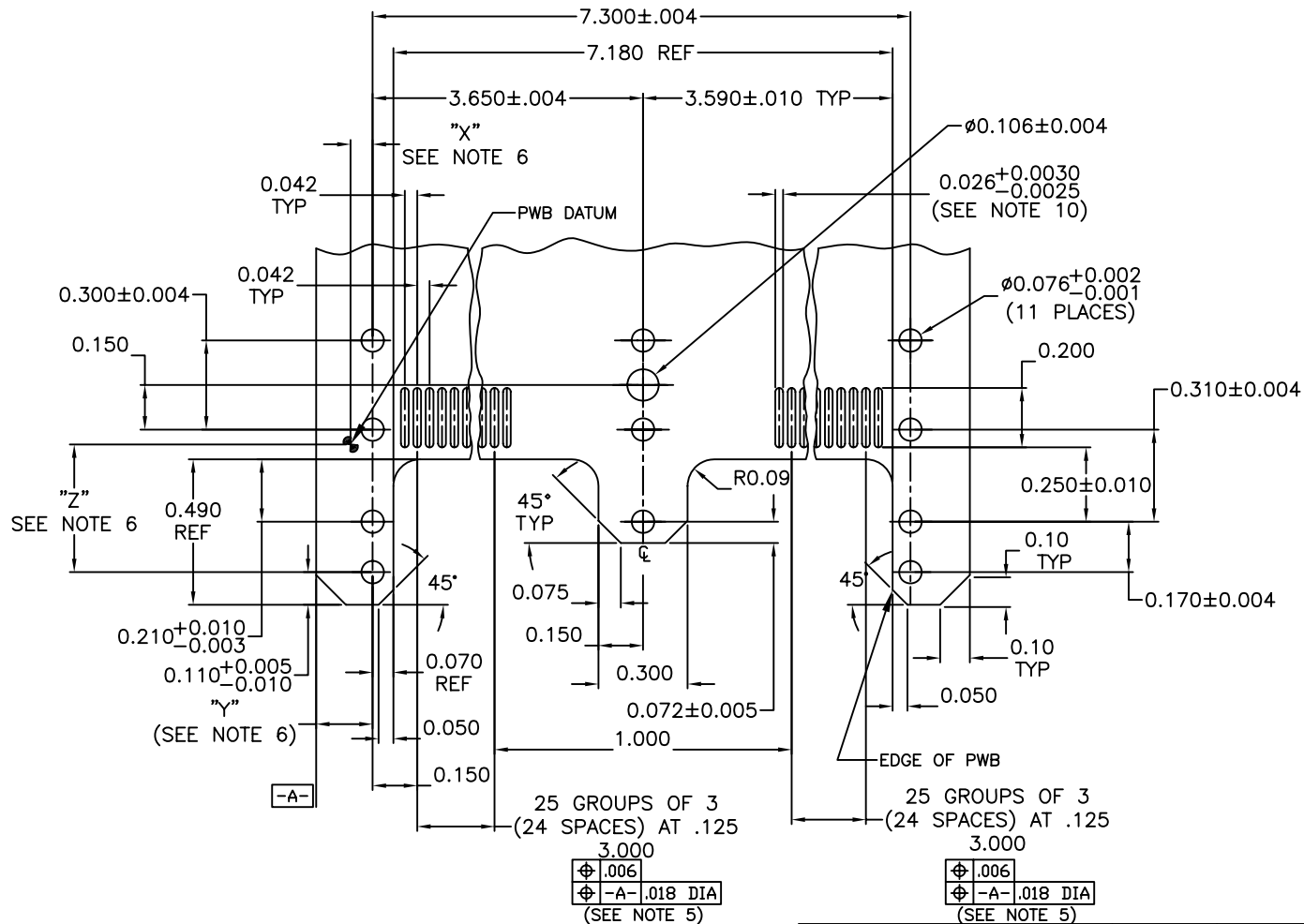


| PRODUCT NUMBER | DESCRIPTION | DIM B SOLDERTAIL LOCATION TOLERANCE |
|----------------|---|--|
| 963L2-300A-I | ALIGNED, INDIVIDUALLY PACKAGED | .016(M) |
| 963L2-300A-R | ALIGNED, PACKAGED IN RETURNABLE TRAYS | .016(M) |
| 963L2-300U | UNALIGNED | .025(M) |
| 963L2-300U-I | UNALIGNED, INDIVIDUALLY PACKAGED | .025(M) |
| 963L2-300U-R | UNALIGNED, PACKAGED IN RETURNABLE TRAYS | .025(M) |



| | | | | | | | |
|-------------|----------------|----|------|---------------------------------------|----------------------------------|--------------------|---|
| mat'l. code | | | | surface ASME Y14.5 | tolerance ASME Y14.5 | projection INCH | product family FASTECH |
| ltr | ecr no | dr | date | tolerances unless otherwise specified | | INCH | title 963L2-300 TYPE CONNECTOR ASSEMBLY |
| G | | | | angles | XX*.01 XXX*.003 XXXX*.0020 | | |
| | | | | dr | R.CONRAD 9/14/01 | scale 1:1 | dwg no |
| | | | | engr | R.CONRAD 9/14/01 | FCI | sheet 2 of 4 |
| | | | | chr | R.CONRAD 9/14/01 | | size |
| | | | | appd | R.CONRAD 9/14/01 | | A4 |
| sheet index | revision sheet | | | | | | type CUSTOMER Drawing |

PRODUCT NO.
SEE TABLE



| | | | | | | | |
|-------------|----------------|----|------|---------------------------------------|----------------------------------|------------|--------------------------------------|
| mat'l. code | | | | surface ASME Y14.5 | tolerance ASME Y14.5 | projection | product family |
| ltr | ecr no | dr | date | tolerances unless otherwise specified | | | FASTECH |
| G | | | | angles | XX*.01 XXX*.003 XXXX*.0020 | INCH | 963L2-300 TYPE CONNECTOR ASSEMBLY |
| | | | | dr | R.CONRAD 9/14/01 | scale 1:1 | dwg no |
| | | | | engr | R.CONRAD 9/14/01 | | sheet 3 of 4 |
| | | | | chr | R.CONRAD 9/14/01 | | size |
| | | | | appd | R.CONRAD 9/14/01 | | A4 |
| sheet index | revision sheet | | | | | | type |
| | | | | | | | CUSTOMER Drawing |

PRODUCT NUMBER

SEE TABLE

NOTES:

1. INSULATOR MATERIAL: PPA - 45% GLASS REINFORCED,
FLAME RETARDANT PER UL 94 V-0.
CONTACT MATERIAL: C72500 Au/Pd/Ag INLAY
TAIL: SOLDER DIPPED,
SOLDER TIE-BAR: CORED SOLDER WIRE WITH 1.4%
LOW RESIDUE FLUX.
2. THREE #1-32 X 5/16" BF+ TORX FILLISTER HEAD
SELF-THREADING SCREWS RECOMMENDED FOR ASSEMBLY
OF THE MAJOR HALF TO THE PCB.
THREE #1-32 X 5/8" BF+ TORX FILLISTER HEAD
SELF-THREADING SCREWS ARE SUPPLIED WITH THE
CONNECTOR FOR MOUNTING THE MINOR HALF
TO THE MAJOR HALF.
3. AS VIEWED FROM THE MATING FACE OF THE CONNECTOR
WITH THE CODE MARK UP, EACH CONTACT AND INSULATOR
CAVITY (EVEN IF NO CONTACT IS PRESENT) IS DESIGNATED
BY A THREE DIGIT NUMBER. THE TOP ROW IS NUMBERED
RIGHT TO LEFT FROM 000 TO 056, THE SECOND ROW FROM
100 TO 156, THE THIRD ROW FROM 200 TO 256, THE
FOURTH ROW FROM 300 TO 356, THE FIFTH ROW FROM
400 TO 456, AND THE BOTTOM ROW FROM 500 TO 556.
4. WARP ON EACH LONGITUDINAL SURFACE OF AN
ASSEMBLED CONNECTOR SHALL BE LESS THAN .008 INCH
IN FREE STATE.
5. IF A CONNECTOR IS MOUNTED ON THE COMPONENT SIDE
OF THE PWB THE SOLDER PADS SHOWN BOTTOM TO TOP
ARE ASSOCIATED WITH CONNECTOR CONTACTS 200, 300,
201, 301, 202, 302 ETC. THOSE ON THE OPPOSITE
(COMPONENT) SIDE OF THE PWB BOTTOM TO TOP WOULD
BE ASSOCIATED WITH CONNECTOR CONTACTS NUMBERED
000, 001, 101 ETC.
6. X, Y AND Z ARE CONSTANTS FIXED BY THE USER TO SUIT
HIS APPLICATION THEY ARE USED HERE ONLY TO EXPRESS
DIMENSIONAL RELATIONSHIPS.
7. ALL CONNECTOR LANDS SHALL BE COATED WITH 60-40
SOLDER PLATE PER WL-2250, 669A FIN., .0005 THICK
MIN., .002 THICK MAX. AND SHALL MEET SOLDER ABILITY
REQUIREMENT PERMS 17000 SECTION 1065.
8. THE CONNECTOR IS MECHANICALLY AND ELECTRICALLY
CONNECTED TO THE PWB PER X-18339.
9. LANDS ARE REQUIRED ON BOTH SIDES OF THE PWB.
10. THERE SHALL BE A .012 INCH MIN. CLEARANCE BETWEEN
ANY TWO LANDS.

| | | | | | | | | | | | |
|----------------|-------------------|----|------|---------------------------------------|--------------|-------------------------|--|------------|--|--------------------------------------|--|
| mat'l. code | | | | surface ASME Y14.5 | | tolerance ASME Y14.5 | | projection | | product family FASTECH | |
| ltr | ecr no | dr | date | tolerances unless otherwise specified | | INCH | | title | | 963L2-300 TYPE CONNECTOR ASSEMBLY | |
| G | | | | angles | XX*.01 | 1:1 | | dwg no | | sheet 4 of 4 | |
| | | | | 0°±2' | XXX*.003 | scale | | A82KC4083 | | size A4 | |
| | | | | dr | T. BREWBAKER | 9/1/05 | | type | | CUSTOMER Drawing | |
| | | | | engr | T. BREWBAKER | 9/1/05 | | | | | |
| | | | | chr | T. BREWBAKER | 9/1/05 | | | | | |
| | | | | appd | T. BREWBAKER | 9/1/05 | | | | | |
| sheet index | revision sheet | | | | | | | | | | |