

Part Number : SATA00120851

**SATA 7Pin Plug
SMT Mounting**

- Small and light weight
- On board SMT R/A type

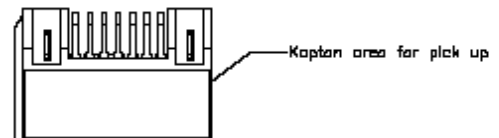
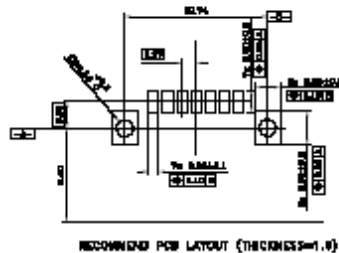
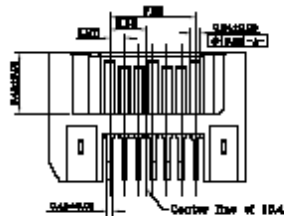
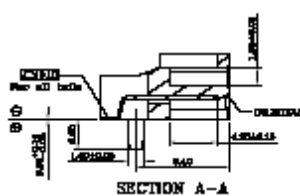
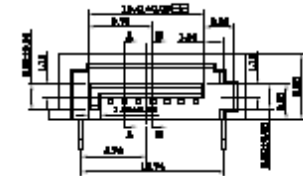
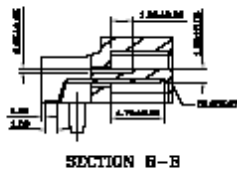
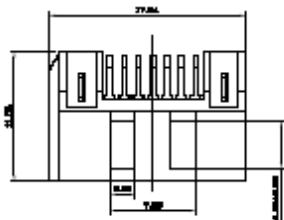
- Material:**
Contact: Copper alloy
Solder tab: Copper alloy
Insulator: High temperature thermoplastic(UL94V-0, black)
- Finish:**
Nickel plated + gold plated
- Electrical specifications:**
Voltage rating: AC 5V
Current rating: 1.5A/Per pin
Dielectric strength: 500 Vac DC for 1 minute min
Insulation resistance: 1,000 mega ohm min
Contact resistance: 30 million ohm max
Operation temperature: -25°C~+70°C
Storage temperature: -40°C~+80°C
- Mechanical specifications:**
Durability: 500 cycles
Insert force force: 45 N Max,
Withdrawal force: 4N Min after 500 cycles
- Packaging:**
Parts to be packaged in carrier tape
All packaging material to be approved by Amphenol engineering.

Customer Drawing

REVISIONS				
REV	NO	DESCRIPTION	DATE	APPROVED
3	INCORP	Final release	10/30/08	P

NOTES :

- Material:**
Plastic: high temperature thermoplastic,UL 94V-0, Colour: black
Contact: copper alloy, 0.25mm thickness
Board lock: copper alloy, 0.30mm thickness
 - Finish:**
Contact: 1.27-2.54um Ni underplated overall
Gold plated on mating area, refer to order p/n system
2.04-6.08um matte Tin plating on solder tail
Board lock: 1.27-2.54um Ni underplated overall
2.04-6.08um matte Tin plating on solder tail
 - Electrical performance:**
3.1 Current rating: signal 1.0A Min/Per, power 1.5A Min/Per
3.2 Dielectric strength: 500V for 1 minute
3.3 Insulation resistance: 1×10^4 M Ω
3.4 Contact resistance: 30m Ω MAX
3.5 Operation temperature: -40°C to +105°C
 - Order p/n system:**
SATA-001-2085-X
 - 1 - 0.76um Gold
 - 2 - 0.175um Gold
 - 3 - Gold Flash
- E. Dimensioning shall be interpreted per ASME Y14.5M 1994
 F. Material should be fulfilled Amphenol SPEC. # 9-SN-002, for halogen free products, also need to meet 9-SN-004



REV	DATE	DESCRIPTION	APPROVED
1	10/30/08	Final release	P

BALANCE ENGINEERING TOLERANCES UNLESS SPECIFIED DIMENSIONS ARE IN MILLIMETERS DECIMALS ARE IN MILLIMETERS FRACTIONS ARE IN MILLIMETERS DIMENSIONS ARE TO UNLESS OTHERWISE SPECIFIED DIMENSIONS ARE TO UNLESS OTHERWISE SPECIFIED DIMENSIONS ARE TO UNLESS OTHERWISE SPECIFIED	APPROVALS DATE CHECKED THICKNESS DATE	PARTS LIST Amphenol SATA CONNECTOR 7 PINS R/A PLUG
SCALE: 1:1 SHEET 1 OF 1	SCALE: 1:1 SHEET 1 OF 1	SCALE: 1:1 SHEET 1 OF 1