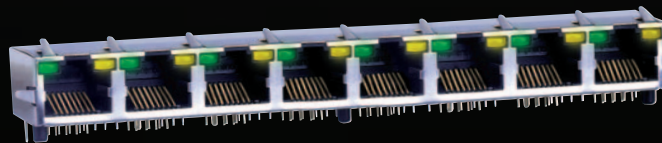


First Class Connections.

At Economy Prices.

RJ
ES

Today's competitive climate demands cost savings in every aspect of manufacturing. Amphenol Canada has responded to customer demand, by introducing the RJES series - a low-cost family of RJ45 and RJ11 Modular Jack connectors with integrated LEDs.



Reduce costs... without sacrificing quality.

Amphenol[®]

Data / Telecom Products

www.amphenolcanada.com

RJES Amphenol Canada's new family of EMI Quiet Modular Jack connectors with integrated LED's meets Cat5 Ethernet performance requirements and features the same data transfer capabilities as our existing series of LED-integrated Modular Jacks. This product is an economical solution ideal for LAN applications and is intended for use with low temperature soldering processes. Shielded and non-shielded versions are available with a variety of LED options to choose from. RJES is offered in single and multi-port configurations.



APPLICATIONS

- Ethernet
- 10 baseT LAN
- Routers
- Switches

ORDERING INFORMATION

Contact Amphenol for additional options

RJES Modular Jack

RJES - 8 3 8 0 - 0 4

MODULAR JACK WITH LEDES

STYLE

- 7 - 6 position
- 8 - 8 position

SHIELD OPTION

- 0 - Unshielded
- 3 - Shielded *
- 4 - Single port shield with top and side tabs

NUMBER OF CONTACTS

- 4 - 4 contacts
- 6 - 6 contacts
- 8 - 8 contacts

NUMBER OF PORTS

- 1 - Single port
- 2 - 2 ports
- 4 - 4 ports
- 8 - 8 ports

MODIFIER

- 0 - Standard with 6µ" [0.15µm] gold on contacts
- 1 - Standard with 15µ" [0.38µm] gold on contacts

LED DESIGNATION **

- 0 - Blocked
- 1 - LED 1 green, LED 2 yellow
- 2 - LED 1 green, LED 2 blocked
- 4 - LED 1 yellow, LED 2 green
- 5 - LED 1 and LED 2 green
- 7 - LED 1 green, LED 2 red
- A - LED 1 and LED 2 bi-color green/yellow
- B - LED 1 and LED 2 bi-color red/green

NOTES

- * Single port version has top tabs only
- ** LED 1 - Right side, LED 2 - Left side

www.amphenolcanada.com

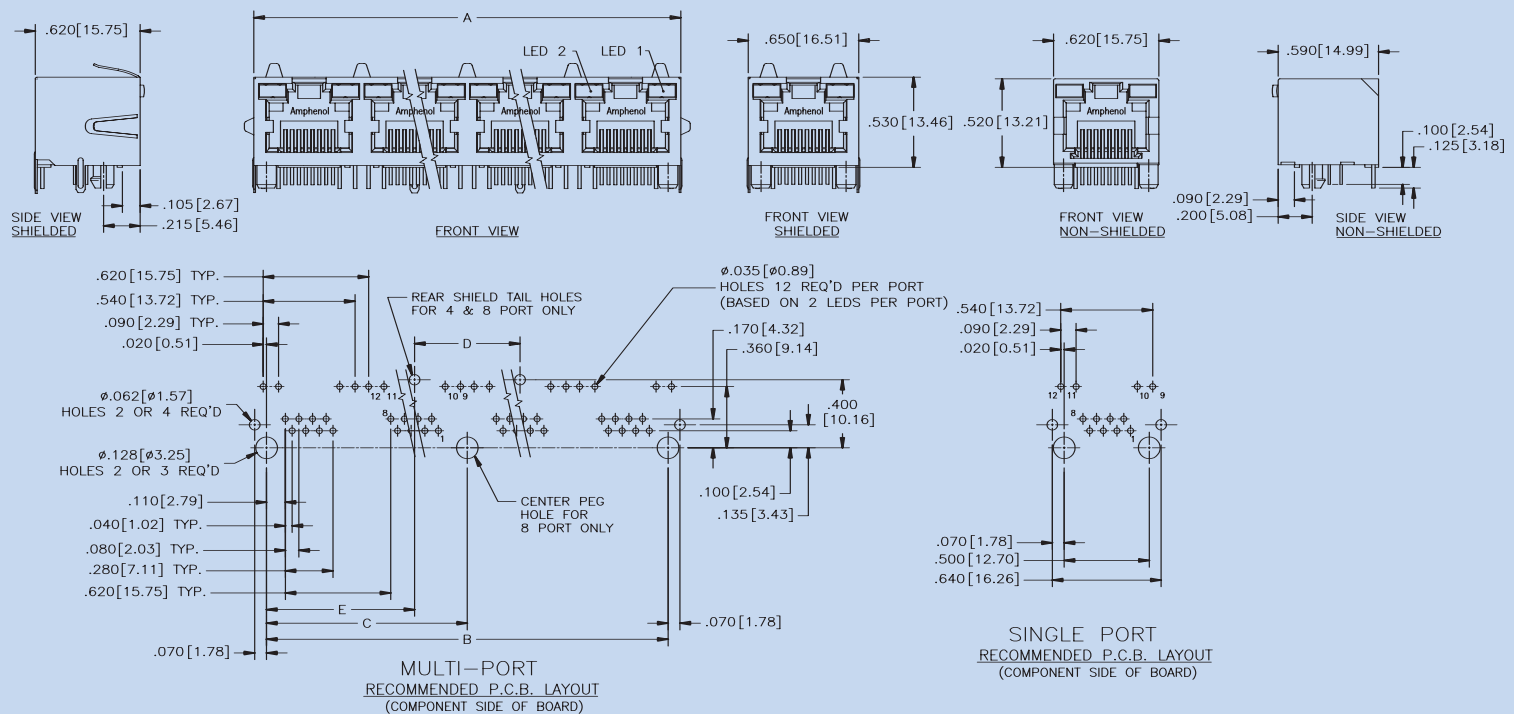
MATERIAL SPECIFICATIONS

- Plastic Housing** Thermoplastic; Flammability rating – UL94V-0
- Contacts** Phosphor bronze; 15µ” [0.38µm] or 6µ” [0.15µm] gold plating over nickel on contact mating area and tin-lead plating over nickel on PCB termination
- Shield** Copper alloy; Nickel plated
- LEDs** Epoxy lens; Tin-lead alloy over steel on termination tails

ELECTRICAL AND ENVIRONMENTAL SPECIFICATIONS

- Current Rating** 1.5 Amps maximum/contact
- Contact Resistance** 20mΩ maximum initial
- Insulation Resistance** 500MΩ minimum
- DWV** 1000 VAC
- Operating Temperature** -20°C to +75°C

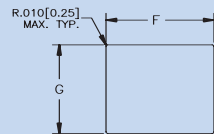
TECHNICAL SPECIFICATIONS



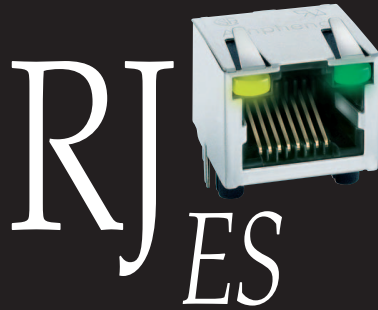
Number of ports	SHIELDED					NON-SHIELDED		
	A	B	C	D	E	A	B	C
2	1.270 [32.26]	1.120 [28.45]	N/A	N/A	N/A	1.240 [31.50]	1.120 [28.45]	N/A
4	2.510 [63.75]	2.360 [59.94]	N/A	.620 [15.75]	.870 [22.10]	2.480 [62.99]	2.360 [59.94]	N/A
8	4.990 [126.25]	4.840 [122.94]	2.420 [61.47]	.620 [15.75]	2.110 [53.59]	4.960 [125.98]	4.840 [122.94]	2.420 [61.47]

RECOMMENDED PANEL CUTOUT

Number of ports	SHIELDED		NON-SHIELDED	
	F	G	F	G
1	.665 [16.89]	.530 [13.46]	.635 [16.13]	.520 [13.21]
2	1.285 [32.64]	.530 [13.46]	1.255 [31.86]	.520 [13.21]
4	2.525 [64.14]	.530 [13.46]	2.495 [63.37]	.520 [13.21]
8	5.010 [129.5]	.530 [13.46]	4.975 [126.37]	.520 [13.21]

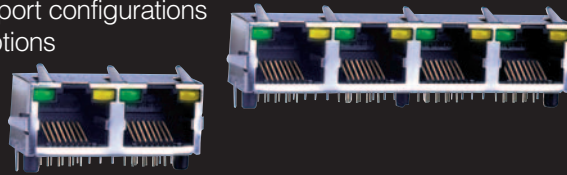


DIMENSIONS TO BE USED AS REFERENCE ONLY
PLEASE REFER TO SALES DRAWINGS FOR DETAILED DIMENSIONS
SPECIFICATIONS SUBJECT TO CHANGE



FEATURES

- Suitable for Ethernet and 10 baseT (10Mbps) LAN applications
- Meets Cat5 Ethernet requirements
- Intended for use with low temperature soldering methods
- Available with shielding for better EMI performance
- Single and multi-port configurations
- Variety of LED options



For more information about the RJES Series,
please contact Amphenol Canada.

Phone: 416.754.5656

Fax: 416.754.8668

Email: sales@amphenolcanada.com

Website: amphenolcanada.com

Address: 20 Melford Drive, Toronto ON M1B 2X6

Amphenol[®]

Data / Telecom Products