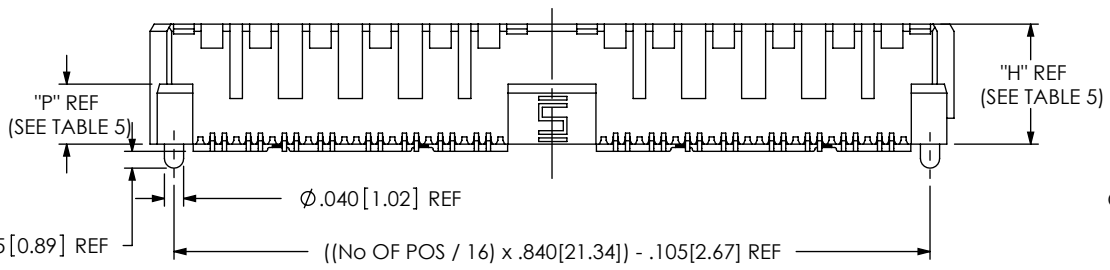
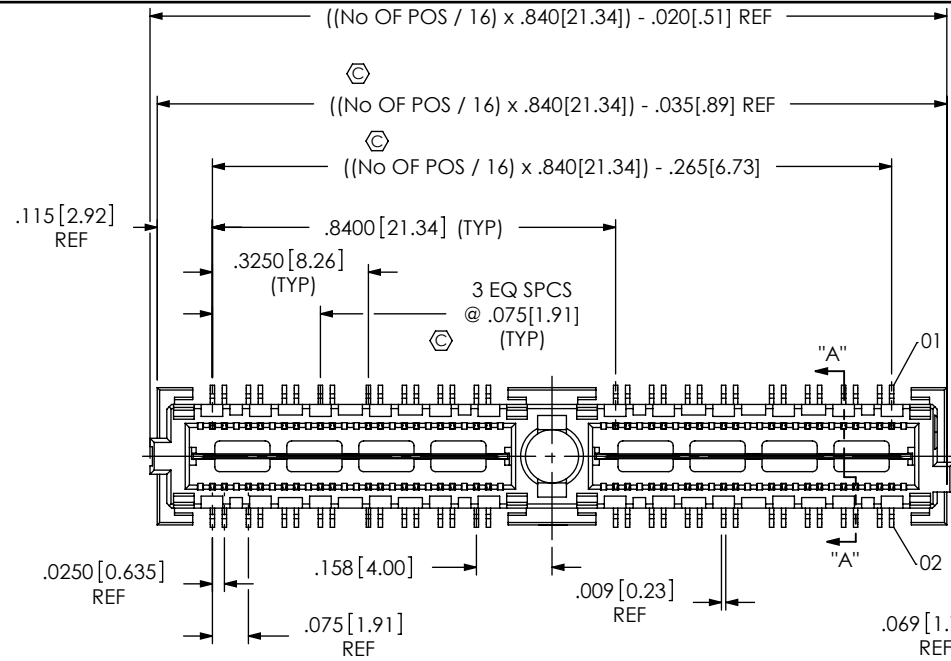


DO NOT SCALE FROM THIS PRINT



QMS-XXX-XX.XX-XX-D-DP-X-XXX-XX

No OF PAIRS
 -016, -032, -048, -064, *-080
 (PER ROW)
 LEAD STYLE
 -05.75
 -06.75 (SEE FIG. 1)
 -09.75 (SEE FIG. 9, SHEET 6)

PLATING SPECIFICATION
 -L: LIGHT GOLD (USE T-1M19-XX.XX-L, SEE TABLE 5) (AVAILABLE ON -05.75 & -06.75 LEAD STYLE ONLY)
 -H: HEAVY GOLD (USE T-1M19-XX.XX-H, SEE TABLE 5) (AVAILABLE ON -05.75 & -06.75 LEAD STYLE ONLY)
 -S: SELECTIVE GOLD (USE T-1M19-XX.XX-S, SEE TABLE 5) (AVAILABLE ON -09.75 LEAD STYLE ONLY)
 -SL: SELECTIVE LIGHT GOLD (USE T-1M19-XX.XX-SL, SEE TABLE 5) (AVAILABLE ON -09.75 LEAD STYLE ONLY)

ROW SPECIFICATION
 -D: DOUBLE
 -DP: DIFFERENTIAL PAIRS

OPTION
 -A: ALIGNMENT PIN

PACKAGING OPTION
 -TR: TAPE & REEL (-016 THRU -048 WITH NO OPTIONS) (-016 & -032 WITH -GP, -PXX, -RF1, -RT1) (-016 WITH -RF2)

OPTION
 -GP: GUIDE POSTS (SEE FIG. 3, SHEET 2)
 -K: KAPTON PAD (SEE FIG. 2, SHEET 2)
 -PC4: POWER COMBO 4 (.062" THICK BOARD) (SEE FIG. 5, SHEET 3)
 -PC8: POWER COMBO 8 (.062" THICK BOARD) (SEE FIG. 5, SHEET 3)
 -PT4: POWER COMBO 4 (.093" THICK BOARD) (5.75 STACKER HEIGHT) (SEE FIG. 5, SHEET 3)
 -PT8: POWER COMBO 8 (.093" THICK BOARD) (SEE FIG. 5, SHEET 3)
 -RF1: 1 RF POS PER END (SEE FIG. 6, SHEET 4)
 -RF2: 2 RF POS PER END (SEE FIG. 7, SHEET 4)
 -RT1: 1 RT POS PER END (SEE FIG. 8, SHEET 5)

*** = NOT TOOLED**

(END OPTION APPLIES TO BOTH ENDS, COMBINATIONS ARE NOT AVAILABLE)

(-PXX & -RFX NOT AVAILABLE IN COMBINATION WITH -A, -GP, OR -K)

(-PXX & -RFX AVAILABLE IN POS -016, -032, & -048 ONLY)

(-RFX & -RT1 AVAILABLE IN -05.75 LEAD STYLE ONLY)

(-RT1 AVAILABLE IN POS -016, -032, *-048 & *-064 WITH -A OPTION ONLY)

LEAD STYLE	"H"	"J"	"P"	QMS BODY	QMS STACKER BODY	TERMINAL	GROUND PLANE	MATED TO QFS-XX.XX
-05.75	.212 [5.38]	.2268 [5.761]	.085 [2.16]	QMSS-26-05.75-D-XX-A	N/A	T-1M19-05.75-XX	T-1G19-05.75-L	QFS-04.25 QFS-06.25
-06.75	.250 [6.35]	.2650 [6.731]	.125 [3.18]	QMSS-26-06.75-D-XX-A	N/A	T-1M19-06.75-XX	T-1G19-06.75-L	QFS-04.25 QFS-06.25
-09.75	.368 [9.35]	.3830 [9.728]	.085 [2.16]	QMSS-26-05.75-D-XX	QTSH-26-01-D-XX-A	T-1M19-09.75-XX	T-1G19-09.75-L	QFS-04.25 QFS-06.25

No OF POSITIONS	No OF BANKS	COPLANARITY
-016 THRU -048	1 THRU 3	.004[.10]
-064 AND *-080	4 AND 5	.006[.15]

- * = NOT TOOLED
- NOTES:
- ⊗ REPRESENTS A CRITICAL DIMENSION.
 - BURR ALLOWANCE: .0015 MAX.
 - MINIMUM PUSHOUT FORCE: SIGNAL: .5 LB, GROUND: 1 LB, POWER: .5 LB, RF: .5 LB.
 - ALL TERMINALS ON THE -05.75 & -06.75 LEAD STYLES WILL BE SHEARED.
 - MAX VARIANCE OF .002.
 - DIMENSION APPLIES TO CONTACTS & GROUND PLANE.
 - GROUND PLANE PRESS HEIGHT MUST BE .003[.08] LESS THAN THE MAX HEIGHT OR .001[.03] GREATER THAN THE MINIMUM HEIGHT OF THE TERMINALS.
 - PARTS TO BE PACKAGED IN TRAYS

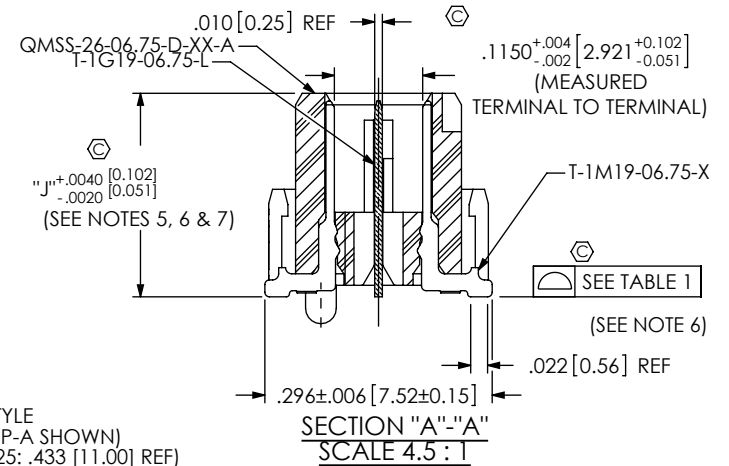
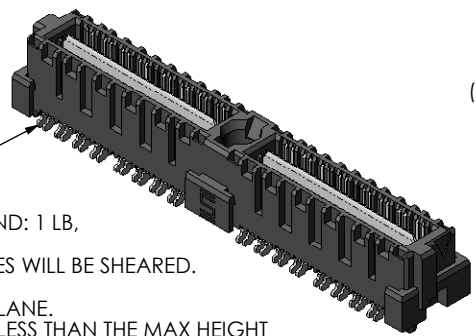


FIG. 1
 -06.75 LEAD STYLE
 (QMS-032-06.75-XX-D-DP-A SHOWN)
 (MATED HEIGHT WITH QFS-04.25: .433 [11.00] REF)

UNLESS OTHERWISE SPECIFIED, DIMENSIONS ARE IN INCHES. TOLERANCES ARE: DECIMALS ANGLES .XX: ±.01 [.3] 2° .XXX: ±.005 [.13] .XXXX: ±.0020 [.051]	PROPRIETARY NOTE THIS DOCUMENT CONTAINS INFORMATION CONFIDENTIAL AND PROPRIETARY TO SAMTEC, INC. AND SHALL NOT BE REPRODUCED OR TRANSFERRED TO OTHER DOCUMENTS OR DISCLOSED TO OTHERS OR USED FOR ANY PURPOSE OTHER THAN THAT WHICH IT WAS OBTAINED WITHOUT THE EXPRESSED WRITTEN CONSENT OF SAMTEC, INC.	<p>520 PARK EAST BLVD. NEW ALBANY, IN 47150 PHONE: 812-944-6733 FAX: 812-948-5047 e-Mail: info@SAMTEC.com code: 53322</p>
MATERIAL: DO NOT SCALE DRAWING SHEET SCALE: 1:0.4 INSULATOR: LCP, COLOR: BLACK TERMINAL & GROUND PLANE: PHOS BRONZE	DESCRIPTION: .635mm DIFFERENTIAL PAIRS TERMINAL STRIP DWG. NO. QMS-XXX-XX.XX-XX-D-DP-X-XXX-XX	BY: BRATCHER 08/07/2003 SHEET 1 OF 6

F:\DWG\MISC\Mktg\QMS-XXX-XX.XX-D-DP-X-XXX-XX-MKT.SLDRW

REVISION T

IN-PROCESS 1

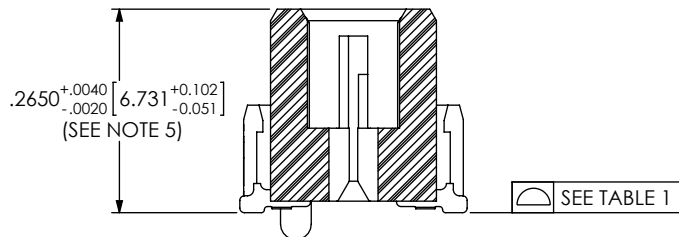
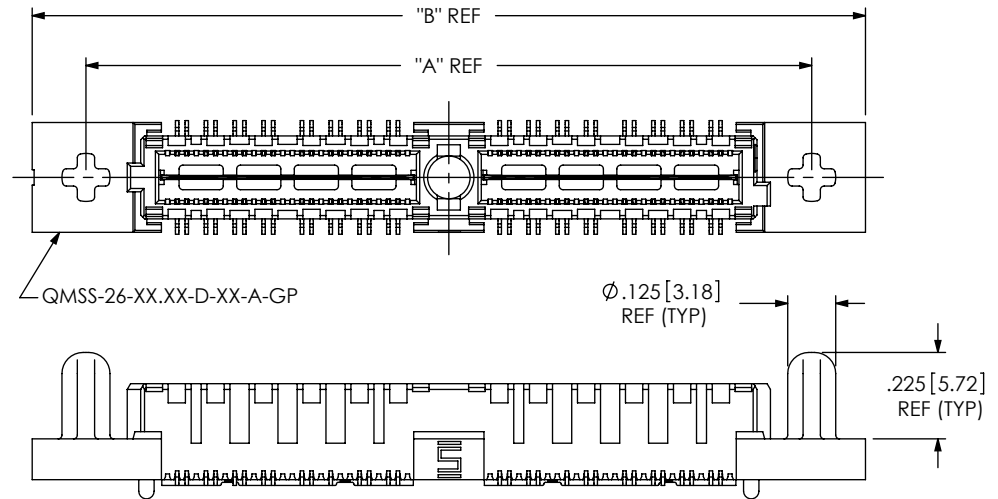


FIG. 3

-GP: GUIDE POST OPTION
(QMS-032-06.75-XX-D-DP-A-GP SHOWN)
(AVAILABLE ON -.05.75 & -.06.75 LEAD STYLES ONLY)



TERMINAL DETAILS

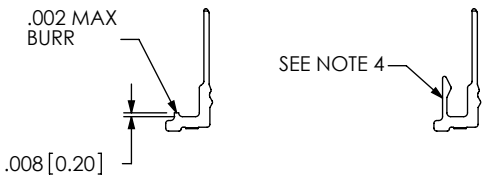
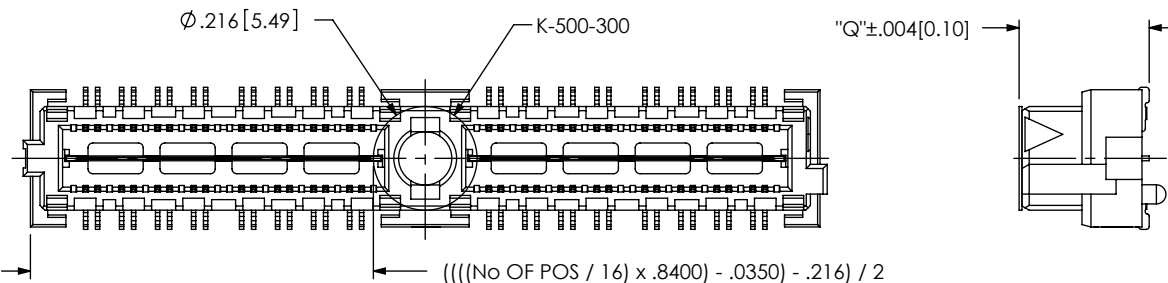


FIG. 2

-K: KAPTON PAD OPTION
(QMS-032-06.75-XX-D-DP-A-K SHOWN)



LEAD STYLE	"Q"
-.05.75	.233 [5.91]
-.06.75	.271 [6.88]

ASSEMBLY	"A"	"B"
QMS-016-XX.XX-XX-D-DP-A-GP	1.050 [26.67]	1.330 [33.78]
QMS-032-XX.XX-XX-D-DP-A-GP	1.890 [48.00]	2.170 [55.12]
QMS-048-XX.XX-XX-D-DP-A-GP	2.730 [69.34]	3.010 [76.45]
QMS-064-XX.XX-XX-D-DP-A-GP	3.570 [90.68]	3.850 [97.79]
*QMS-080-XX.XX-XX-D-DP-A-GP	4.410 [112.01]	4.690 [119.13]

* = NOT TOOLED

PROPRIETARY NOTE

THIS DOCUMENT CONTAINS INFORMATION CONFIDENTIAL AND PROPRIETARY TO SAMTEC, INC. AND SHALL NOT BE REPRODUCED OR TRANSFERRED TO OTHER DOCUMENTS OR DISCLOSED TO OTHERS OR USED FOR ANY PURPOSE OTHER THAN THAT WHICH IT WAS OBTAINED WITHOUT THE EXPRESSED WRITTEN CONSENT OF SAMTEC, INC.

DO NOT SCALE DRAWING

SHEET SCALE: 1:0.4

samtec

520 PARK EAST BLVD., NEW ALBANY, IN 47150
PHONE: 812-944-6733 FAX: 812-948-5047
e-Mail: info@SAMTEC.com code: 55322

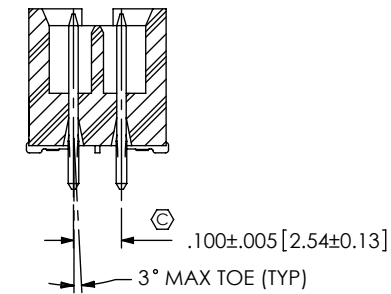
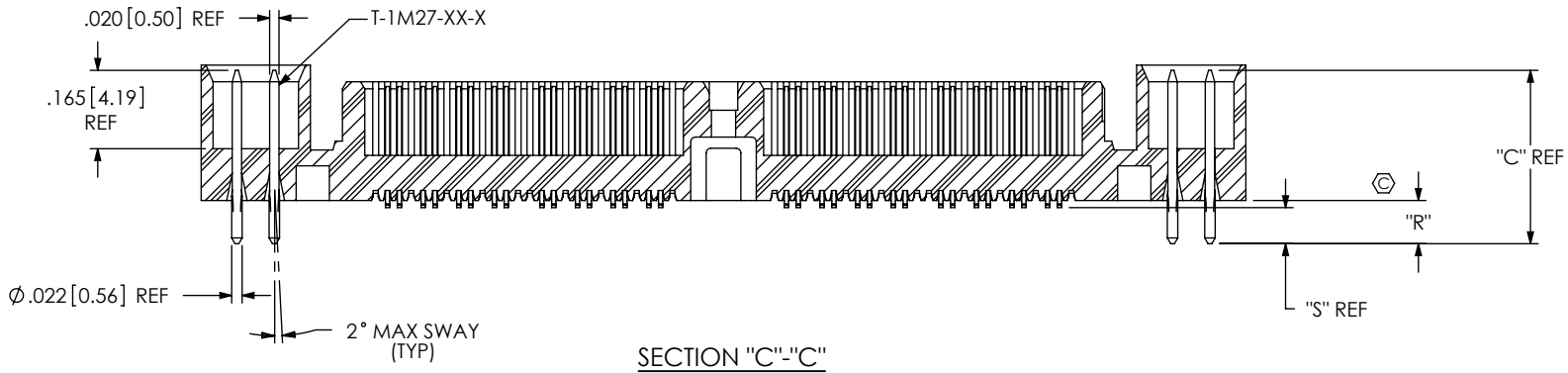
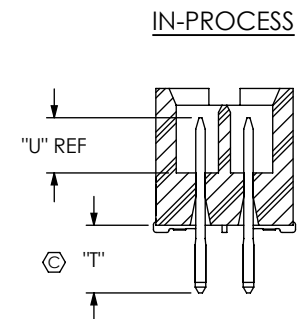
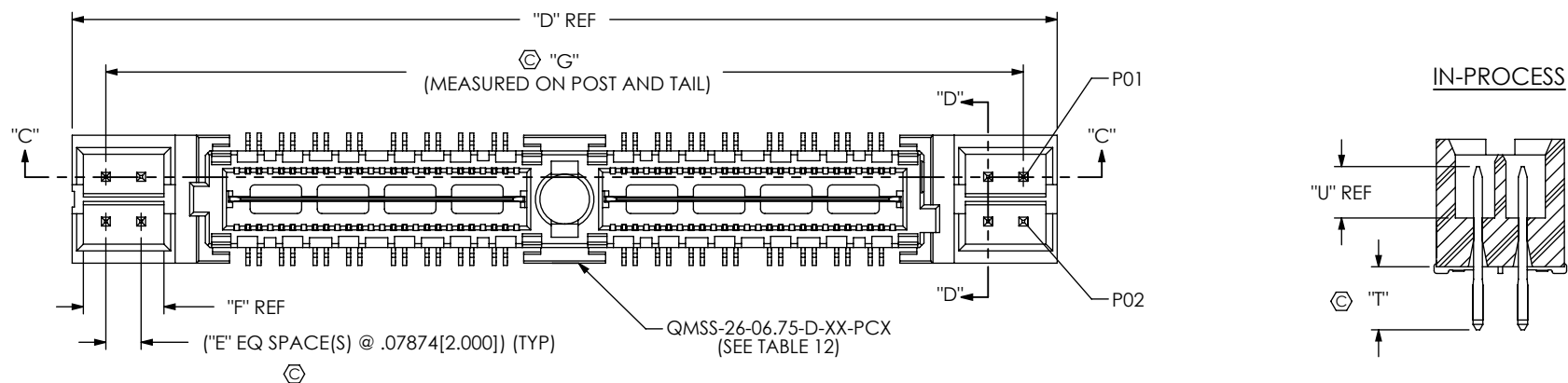
DESCRIPTION:
.635mm DIFFERENTIAL PAIRS TERMINAL STRIP

DWG. NO.
QMS-XXX-XX.XX-XX-D-DP-X-XXX-XX

BY: BRATCHER 08/07/2003 SHEET 2 OF 6

FIG. 5 -PXX OPTION

POWER COMBO OPTIONS
 QMS-032-06.75-XX-D-DP-PC4 SHOWN
 (SAME AS FIG. 1, UNLESS OTHERWISE STATED)
 [NOT AVAILABLE WITH -GP OPTION, AVAILABLE ON LEAD STYLE -06.75 ONLY]
 (AVAILABLE ON -016, -032 & -048 POSITIONS ONLY)



ASSEMBLY	"D"	"E"	"F"	"G"
QMS-016-06.75-XX-D-DP-X-PX4	1.360[34.54]	1	.180[4.57]	1.209[30.71]
QMS-016-06.75-XX-D-DP-X-PX8	1.675[42.55]	3	.337[8.56]	1.524[38.71]
QMS-032-06.75-XX-D-DP-X-PX4	2.200[55.88]	1	.180[4.57]	2.049[52.04]
QMS-032-06.75-XX-D-DP-X-PX8	2.515[63.88]	3	.337[8.56]	2.364[60.05]
QMS-048-06.75-XX-D-DP-X-PX4	3.040[77.22]	1	.180[4.57]	2.889[73.38]
QMS-048-06.75-XX-D-DP-X-PX8	3.355[85.22]	3	.337[8.56]	3.204[81.38]

LEAD STYLE	POWER OPTION	BODY
-06.75	PX4	QMS-26-06.75-D-XX-PC4
-06.75	PX8	QMS-26-06.75-D-XX-PC8
-05.75	PX4	QMS-26-05.75-D-XX-PC4
-05.75	PX8	QMS-26-05.75-D-XX-PC8

LEAD STYLE	POWER OPTION	TERMINAL	"C"	"R"	"S"	"T"	"U"
-06.75	PCX	T-1M27-01-S	.365[9.27]	.091[2.31]	.076[1.93]	.132[3.35]	.124[3.15]
-06.75	PTX	T-1M27-03-S	.400[10.16]	.126[3.20]	.111[2.82]	.132[3.35]	.159[4.04]
-05.75	PCX	T-1M27-02-S	.326[8.28]	.091[2.31]	.076[1.93]	.172[4.37]	.079[2.01]
-05.75	PTX	T-1M27-01-S	.365[9.27]	.126[3.20]	.111[2.82]	.172[4.37]	.118[3.00]

PROPRIETARY NOTE
 THIS DOCUMENT CONTAINS INFORMATION CONFIDENTIAL AND PROPRIETARY TO SAMTEC, INC. AND SHALL NOT BE REPRODUCED OR TRANSFERRED TO OTHER DOCUMENTS OR DISCLOSED TO OTHERS OR USED FOR ANY PURPOSE OTHER THAN THAT WHICH IT WAS OBTAINED WITHOUT THE EXPRESSED WRITTEN CONSENT OF SAMTEC, INC.
 DO NOT SCALE DRAWING
 SHEET SCALE: 1:0.4



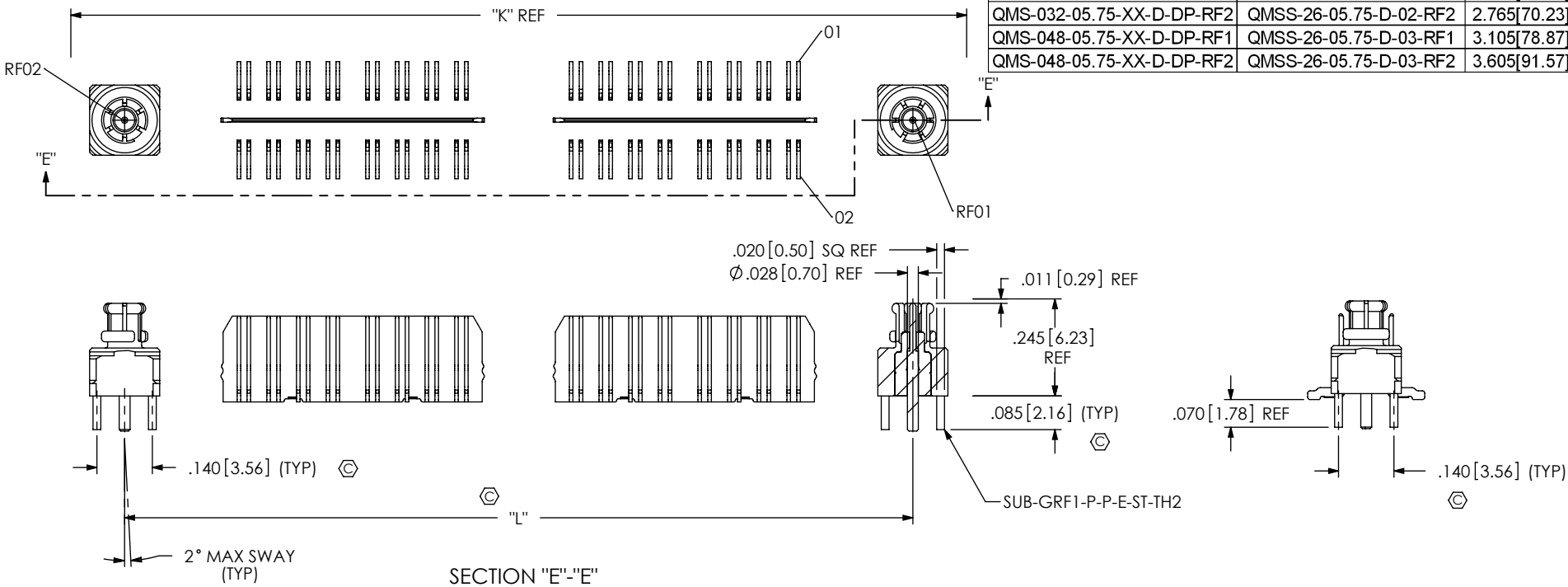
520 PARK EAST BLVD, NEW ALBANY, IN 47150
 PHONE: 812-944-6733 FAX: 812-948-5047
 e-Mail: info@SAMTEC.com code: 55322

DESCRIPTION:
 .635mm DIFFERENTIAL PAIRS TERMINAL STRIP
 DWG. NO.
 QMS-XXX-XX.XX-XX-D-DP-X-XXX-XX
 BY: BRATCHER 08/07/2003 SHEET 3 OF 6

FIG. 6: -RF1 OPTION

QMS-032-05.75-XX-D-DP-RF1 SHOWN
 (SAME AS FIG. 1, UNLESS OTHERWISE STATED)
 [NOT AVAILABLE WITH -A OR -GP OPTION, AVAILABLE ON LEAD STYLE -05.75 ONLY]
 (AVAILABLE ON -016, -032 & -048 POSITIONS ONLY)

ASSEMBLY		TABLE 7	
BODY		"K"	"L"
QMS-016-05.75-XX-D-DP-RF1	QMSS-26-05.75-D-01-RF1	1.425[36.20]	1.153[29.29]
QMS-016-05.75-XX-D-DP-RF2	QMSS-26-05.75-D-01-RF2	1.925[48.90]	1.653[41.99]
QMS-032-05.75-XX-D-DP-RF1	QMSS-26-05.75-D-02-RF1	2.265[57.53]	1.993[50.62]
QMS-032-05.75-XX-D-DP-RF2	QMSS-26-05.75-D-02-RF2	2.765[70.23]	2.493[63.32]
QMS-048-05.75-XX-D-DP-RF1	QMSS-26-05.75-D-03-RF1	3.105[78.87]	2.833[71.96]
QMS-048-05.75-XX-D-DP-RF2	QMSS-26-05.75-D-03-RF2	3.605[91.57]	3.333[84.66]



SECTION "E"- "E"

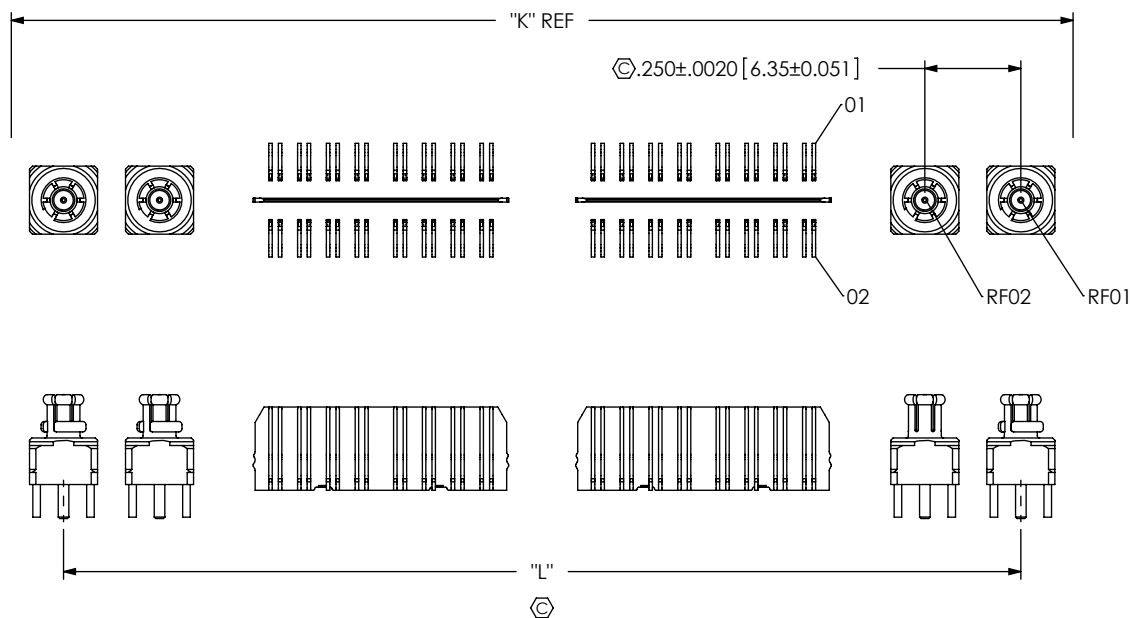


FIG. 7: -RF2 OPTION
 QMS-032-05.75-XX-D-DP-RF2 SHOWN
 (SAME AS FIG. 6, UNLESS OTHERWISE STATED)
 [NOT AVAILABLE WITH -A OR -GP OPTION, AVAILABLE ON LEAD STYLE -05.75 ONLY]
 (AVAILABLE ON -016, -032 & -048 POSITIONS ONLY)

PROPRIETARY NOTE

THIS DOCUMENT CONTAINS INFORMATION CONFIDENTIAL AND PROPRIETARY TO SAMTEC, INC. AND SHALL NOT BE REPRODUCED OR TRANSFERRED TO OTHER DOCUMENTS OR DISCLOSED TO OTHERS OR USED FOR ANY PURPOSE OTHER THAN THAT WHICH IT WAS OBTAINED WITHOUT THE EXPRESSED WRITTEN CONSENT OF SAMTEC, INC.

DO NOT SCALE DRAWING

SHEET SCALE: 1:0.4



520 PARK EAST BLVD. NEW ALBANY, IN 47150
 PHONE: 812-944-6733 FAX: 812-948-5047
 e-Mail: info@SAMTEC.com code: 55322

DESCRIPTION:
 .635mm DIFFERENTIAL PAIRS TERMINAL STRIP

DWG. NO.
 QMS-XXX-XX.XX-XX-D-DP-X-XXX-XX

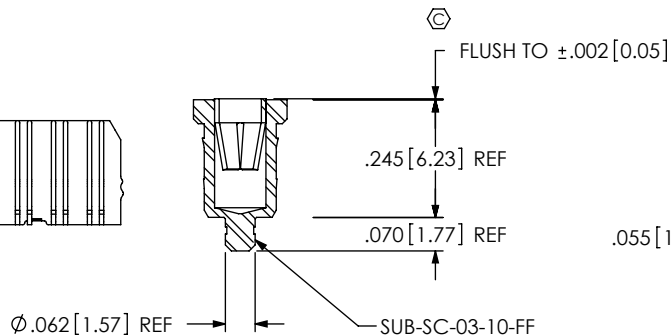
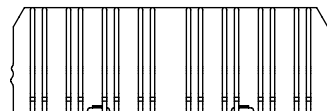
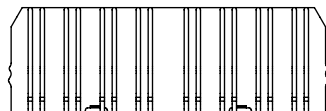
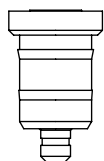
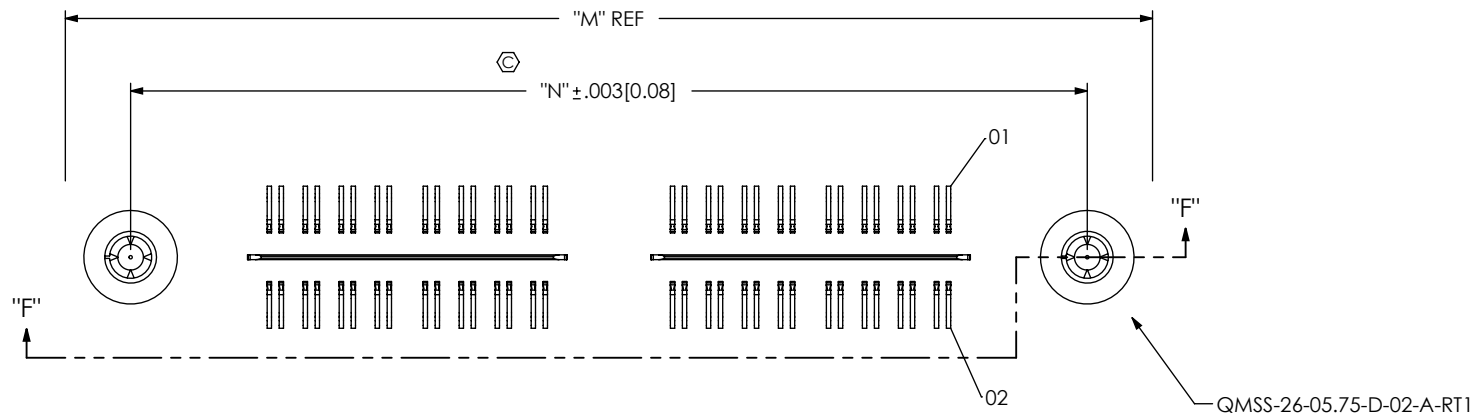
BY: BRATCHER 08/07/2003 SHEET 4 OF 6

FIG. 8 -RT1 OPTION

QMS-032-05.75-XX-D-DP-A-RT1 SHOWN
 (SAME AS FIG. 1, UNLESS OTHERWISE STATED)
 [NOT AVAILABLE WITH -GP, -PCX OR -RFX OPTION, AVAILABLE ON LEAD STYLE -05.75 ONLY]
 (AVAILABLE ON -016, -032, -048, & -064 POSITIONS WITH -A OPTION ONLY)

TABLE 8			
ASSEMBLY	BODY	"M"	"N"
QMS-016-05.75-XX-D-DP-A-RT1	QMSS-26-05.75-D-01-A-RT1	1.425[36.20]	1.153[29.29]
QMS-032-05.75-XX-D-DP-A-RT1	QMSS-26-05.75-D-02-A-RT1	2.265[57.53]	1.993[50.62]
**QMS-048-05.75-XX-D-DP-A-RT1	QMSS-26-05.75-D-03-A-RT1	3.105[78.87]	2.833[71.96]
**QMS-064-05.75-XX-D-DP-A-RT1	QMSS-26-05.75-D-04-A-RT1	3.945[100.20]	3.673[93.29]

** - NOT RELEASED



SECTION "F"-"F"

PROPRIETARY NOTE

THIS DOCUMENT CONTAINS INFORMATION CONFIDENTIAL AND PROPRIETARY TO SAMTEC, INC. AND SHALL NOT BE REPRODUCED OR TRANSFERRED TO OTHER DOCUMENTS OR DISCLOSED TO OTHERS OR USED FOR ANY PURPOSE OTHER THAN THAT WHICH IT WAS OBTAINED WITHOUT THE EXPRESSED WRITTEN CONSENT OF SAMTEC, INC.

DO NOT SCALE DRAWING

SHEET SCALE: 1:0.4



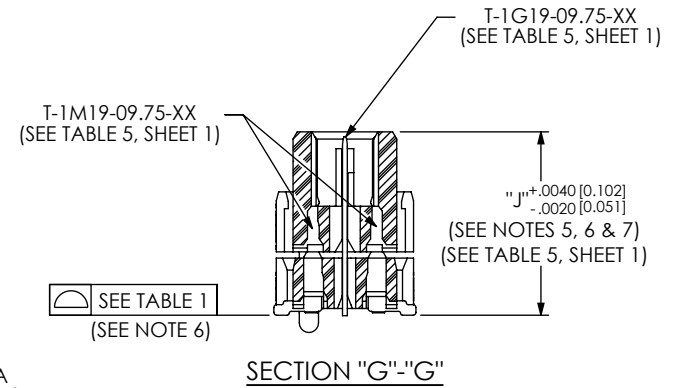
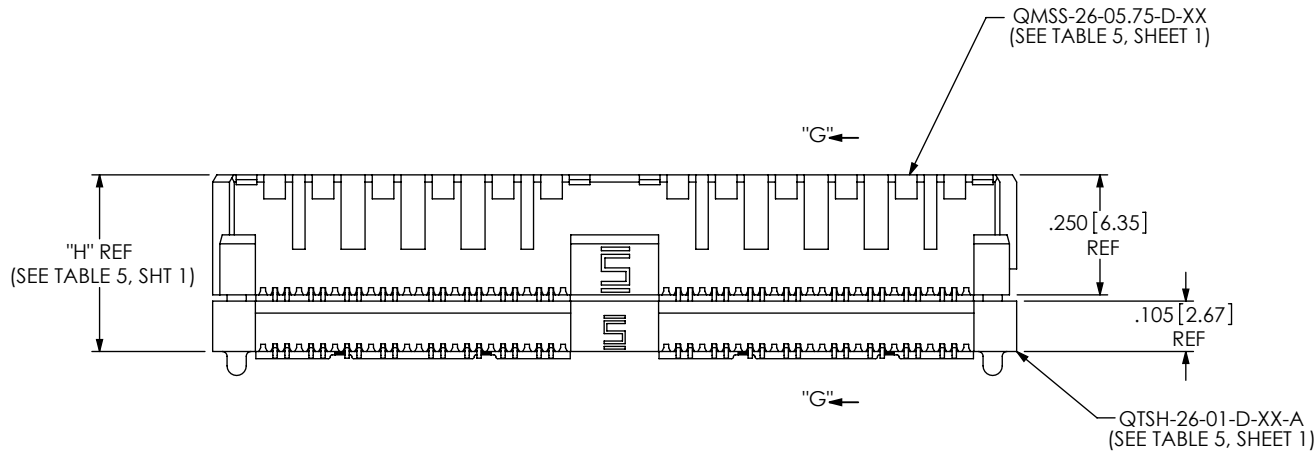
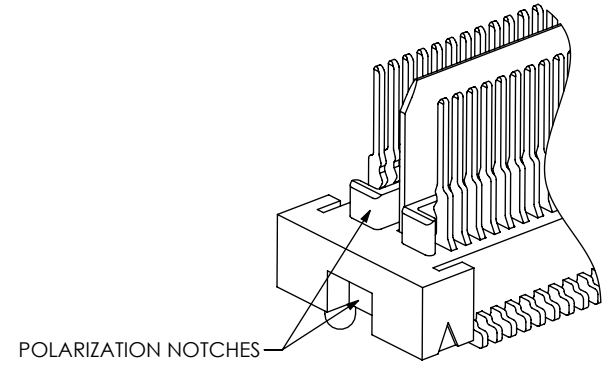
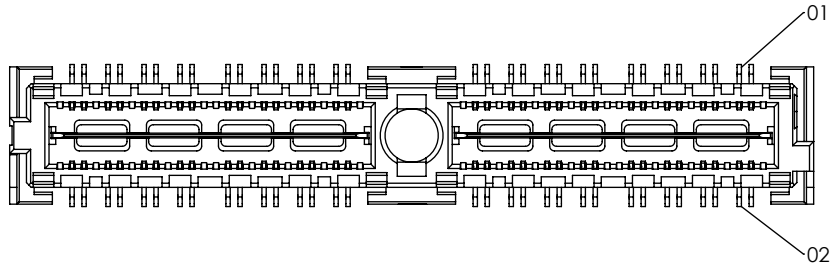
520 PARK EAST BLVD, NEW ALBANY, IN 47150
 PHONE: 812-944-6733 FAX: 812-948-5047
 e-Mail: info@SAMTEC.com code: 55322

DESCRIPTION:
 .635mm DIFFERENTIAL PAIRS TERMINAL STRIP

DWG. NO.
 QMS-XXX-XX.XX-XX-D-DP-X-XXX-XX

BY: BRATCHER 08/07/2003 SHEET 5 OF 6

FIG. 9
 -09.75 LEAD STYLE
 (QMS-032-09.75-XX-D-DP-A SHOWN)
 (SAME AS FIG. 1, EXCEPT AS SHOWN)



PROPRIETARY NOTE
 THIS DOCUMENT CONTAINS INFORMATION
 CONFIDENTIAL AND PROPRIETARY TO
 SAMTEC, INC. AND SHALL NOT BE REPRODUCED
 OR TRANSFERRED TO OTHER DOCUMENTS OR
 DISCLOSED TO OTHERS OR USED FOR ANY
 PURPOSE OTHER THAN THAT WHICH IT WAS
 OBTAINED WITHOUT THE EXPRESSED WRITTEN
 CONSENT OF SAMTEC, INC.

DO NOT SCALE DRAWING
 SHEET SCALE: 1:0.4

samtec
 520 PARK EAST BLVD, NEW ALBANY, IN 47150
 PHONE: 812-944-6733 FAX: 812-948-5047
 e-Mail: info@SAMTEC.com code: 55322

DESCRIPTION: .635mm DIFFERENTIAL PAIRS TERMINAL STRIP
DWG. NO. QMS-XXX-XX.XX-XX-D-DP-X-XXX-XX
BY: BRATCHER 08/07/2003 SHEET 6 OF 6