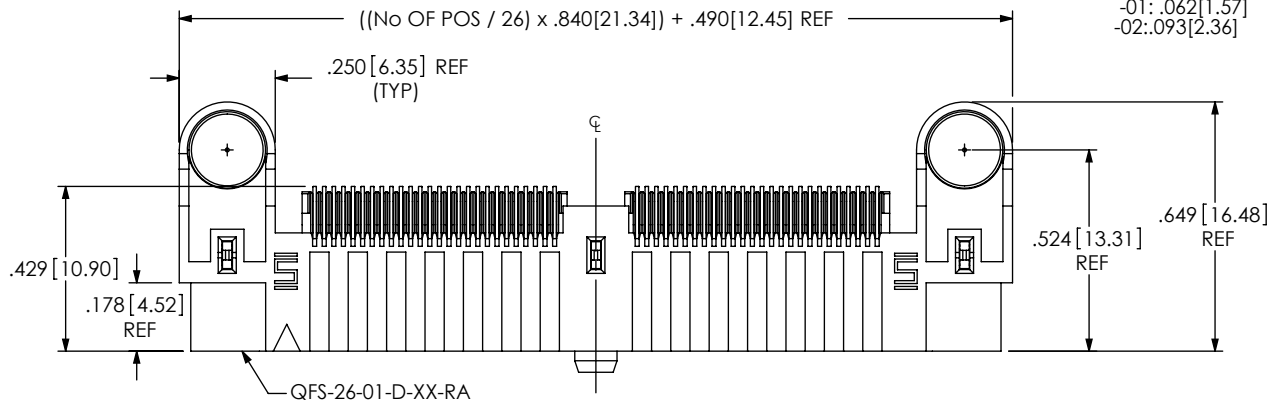


QFS-XXX-XX-XX-D-RA-XXX-XX

FIG. 1
(QFS-052-01-XX-D-RA SHOWN)



No OF POSITIONS
-026, -052, -078, -104
(PER ROW)

LEAD STYLE
-01: .062[1.57]
-02: .093[2.36]

PACKAGING OPTION
-TR: TAPE & REEL PACKAGING
(-026 & -052 WITH NO OPTIONS)
(-026 & -052 WITH -PC4)
(-026 WITH -PC8)

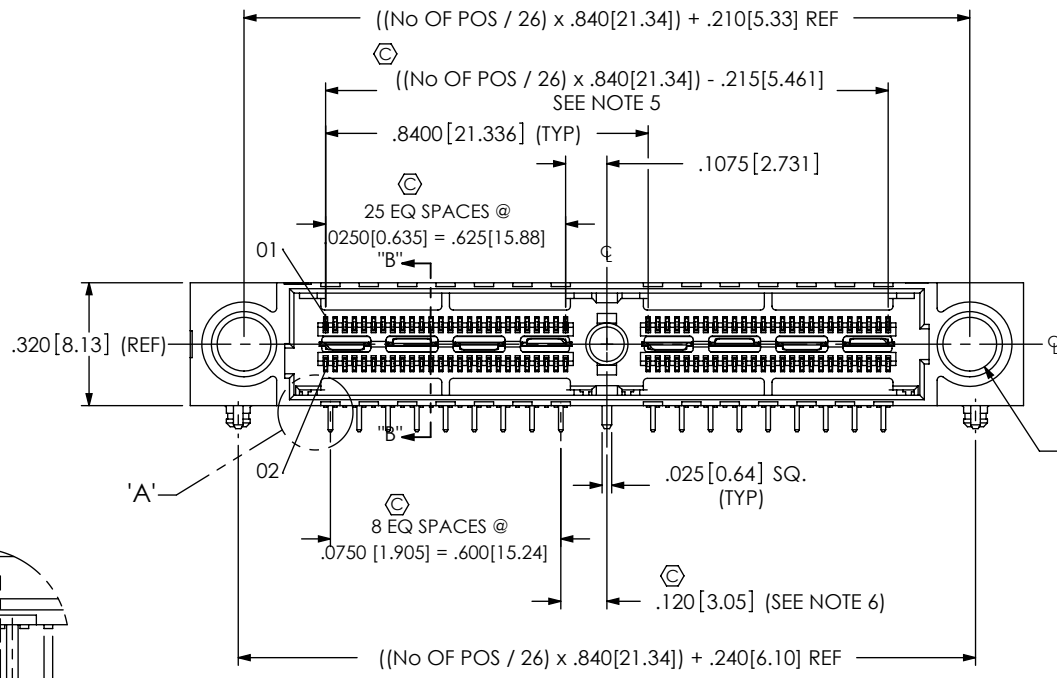
OPTION
-K: KAPTON PAD (USE K-850-650)
-PC4: 4 POWER PINS
(SEE FIG. 2, SHEET 3)
(NOT AVAILABLE WITH -104 POS)
-PC8: 8 POWER PINS
(SEE FIG. 3, SHEET 3)
(NOT AVAILABLE WITH -104 POS)

-RA: RIGHT ANGLE

ROW SPECIFICATION
-D: DOUBLE (USE QFS-26-01-D-XX-RA)

PLATING SPECIFICATION

- SL: SELECTIVE LIGHT GOLD
(USE C-186-01-SL, C-187-01-SL, WT-28-XX-T, IM-1G21-XX-L, C-79-XX-L, T-1R37-XX-T)
- S: SELECTIVE GOLD
(USE C-186-01-S, C-187-01-S, WT-28-XX-T, IM-1G21-XX-L, C-79-XX-S, T-1R37-XX-T)
- L -L: LIGHT GOLD
(USE C-186-01-L, C-187-01-L, WT-28-XX-T, IM-1G21-XX-L, C-79-XX-L, T-1R37-XX-T)
- L -H: HEAVY GOLD
(USE C-186-01-H, C-187-01-H, WT-28-XX-T, IM-1G21-XX-L, C-79-XX-H, T-1R37-XX-T)



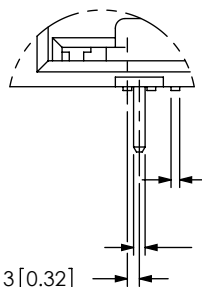
$.055[1.40]$ REF

$\phi .140[3.56]$ REF (TYP)

$\phi .062[1.57]$ (REF)

NOTES:

1. \odot REPRESENTS A CRITICAL DIMENSION.
2. BURR ALLOWANCE: .0010[0.02] MAX.
3. MINIMUM PUSHOUT FORCE: SIGNAL: .5 LB [2.22 N], SHIELD/GROUND, POWER PIN AND COUNTERWEIGHT: 1 LB [4.45 N].
4. PARTS TO BE PACKAGED IN TRAYS AS STANDARD.
5. PLUS .007" ALLOWED ON 4 BANK.
6. DOES NOT APPLY TO 1 BANK.



DETAIL 'A'
SCALE 5:1

UNLESS OTHERWISE SPECIFIED, DIMENSIONS ARE IN INCHES.
TOLERANCES ARE:
DECIMALS ANGLES
.XX: $\pm .01$ [.3] 2°
.XXX: $\pm .005$ [.13]
.XXXX: $\pm .0020$ [.051]

PROPRIETARY NOTE
THIS DOCUMENT CONTAINS INFORMATION CONFIDENTIAL AND PROPRIETARY TO SAMTEC, INC. AND SHALL NOT BE REPRODUCED OR TRANSFERRED TO OTHER DOCUMENTS OR DISCLOSED TO OTHERS OR USED FOR ANY PURPOSE OTHER THAN THAT WHICH IT WAS OBTAINED WITHOUT THE EXPRESSED WRITTEN CONSENT OF SAMTEC, INC.

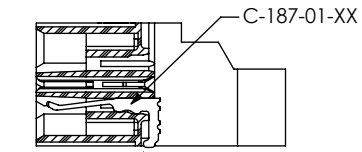


520 PARK EAST BLVD, NEW ALBANY, IN 47150
PHONE: 812-944-6733 FAX: 812-948-5047
e-Mail: info@SAMTEC.com code: 5332

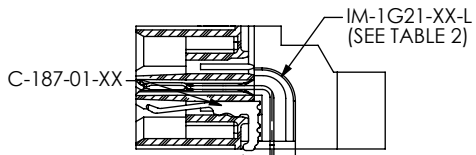
MATERIAL: DO NOT SCALE DRAWING SHEET SCALE: 2:1
INSULATOR: LCP, COLOR BLACK
CONTACT, POWER PIN & GROUND PLANE: PHOS BRONZE
COUNTERWEIGHT: BRASS

DESCRIPTION:
.635mm DUAL ROW RIGHT ANGLE SOCKET ASSEMBLY
DWG. NO.
QFS-XXX-XX-XX-D-RA-XXX-XX

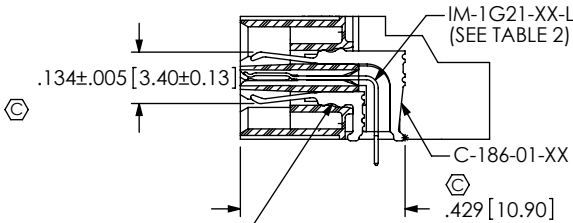
REVISION L



IN-PROCESS 1

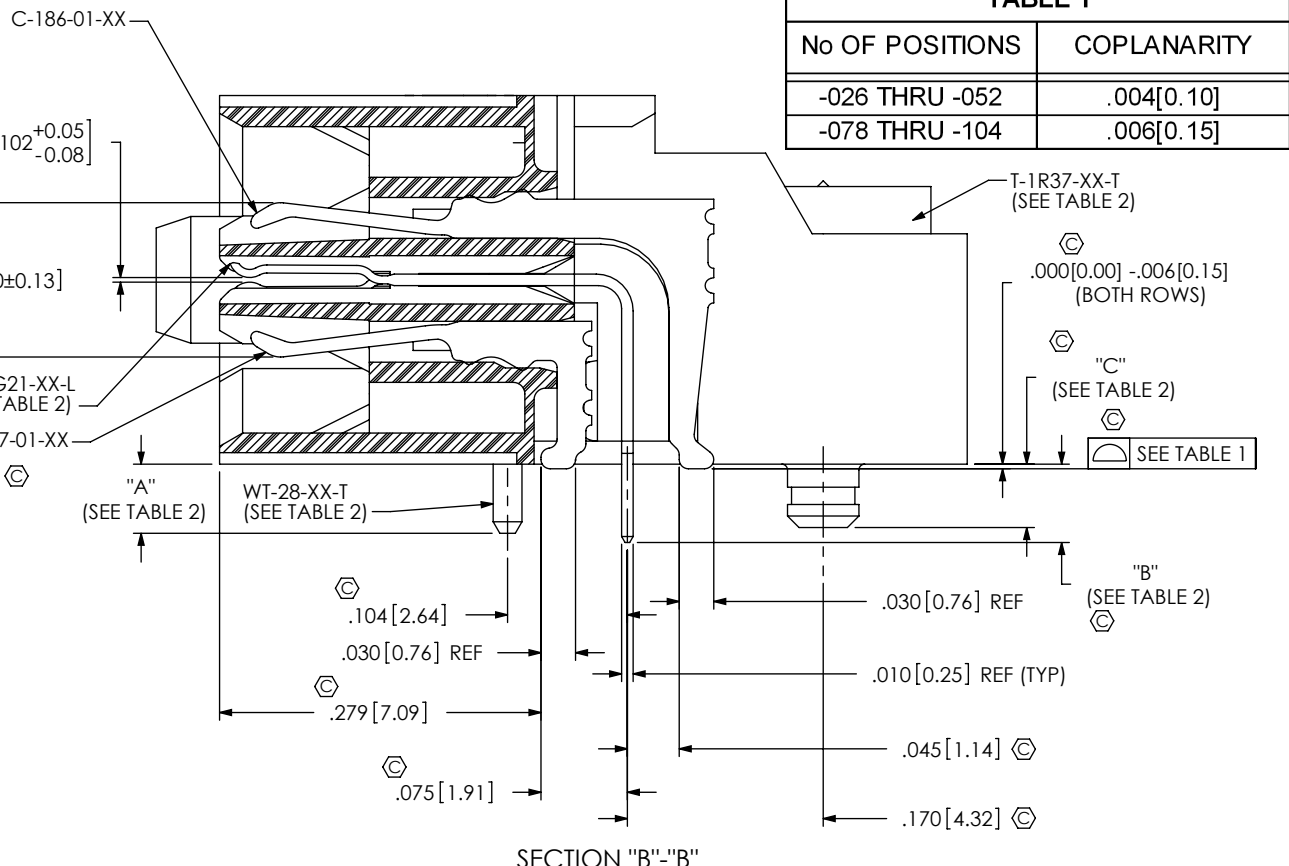
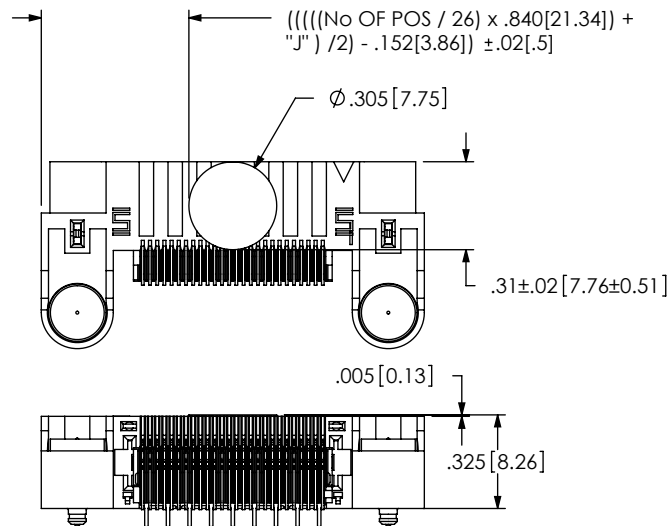


IN-PROCESS 2



IN-PROCESS 3

-K: KAPTON PAD
QFS-026-01-XX-D-RA-K SHOWN
(USE K-850-650)



No OF POSITIONS	COPLANARITY
-026 THRU -052	.004[0.10]
-078 THRU -104	.006[0.15]

LEAD STYLE	"A"	"B"	"C"	WT-28-XX-T	IM-1G21-XX-L	T-1R37-XX-T
-01	.060[1.52]	.068[1.73]	.055[1.40]	WT-28-01-T	IM-1G21-01-L	T-1R37-01-T
-02	.098[2.49]	.099[2.51]	.086[2.18]	WT-28-02-T	IM-1G21-02-L	T-1R37-02-T

OPTION	"J"
NONE	.490 [12.45]
-PC4	1.015 [25.78]
-PC8	1.330 [33.78]

PROPRIETARY NOTE
THIS DOCUMENT CONTAINS INFORMATION
CONFIDENTIAL AND PROPRIETARY TO
SAMTEC, INC. AND SHALL NOT BE REPRODUCED
OR TRANSFERRED TO OTHER DOCUMENTS OR
DISCLOSED TO OTHERS OR USED FOR ANY
PURPOSE OTHER THAN THAT WHICH IT WAS
OBTAINED WITHOUT THE EXPRESSED WRITTEN
CONSENT OF SAMTEC, INC.

DO NOT SCALE DRAWING
SHEET SCALE: 6:1



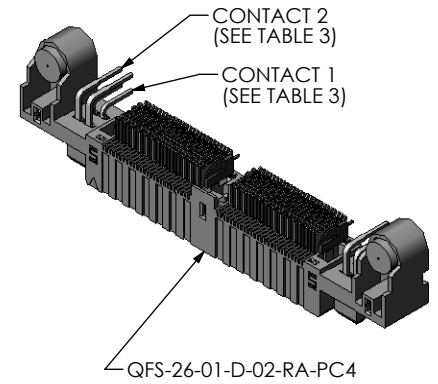
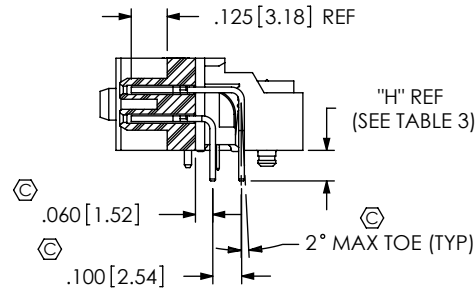
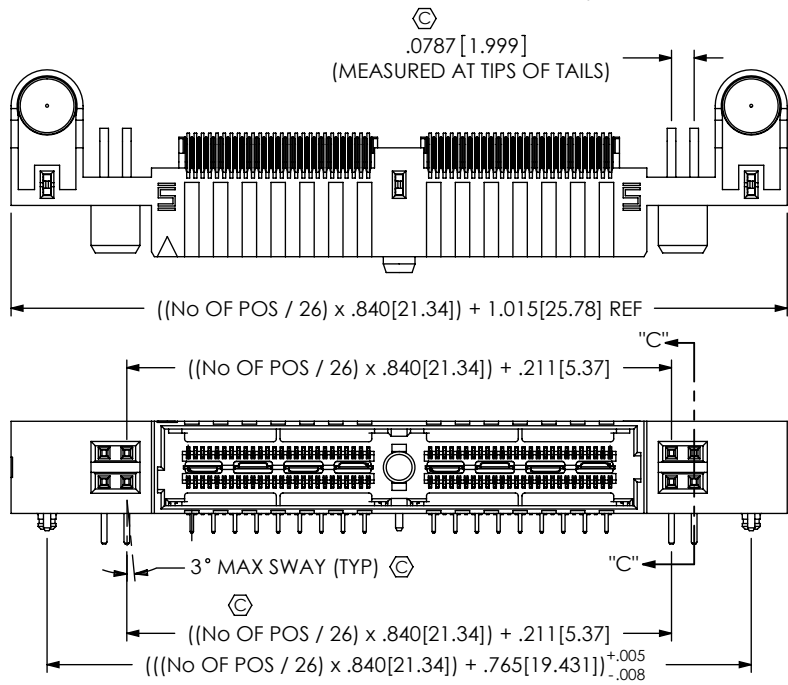
520 PARK EAST BLVD, NEW ALBANY, IN 47150
PHONE: 812-944-6733 FAX: 812-948-5047
e-Mail: info@SAMTEC.com code: 55322

DESCRIPTION:
.635mm DUAL ROW RIGHT ANGLE SOCKET ASSEMBLY

DWG. NO.
QFS-XXX-XX-XX-D-RA-XXX-XX

BY: CLAY W 8/25/2006 SHEET 2 OF 4

FIG. 2
(QFS-052-01-XX-D-RA-PC4 SHOWN)
(SAME AS FIG. 1, DIFFERENT AS SHOWN)



SECTION "C"- "C"

TABLE 3							
LEAD STYLE	CONTACT 1	CONTACT 2	"D"	"E"	"F"	"G"	"H"
-01	C-79-28-XX	C-79-29-XX	.261[6.63]	.484[12.29]	.461[11.71]	.684[17.37]	.106[2.69]
-02	C-79-20-XX	C-79-20A-XX	.287[7.29]	.510[12.95]	.487[12.37]	.710[18.03]	.132[3.35]

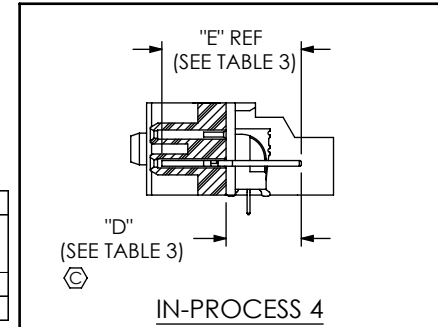
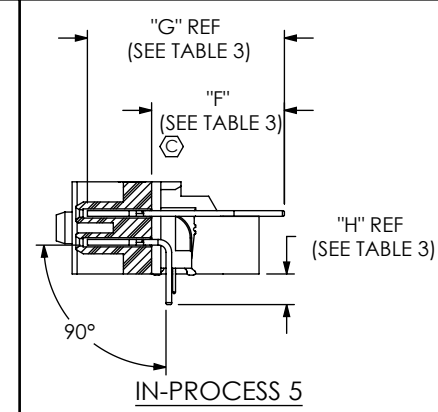
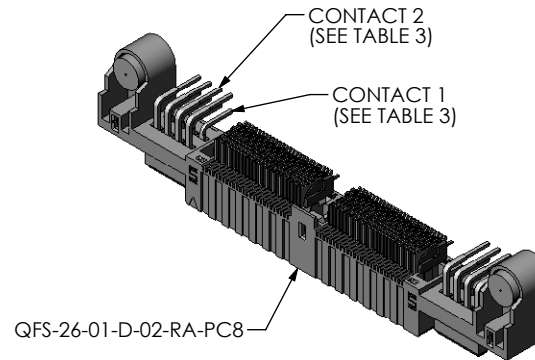
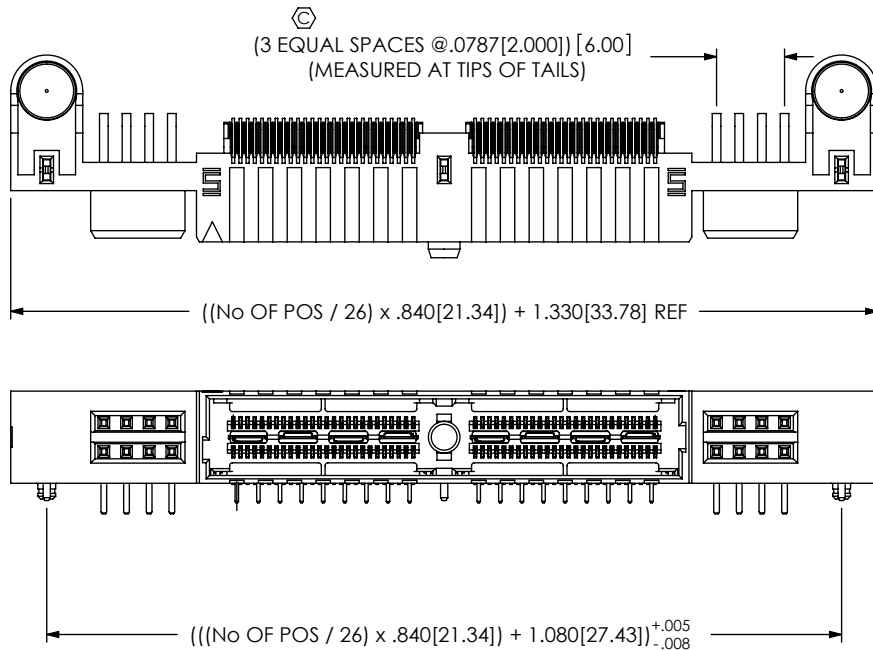


FIG. 3
(QFS-052-01-XX-D-RA-PC8 SHOWN)
(SAME AS FIG. 2, DIFFERENT AS SHOWN)



PROPRIETARY NOTE

THIS DOCUMENT CONTAINS INFORMATION CONFIDENTIAL AND PROPRIETARY TO SAMTEC, INC. AND SHALL NOT BE REPRODUCED OR TRANSFERRED TO OTHER DOCUMENTS OR DISCLOSED TO OTHERS OR USED FOR ANY PURPOSE OTHER THAN THAT WHICH IT WAS OBTAINED WITHOUT THE EXPRESSED WRITTEN CONSENT OF SAMTEC, INC.

DO NOT SCALE DRAWING

SHEET SCALE: 1.5:1

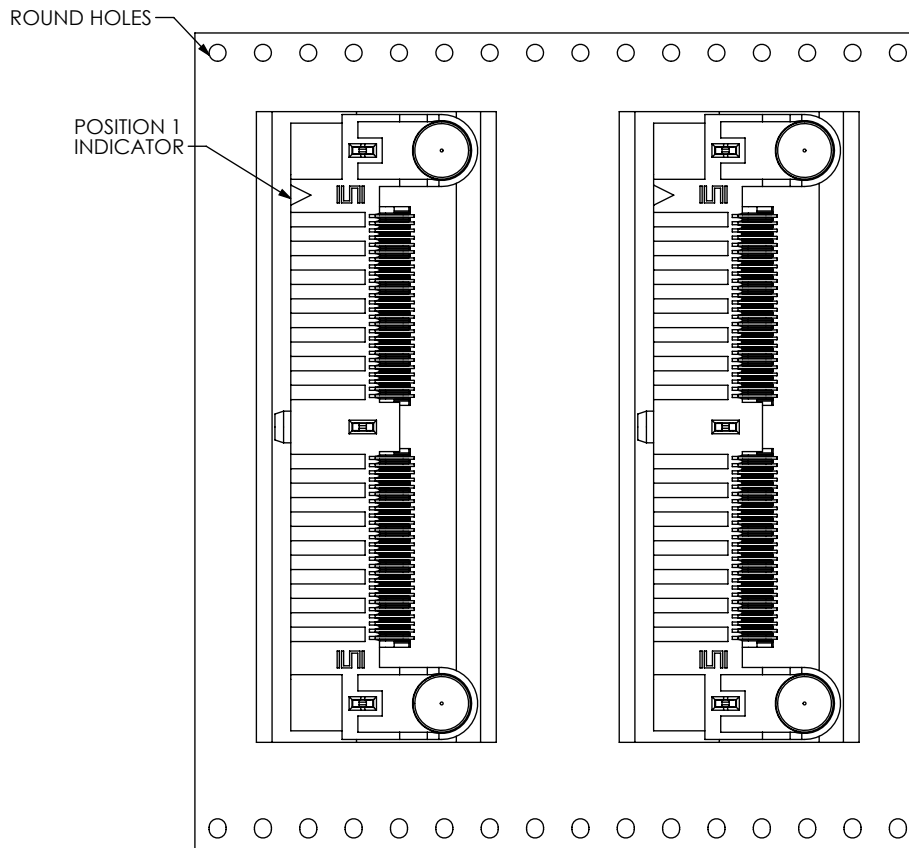
samtec

520 PARK EAST BLVD. NEW ALBANY, IN 47150
PHONE: 812-944-6733 FAX: 812-948-5047
e-Mail: info@SAMTEC.com code: 55322

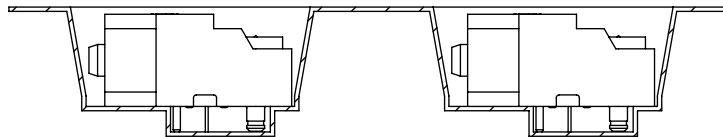
DESCRIPTION:
.635mm DUAL ROW RIGHT ANGLE SOCKET ASSEMBLY

DWG. NO.
QFS-XXX-XX-XX-D-RA-XXX-XX

BY: CLAY W 8/25/2006 SHEET 3 OF 4



USER DIRECTION OF UN-REELING →
POCKET NOT DETAILED



PACKAGING VIEW
-TR: TAPE & REEL OPTION
(QFS-052-01-XX-D-RA-TR SHOWN)

PROPRIETARY NOTE
THIS DOCUMENT CONTAINS INFORMATION
CONFIDENTIAL AND PROPRIETARY TO
SAMTEC, INC. AND SHALL NOT BE REPRODUCED
OR TRANSFERRED TO OTHER DOCUMENTS OR
DISCLOSED TO OTHERS OR USED FOR ANY
PURPOSE OTHER THAN THAT WHICH IT WAS
OBTAINED WITHOUT THE EXPRESSED WRITTEN
CONSENT OF SAMTEC, INC.

DO NOT SCALE DRAWING

SHEET SCALE: 1:1



520 PARK EAST BLVD, NEW ALBANY, IN 47150
PHONE: 812-944-6733 FAX: 812-948-5047
e-Mail: info@SAMTEC.com code: 55322

DESCRIPTION:
.635mm DUAL ROW RIGHT ANGLE SOCKET ASSEMBLY

DWG. NO.
QFS-XXX-XX-XX-D-RA-XXX-XX

BY: CLAY W 8/25/2006 SHEET 4 OF 4