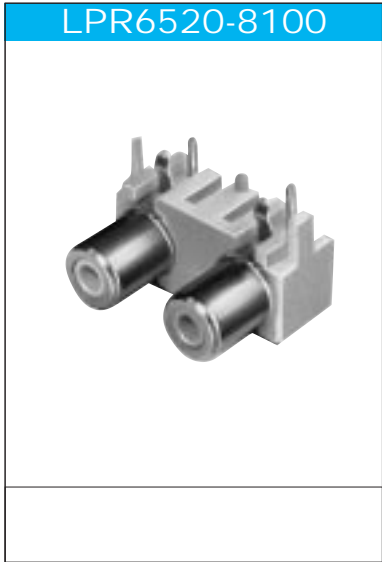
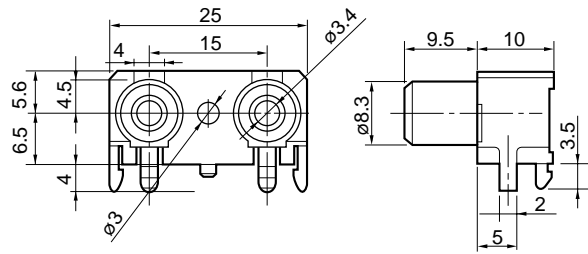


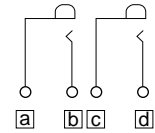
# 2P PIN JACK



LPR6520-8100



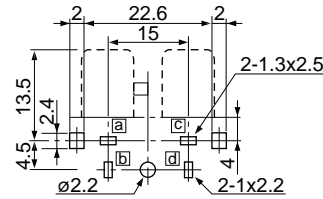
Circuits  
(Without Switch)



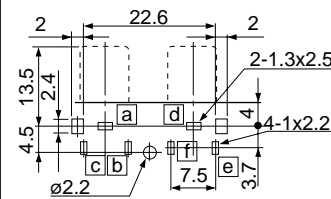
Right Angle

LPR6520-8100  
(Without Switch)

LPR6521-1800  
(With Switch)

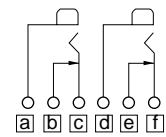


(Recommended Mounting Hole)  
(The Pattern Side)

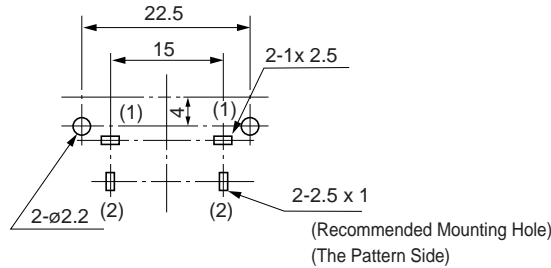
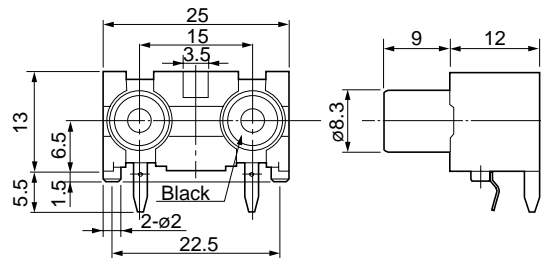


(Recommended Mounting Hole)  
(The Pattern Side)

(With Switch)

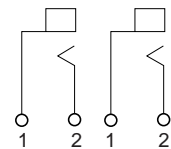


LPR6520-0900



(Recommended Mounting Hole)  
(The Pattern Side)

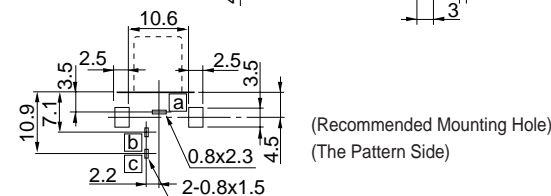
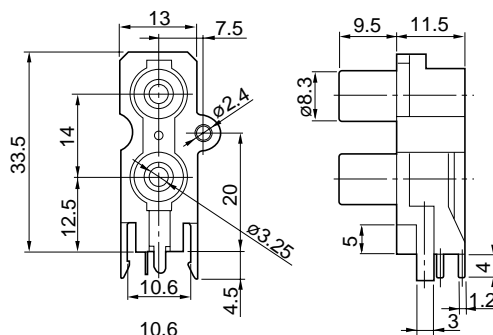
Circuits  
(Without Switch)



Right Angle

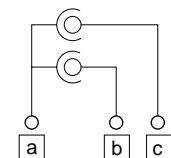


LPR1250-0001



(Recommended Mounting Hole)  
(The Pattern Side)

Circuits  
(Without Switch)

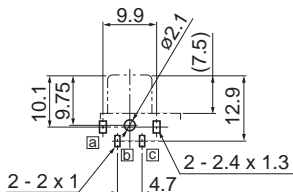
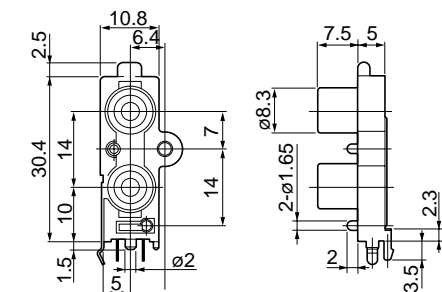


Right Angle

# 2P PIN JACK

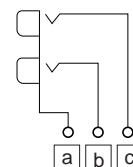
## LPR1020-0600

<Thin Type>



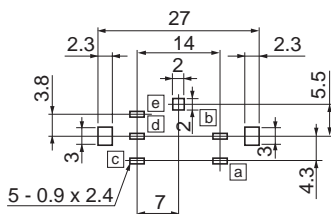
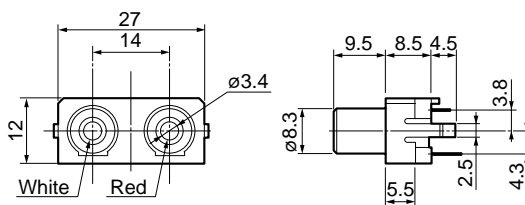
(Recommended Mounting Hole)  
(The Pattern Side)

Circuits  
(Without Switch)



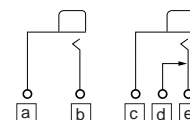
## Right Angle

## LPV8529-1400



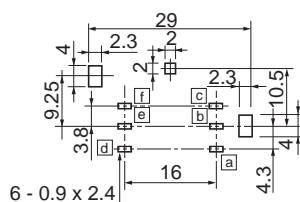
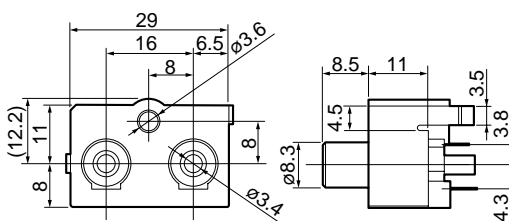
(Recommended Mounting Hole)  
(The Pattern Side)

Circuits  
(With Switch)



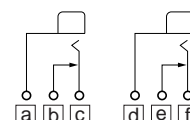
## Vertical

## LPV1529-0100



(Recommended Mounting Hole)  
(The Pattern Side)

Circuits  
(With Switch)



## Vertical