

## 2 Contact Row PCB Railways Connectors

- Mother/Daughter board PCB connector.
- 35 ways on 2 rows.
- Pitch 2.54.
- Guiding device.
- > 5000 mating and unmating cycles.
- NF F61-030 railway approved.

### Technical Characteristics

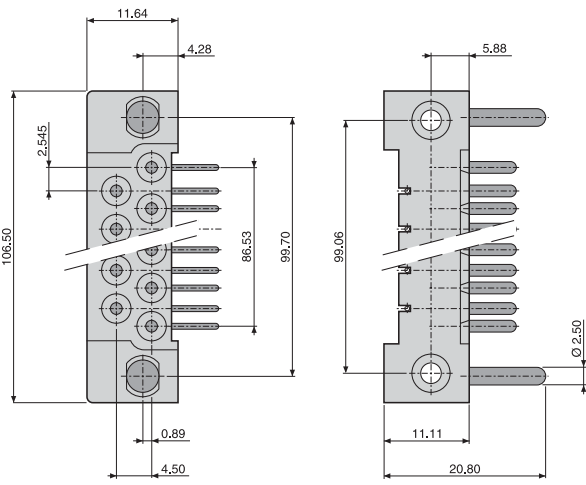
MATERIAL		PIN	Ø 1.50 mm, non-removable
Insulator	Thermoset	MOUNTING	On plug: by screw & transverse. On receptacle: axial thanks 2 guides
Pin & socket body	Brass	GUIDING PINS	2 male guides fixed on the plug
Socket wires	Copper alloy	DIELECTRIC WITHSTANDING VOLTAGE	2000 Vrms
Guides	Brass	CURRENT RATING	8 A Max (25 °C)
PLATING		INSULATION RESISTANCE	> 10 <sup>3</sup> MΩ (500 Vcc)
Pin and socket wires	Au/Ni	CONTACT RESISTANCE	< 2.50 mΩ
Guides	Ni	TEMPERATURE RANGE	-55 °C, +125 °C
PITCH	2.54 mm		

### Ordering Information

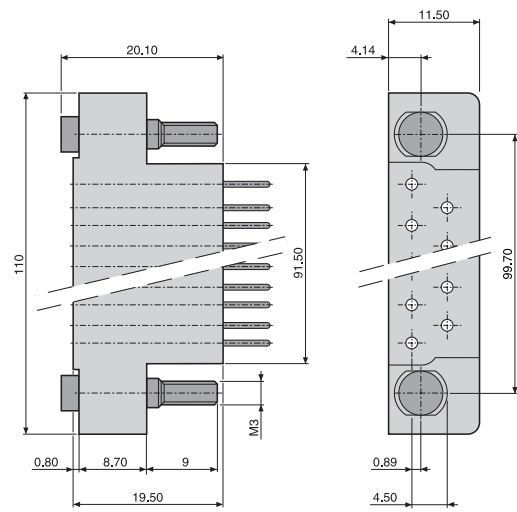
SERIES	K J B 035 -- -- ---					
MODEL						
2 rows						
NUMBER OF CONTACTS	035					
PART - POLARITY - PLATING						
13 Male plug	22 Female receptacle					
17* Male plug, tinned terminations	26 Female receptacle, tinned terminations*					
TERMINATIONS						
10 90° angle	30** Straight	56** Wire wrap (3 wraps)				
20** To crimp	40** Solder cup	62** Post termination	91** Saver			
MOUNTING						
110 Transverse mounting (plug)	121 Axial mounting (receptacle)					
* Tin plating is only available for 90° angle and straight terminations (10 and 30)						
** Terminations only for receptacle						

Plug and receptacle dimensions

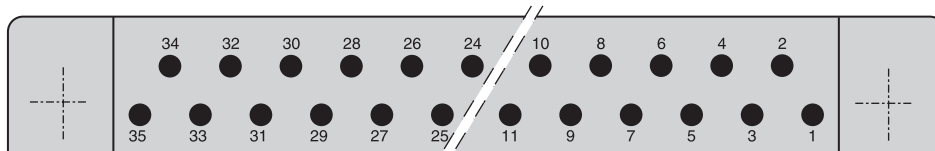
Plug



Receptacle



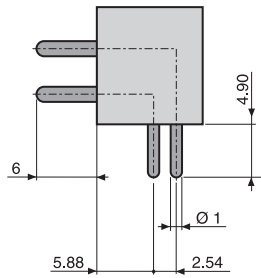
Contact layout



Wiring side view

Plug termination

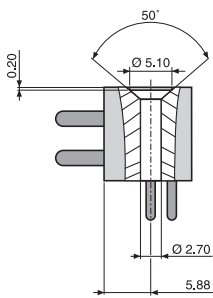
90° trough board



Ref: 10

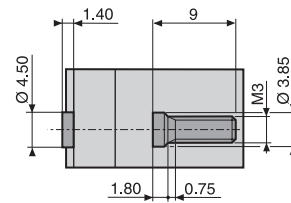
Mounting

Plug transverse



Ref: 110

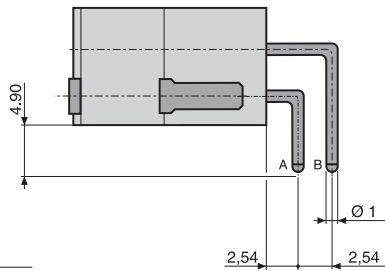
Receptacle axial



Ref: 121

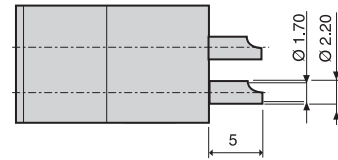
Receptacle terminations

90° termination



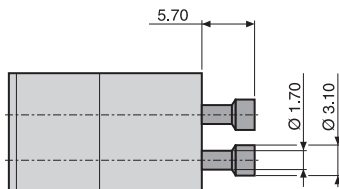
Ref: 10

Solder cup



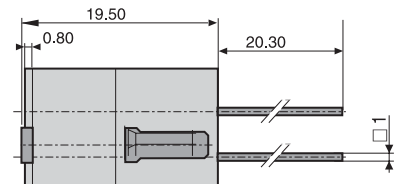
Ref: 40

To crimp



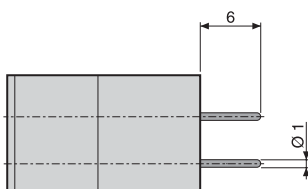
Ref: 20

Wire wrap (3 wraps)



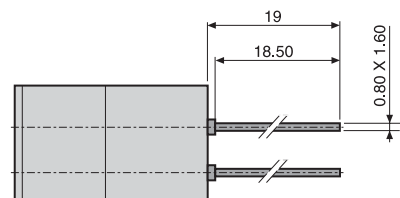
Ref: 56

Straight



Ref: 30

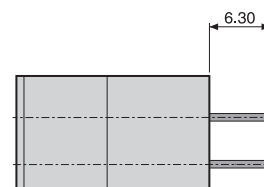
Post termination



Ref: 62

Terminations	Row	Contacts P/N
10	A	0150952-10RN1
	B	0150962-10RN1
20		0150372-20RN1
30		0150692-30RQ5
40		0150592-40RN1
56		0151122-56RN1
62		0150812-62RN1
91		0151542-91-RN7

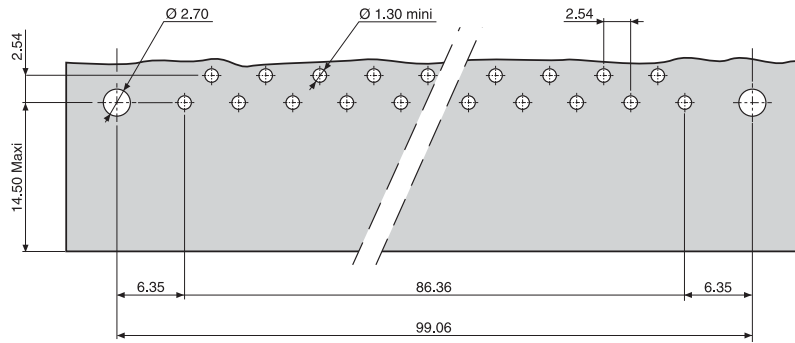
Saver



Ref: 91

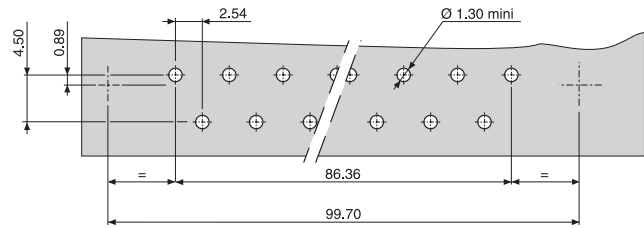
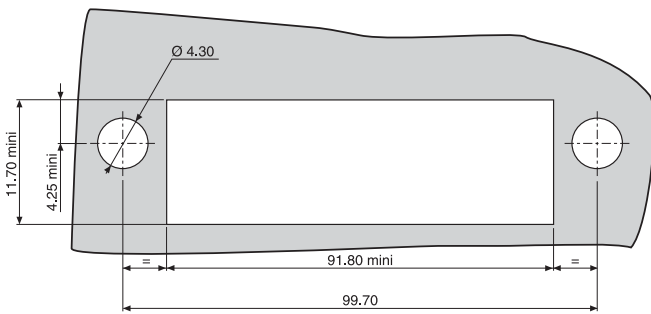
Board and panel preparation details

**Daughter board**



**Panel**

**Mother board**



PCB and panel connector wiring side view

**Tooling**

Tools	Suppliers	P/N
Crimp tools	ASTRO TOOL	TGV 101
	DANIELS	FT8
Turrets	ASTRO TOOL	TGV 201
	DANIELS	SH 462
Contact extraction tools	HYPERTAC	SD. 015 00 00 003