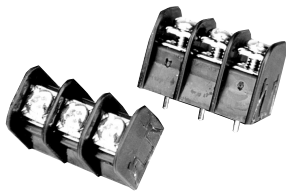


## 0.375" [9.53] Pitch, Series JC6

### JC6-P107-03



#### Material & Finish

**Housing Material**—Polypropylene

**Flammability**—UL94V-0

**Color**—Black

**Terminals**—Bright acid-tin over copper alloy

**Screws**—#6-32 steel, zinc plating with clear chromate coating. Wire clamping screws and binding head screws available.

#### Mechanical Properties

**Pitch (Terminal Spacing)**—  
0.375" [9.525]

**Recommended PCB Hole Dia.**—  
1.8mm [.073"]

#### Electrical Properties

**Ratings**—UL Class C 20 Amps, 300V  
UL Class D 5 Amps, 600V  
CSA Type B 20 Amps, 300V  
CSA Type C 20 Amps, 300V  
CSA Type D 5 Amps, 600V  
CSA Type E 20 Amps, 600V

**Wire Range**—12-22 AWG

#### Environmental Properties

**Operating Temperature Range**—  
105°C [221°F] max.

**Circuit Identification**—See page 179

#### Hardware Options

**TC9**—Safety cover, see page 174

**QC2x**—.250 Quick connects,  
see page 176

**QC4x**—.187 Quick connects,  
see page 176

**J6**—Jumpers, see page 177

**J7x**—Over-the-barrier jumpers,  
see page 177

**1437661-7**—Retaining clips,  
insulating turrets, see page 178

**1437651-2**—Wire clamp screw, steel,  
see page 178

**1437651-5**—Wire clamp screw, brass,  
see page 178

**1437651-8**—Binding head screw,  
steel, see page 178

**L03**—Binding head screw, stainless,  
see page 178

#### Ordering Information

# JC6 - P 1 07 - 06

**A** **B** **C** **D** **E**

#### **A** Series

JC6 = Dual-Barrier, 0.375" Centers

#### **B** Terminal Style

C = Non Feed Thru

E = Extended Circ. Bd.

F = Quick Connect, .187

P = Printed Circuit Pin (available with 1, 2 Block Style)

T = Solder Turret

Q = Quick Connect, .250

W = Solderless Wrap

#### **C** Block Style

1 = Flat, all positions filled

2 = Flat, end mounting ears (required for cover option)

3 = Insulating turret, end mounting ears with holes  
(required for cover option)

4 = Insulating turret, all positions filled

5 = Flat, open end with mounting bracket

6 = Flat, open end, mounting bracket, insulating turret

7 = Closed bottom, end mounting ears. (for C style  
terminal only)

#### **D** Screw Hardware

05 = Brass binding combo head screws

06 = Brass wire-clamp combo head screws

07 = Steel binding combo head screws

08 = Steel wire-clamp combo head screws (standard)

#### **E** No. of Circuits (Not positions)

02 through 25

**0.375" [9.53] Pitch, Series JC6 (Continued)**

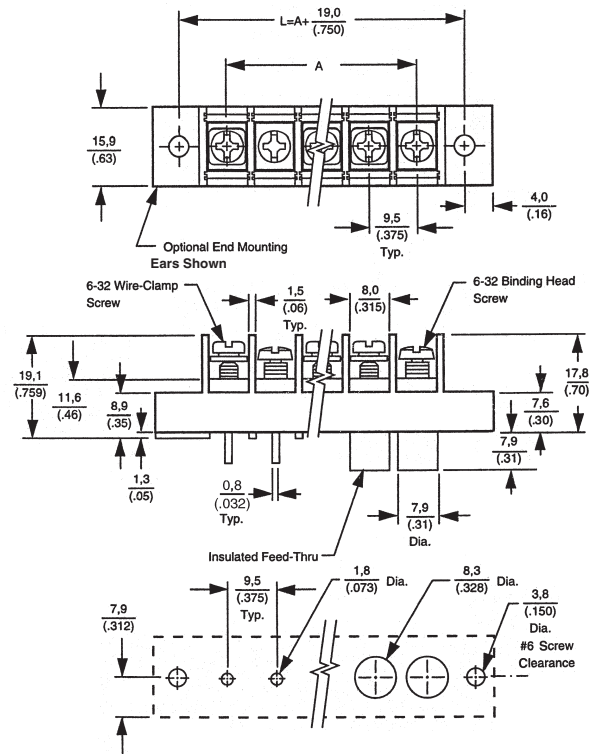
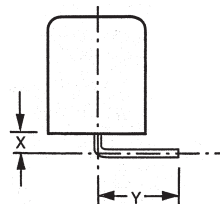
No. of Positions	Dim. A
2	0.325 [8.2]
2	0.375 [9.5]
3	0.750 [19.1]
4	1.125 [28.6]
5	1.500 [38.1]
6	1.875 [47.6]
7	2.250 [57.1]
8	2.625 [66.7]
9	3.000 [76.2]
10	3.375 [85.7]
11	3.750 [95.2]
12	4.125 [104.8]
13	4.500 [114.3]

No. of Positions	Dim. A
14	4.875 [123.8]
15	5.250 [133.3]
16	5.625 [142.9]
17	6.000 [152.4]
18	6.375 [161.9]
19	6.750 [171.45]
20	7.125 [180.98]
21	7.500 [190.5]
22	7.875 [200.03]
23	8.250 [209.55]
*24	8.625 [219.08]
*25	9.000 [228.60]

\* No mounting available

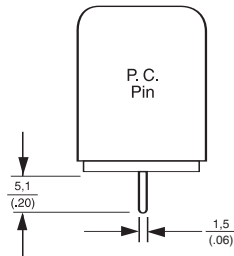
**Bend Options**

A variety of bend styles are available. Please consult Technical Support for details.

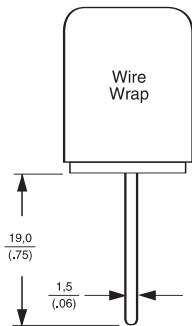


PRINTED CIRCUIT BOARD//MOUNTING PANEL LAYOUT

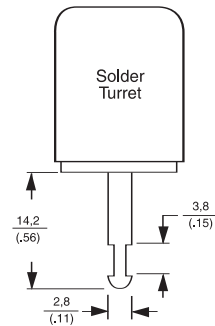
Available Block Styles: 1/2/5



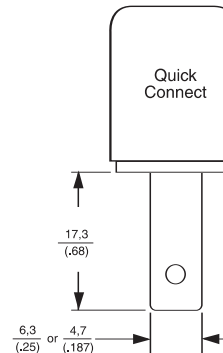
Available Block Styles: 2/3/4/5/6



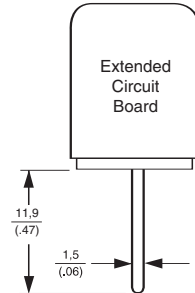
Available Block Styles: 2/3/4/5/6



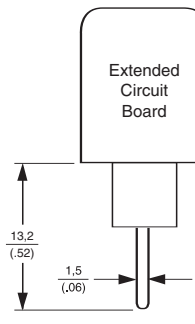
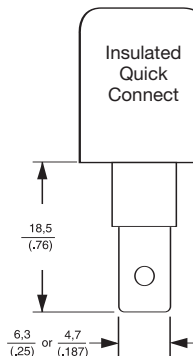
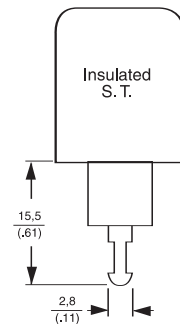
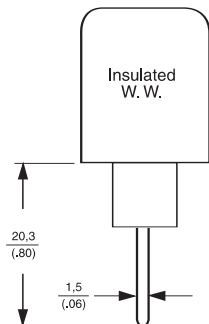
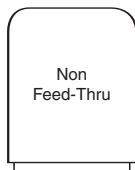
Available Block Styles: 2/3/4



Available Block Styles: 1/2/3/4/5/6



Available Block Styles: 7



LR30811 E54800