



Standard 4-Port Transfer Electromechanical Switches

7525 Series

These transfer switches combine a compact, lightweight assembly with high RF performance. This series features excellent VSWR and isolation from DC to 12.4, easy cabling, fast operation and high reliability.

They are designed for use in a variety of switching functions including matrices and tandem substitution. Typical installations include the interchanging of two antennas on two receivers or transmitters.

FEATURES:

Life: 1,000,000 Cycles

Weight: 14 oz. Nom.

Construction: Aluminum Body and Housing

Finish: Chemical Film per MIL-C-5541

RF Connectors: Type N Jack per MIL-C-39012

Switching Time: 25 ms Max.

Switching Action: Break-Before-Make

Actuating Voltage: 20-30 Vdc, 28 Vdc Nom.

Actuating Current: 160 mA Max @ 28 Vdc and 20° C.

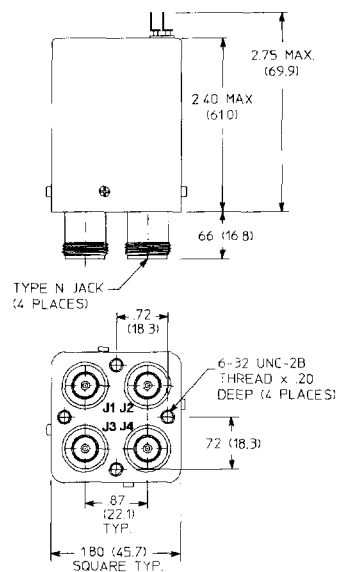
| PART NUMBER | FREQUENCY (GHz) | ACTUATION | AUX. CONTACTS |
|--------------|-----------------|-----------|---------------|
| 7525-6320-00 | DC - 12.4 | FAILSAFE | NO |
| 7525-6321-00 | | FAILSAFE | YES |

SPECIFICATIONS:

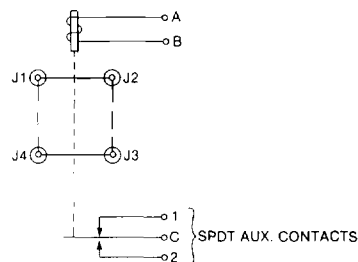
| FREQUENCY RANGE (GHz) | DC TO 4.0 | 4.0 TO 8.0 | 8.0 TO 12.4 |
|---------------------------|-----------|------------|-------------|
| VSWR (MAX.) | 1.3:1 | 1.4:1 | 1.5:1 |
| ISOLATION (NOM., dB) | 70 | 65 | 60 |
| INSERTION LOSS (MAX., dB) | 0.3 | 0.4 | 0.5 |
| CW POWER (MAX., WATTS) | 100 | 80 | 75 |

OPTIONS: (Contact Factory)

- Multi-Pin Power Connectors
- Special Finish or Marking
- Special Coil Voltages
- Arc Suppression Diodes
- Environmental Sealing
- Alternate Solder Terminals/ Locations
- Alternate Mounting Configurations
- TNC, BNC or SMA Connectors



SCHEMATIC
DE-ENERGIZED 1-2 3-4 CONNECTED (SOLID LINES)
ENERGIZED 1-4 2-3 CONNECTED (DOTTED LINES)



Specifications Subject to Change Without Notice.

M/A-COM Inc. ■ 1011 Pawtucket Boulevard, Lowell, MA 01853 USA

■ Telephone: 800-366-2266