

RECOMMENDED P.C.B. LAYOUT (T=1.6mm/2.0mm/2.4mm)

NOTES:

1. MATERIAL:

HOUSING: THERMAL PLASTIC, UL94V-0, COLOR: SEE SHEET2
 TERMINAL/PEG: COPPER ALLOY, THICKNESS=0.25MM

2. TERMINAL PLATING:

CONTACT AREA: (a) GOLD FLASH
 (b) 0.76 MICRON GOLD PLATED
 (c) 0.38 MICRON GOLD PLATED

SOLDER TAIL:

1.27 MICRON MIN. MATTE TIN PLATED

UNDER PLATE:

1.27 MICRON MIN. NICKEL PLATED

3. PEG PLATING:

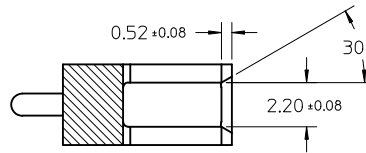
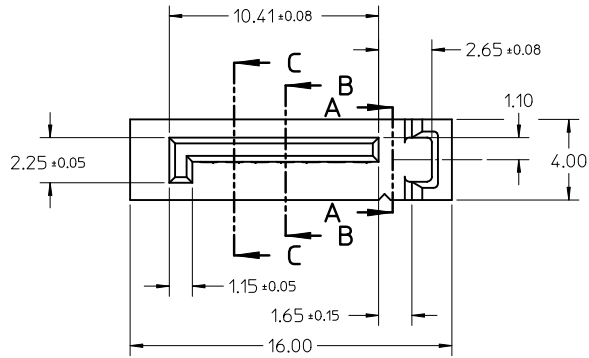
1.27 MICRON MIN. MATTE TIN PLATED OVERALL
 1.27 MICRON MIN. NICKEL UNDER PLATED

4. PACKAGING SPECIFICATION REFER TO PK-67491-001

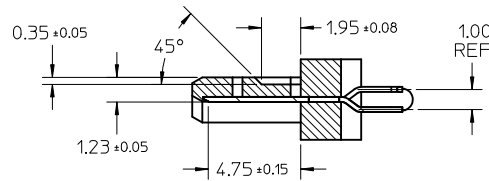
5. PRODUCT SPECIFICATION REFER TO PS-67491-001

6. MATING PART: 67489

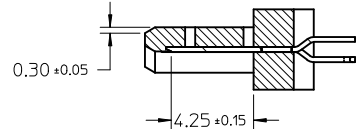
7. RECOMMENDED PROCESS: WAVE SOLDERING



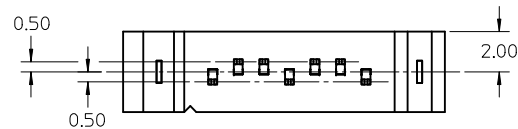
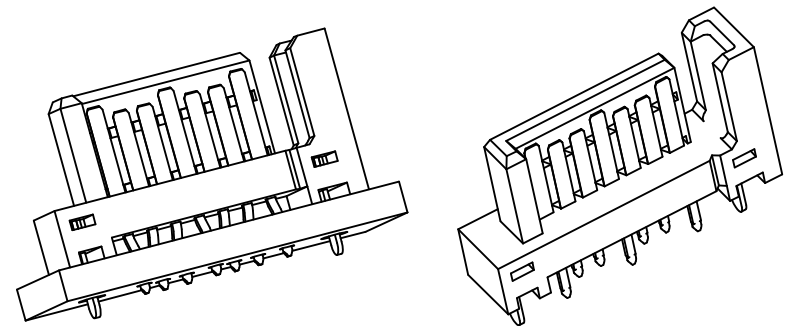
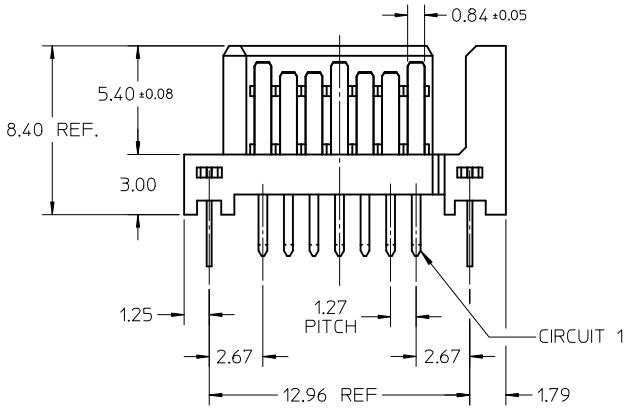
SECTION A-A



SECTION B-B



SECTION C-C



OBSOLETE PARTS EC NO: SH2011-0104 DRWNG: GLL CHKD: APPR: RZHANG REV	2010/10/22 2010/11/03	QUALITY SYMBOLS $F_A=0$ $F_B=0$ $F_C=0$	GENERAL TOLERANCES (UNLESS SPECIFIED)		DIMENSION STYLE MM ONLY		SCALE 4:1	DESIGN UNITS METRIC	THIRD ANGLE PROJECTION	
				mm	INCH	DRAWN BY GRATE MA	DATE 2004/02/02	TITLE 1.27MM HIGH SPEED PLUG VERTICAL TYPE		
				4 PLACES	± ---	± ---	CHECKED BY YA JUN	DATE 2004/02/02	MOLEX INCORPORATED	
				3 PLACES	± ---	± ---	APPROVED BY RZHANG	DATE 2010/11/03	DOCUMENT NO. SD-67491-001	SHEET NO. 1 OF 2
			2 PLACES	± 0.15	± ---	SEE CHART IN SHEET 2		THIS DRAWING CONTAINS INFORMATION THAT IS PROPRIETARY TO MOLEX INCORPORATED AND SHOULD NOT BE USED WITHOUT WRITTEN PERMISSION		
			1 PLACE	± 0.25	± ---	DRAFT WHERE APPLICABLE MUST REMAIN WITHIN DIMENSIONS				
			ANGULAR ± 3°							

	10	9	8	7	6	5	4	3	2	1
	P/N	PLATING TYPE	DIM "A"	DIM "B"	COLOR	SOLDE AREA PLATING				
F	67491-0020	SEE NOTE 2(a)	2.05	2.57	BLACK	PURE TIN MATTE FINISH				
	67491-0021	SEE NOTE 2(b)								
	67491-0022	SEE NOTE 2(c)								
	67491-0025	SEE NOTE 2(a)								
	67491-0026	SEE NOTE 2(b)								
67491-0027	SEE NOTE 2(c)	2.35								
E	67491-2020	SEE NOTE 2(a)	2.05	3.00	3.20	BLACK				
	67491-2021	SEE NOTE 2(b)								
	67491-2025	SEE NOTE 2(a)								
	67491-2027	SEE NOTE 2(c)								
	67491-3010	SEE NOTE 2(a)								
D	67491-3011	SEE NOTE 2(b)	3.00	3.20	BLACK					
	67491-3012	SEE NOTE 2(c)								
	67491-3110	SEE NOTE 2(a)								
	67491-3111	SEE NOTE 2(b)								
			3.00	3.20	BLUE PANTONE NO. 293C $\Delta E < 3$					

OBSOLETE PARTS EC NO: SH2011-0104 DRWNG: GLLI CHKD: APPR: RZHANG	2010/10/22 2010/11/03	DESCRIPTION REV	QUALITY SYMBOLS	GENERAL TOLERANCES (UNLESS SPECIFIED)	DIMENSION STYLE	SCALE	DESIGN UNITS	THIRD ANGLE PROJECTION
			$\nabla_F = 0$	mm INCH	MM ONLY	4:1	METRIC	
			$\nabla_E = 0$	4 PLACES ± --- ± ---	DRAWN BY DATE	TITLE 1.27MM HIGH SPEED PLUG VERTICAL TYPE		
			$\nabla_B = 0$	3 PLACES ± --- ± ---	GRATE MA 2004/02/02		CHECKED BY DATE	
	2 PLACES ± 0.15 ± ---	YA JUN 2004/02/02	APPROVED BY DATE	MOLEX INCORPORATED				
	1 PLACE ± 0.25 ± ---	RZHANG 2010/11/03	ANGULAR ± 3 °	MATERIAL NO.	DOCUMENT NO.	SHEET NO.		
DRAFT WHERE APPLICABLE MUST REMAIN WITHIN DIMENSIONS			SEE CHART	SD-67491-001		2 OF 2		
			SIZE A3	THIS DRAWING CONTAINS INFORMATION THAT IS PROPRIETARY TO MOLEX INCORPORATED AND SHOULD NOT BE USED WITHOUT WRITTEN PERMISSION				