

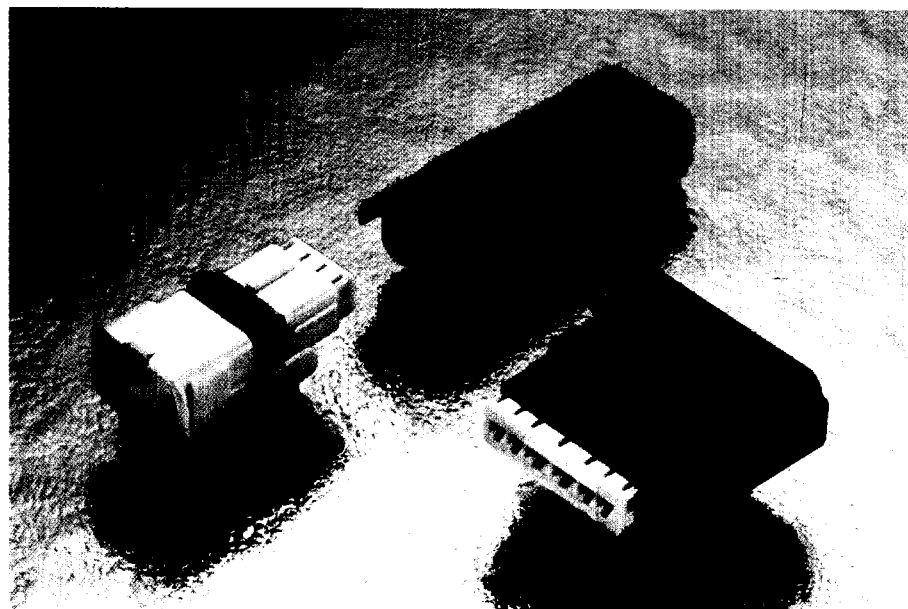
# Coupling connectors

## SICMA-2

### Sealed coupling housings for 1.5 mm + 2.8 mm terminals

#### Features

- 2 to 6 position housings available
- Single row 3.33 mm pitch for 2 to 5 position housings
- Reduced size sealed housings
- Female part can be used as an aggregate housing
- Circumferential interface seal on female housing
- Rear sealing ensured by a pre-mounted grommet
- Pre-assembled front grids support blade terminal guiding and mating
- Terminal position assurance (T.P.A.)
- GO-NO-GO housing locking principle
- Mechanical polarization
- Several colour codings available



Part Numbers	No. of Position	Terminal size	Type	Colour
211 PC022S0009	2	1.5 mm	Female housing	Black
211 PC022S6009	2	1.5 mm	Female housing	Blue
211 PC022S8009	2	1.5 mm	Female housing	Grey
211 PC022S4009	2	1.5 mm	Female housing	Yellow
211 PC022S5009	2	1.5 mm	Female housing	Green
211 PC022S1009	2	1.5 mm	Female housing	Brown
211 PL022S0009	2	1.5 mm	Male housing	Black
211 PL022S6009	2	1.5 mm	Male housing	Blue
211 PL022S8009	2	1.5 mm	Male housing	Grey
211 PL022S4009	2	1.5 mm	Male housing	Yellow
211 PL022S5009	2	1.5 mm	Male housing	Green
211 PL022S1009	2	1.5 mm	Male housing	Brown
211 PC032S0009	3	1.5 mm	Female housing	Black
211 PC032S6009	3	1.5 mm	Female housing	Blue
211 PC032S8009	3	1.5 mm	Female housing	Grey
211 PC032S4009	3	1.5 mm	Female housing	Yellow
211 PC032S5009	3	1.5 mm	Female housing	Green
211 PC032S1009	3	1.5 mm	Female housing	Brown
211 PL032S0009	3	1.5 mm	Male housing	Black
211 PL032S6009	3	1.5 mm	Male housing	Blue
211 PL032S8009	3	1.5 mm	Male housing	Grey
211 PL032S4009	3	1.5 mm	Male housing	Yellow
211 PL032S5009	3	1.5 mm	Male housing	Green
211 PL032S1009	3	1.5 mm	Male housing	Brown
211 PC042S0009	4	1.5 mm	Female housing	Black
211 PC042S6009	4	1.5 mm	Female housing	Blue
211 PC042S8009	4	1.5 mm	Female housing	Grey
211 PL042S0009	4	1.5 mm	Male housing	Black
211 PL042S6009	4	1.5 mm	Male housing	Blue
211 PL042S8009	4	1.5 mm	Male housing	Grey

# Coupling connectors

## SICMA-2

Part Numbers	No. of Position	Terminal size	Type	Colour
211 PC052S0009	5	1.5 mm	Female housing	Black
211 PC052S6009	5	1.5 mm	Female housing	Blue
211 PC052S8009	5	1.5 mm	Female housing	Grey
211 PL052S0009	5	1.5 mm	Male housing	Black
211 PL052S6009	5	1.5 mm	Male housing	Blue
211 PL052S8009	5	1.5 mm	Male housing	Grey
211 PC062S0009	6	4 x [1.5 mm] + 2 x [2.8 mm]	Female housing	Black
211 PC062S6009	6	4 x [1.5 mm] + 2 x [2.8 mm]	Female housing	Blue
211 PC062S8009	6	4 x [1.5 mm] + 2 x [2.8 mm]	Female housing	Grey
211 PL062S0009	6	4 x [1.5 mm] + 2 x [2.8 mm]	Male housing	Black
211 PL062S6009	6	4 x [1.5 mm] + 2 x [2.8 mm]	Male housing	Blue
211 PL062S8009	6	4 x [1.5 mm] + 2 x [2.8 mm]	Male housing	Grey

### Performance characteristics

- Temperature range :  
from -40°C to +125°C
- Contact retention force :  
> 100 N for 1.5 mm terminals  
> 130 N for 2.8 mm terminals
- Contact insertion force :  
< 12 N for 1.5 mm terminals  
< 15 N for 2.8 mm terminals
- Sealing protection : IP 68
- Acceptable wire range :  
0.6 mm<sup>2</sup> to 2 mm<sup>2</sup> for 1.5 mm terminals  
0.6 mm<sup>2</sup> to 4 mm<sup>2</sup> for 2.8 mm terminals
- Housing locking strength : < 80 N

### Construction

- Housing material : PBT
- Interfacial seal : Silicone
- Rear grommet seal : Silicone

### Tooling

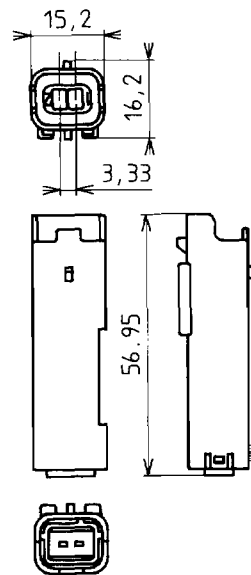
- T.P.A. removal tool : 210S040
- Terminal removal tool
  - Female terminal : 210S048
  - Male terminal : 210S049

### Connector compatibility

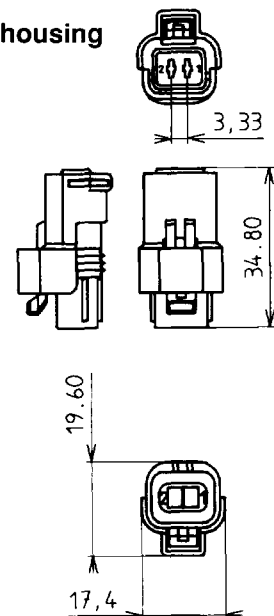
- Usable terminals :
  - Sicma-2 1.5 mm female terminals
  - Sicma-2 1.5 mm male terminals
  - Sicma-2 2.8 mm female terminals
  - Sicma-2 2.8 mm male terminals
  - Sicma-3 1.5 mm female terminals
  - Sicma-3 1.5 mm male terminals
  - Sicma-3 2.8 mm female terminals
  - Sicma-3 2.8 mm male terminals

### Dimensional characteristics

#### 2 way male housing



#### 2 way female housing

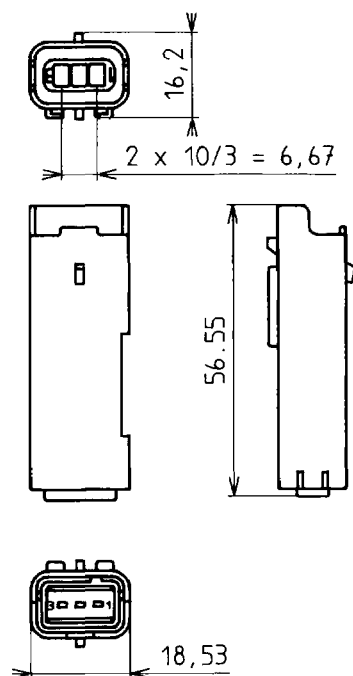


# Coupling connectors

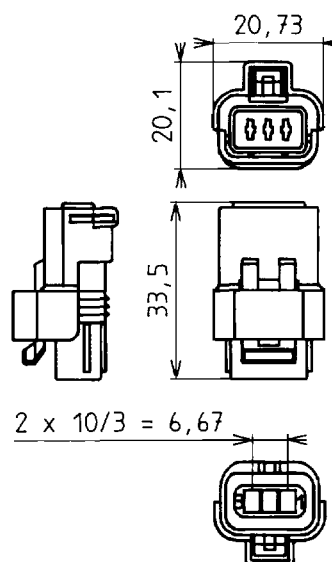
## SICMA-2

### Dimensional characteristics

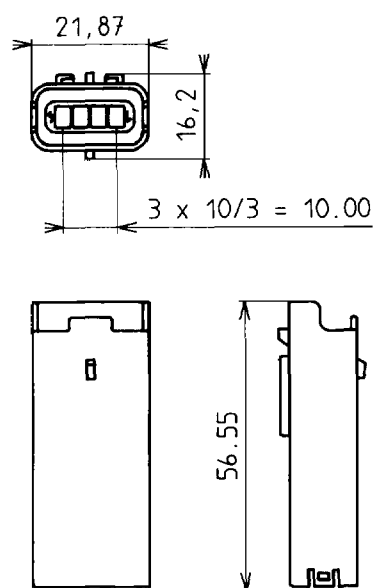
#### 3 way male housing



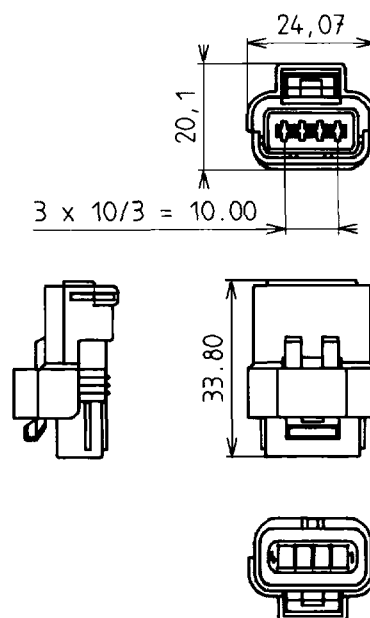
#### 3 way female housing



#### 4 way male housing



#### 4 way female housing

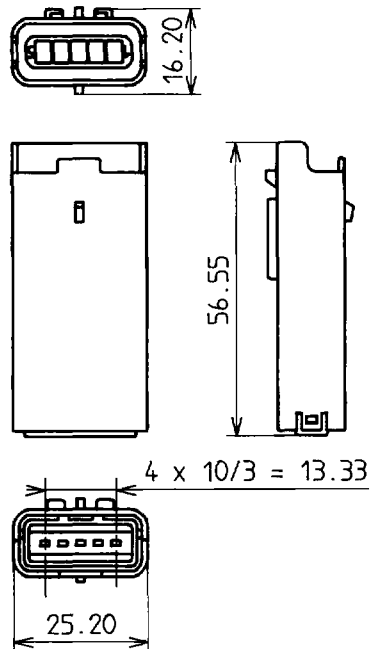


# Coupling connectors

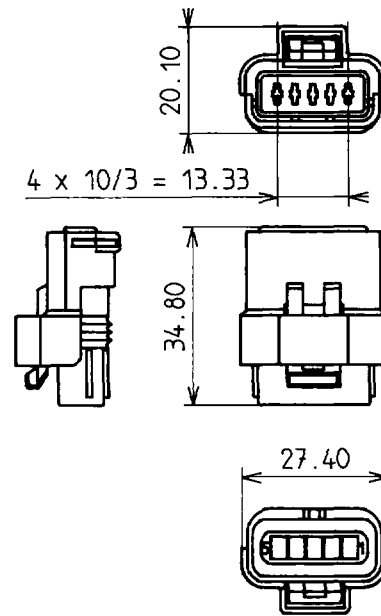
## SICMA-2

### Dimensional characteristics

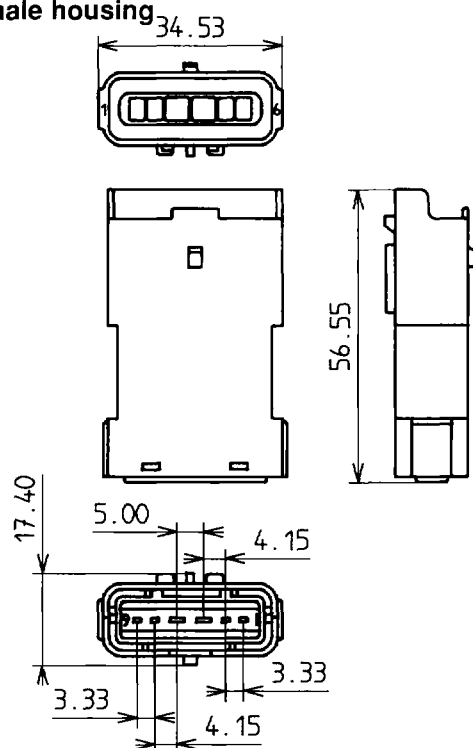
#### 5 way male housing



#### 5 way female housing



#### 6 way male housing



#### 6 way female housing

