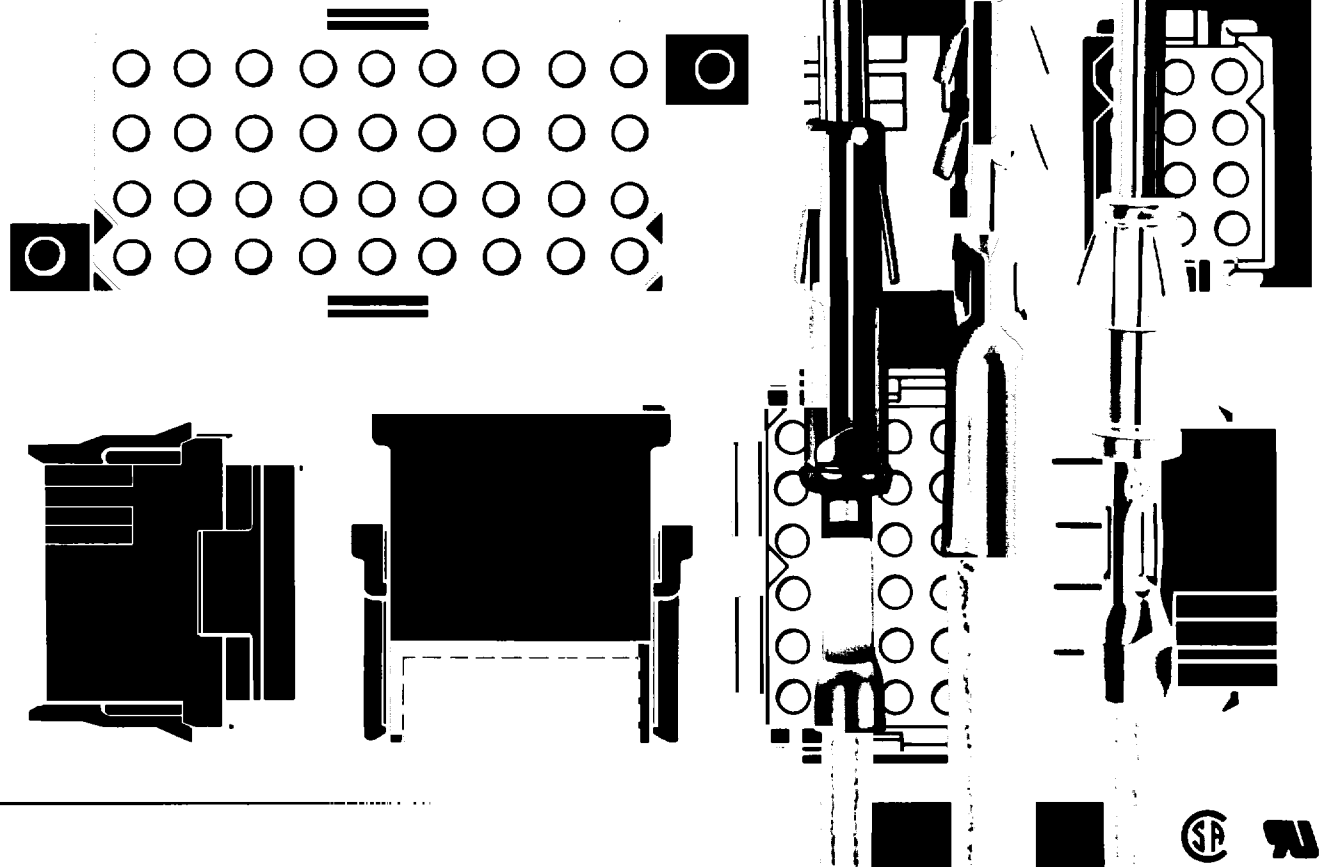


QIKMATE Connectors



The versatile QIKMATE Thermoplastic Connectors offer economy to meet the constant demands for more cost-effective interconnection techniques. Significant benefits are readily achieved, while minimizing performance-to-cost trade-offs, by the options available in the high-quality and dependable Trim Trio Power Contacts and Signal Contacts for Subminiature Coaxial Cables and Twisted Pair Wires.

QIKMATE Connectors are available in 2, 3, 4, 6, 9, 12, 15, 18, 24 and 36 positions.

SELF-MOUNTING

The receptacle quickly snaps into a cut-out in the mounting panel and is firmly locked into place through the action of integral molded features without the need for additional hardware. The receptacle will accommodate panel thicknesses of .030 to .090 inches. Removal is accomplished simply by depressing the latches on the receptacle at the rear of the panel.

ERROR-FREE MATING — QUICK DISCONNECTS

The connectors are fully polarized for error-free mating. Engaging of the plug and receptacle activates latches, which then firmly secure the mating elements.

PIN PROTECTION

Prevention of accidental damage to the pins is inherent in the "skirted" design of *For complete information on the QIKMATE connector line, request catalog CG 53791.*

the plug. Pin or socket contacts may be intermixed in the plug and receptacle, but it is preferable to install the pins in the plug to take advantage of the integral pin protection provided.

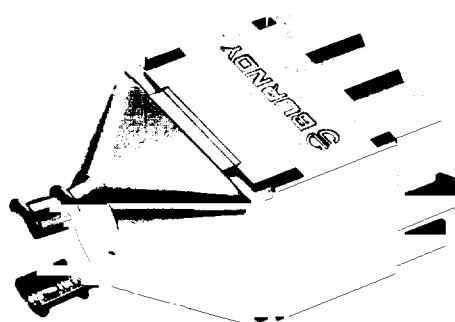
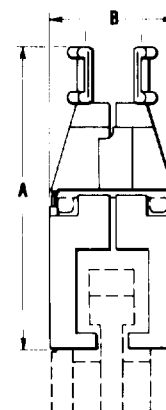
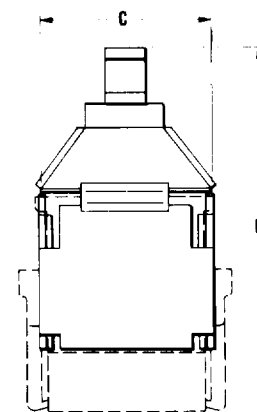
The Burndy QIKMATE Connector uses the Trim Trio Contacts. Choose from screw-machined power contacts, strip-formed power contacts, and signal contacts for Subminiature Coaxial Cables or Twisted Pair Wires. Any of these contacts can be used interchangeably in any contact position in either half of the connector. In addition, the contacts may also be used in all connector types in the Trim Trio Interconnection System, including Miniature Round Connectors and the Hyfen Rectangular Connectors. Consult your Burndy representative for additional catalog information on these product lines.

Operating Temperature	-55°C to +105°C
Insulation Resistance at 500VDC	5000 megohms
Test Potential	2000 VAC, 60HZ
Contact Retention Force	10 lbs. minimum after 10 insertions/extraction
Salt Spray	per MIL-STD method 101, condition B
Humidity	240 hours at 40°C, 90-95% RH
Vibrations	per MIL-STD method 204
Shock	per MIL-STD method 207

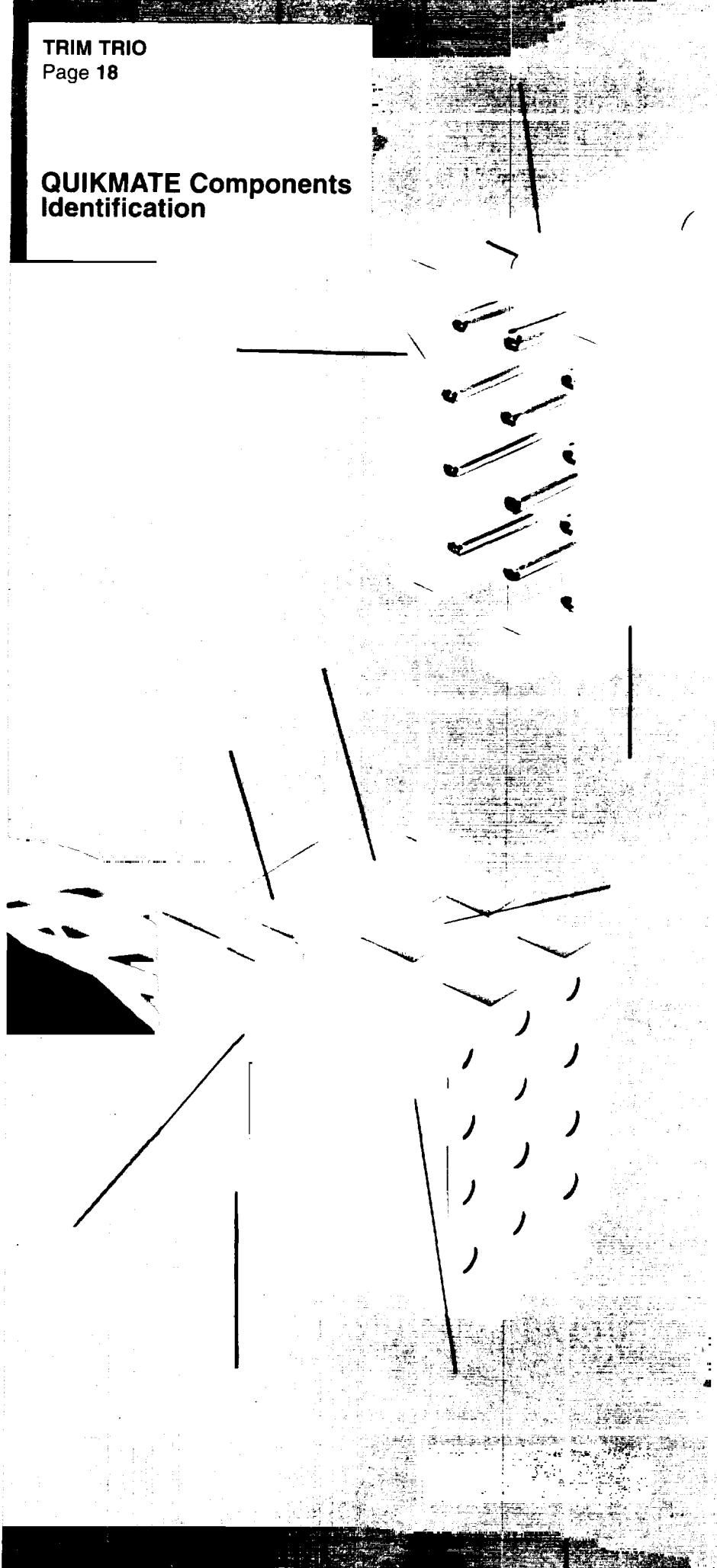
UL approved — File No. E31151
CSA Certified — File No. LR39151

QIKMATE Strain Relief Hoods

QIKMATE Contact Position	Catalog No.	Wire Bundle (Max.)	Recommended UNIRAP Cable tie	Dimensions in Inches			
				A	B	C	D(max.)
2	SMS2H-1	.33 (8.4)	TF-4	1.82 (46.2)	.66 (16.7)	.42 (10.6)	2.22 (56.3)
3	SMS3H-1	.33 (8.4)	TF-4	1.82 (46.2)	.76 (19.3)	.42 (10.6)	2.22 (56.3)
4	SMS4H-1	.39 (9.9)	TF-4	1.82 (46.2)	.96 (24.3)	.42 (10.6)	2.22 (56.3)
6	SMS6H-1	.32 (8.1)	TF-4	1.82 (46.2)	.76 (19.3)	.62 (15.7)	2.22 (56.3)
9	SMS9H-1	.36 (9.1)	TF-5	1.86 (45.2)	.76 (19.3)	.82 (20.8)	2.18 (55.3)
12	SMS12H-1	.400 (10.2)	TF-5	1.78 (45.2)	.76 (19.3)	1.02 (25.9)	2.18 (55.3)
15	SMS15H-1	.435 (10.9)	TF-5	1.98 (50.2)	.76 (19.3)	1.22 (30.9)	2.38 (60.4)
18	SMS18H-1	.465 (11.7)	TF-5	1.98 (50.2)	.76 (19.3)	1.42 (36.0)	2.38 (60.4)
24	SMS24H-1	.50 (12.7)	TF-5	1.99 (50.5)	.96 (24.3)	1.42 (36.0)	2.39 (60.7)
36	SMS364-1	.62 (15.7)	TF-5	2.28 (57.9)	1.96 (49.7)	1.02 (25.9)	2.68 (68.0)



**QUIKMATE Components
Identification**



1. Positive housing retention.

2. Forward Stop.

3. Panel stabilizing boss.

4. Positive connector polarization.

5. Retaining boss.

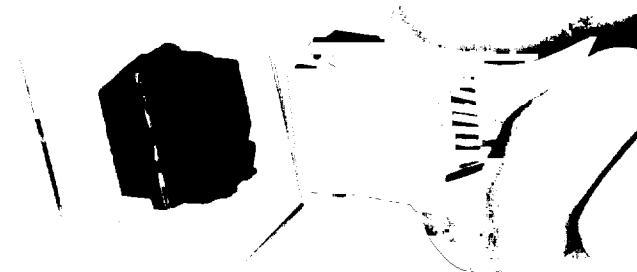
6. Retaining latch for positive locking.

7. No. 1 contact identification.

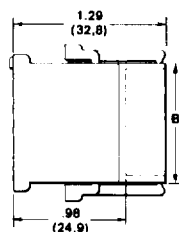
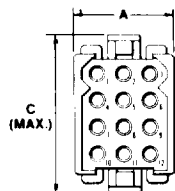
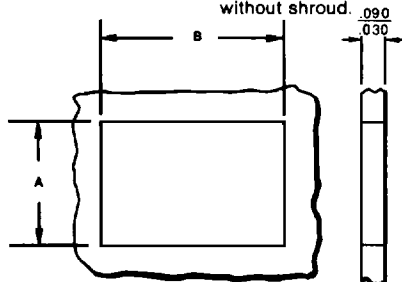
8. Positive pin protection skirt.

QIKMATE Self-Mounting Connector

Available in 2, 3, 4, 6, 9, 12, 15, 18, 24 and 36 contact positions. Receptacles snap-lock into panel cutouts and plugs quick-connect and quick-disconnect with positive retention locks. Plugs also feature pin-protection skirt and positive polarization. Qikmate plugs are available with accessory stainrelief hoods.



Maximum panel thickness with shroud .062 max. without shroud .090



QIKMATE PLUGS

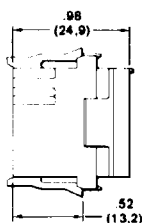
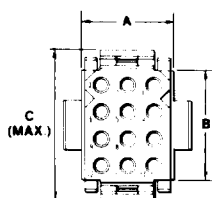
Number of Contacts	Catalog No.	A	B	C (Max.)
2	SMS2P-1	.59 (15.0)	.33 (8.4)	.70 (17.8)
3	SMS3P-1	.73 (18.5)	.33 (8.4)	.70 (17.8)
4	SMS4P-1	.93 (23.6)	.33 (8.4)	.70 (17.8)
6	SMS6P-1	.73 (18.5)	.53 (13.5)	.90 (22.9)
9	SMS9P-1	.73 (18.5)	.73 (18.5)	1.10 (27.9)
12	SMS12P-1	.73 (18.5)	.93 (23.6)	1.30 (33.0)
15	SMS15P-1	.73 (18.5)	1.13 (28.7)	1.50 (38.1)
18	SMS18P-1	.73 (18.5)	1.33 (33.8)	1.70 (43.2)
24	SMS24P-1	.93 (23.6)	1.33 (33.8)	1.70 (43.2)
36	SMS36P-1	1.93 (49.0)	.93 (23.6)	1.30 (33.0)

PANEL CUTOUT DIMENSIONS

RECEPTACLE CONNECTOR CATALOG NUMBER	DIM. A	DIM. B
SMS2R-1	.455	.450
SMS3R-1	.455	.650
SMS4R-1	.455	.850
SMS6R-1	.655	.650
SMS9R-1	.655	.850
SMS12R-1	.655	1.050
SMS15R-1	.655	1.250
SMS18R-1	.655	1.450
SMS24R-1	.855	1.450
SMS36R-1	1.050	1.855

COLOR TABLE

—	BLACK
A	NATURAL (WHITE)
B	BLUE
G	GREEN
R	RED
Y	YELLOW



QIKMATE RECEPTACLES

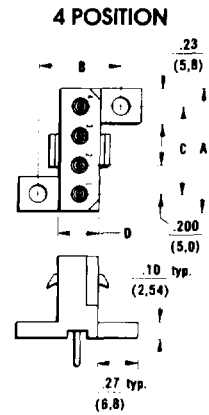
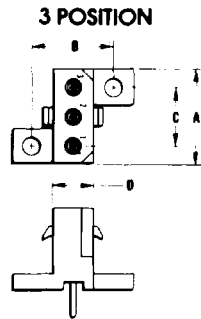
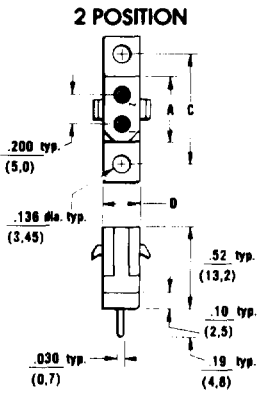
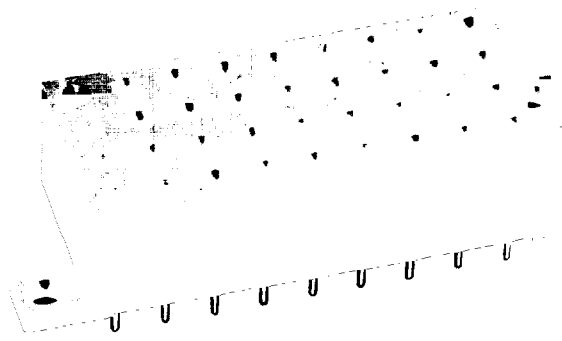
Number of Contacts	Catalog No.	A	B	C (Max.)
2	SMS2R-1	.43 (10.9)	.23 (5.8)	.60 (15.2)
3	SMS3R-1	.63 (16.0)	.23 (5.8)	.60 (15.2)
4	SMS4R-1	.83 (21.1)	.23 (5.8)	.60 (15.2)
6	SMS6R-1	.63 (16.0)	.43 (10.9)	.80 (20.3)
9 *	SMS9R-1	.63 (16.0)	.63 (16.0)	1.00 (25.4)
12	SMS12R-1	.63 (16.0)	.83 (21.1)	1.20 (30.5)
15	SMS15R-1	.63 (16.0)	1.03 (26.2)	1.40 (35.6)
18	SMS18R-1	.63 (16.0)	1.23 (31.2)	1.60 (40.6)
24	SMS24R-1	.83 (21.1)	1.23 (31.2)	1.60 (40.6)
36	SMS36R-1	1.83 (46.5)	.83 (21.1)	1.20 (30.5)

How to order

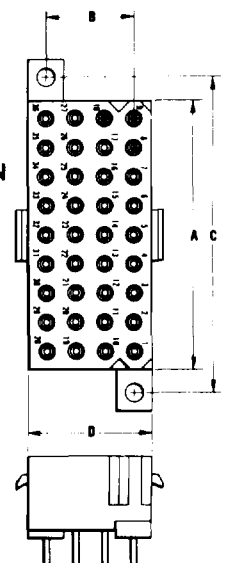
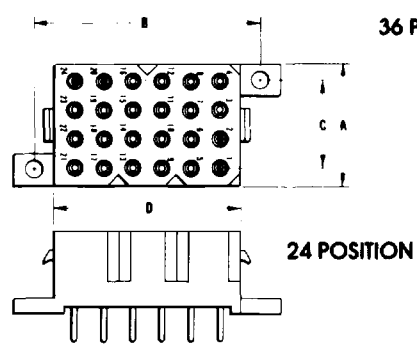
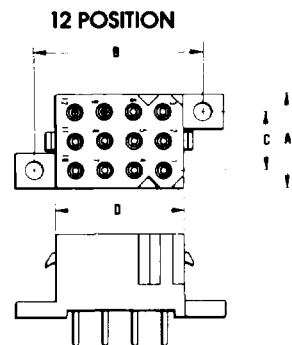
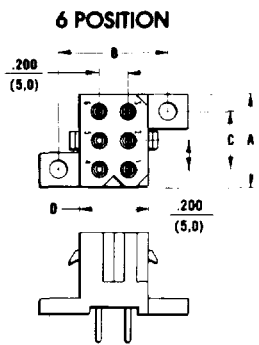
Qikmate Rectangular Connector _____
 Contact Positions _____
 Receptacle (R) Plug (P) _____
 Color _____
 (See table)

QIKMATE Boardmount Connectors

Receptacle blocks are available with or without mounting flanges for auxiliary hardware (mechanically fastened to PC board and then wave or dip soldered.) Plug connectors are standard Qikmate type. Qikmate Boardmount connectors feature positive, quick connect/quick disconnect latches and error-free polarization. Housings are supplied pre-assembled with either pin or socket contact.



Available in, 2, 3, 4, 6, 9*, 12, 15*, 18*, 24 and 36 position
*supplied with pin contacts only

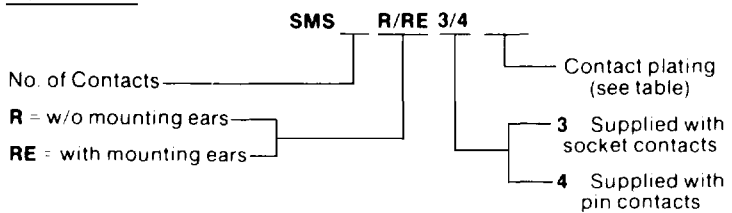


Number of Contacts	Catalog Number	A	B	C	D
2	SMS2RE-3/4	.43 (10.9)	(Not applicable)	.75 (19.1)	.23 (5.8)
3	SMS3RE-3/4	.63 (16.0)	.55 (14.0)	.40 (10.2)	.23 (5.8)
4	SMS4RE-3/4	.83 (21.1)	.55 (14.0)	.60 (15.2)	.23 (5.8)
6	SMS6RE-3/4	.63 (16.0)	.75 (19.0)	.40 (10.2)	.43 (10.9)
12	SMS12RE-3/4	.63 (16.0)	1.15 (29.2)	.40 (10.2)	.83 (21.1)
24	SMS24RE-3/4	.83 (21.1)	1.55 (39.4)	.60 (15.2)	1.23 (31.2)
36	SMS36RE-3/4	1.83 (46.5)	.60 (15.2)	2.15 (54.6)	.83 (21.1)

NOTE: All BOARDMOUNT Housings except 2, 3 and 4 position, are available w/o mounting ears.

All Dimensions: in. (mm)

How to order



PLATING TABLE		
PLATING SUFFIX	DESCRIPTION	
TK6	TIN-ALLOY PREPLATED	STO PLATING
D70	TYPE D70 PER BURNDY SPEC F450 000005 MIN. GOLD OVER 000075 MIN. NICKEL	
S2	000050 MIN. GOLD OVER 000200 MIN. NICKEL	SELECTIVE PLATING
S4	000050 MIN. GOLD OVER 000075 MIN. NICKEL	
S6	000030 MIN. GOLD OVER 000075 MIN. NICKEL	