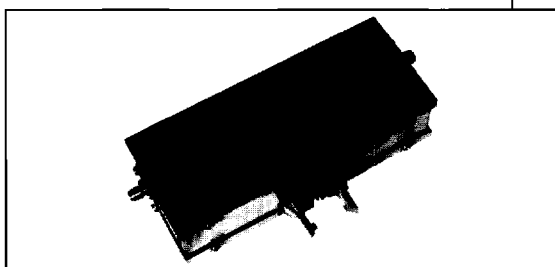


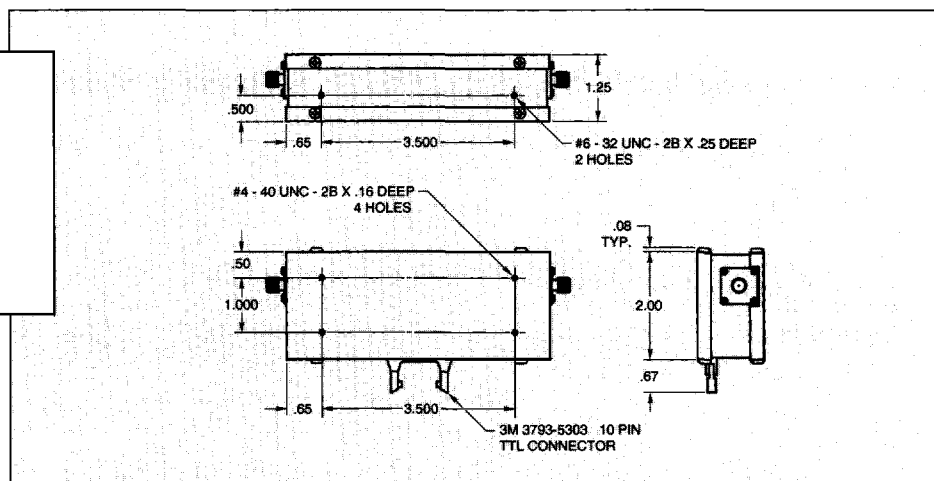
*Wide Band!*

**NEW!**

*solid-State!*



The PA-2.5 series 127 dB solid-state programmable attenuators have been designed to combine the longevity and high accuracy of solid-state switching with high speed and broad dynamic range. The attenuators are currently the only electronically switched step attenuators that cover all of the frequencies used in wireless communications services (from 400 MHz to 2.5 GHz), including the industrial, scientific and medical band frequencies at 2.4 GHz.



Specifications	PA-2.5-127-1S-5V-TTL	Specifications	PA-2.5-127-1S-5V-TTL
<b>Attenuation</b>	0-127 dB in 1dB steps	<b>RF Input Power</b>	+10 dBm
<b>Attenuation Steps</b>	1, 2, 4, 8, 16, 32 and 64 dB	<b>Switching Speed</b>	2 microseconds Max.
<b>Impedance</b>	50 Ohms	<b>DC Supply</b>	+5Vdc @ mA Max.
<b>Frequency Range</b>	400-2500MHz	<b>Operating Temperature Range</b>	0 to +70° C
<b>Accuracy</b> Max. accumulated error ± 0.5 dB or 2%	1, 2, 4, and 8 dB ± 0.25 dB 16 & 32dB, ± 0.35 dB 64 dB, ± 0.50 dB	<b>Insertion Loss</b>	5 dB Max. @ 1 GHz 7.5 dB Max. @ 2.5 GHz
<b>RF Connectors</b>	SMA female	<b>DC/Control Connectors</b>	10 Pin TTL Connector 3M 3793-5303
<b>Max. VSWR</b>	1.4:1 Max. to 1500 MHz 1.5:1 Max. to 2500 MHz	<b>Programming (7 lines)</b>	TTL Low for "0" Setting TTL High for pad setting

*Additional NEW Programmables on page 18!!*