

SERIES 69

.325" PCB Tri-Barrier Terminal Strip

Description

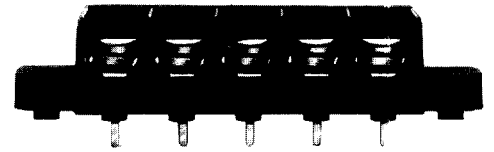
The series 69, tri-barrier PC terminal strip is one of our lowest profile products and our smallest product which uses the #6-32 screw. The product series is available in both vertical and horizontal configurations.

The terminal block can be configured for maximum 14 or 12 AWG wires and up to 20 Amps.

Made in the USA, all Beau terminal blocks embody the highest quality standards in the industry-using the finest materials and world class manufacturing processes. They meet or exceed all applicable industry standards.

Features

- **Low profile and durable**, the series 69 terminal block is only .50" high and uses the popular #6-32 screw.
- **Molded to exact length**, with no ugly saw cuts, Beau terminal strips make your products look more professional. The terminal block is the one component that your customer is sure to see.
- **Wide variety of options.** Our broad range of screw, terminal, hardware and mounting options allows us to save you assembly costs and improve interconnect performance.



PRODUCT RATINGS

#6-32 PAN HEAD SCREW

UL	Class B	15 Amps @ 300 V	14 AWG
	Class C	15 Amps @ 150 V	14 AWG
	Class C ltd.	10 Amps @ 300 V	14 AWG
CSA	Class B	15 Amps @ 300 V	14 AWG
	Class C	15 Amps @ 150 V	14 AWG
	Class D	10 Amps @ 300 V	14 AWG

#6-32 WIRE CLAMP SCREW

UL	Class B	20 Amps @ 300 V	12 AWG
	Class C	20 Amps @ 150 V	12 AWG
	Class C ltd.	10 Amps @ 300 V	12 AWG
CSA	Class B	15 Amps @ 300 V	14 AWG
	Class C	15 Amps @ 150 V	14 AWG
	Class D	10 Amps @ 300 V	14 AWG

TECHNICAL SPECIFICATIONS

ELECTRICAL

DWV	8500 VDC
IR	>5000 Megohms

MECHANICAL

Tightening torque	7 in.-lbs.
Maximum torque	8 in.-lbs.
Wire strip length	5/16"
Wire range	12 to 22 AWG

ENVIRONMENTAL

Continuous Use Temp	
RTI electrical	110°C
RTI mechanical w/o impact	110°C

OPTIONS

-45-50	Clamp screw/slotted
-50	Clamp washer, phillips/slotted screw
-58	No screws, barrier only
-59	Screws supplied unassembled
-C	No mounting ends
-V	130°C insulator
-W	Without standoff pads

APPROVALS

UL	File No. E48521
	Guide No. XCFR2
CSA	File No. 025562

MATERIALS

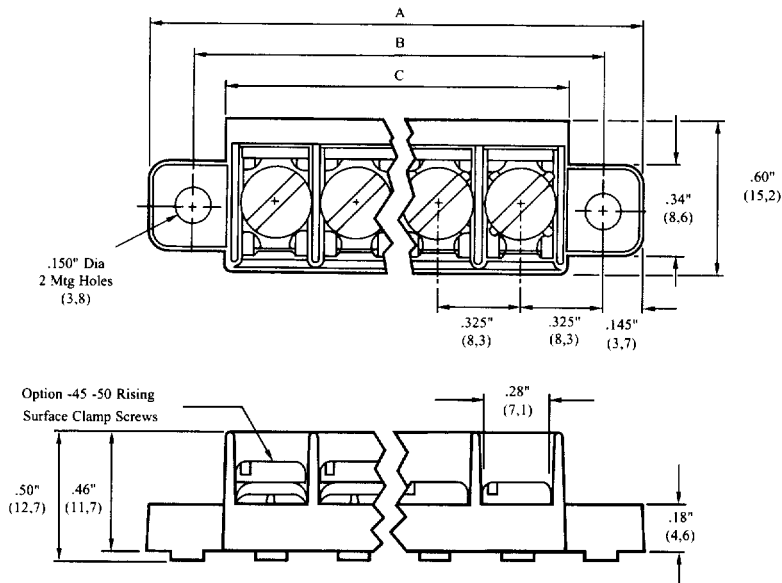
Insulator	Thermoplastic, UL94V-0, black
Terminal	Brass, tin-lead plate
Screws	#6-32, phillips/slotted, brass, nickel plate

HOW TO ORDER

6	9	X	X	X	X
SERIES	TERMINAL STYLE	NO. OF POLES	OPTIONS		
	157	2 to 30	(Dash #s above and opposite page)		
	8				

*Consult factory for combinations of screw options.

SERIES 69

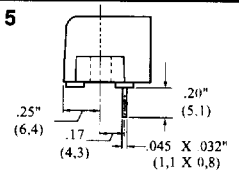


TERMINAL STYLES

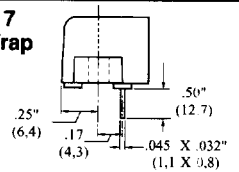
STYLE 1
No PC
Terminal



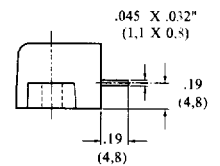
STYLE 5
PC



STYLE 7
Wire Wrap



STYLE 8
Right
Angle



No. of Circuits	A		B		C	
	in.	mm	in.	mm	in.	mm
2	1.27	31,2	.98	24,9	.71	18,0
3	1.59	40,4	1.30	33,0	1.03	26,2
4	1.92	48,8	1.63	41,4	1.36	34,5
5	2.24	56,9	1.95	49,5	1.68	42,7
6	2.57	65,3	2.28	57,9	2.01	51,1
7	2.89	73,4	2.60	66,0	2.33	59,2
8	3.22	81,8	2.93	74,4	2.66	67,6
9	3.54	89,9	3.25	82,6	2.98	75,7
10	3.87	98,3	3.58	90,9	3.31	84,1
11	4.19	106	3.90	99,1	3.63	92,2
12	4.52	115	4.23	107	3.96	101
13	4.84	123	4.55	116	4.28	109
14	5.17	131	4.88	124	4.61	117
15	5.49	139	5.20	132	4.93	125
16	5.82	148	5.53	140	5.26	134
17	6.14	156	5.85	149	5.58	142
18	6.47	164	6.18	157	5.91	150
19	6.79	172	6.50	165	6.23	159
20	7.12	181	6.83	173	6.56	167
21	7.44	189	7.15	182	6.88	175
22	7.77	197	7.48	190	7.21	183
23	8.09	205	7.80	198	7.53	191
24	8.42	214	8.13	207	7.86	200
25	8.74	222	8.45	215	8.18	208
26	9.07	230	8.78	223	8.51	216
27	9.39	239	9.10	231	8.83	224
28	9.72	247	9.43	240	9.16	233
29	10.04	255	9.75	248	9.48	241
30	10.37	263	10.08	256	9.81	249