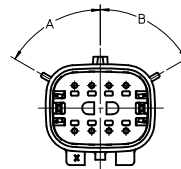
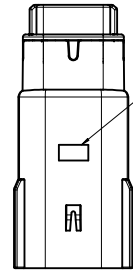


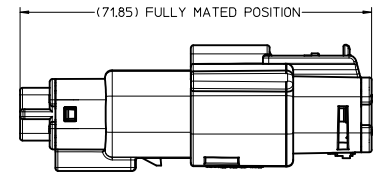
ASSEMBLY PART NUMBER	COLOR	KEYING OPTION	DIMENSIONS		CAVITY TYPE & STATUS (X = PLUGGED)															
			A	B	1	2	3	4	5	6	7	8								
33482-0801	BLACK	A	60	60																
33482-0802	LT.GRAY	B	25	60																
33482-0803	BROWN	C	60	25																
33482-0804	GREEN	D	25	25																
33482-0805	CUSTOM	TBD																		
33482-0806	BLACK	A	60	60									X							
33482-0807	LT.GRAY	B	25	60									X							
33482-0808	BROWN	C	60	25									X							
33482-0809	GREEN	D	25	25									X							
33482-0810	CUSTOM	TBD											X							
33482-0811	BLACK	A	60	60								X	X							
33482-0812	LT.GRAY	B	25	60								X	X							
33482-0813	BROWN	C	60	25								X	X							
33482-0814	GREEN	D	25	25								X	X							
33482-0815	CUSTOM	TBD										X	X							
33482-0816	BLACK	A	60	60	X							X	X							
33482-0817	LT.GRAY	B	25	60	X							X	X							
33482-0818	BROWN	C	60	25	X							X	X							
33482-0819	GREEN	D	25	25	X							X	X							
33482-0820	CUSTOM	TBD										X	X							
33482-0821	BLACK	A	60	60	X							X	X							X
33482-0822	LT.GRAY	B	25	60	X							X	X							X
33482-0823	BROWN	C	60	25	X							X	X							X
33482-0824	GREEN	D	25	25	X							X	X							X
33482-0825	CUSTOM	TBD										X	X							X
33482-0826	BLACK	A	60	60	X	X	X							X	X	X				X
33482-0827	BLACK	A	60	60																X
33482-0828	BLACK	A	60	60				X						X						X
33482-0829	BLACK	A	60	60			X	X	X	X	X	X	X	X	X	X				X
33482-0830	BLACK	A	60	60																X
33482-0831	BLACK	A	60	60				X						X	X					X
33482-0832	BLACK	A	60	60										X	X					X
33482-0833	BLACK	A	60	60	X			X	X	X	X	X	X	X	X	X				X
33482-0834	BLACK	A	60	60	X	X	X	X	X	X	X	X	X	X	X	X				X
33482-0835	BLACK	A	60	60																X
33482-0836	BLACK	A	60	60			X	X						X	X					X
33482-0837	BLACK	A	60	60	X				X					X	X					X
33482-0838	BLACK	A	60	60			X	X						X	X	X				X
33482-0839	LT.GRAY	B	25	60																X



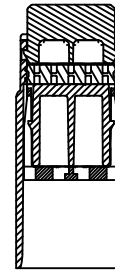
KEYING OPTION  
SEE TABLE SCALE 2:1



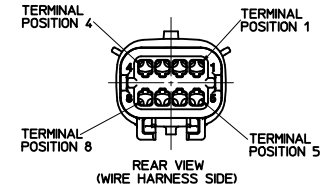
OPTIONAL TRACEABILITY  
INFORMATION LOCATED IN  
THIS AREA



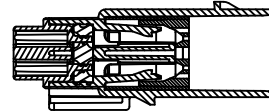
SCALE 1:1



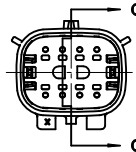
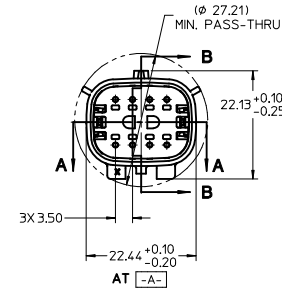
SECTION A-A



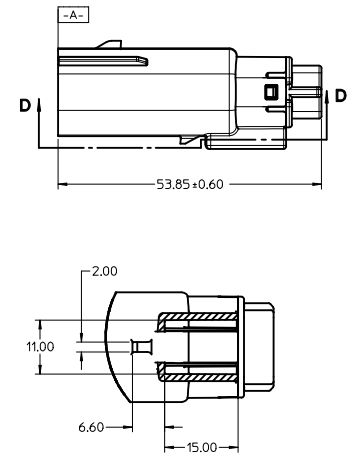
REAR VIEW  
(WIRE HARNESS SIDE)



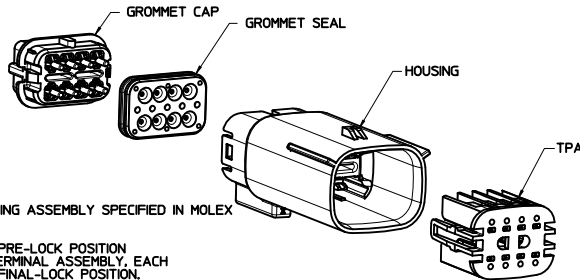
SECTION B-B  
(BLADE SHOWN IN FULL-LOCK POSITION)  
SEE NOTE 2



SECTION C-C  
(BLADE SHOWN IN PRE-LOCK POSITION)  
SEE NOTE 2



SECTION D-D



NOTES: UNLESS OTHERWISE SPECIFIED

- DESIGNED TO MATE WITH RECEPTACLE HOUSING ASSEMBLY SPECIFIED IN MOLEX CHARTED DRAWING SD-33472-081.
- ASSEMBLY SHIPPED WITH BLADE INSERT IN PRE-LOCK POSITION (SEE SECTION C-C PRE-LOCK). UPON FULL TERMINAL ASSEMBLY, EACH BLADE INSERT MUST BE SNAPPED INTO ITS FINAL-LOCK POSITION.
- FOR BLADE TERMINALS TO BE USED WITH THIS ASSEMBLY, SEE DRAWING SD-33000-001.
- SYSTEM TO BE USED WITH WIRE WITHIN DIAMETER RANGE OF 1.5mm TO 2.5mm.
- MATERIAL: SPS/NYLON BLEND, 20% GLASS FILLED.
- CHENGDU ASSEMBLIES SHALL CONFORM TO PACKAGING SPECIFICATION PK-31300-635
- SHALL CONFORM TO PRODUCT SPECIFICATION PS-33472-000.
- ASSEMBLY CONFORMS TO SAE/USCAR-2 REV 4 WITH THE FOLLOWING EXCEPTIONS:  
TERMINAL INSERTION FORCE FOR WIRE SIZE ABOVE 2.5mm NOT EXCEEDING 2.69mm SHALL NOT EXCEED 45 NEWTONS.

ENTER DESCRIPTION IEC NO: UAU2011-0321 DRAWN: SONGS CHKD: APPR: VKOSHY 2010/10/27	QUALITY SYMBOLS	GENERAL TOLERANCES (UNLESS SPECIFIED)	DIMENSION STYLE	SCALE	DESIGN UNITS	THIRD ANGLE PROJECTION															
	$\nabla=0$ $\nabla=0$ $\nabla=0$	<table border="1"> <tr><th></th><th>mm</th><th>INCH</th></tr> <tr><td>4 PLACES</td><td>±---</td><td>±---</td></tr> <tr><td>3 PLACES</td><td>±---</td><td>±---</td></tr> <tr><td>2 PLACES</td><td>±0.10</td><td>±---</td></tr> <tr><td>1 PLACE</td><td>±0.3</td><td>±---</td></tr> </table>		mm	INCH	4 PLACES	±---	±---	3 PLACES	±---	±---	2 PLACES	±0.10	±---	1 PLACE	±0.3	±---	MM ONLY	2:1	METRIC	
		mm	INCH																		
4 PLACES	±---	±---																			
3 PLACES	±---	±---																			
2 PLACES	±0.10	±---																			
1 PLACE	±0.3	±---																			
DRAFT WHERE APPLICABLE MUST REMAIN WITHIN DIMENSIONS	DRAWN BY: DMARCOUX CHECKED BY: DGRIFITHS APPROVED BY: VKOSHY DATE: 2010/10/27	TITLE: MX150 BLADE CONNECTOR ASSEMBLY 2 ROW SEALED, 8 WAY MOLEX INCORPORATED	MATERIAL NO.: AS NOTED DOCUMENT NO.: SD-33482-081	SHEET NO.: 1 OF 1																	