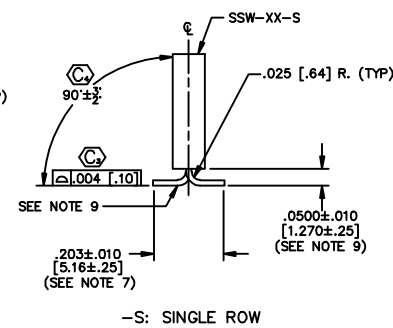
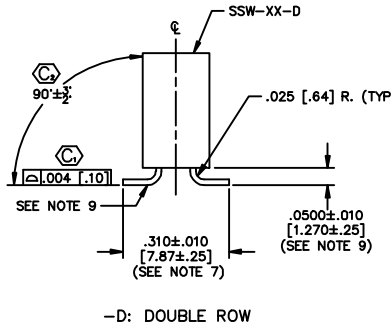
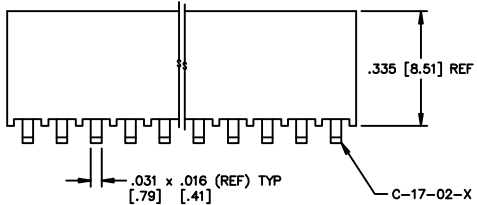
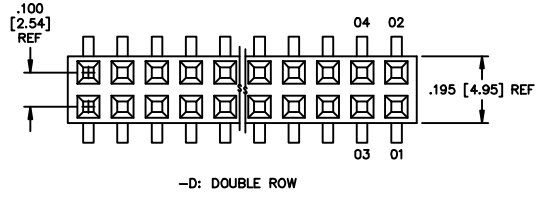
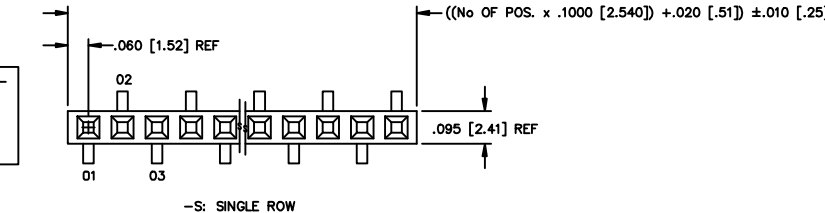


REVISION AJ

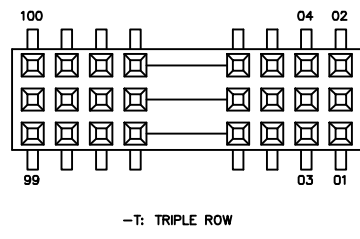
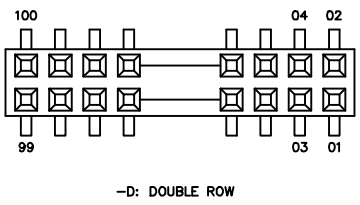
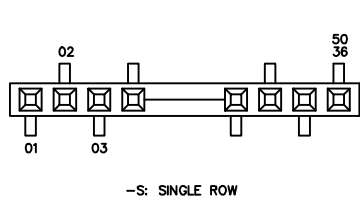
DO NOT SCALE

DIMENSIONS ARE IN INCHES UNLESS OTHERWISE NOTED		TOLERANCES ARE:	TITLE:	DWG NO:
ONE PLACE DECIMALS ± .1 [.3]	THREE PLACE DECIMALS ± .005 [.13]	ANGLES ± 2'	.100 [2.54] Q SURFACE MOUNT ASSEMBLY	SSW-1XX-22-XXX-X-XX-XX-X-XX
TWO PLACE DECIMALS ± .01 [.3]	FOUR PLACE DECIMALS ± .0020 [.051]			SHEET 1 OF 3

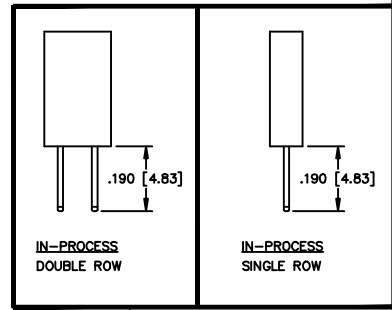


- NOTES:
- MAX CUT FLASH: .015 [.38] WITH NO FLASH BELOW STANDOFFS OR IN CONTACT HOLES.
 - MAX ALLOWABLE BOW: .003 INCH/INCH [mm/mm].
 - MAX ALLOWABLE SWAY: 2' IN EITHER DIRECTION.
 - MAX ALLOWABLE VARIATION BETWEEN PIN ROWS: .010 [.25]
 - "END WALLS" AFTER CUTTING SHOULD BE .020 ± .003 [.51 ± .08].
 - (⊙) REPRESENTS A CRITICAL DIMENSION.
 - SHEAR TAILS TO DIMENSION SHOWN, BURR ALLOWED ON TOP SIDE (MOLD SIDE) TO .005 MAX.
 - POSITIONS -05 THROUGH -50 TO BE PACKAGED IN TUBES; POSITIONS -02 THROUGH -04 TO BE LAYERED PACKAGED.
 - MEASURED AT BEND RADIUS, NOT AT END OF PIN.
 - CONTACT PUSHOUT FORCE: 1.5 LBS. MIN.
 - POLARIZED CORNER OF PPP-12 IS TO BE ORIENTED TOWARD POSITION 1.

FIG. 2 POLARIZATION LOCATION
INSERT PK-06-N INTO SPECIFIED POS AND BREAK OFF TAB



- SSW-1XX-22-XXX-X-XX-XX-X-XX
- OPTION
- TR: TAPE & REEL (AVAILABLE FOR POSITIONS -02 THRU -28 -VS OPTION ONLY)
 - VS OPTION ONLY
 - P: PICK AND PLACE (5 POS MIN) (SEE FIG 4) (USE MPP-02 FOR -D OPTION) (USE PPP-12 FOR -S OPTION) (OPTIONS N/A FOR -TV OR -TM)
 - K: KAPTON PAD (3 POS MIN) (SEE FIG 5)
- POLARIZING OPTION
INDICATE POS - SEE FIG 2
- OPTION
- VS: VERTICAL SURFACE MOUNT (SEE FIG 1)
 - * -TV: TRIPLE VERTICAL MOUNT (SEE FIG 2)
 - * -TM: TRIPLE MIXED MOUNT (SEE FIG 3)
- PLATING SPECIFICATION
- G: GOLD (USE C-17-02-G)
 - S: SELECTIVE (USE C-17-02-S)
 - H: HEAVY GOLD (USE C-17-02-H)
 - F: FLASH SELECTIVE (USE C-17-02-F)
 - P: GOLD FLASHED PALLADIUM NICKEL (USE C-17-02-P)
 - STL: SELECTIVE TIN/LEAD (USE C-17-02-STL)
 - SM: HEAVY GOLD SELECTIVE, MATTE TIN TAIL (AVAILABLE FOR -VS OPTION ONLY)
 - FM: FLASH GOLD SELECTIVE, MATTE TIN TAIL (AVAILABLE FOR -VS OPTION ONLY)
- LEAD STYLE
- 22 (USE C-17-02-X)
- BODY SPECIFICATION
- S: SINGLE (USE SSW-XX-S) (SEE FIG 1)
 - D: DOUBLE (USE SSW-XX-D) (SEE FIG 1)
 - T: TRIPLE (USE SSW-XX-T) (SEE FIG 2 & FIG 3)
- * NOT ENGINEERING APPROVED



MATERIAL:
BODIES:
SINGLE & DOUBLE ROW: LCP
TRIPLE ROW: PCT
COLOR: BLACK
TERMINALS:
PHOSPHOR BRONZE

PROPRIETARY NOTE
THIS DOCUMENT CONTAINS INFORMATION CONFIDENTIAL AND PROPRIETARY TO SAMTEC INC. AND SHALL NOT BE REPRODUCED OR TRANSMITTED IN ANY FORM OR BY ANY MEANS, ELECTRONIC OR MECHANICAL, INCLUDING PHOTOCOPYING, RECORDING, OR BY ANY INFORMATION STORAGE AND RETRIEVAL SYSTEM, WITHOUT THE WRITTEN CONSENT OF SAMTEC INC.

PLUMMER 01-20-97

520 PARK EAST BLVD. NEW ALBANY, INDIANA 47150
PHONE (812) 944-6733 P.O. BOX 1147
CODE 55322

samtec

PLUMMER 01-20-97

SSW-1XX-22-XXX-X-XX-XX-X-XX
SHEET 1 OF 3