



RL-6600

POWER-DISC™ INDUCTOR

New LO-PROFILE



The RL-6600 Series of Power-Disc Inductors is available in 114 standard values covering a wide range of inductance and current. The use of high saturation flux density material make these coils ideal for use in switching regulated power supply applications and wherever high current choke values in a small physical height are needed.

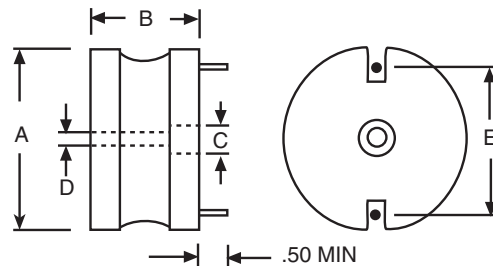
Typical Applications:

- Switching Regulators
- Power Amplifiers
- Power Supplies
- SCR and Triac Controls
- Speaker Crossover Networks
- RFI Suppression
- Filters

MAXIMUM DIMENSIONS:

| Part No. | Type | A | B | C | D |
|-----------|------|------|-----|------|-------------|
| RL-6600-1 | | 1.60 | .68 | .290 | For 8/32 |
| RL-6600-2 | | 2.00 | .74 | .375 | Screw |
| RL-6600-3 | | 2.40 | .74 | .425 | With Washer |

ALL DIMENSIONS IN INCHES



NOTE: See specification tables for "E" dim.



RENCO ELECTRONICS, INC.

595 International Place, Rockledge, FL 32955-4200 USA

(321) 637-1000 • Toll Free Engineering Hot line 800-645-5828

Fax: (321) 637-1600 Web Site: www.rencousa.com E-mail: sales@rencousa.com

| RL-6600-1 | | | | | |
|------------------|------------------------------|--------------------|-----------------------------------|------------------------|--------------------------|
| Renco Part No. | Inductance ODC (μ H) | Max. DCR (Ohms) | Saturation Current (DC Amp) | Rated Current (Amp) | Dimension "E" Approx. |
| RL-6600-1-2.2 | 2.2 | .0028 | 152.0 | 28.2 | 1.10 |
| RL-6600-1-3.9 | 3.9 | .0037 | 118.2 | 27.2 | 1.10 |
| RL-6600-1-4.7 | 4.7 | .0040 | 96.7 | 25.7 | 1.10 |
| RL-6600-1-6.8 | 6.8 | .0048 | 81.9 | 23.7 | 1.10 |
| RL-6600-1-8.2 | 8.2 | .0055 | 71.0 | 22.0 | 1.16 |
| RL-6600-1-12 | 12 | .0067 | 62.6 | 20.7 | 1.16 |
| RL-6600-1-15 | 15 | .0070 | 56.0 | 20.5 | 1.16 |
| RL-6600-1-18 | 18 | .0094 | 50.7 | 20.5 | 1.16 |
| RL-6600-1-22 | 22 | .0103 | 46.3 | 20.4 | 1.18 |
| RL-6600-1-27 | 27 | .0121 | 39.4 | 18.9 | 1.18 |
| RL-6600-1-33 | 33 | .0163 | 36.7 | 14.0 | 1.17 |
| RL-6600-1-39 | 39 | .0173 | 34.3 | 13.6 | 1.17 |
| RL-6600-1-47 | 47 | .0196 | 30.4 | 12.8 | 1.17 |
| RL-6600-1-56 | 56 | .0208 | 28.8 | 12.4 | 1.18 |
| RL-6600-1-68 | 68 | .0292 | 26.0 | 10.7 | 1.17 |
| RL-6600-1-82 | 82 | .0319 | 23.7 | 10.2 | 1.18 |
| RL-6600-1-100 | 100 | .0348 | 21.7 | 9.8 | 1.18 |
| RL-6600-1-120 | 120 | .048 | 19.4 | 8.3 | 1.18 |
| RL-6600-1-150 | 150 | .053 | 17.5 | 7.9 | 1.18 |
| RL-6600-1-180 | 180 | .0743 | 15.9 | 6.4 | 1.18 |
| RL-6600-1-220 | 220 | .0833 | 14.6 | 6.0 | 1.19 |
| RL-6600-1-270 | 270 | .094 | 12.8 | 5.7 | 1.19 |
| RL-6600-1-330 | 330 | .127 | 11.7 | 4.8 | 1.12 |
| RL-6600-1-390 | 390 | .138 | 10.8 | 4.6 | 1.12 |
| RL-6600-1-470 | 470 | .184 | 9.8 | 4.1 | 1.12 |
| RL-6600-1-560 | 560 | .203 | 9.0 | 3.9 | 1.12 |
| RL-6600-1-680 | 680 | .279 | 8.1 | 3.2 | 1.12 |
| RL-6600-1-820 | 820 | .314 | 7.5 | 3.1 | 1.12 |
| RL-6600-1-1000 | 1000 | .348 | 6.7 | 2.9 | 1.14 |
| RL-6600-1-1200 | 1200 | .494 | 6.2 | 2.4 | 1.15 |
| RL-6600-1-1500 | 1500 | .548 | 5.5 | 2.3 | 1.14 |
| RL-6600-1-1800 | 1800 | .732 | 5.1 | 1.95 | 1.14 |
| RL-6600-1-2200 | 2200 | .809 | 4.5 | 1.80 | 1.12 |
| RL-6600-1-2700 | 2700 | 1.120 | 4.1 | 1.53 | 1.13 |
| RL-6600-1-3300 | 3300 | 1.182 | 3.7 | 1.46 | 1.13 |
| RL-6600-1-3900 | 3900 | 1.380 | 3.4 | 1.40 | 1.13 |

NOTES:

1. Saturation current lowers inductance 5%.
2. Inductance $\pm 10\%$ measured at 1KHz, values below $10\mu\text{H} \pm 20\%$.
3. Leads for PC mounting tinned to within 1/16" of body.
4. Non-listed values available on request.
5. Coils finished with sleeving UL-VW-1 rated.
6. Center hole for mechanical mounting.
7. 500VDC 1 minute hi pot.
8. RDC measured @ 20°C.
9. Spacer available at additional cost to facilitate PC board washing.



RENCO ELECTRONICS, INC.

595 International Place, Rockledge, FL 32955-4200 USA

(321) 637-1000 • Toll Free Engineering Hot line 800-645-5828

Fax: (321) 637-1600 Web Site: www.rencousa.com E-mail: sales@rencousa.com

| RL-6600-2 | | | | | |
|------------------|------------------------|--------------------|-----------------------------------|------------------------|--------------------------|
| Renco Part No. | Inductance ODC (μH) | Max. DCR (Ohms) | Saturation Current (DC Amp) | Rated Current (Amp) | Dimension "E" Approx. |
| RL-6600-2-2.2 | 2.2 | .0021 | 205 | 34.7 | 1.21 |
| RL-6600-2-3.3 | 3.3 | .0026 | 147 | 33.7 | 1.29 |
| RL-6600-2-5.6 | 5.6 | .0036 | 114 | 31.0 | 1.29 |
| RL-6600-2-8.2 | 8.2 | .0041 | 93.5 | 30.4 | 1.29 |
| RL-6600-2-12 | 12 | .0047 | 79 | 29.6 | 1.37 |
| RL-6600-2-15 | 15 | .0055 | 68.5 | 27.6 | 1.39 |
| RL-6600-2-18 | 18 | .0062 | 60.5 | 25.9 | 1.37 |
| RL-6600-2-22 | 22 | .0068 | 54.1 | 24.5 | 1.37 |
| RL-6600-2-27 | 27 | .0077 | 48.9 | 23.3 | 1.37 |
| RL-6600-2-33 | 33 | .0084 | 44.7 | 22.3 | 1.37 |
| RL-6600-2-39 | 39 | .0112 | 41.4 | 18.4 | 1.17 |
| RL-6600-2-47 | 47 | .0132 | 35.4 | 18.0 | 1.17 |
| RL-6600-2-56 | 56 | .0142 | 33.2 | 17.5 | 1.44 |
| RL-6600-2-68 | 68 | .0180 | 31.2 | 15.6 | 1.44 |
| RL-6600-2-82 | 82 | .0202 | 27.8 | 14.8 | 1.43 |
| RL-6600-2-100 | 100 | .0223 | 25.1 | 14.0 | 1.43 |
| RL-6600-2-120 | 120 | .0324 | 22.8 | 11.7 | 1.44 |
| RL-6600-2-150 | 150 | .0368 | 20.2 | 11.0 | 1.44 |
| RL-6600-2-180 | 180 | .0468 | 18.7 | 9.5 | 1.44 |
| RL-6600-2-220 | 220 | .0520 | 16.9 | 9.0 | 1.44 |
| RL-6600-2-270 | 270 | .0587 | 14.9 | 8.5 | 1.46 |
| RL-6600-2-330 | 330 | .0780 | 14.1 | 7.8 | 1.46 |
| RL-6600-2-390 | 390 | .0844 | 13.0 | 7.5 | 1.45 |
| RL-6600-2-470 | 470 | .120 | 11.5 | 6.5 | 1.43 |
| RL-6600-2-560 | 560 | .131 | 10.6 | 6.2 | 1.44 |
| RL-6600-2-680 | 680 | .142 | 9.8 | 6.0 | 1.46 |
| RL-6600-2-820 | 820 | .187 | 8.8 | 4.9 | 1.45 |
| RL-6600-2-1000 | 1000 | .206 | 8.0 | 4.7 | 1.45 |
| RL-6600-2-1200 | 1200 | .301 | 7.4 | 3.85 | 1.45 |
| RL-6600-2-1500 | 1500 | .353 | 6.6 | 3.74 | 1.46 |
| RL-6600-2-1800 | 1800 | .383 | 5.8 | 3.43 | 1.46 |
| RL-6600-2-2200 | 2200 | .548 | 5.4 | 2.90 | 1.45 |
| RL-6600-2-2700 | 2700 | .793 | 4.74 | 2.28 | 1.46 |
| RL-6600-2-3300 | 3300 | .874 | 4.3 | 2.15 | 1.45 |
| RL-6600-2-3900 | 3900 | .948 | 3.97 | 2.08 | 1.46 |
| RL-6600-2-4700 | 4700 | 1.24 | 3.6 | 2.00 | 1.46 |
| RL-6600-2-5600 | 5600 | 1.40 | 3.3 | 1.88 | 1.46 |
| RL-6600-2-6800 | 6800 | 1.84 | 3.0 | 1.80 | 1.46 |
| RL-6600-2-8200 | 8200 | 2.38 | 2.79 | 1.50 | 1.47 |
| RL-6600-2-10000 | 10000 | 2.75 | 2.53 | 1.40 | 1.47 |



RENCO ELECTRONICS, INC.

✉ 595 International Place, Rockledge, FL 32955-4200 USA

☎ (321) 637-1000 • Toll Free Engineering Hot line 800-645-5828

SINCE 1955 📠 Fax: (321) 637-1600 🌐 Web Site: www.rencousa.com ✉ E-mail: sales@rencousa.com

| RL-6600-3 | | | | | |
|------------------|------------------------|--------------------|-----------------------------------|------------------------|--------------------------|
| Renco Part No. | Inductance ODC (μH) | Max. DCR (Ohms) | Saturation Current (DC Amp) | Rated Current (Amp) | Dimension "E" Approx. |
| RL-6600-3-1.0 | 1.0 | .0018 | 350 | 44 | 1.52 |
| RL-6600-3-2.2 | 2.2 | .0024 | 213 | 40 | 1.52 |
| RL-6600-3-4.7 | 4.7 | .003 | 152 | 36 | 1.60 |
| RL-6600-3-8.2 | 8.2 | .0042 | 118 | 32 | 1.29 |
| RL-6600-3-12 | 12 | .0053 | 97 | 30 | 1.64 |
| RL-6600-3-15 | 15 | .0060 | 82 | 28 | 1.69 |
| RL-6600-3-18 | 18 | .0067 | 71 | 27 | 1.77 |
| RL-6600-3-22 | 22 | .0076 | 62 | 26 | 1.77 |
| RL-6600-3-27 | 27 | .0085 | 56 | 24 | 1.77 |
| RL-6600-3-33 | 33 | .0094 | 51 | 23 | 1.86 |
| RL-6600-3-39 | 39 | .013 | 46 | 20 | 1.86 |
| RL-6600-3-47 | 47 | .015 | 42 | 19 | 1.78 |
| RL-6600-3-56 | 56 | .016 | 39 | 18 | 1.88 |
| RL-6600-3-68 | 68 | .021 | 36 | 16 | 1.88 |
| RL-6600-3-82 | 82 | .024 | 32 | 14 | 1.82 |
| RL-6600-3-100 | 100 | .031 | 30 | 13 | 1.77 |
| RL-6600-3-120 | 120 | .035 | 27 | 12 | 1.87 |
| RL-6600-3-150 | 150 | .045 | 25 | 11 | 1.77 |
| RL-6600-3-180 | 180 | .055 | 22 | 9.5 | 1.83 |
| RL-6600-3-220 | 220 | .076 | 20 | 8.0 | 1.75 |
| RL-6600-3-270 | 270 | .084 | 18 | 8.0 | 1.80 |
| RL-6600-3-330 | 330 | .093 | 16 | 7.5 | 1.80 |
| RL-6600-3-390 | 390 | .127 | 15 | 6.5 | 1.80 |
| RL-6600-3-470 | 470 | .138 | 14 | 6.0 | 1.80 |
| RL-6600-3-560 | 560 | .192 | 13 | 5.0 | 1.80 |
| RL-6600-3-680 | 680 | .210 | 11 | 5.0 | 1.76 |
| RL-6600-3-820 | 820 | .287 | 10 | 4.0 | 1.69 |
| RL-6600-3-1000 | 1000 | .320 | 9.5 | 4.0 | 1.72 |
| RL-6600-3-1200 | 1200 | .349 | 8.5 | 3.8 | 1.76 |
| RL-6600-3-1500 | 1500 | .492 | 7.8 | 3.2 | 1.72 |
| RL-6600-3-1800 | 1800 | .544 | 7.0 | 3.0 | 1.75 |
| RL-6600-3-2200 | 2200 | .691 | 6.25 | 2.3 | 1.71 |
| RL-6600-3-2700 | 2700 | .764 | 5.65 | 2.2 | 1.77 |
| RL-6600-3-3300 | 3300 | 1.027 | 5.21 | 1.98 | 1.71 |
| RL-6600-3-3900 | 3900 | 1.113 | 4.79 | 1.90 | 1.70 |
| RL-6600-3-4700 | 4700 | 1.565 | 4.36 | 1.65 | 1.72 |
| RL-6600-3-5600 | 5600 | 1.700 | 4.00 | 1.58 | 1.72 |
| RL-6600-3-6800 | 6800 | 1.854 | 3.58 | 1.50 | 1.46 |



RENCO ELECTRONICS, INC.

✉ 595 International Place, Rockledge, FL 32955-4200 USA

☎ (321) 637-1000 • Toll Free Engineering Hot line 800-645-5828

📠 Fax: (321) 637-1600 🌐 Web Site: www.rencousa.com ✉ E-mail: sales@rencousa.com