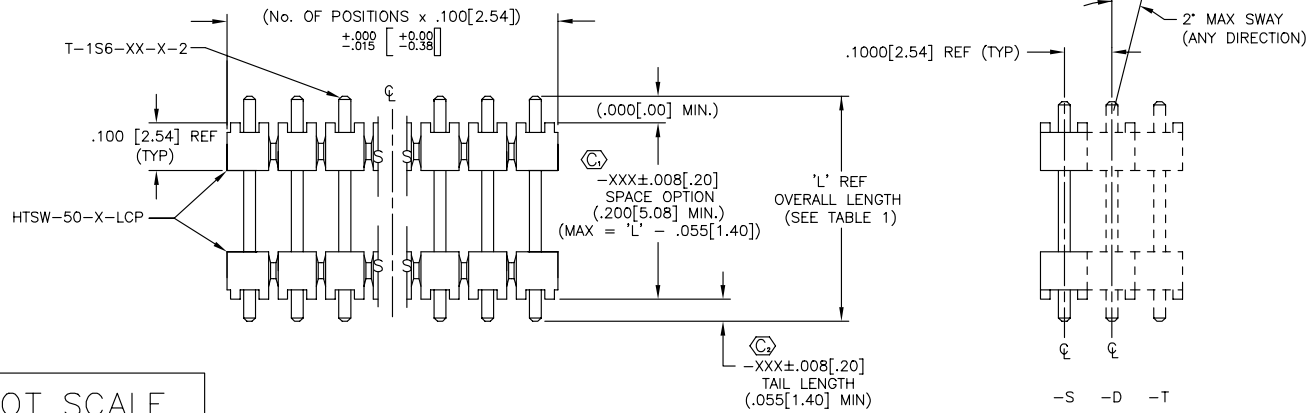
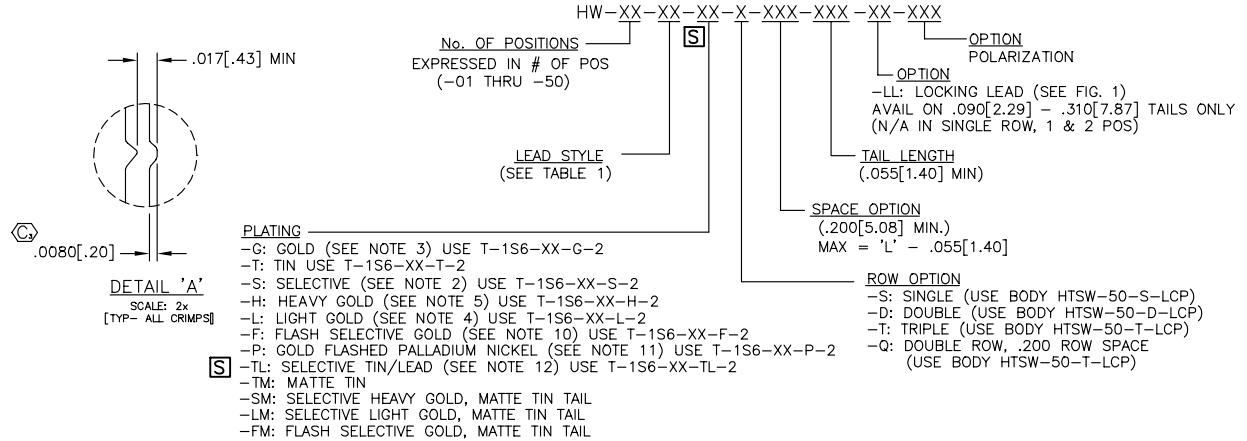


REVISION S

TABLE 1				
LEAD STYLE	TERMINAL	'L'-OVERALL LENGTH (REF)	SPACE OPTION MAX	
-07	T-1S6-07-X-2	.430 [10.92]	.375	[9.53]
-08	T-1S6-08-X-2	.530 [13.46]	.475	[12.07]
-09	T-1S6-09-X-2	.730 [18.54]	.675	[17.15]
-10	T-1S6-10-X-2	.830 [21.08]	.775	[19.69]
-11	T-1S6-11-X-2	.930 [23.62]	.875	[22.23]
-12	T-1S6-12-X-2	1.030 [26.16]	.975	[24.77]
-13	T-1S6-13-X-2	1.230 [31.24]	1.175	[29.85]
-14	T-1S6-14-X-2	1.430 [36.32]	1.375	[34.93]
-15	T-1S6-15-X-2	.630 [16.00]	.575	[14.61]
-16	T-1S6-16-X-2	.445 [11.30]	.390	[9.91]
-17	T-1S6-17-X-2	.480 [12.19]	.425	[10.80]
-19	T-1S6-19-X-2	1.330 [33.78]	1.275	[32.39]
-20	T-1S6-20-X-2	1.130 [28.70]	1.075	[27.31]

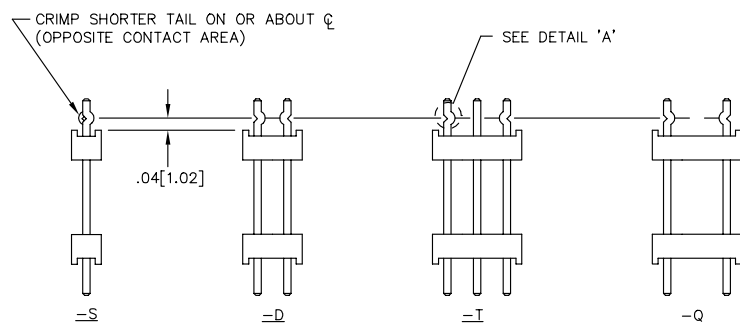
UNLESS OTHERWISE NOTED TOLERANCES ARE:

DIMENSIONS ARE IN INCHES	ONE PLACE DECIMALS ± .1 [2.5]	THREE PLACE DECIMALS ± .005 [0.13]	ANGLES ± 2°	TITLE: .100 [2.54] HIGH TEMP TERMINAL BODY (BOARD STACKING)	DWG NO: HW-XX-XX-X-X-XXX-XXX-XX-XXX
	TWO PLACE DECIMALS ± .01 [0.25]	FOUR PLACE DECIMALS ± .0020 [0.050]			SHEET 1 OF 1



DO NOT SCALE FROM THIS PRINT

FIG. 1



- NOTES:
- HEIGHT VARIATION BETWEEN ANY TWO PINS SHALL BE .010[.25] MAX.
  - S PLATING: GOLD WILL BE ON THE LONGER TAIL.
  - G PLATING: HEAVY GOLD ON LONGER TAIL
  - L PLATING: GOLD ON LONGER TAIL
  - H PLATING: HEAVY GOLD ON LONGER TAIL
  - (Ⓢ) REPRESENTS A CRITICAL DIMENSION FOR STATISTICAL PROCESS CONTROL USE.
  - MAX ALLOWABLE BOW: .005[.13] IN/IN AFTER ASSEMBLY.
  - MAX PIN ROTATION IN BODY: 2°.
  - PUSHOUT FORCE SHALL BE 2 LB. MIN.
  - F PLATING: FLASH SELECTIVE GOLD ON LONGER TAIL
  - P PLATING: GOLD FLASHED PALLADIUM NICKEL ON LONGER TAIL
  - TL PLATING: TIN/LEAD ON LONGER TAIL
  - PARTS ARE CUT TO SIZE.
  - CUT FLASH MAX .005[.13].

**PROPRIETARY NOTE**  
THIS DOCUMENT CONTAINS INFORMATION CONFIDENTIAL AND PROPRIETARY TO SAMTEC INC. AND SHALL NOT BE REPRODUCED OR TRANSMITTED TO OTHER DOCUMENTS OR DISCLOSED TO OTHERS OR USED FOR ANY PURPOSE OTHER THAN THAT FOR WHICH IT WAS OBTAINED WITHOUT THE EXPRESSED WRITTEN CONSENT OF SAMTEC INC.

MATERIAL:  
INSULATOR:  
VECTRA E-130, COLOR: NATURAL

TERMINAL:  
PHOSPHOR BRONZE, ALLOY No 510, GRADE A, FEDERAL SPEC. QQ-B-750, 3/4 HARD, 95 - 105 KPSI TENSILE.  
MATERIAL THICKNESS: .0250±.0003

EXISPROD\ASSEMBLY\100 HW-ASM

**samtec**

520 PARK EAST BLVD. NEW ALBANY, INDIANA 47150  
PHONE (812) 944-6733 P.O. BOX 1147  
CODE 55322

MADE BY:  
REIDINGER 8-27-91 HW-XX-XX-X-X-XXX-XXX-XX-XXX

SHEET 1 OF 1