

N 50 Ohm : Specifications and Interface Dimensions

MATERIALS:

- Connector Body: Brass per ASTM B16
- Center Contact Male: Brass per ASTM B16
- Center Contact Female: Brass, Phosphor Bronze or Beryllium Copper
- Insulation: Teflon or Delrin
- Gasket: Silicone Rubber or Rubber
- Crimp Ferrule: Annealed Copper Alloy

Finish:

- Center Contact Male: Gold per MIL-G-45204
- Center Contact Female: Gold per MIL-G-45204
- Connector Body: Nickel per QQ-N-290

MATING CHARACTERISTICS

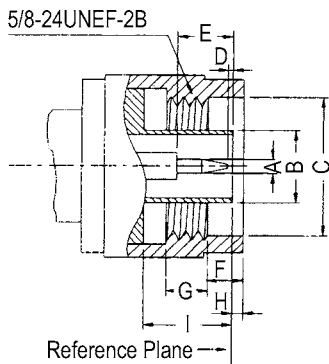
- Mating: 5/8" - 24 Threaded Coupling
- Durability: 500 Matings
- Coupling Nut Retention: 100 lbs. Minimum

ELECTRICAL

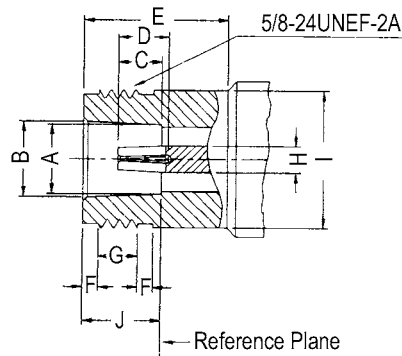
- Impedance: 50 Ohm
- Frequency Range: 0 to 12.4 GHz
- Voltage Standing Wave Ratio: 1.15+ 0.015 xF GHz Maximum
- Dielectric Withstanding Voltage: 2,500 Volts RMS Maximum
- Connectors For RG-58,141,142,223 - 1,000 Volts RMS Maximum
- Connectors For RG-174,188,316 - 750 Volts RMS Maximum
- Contact Resistance:
 - Center Contact= 1.0 Milliohms Maximum
 - Outer Contact= 0.2 Milliohms Maximum
- RF Leakage: 90 dB Minimum @ 3 GHz
- Insertion Loss: .15 dB Maximum @ 10 GHz
- Insertion Resistance: 5,000 Megohms Minimum

ENVIRONMENTAL

- Temperature Range: -65°C to 165°C
- Vibration: MIL-STD-202, Method 204, Test Condition B.
- Salt Spray: MIL-STD-202, Method 101, Test Condition B.
- Temperature Cycling: MIL-STD-202, Method 107, Test Condition B.



PLUG		
Letter	Minimum	Maximum
A	.063	.066
B	.313	.3158
C	.630	-
D	.003	-
E	.210	.230
F	.158	.168
G	.177	-
H	.016	.060
I	.398	.412



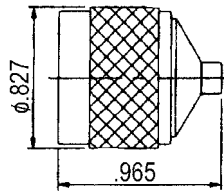
Jack		
Letter	Minimum	Maximum
A	.316	.320
B	.336	.344
C	.187	.207
D	.210	-
E	.422	-
F	.047	.077
G	.172	.202
H	.118	.124
I	-	.627
J	.356	.362

Note: Dimensions shown in inches.

Winchester/Retconn

N SERIES: For Semi-Rigid Cable (Direct Solder Attachment)

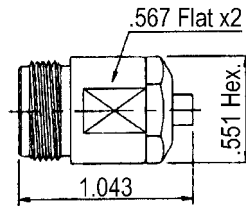
Straight Plug



Part Number	Cable
600-500-1410Y	RG-402 (.141")
600-500-0850Y	RG-405 (.085")
600-500-2500Y	RG-401 (.250")

• See page 115 for cable assembly procedures: CM-01

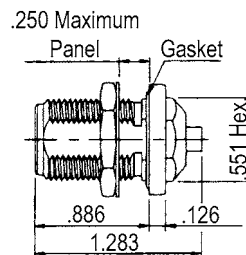
Straight Jack



Part Number	Cable
601-500-1410Y	RG-402 (.141")
601-500-0850Y	RG-405 (.085")
601-500-2500Y	RG-401 (.250")

• See page 115 for cable assembly procedures: CM-01

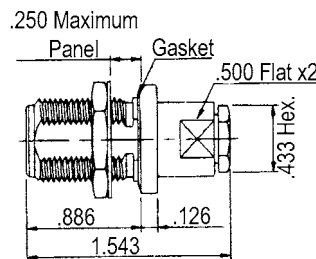
Straight Bulkhead Jack



Part Number	Cable	Mounting Hole
601-526-1410Y	RG-402 (.141")	No. 026
601-526-0850Y	RG-405 (.085")	No. 026
601-526-2500Y	RG-401 (.250")	No. 026

• See page 115 for cable assembly procedures: CM-01
• See page 83 for mounting hole layout.

Straight Bulkhead Jack

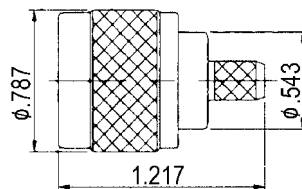


Part Number	Cable	Mounting Hole
601-626-2500Y	RG-401 (.250")	No. 026

• See page 116 for cable assembly procedures: CM-01
• See page 83 for mounting hole layout.

N SERIES: Flexible Cable - Crimp Attachment

Straight Plug Crimp



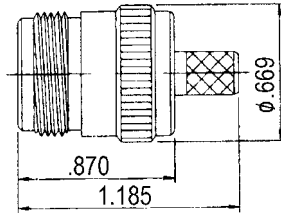
Part Number	Cable
600-900-2850Y	RG-8A,213
600-900-2851Y	RG-9B,214
600-900-1160Y	RG-58,58A,141A
600-900-1165Y	RG-59,62A,210

• See page 116 for cable assembly procedures: CM-03

Note: Dimensions shown in inches.

N SERIES: Flexible Cable - Crimp Attachment

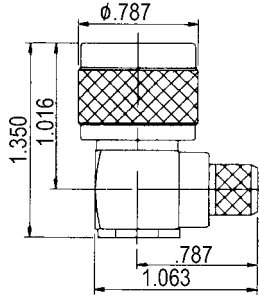
Straight Jack Crimp



Part Number	Cable
601-900-2850Y	RG-8A,213
601-900-2851Y	RG-9B,214
601-900-1160Y	RG-58,58A,141A
601-900-1165Y	RG-59,62A,210

• See page 116 for cable assembly procedures: CM-03

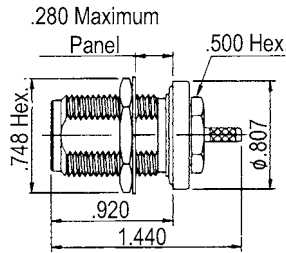
Right Angle Plug Crimp



Part Number	Cable
602-900-2850Y	RG-8A,213
602-900-2851Y	RG-9B,214
602-900-1160Y	RG-58,58A,141A
602-900-1165Y	RG-59,62A,210

• See page 119 for cable assembly procedures: CM-06

Straight Bulkhead Jack Crimp

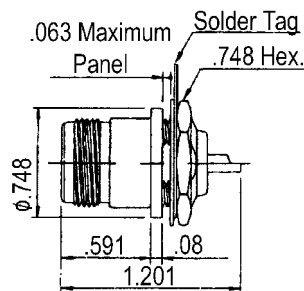


Part Number	Cable	Mounting Hole
601-926-0630Y	RG-174,188A,316	No. 026

• See page 83 for mounting hole layout.

N SERIES: Bulkhead Mount Receptacles

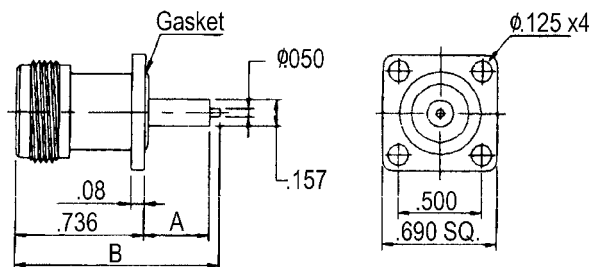
Straight Bulkhead Jack Crimp Style (Solder Pot Contact)



Part Number	Mounting Hole
601-025-0000Y	No. 025

• See page 83 for mounting hole layout.

Square Flange Jack Receptacle (Exposed Teflon)



Part Number	A	B
601-050-0040Y	.256	1.10
601-050-0041Y	.732	1.57

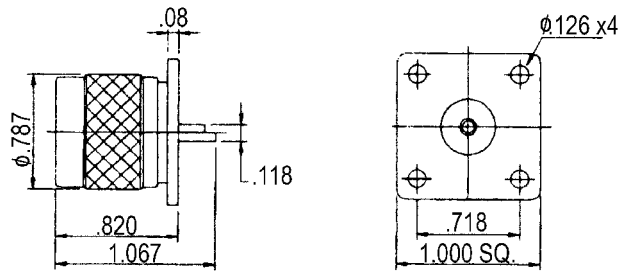
Note: Dimensions shown in inches.

Winchester/Retconn

400 Park Road • Watertown, Connecticut 06795-5000 • Phone: (860) 945-5000 • FAX: (860) 945-3950 • Internet: <http://www.litton-wed.com>

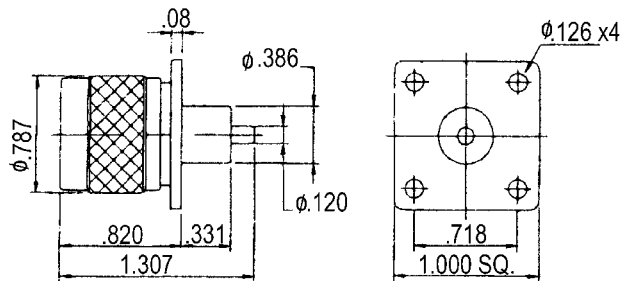
N SERIES: Bulkhead Mount Receptacles

**Square Flange
Plug Receptacle
(Solder Pot Contact)**



Part Number
600-073-0000Y

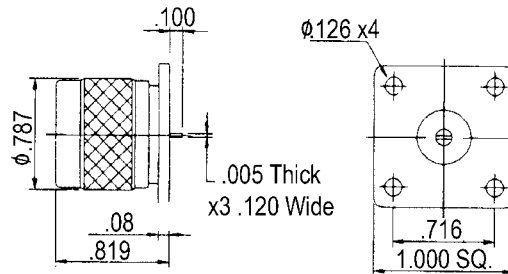
**Square Flange
Plug Receptacle
(Exposed Teflon)**



Part Number
600-073-0040Y

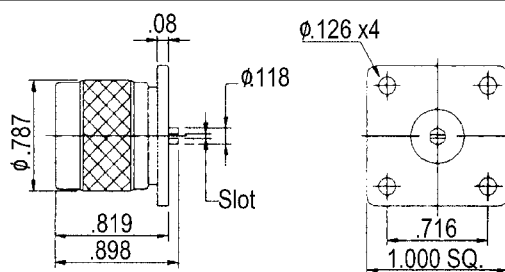
N SERIES: Panel Mount Receptacle

**Square Flange
Plug Receptacle
(Tab Contact)**



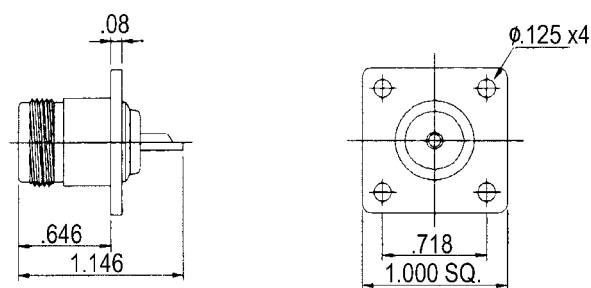
Part Number
600-073-0030Y

**Square Flange
Plug Receptacle
(Slotted Contact)**



Part Number
600-073-0020Y

**Square Flange
Jack Receptacle
(Solder Pot Contact)**

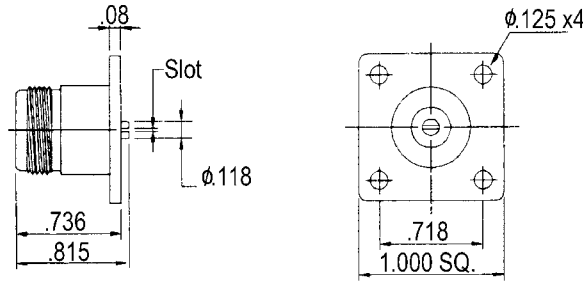


Part Number
601-073-0000Y

Note: Dimensions shown in inches.

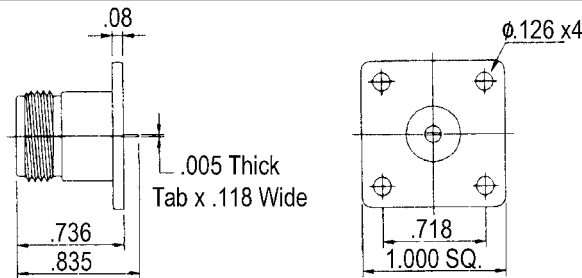
N SERIES: Panel Mount Receptacle

Square Flange Jack Receptacle (Slotted Contact)



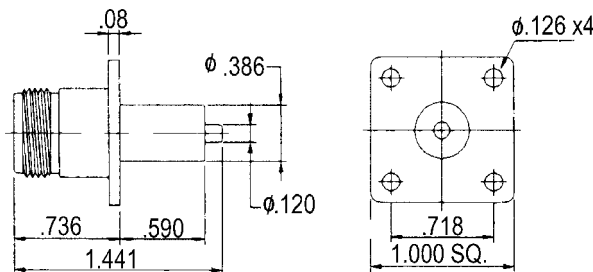
Part Number
601-073-0020Y

Square Flange Jack Receptacle (Tab Contact)



Part Number
601-073-0030Y

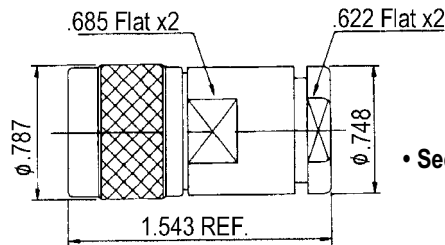
Square Flange Jack Receptacle (Exposed Teflon)



Part Number
601-073-0040Y

N SERIES: Flexible Cable - Clamp Attachment

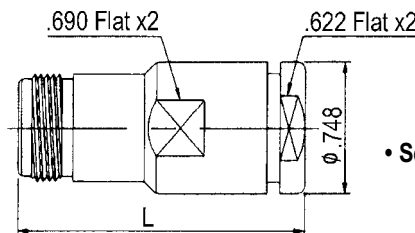
Straight Plug Clamp



Part Number	Cable
600-800-2850Y	RG-8A,213
600-800-2851Y	RG-9B,214
600-800-1160Y	RG-58,141A
600-800-1165Y	RG-59,210

• See page 120 for cable assembly procedures: CM-07

Straight Jack Clamp



Part Number	Cable
601-800-2850Y	RG-8A,213
601-800-2851Y	RG-9B,214
601-800-1160Y	RG-58,141A
601-800-1165Y	RG-59,210

• See page 120 for cable assembly procedures: CM-07

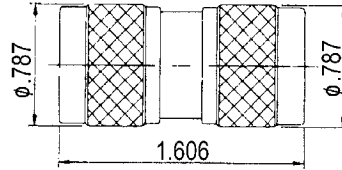
Note: Dimensions shown in inches.

Winchester/Retconn

400 Park Road • Watertown, Connecticut 06795-5000 • Phone: (860) 945-5000 • FAX: (860) 945-3950 • Internet: <http://www.litton-wed.com>

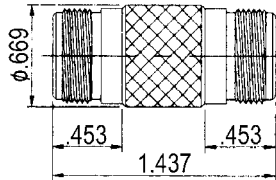
N SERIES: In-Series Adapters

Plug - Plug



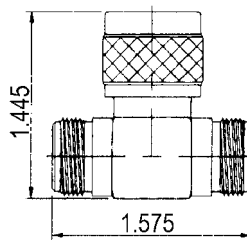
Part Number
600-600-0000Y

Jack - Jack



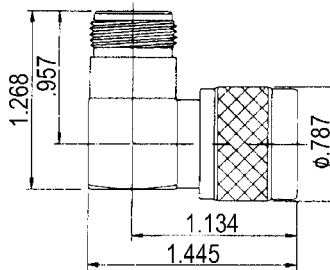
Part Number
601-601-0000Y

Tee Adapter Jack - Plug - Jack



Part Number
604-605-0000Y

Right Angle Plug - Jack



Part Number
602-603-0000Y

Note: Dimensions shown in inches.