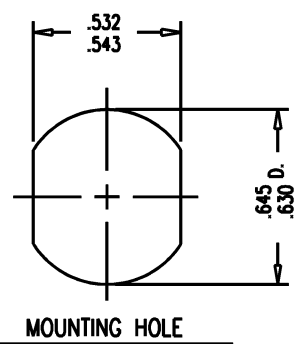


- NOTES:
1. FOR USE WITH BOEING S280W503-5 & ADAMS RUSSELL FC38Z CABLES.
 2. FOR CABLING INSTRUCTIONS SEE 3-546-2.
 3. FOR CRIMPING USE DIE KTH-2213.
 4. INTERFACE PER MIL-STD-348, FIG. 304-2.
 5. CENTER CONTACT (1-534-86MA9) SUPPLIED UNASSEMBLED.
 6. MARK PACKAGE: KINGS 1202-26-9 YRWK (DATE CODE)
 7. MATERIALS:
 INSULATOR-TEFLON, ASTM-D-4894
 LOCKWASHER-PHOS. BRONZE, ASTM-B-103
 CENTER CONTACT-BER. COP., ASTM-B-196
 K-GRIP SLEEVE-COM. BRONZE, ASTM-B-140
 GASKET-SILICONE RUBBER, ZZ-R-765
 ALL OTHER METAL PARTS-BRASS, ASTM-B16
 8. FINISHES:
 CENTER CONTACT-GOLD PLATE PER MIL-G-45204
 ALL OTHER METAL PARTS-KINGS TARNISH RESISTANT NICKEL FINISH (TR-5)
 9. ELECTRICAL CHARACTERISTICS:
 NOMINAL IMPEDANCE-50 OHMS
 FREQUENCY RANGE-DC TO 11 GHZ
 WORKING VOLTAGE-1000 VRMS

GSD

1202-26-9



GSD

REVISIONS

ISSUE	CHANGES
0	ER 35885 KH 11/03/94
1	CN 37995 E TML 04/06/00

1202269S

SCALE	4:1	
APPROX SURFACE AREA		
WAS:	E-18245	
USED ON		
REF:		
JACK, BULKHEAD, N		
DRAWN	MJB	DATE 08/11/94
DESIGN	CT	DATE 11/03/94
APPR.	JT	DATE 11/04/94

KINGS
 ELECTRONICS CO., INC.
 ROCK HILL, SOUTH CAROLINA 29730

1202-26-9