

**SSCF-2P3 Series**  
**SC DUPLEX HOUSING**  
**( $\phi$ 3.0mm / Push-pull Type)**  
**TECHNICAL SPECIFICATIONS**

**Seiko Instruments Inc.**

Components Sales Dept.

8, Nakase 1-Chome

Mihama-ku, Chiba-shi, Chiba-ken

261 JAPAN

Telephone : 043-211-1214

-1215

Facsimile : 043-211-8035

SSCF-2P3 Series SC DUPLEX HOUSING (  $\phi$  3.0mm / Push-pull Type )  
TECHNICAL SPECIFICATIONS

Document Number NCD-62B6-02

NCD-62B6-01      February 1996  
NCD-62B6-02      March 1996

Copyright 1996 by **Seiko Instruments Inc.**  
All right reserved.

The information contained herein shall not reproduced or disclosed to any third party without the express written consent of **SII**.

The Specifications contained herein are subject to change without notice.

**SII** is a trademark of **Seiko Instruments Inc.**

Please address any questions, comments, and suggestions to:

**Seiko Instruments USA Inc.**

Electronics Components Division  
2990 West Lomita Boulevard  
Torrance, CA 90505, U.S.A.  
Phone: 310-517-7780  
Fax: 310-517-7792

**Seiko Instruments (H.K.) Ltd.**

Sales Department  
4th & 5th Floor, Wyler Center 2  
200 Tai Lin Pai Road, Kwai Chung  
N.T., Kowloon, Hong Kong  
Phone: 852-2421-8611  
Fax: 852-2480-5479

**Seiko Instruments Singapore pte. Ltd.**

2, Marsiling Lane,  
Woodlands New Town,  
Singapore, 2573, Singapore  
Phone: 65-2691370  
Fax: 65-2699729

**Seiko Instruments GmbH**

OFC Division  
Siemensstraße 9b  
D-63263 Neu-Isenburg, Germany  
Phone: 06102-297-0  
Fax: 06102-297-211

**Seiko Instruments Taiwan Inc.**

Sales Department  
5F-1, No.99, Sec. 2, Chung Shan  
Rd.  
Taipei 104, Taiwan, R.O.C.  
Phone: 02-563-5001, 523-5111  
Fax: 02-521-9519

## TABLE OF CONTENTS

Section	Page
1. PROVISION	1
1.1 Application Limit	1
2. PARTS NUMBER	1
3. GENERAL SPECIFICATIONS	2
3.1 Parts and Materials	2
3.2 Physical Dimensions	2
3.3 General Tolerances	2
4. PACKING	3

### Table

Table 1	Parts Number	1
Table 2	Parts and Materials	2
Table 3	General Tolerance	2

### Figure

Figure 1	SSCF-2P3 Housing (Synthetic rubber Hood type)	4
Figure 2	SSCF-2P3 Housing (Plastic Hood type)	5
Figure 3 to 11	Part Dimensions	6 to 10



## 1. PROVISION

### 1.1 Application Limit

These specifications apply to the SSCF-2P3 SC DUPLEX HOUSING (  $\phi$  3.0mm / Push-pull Type ) supplied by **SII**.

## 2. PARTS NUMBER

Parts Number of the Housing is Shown in Table 1.

Table 1 Parts Number

MODEL Number		Type Number							
SSCF-2P3		5	5	3	1	4	2	0	0

Hood ( 1,2 ) Color	
0	
2	Red
3	White
4	Grey
5	Blue
6	Deep-Green

Hood I.D.	
0	
3	$\phi$ 3.0 mm
7	$\phi$ 3.0 mm (Plastic)

Cap	
0	
4	Blue PVC

Marking of Grip	
1	<b>SII / SSCF-2P</b>

(Required)	
0	0

Package	
2	Individual Package
3	Separate Package

### 3. GENERAL SPECIFICATIONS

#### 3.1 Parts and Materials

Parts and the Materials are shown in Table 2.

Table 2 Parts and Materials

No.	Part Name	Q'ty	Material	Notes
①	Grip	1	Plastics	Blue , UL94 V-0
②	Plug frame	2	Plastics	White , UL94 V-0
③	Spring	2	Stainless Steel	- -
④	Stop ring	2	Brass	Nickel Plating
⑤	Crimping ring	2	Aluminum	- -
⑥	Ring	2	Stainless Steel	- -
⑦-a	Hood	2	Synthetic Rubber	Hood Color Shows Table 1
⑦-b			Plastics	Hood Color Shows Table 1, UL94 V-0 Bend Proof type
⑧	Cap	2	PVC	Blue

#### 3.2 Physical Dimensions

Figure 1 to 2 show the assembled state of SSCF-2P3.

Figure 3 to 11 show the part dimension.

- Compatible with NTT SCF-2PH plug housing

#### 3.3 General Tolerances

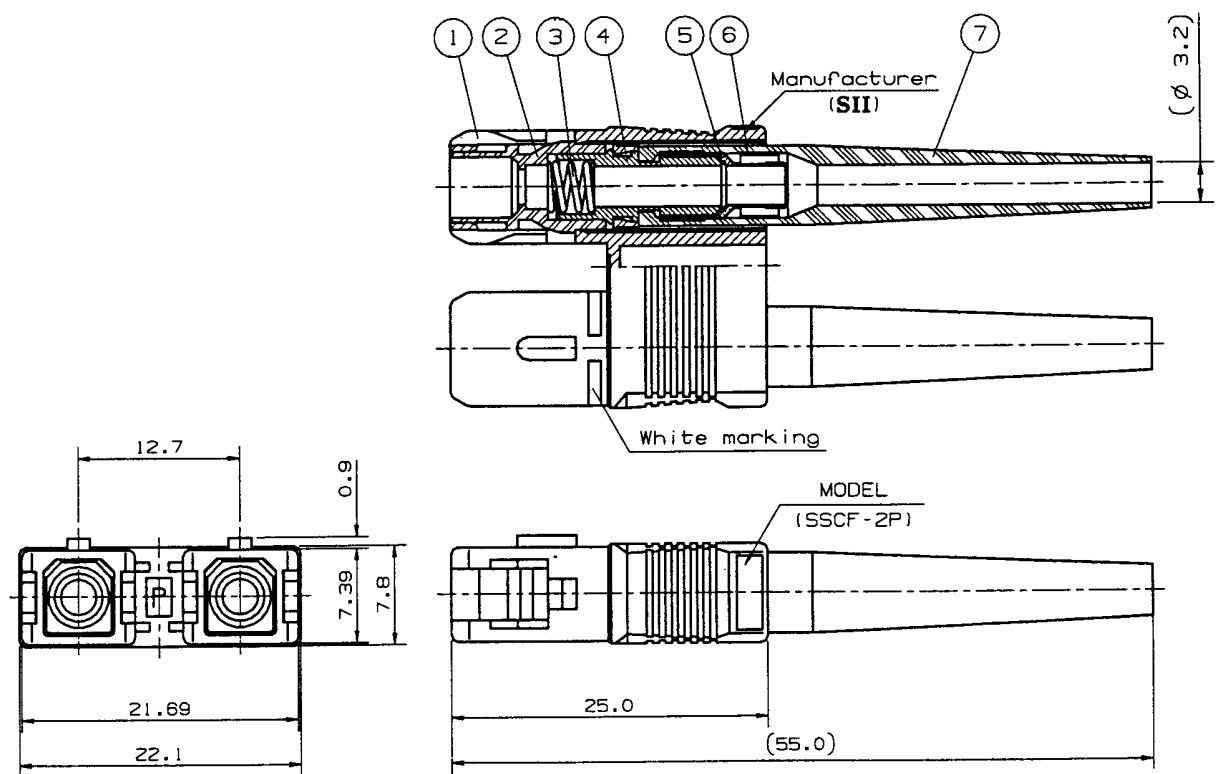
Permissible deviation in dimensions without tolerance indication is in accordance with JIS B 0405 class m, as shown in Table 3.

Table 3 General Tolerance (JIS B 0405 class m)

Basic size step (mm)		Permissible deviation (mm)
Over	Under	
0.5	3	$\pm 0.1$
3	6	$\pm 0.1$
6	30	$\pm 0.2$
30	120	$\pm 0.3$

#### 4. PACKING

The product is packed to prevent damage during shipping.



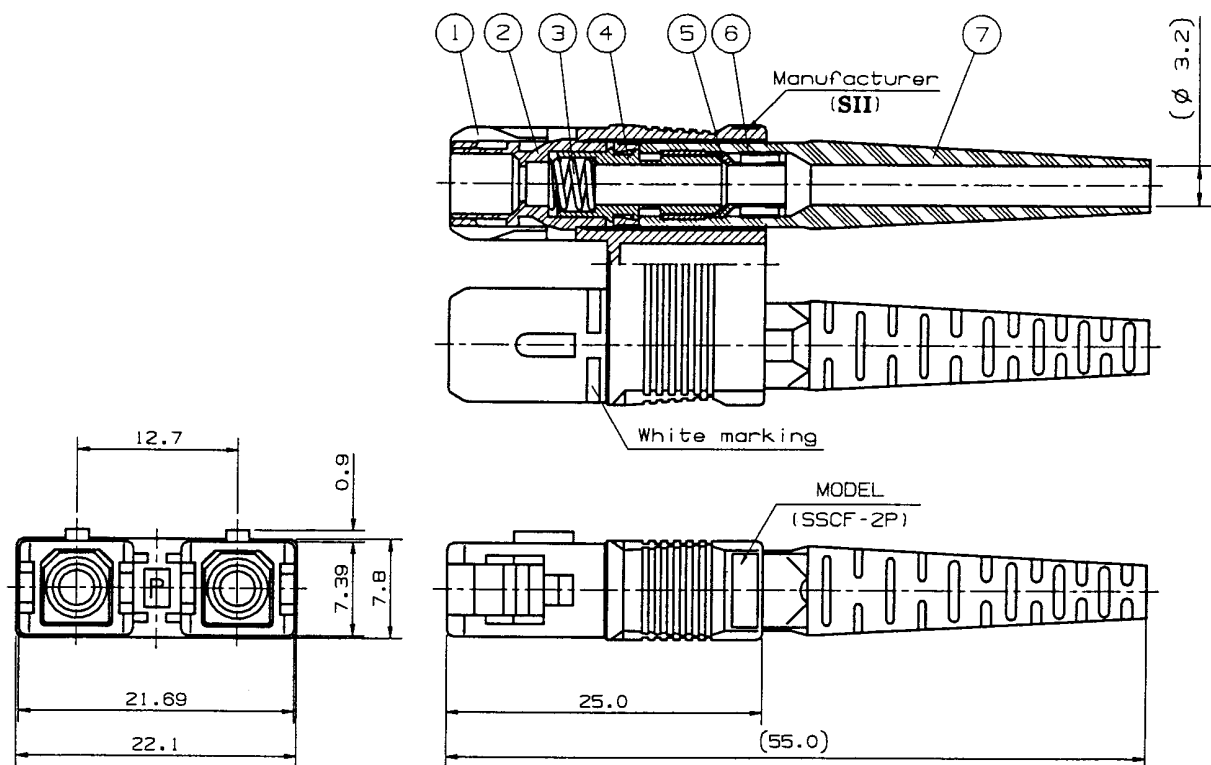
note.1: This drawing Shows the Tentatively assembled condition. In practice, the housing is not assembled like this.

note.2: This drawing does not include Caps.

Unit: mm

Figure 1 SSCF-2P3 HOUSING (Synthetic rubber Hood type)



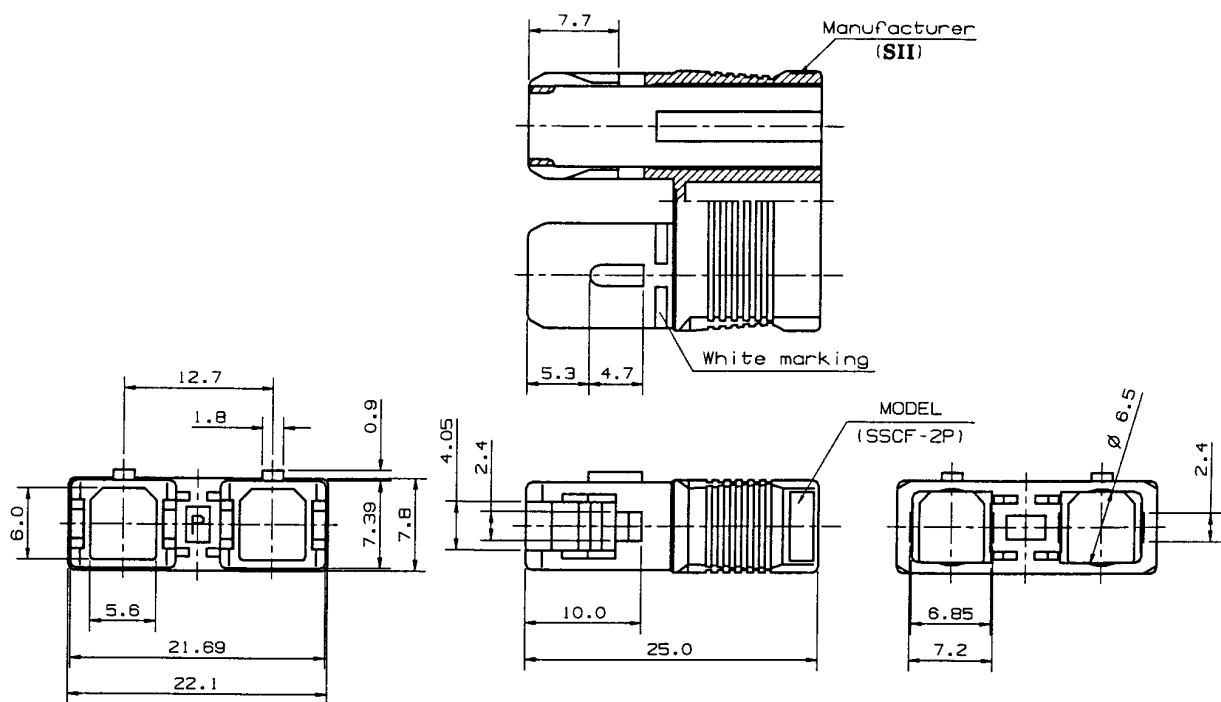


note.1: This drawing Shows the Tentatively assembled condition. In practice, the housing is not assembled like this.

note.2: This drawing does not include Caps.

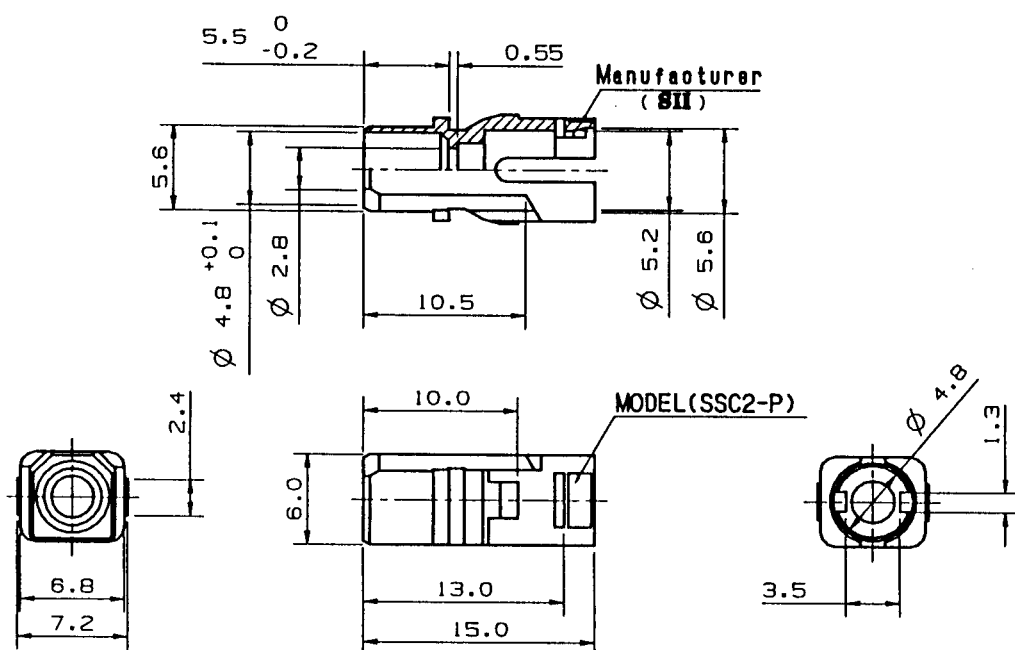
Unit: mm

Figure 2 SSCF-2P3 HOUSING (Plastic Hood type)



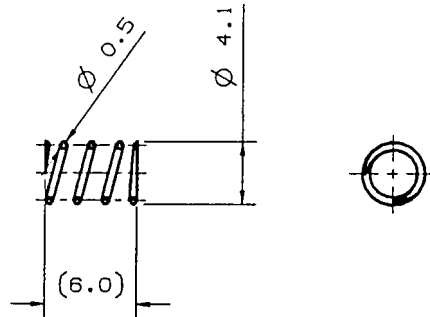
Unit: mm

Figure 3 ① Grip



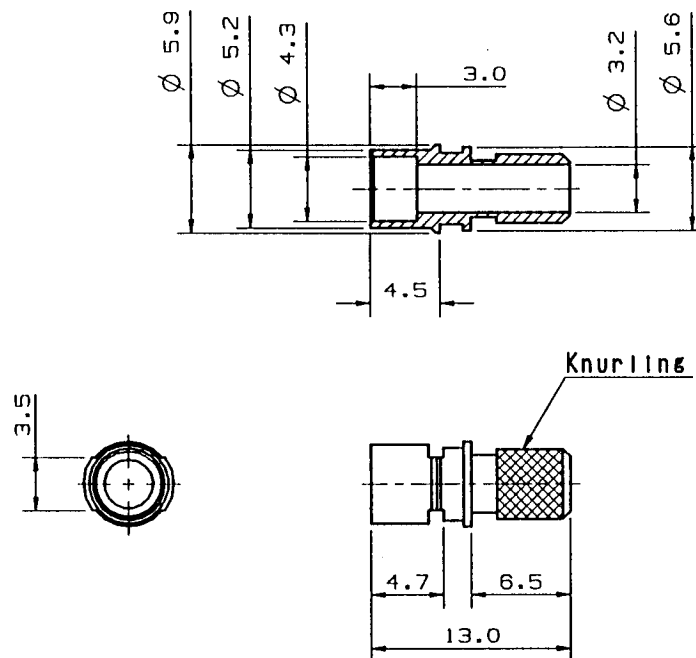
Unit: mm

Figure 4 ② Plug frame



Unit: mm

Figure 5 ③ Spring



Unit: mm

Figure 6 ④ Stop ring

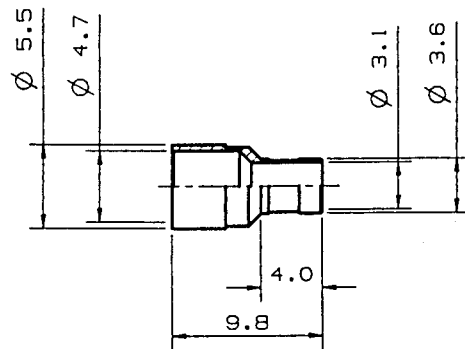


Figure 7 ⑤ Crimping ring

Unit: mm

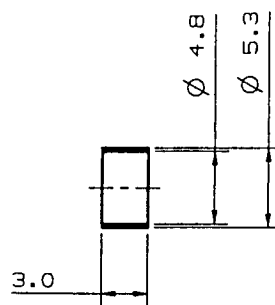
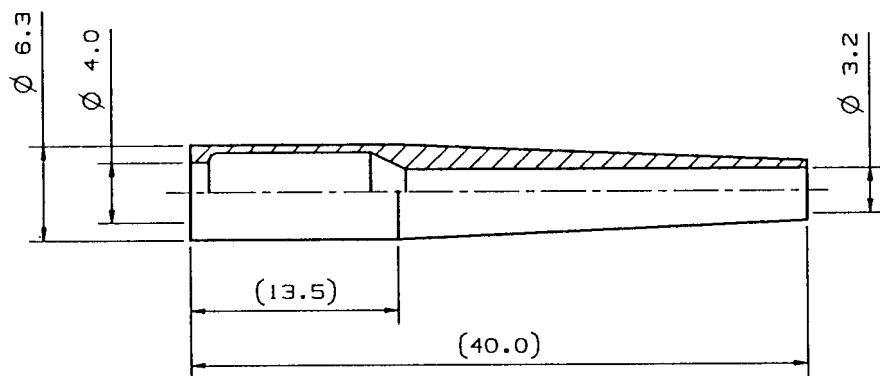


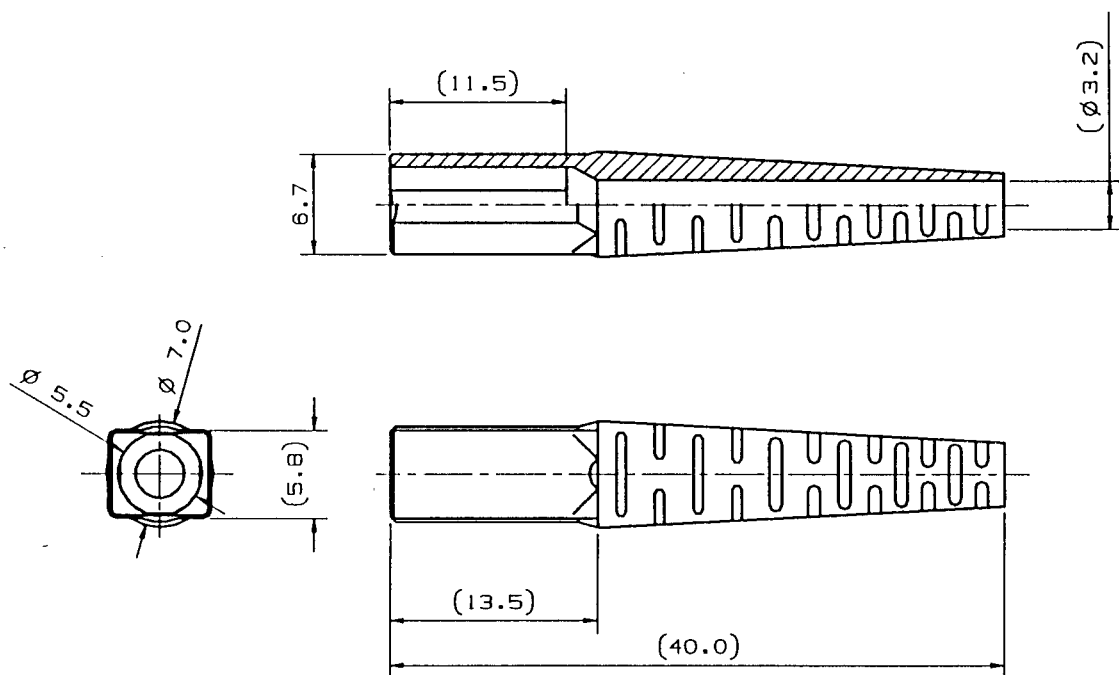
Figure 8 ⑥ Ring

Unit: mm



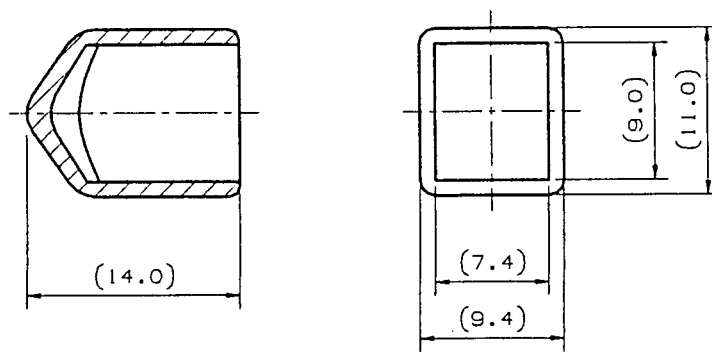
Unit: mm

Figure 9 ⑦-aHood



Unit: mm

Figure 10 ⑦-aHood



Unit: mm

Figure 11 ⑧ Cap