

SRF851NCC31K

OSYSTEM.....cdmaOne Rx FILTER
 OCARRIER FREQUENCY..... 832~870 MHz

ELECTRICAL CHARACTERISTICS

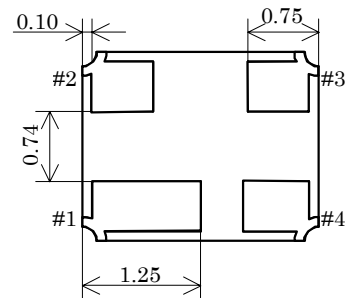
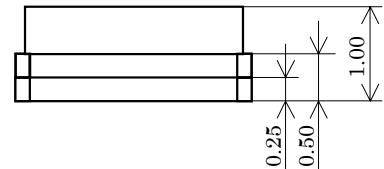
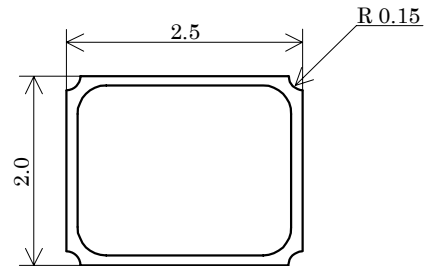
Ta = -30 ~ +85°C

Items	Conditions [MHz]	Min.	Typ.*	Max.	Unit
Maximum insertion loss in pass band	832~ 870	-	1.8	3.1	dB
Pass band flatness	832~ 870	-	1.2	2.5	dB
Out of band rejection (Absolute value)	612~ 650	30	37	-	dB
	720~ 760	30	39	-	dB
	887~ 925	20	24	-	dB
Pass band VSWR	832~ 870	-	2.3	3.0	-
Nominal impedance		-	50	-	Ω

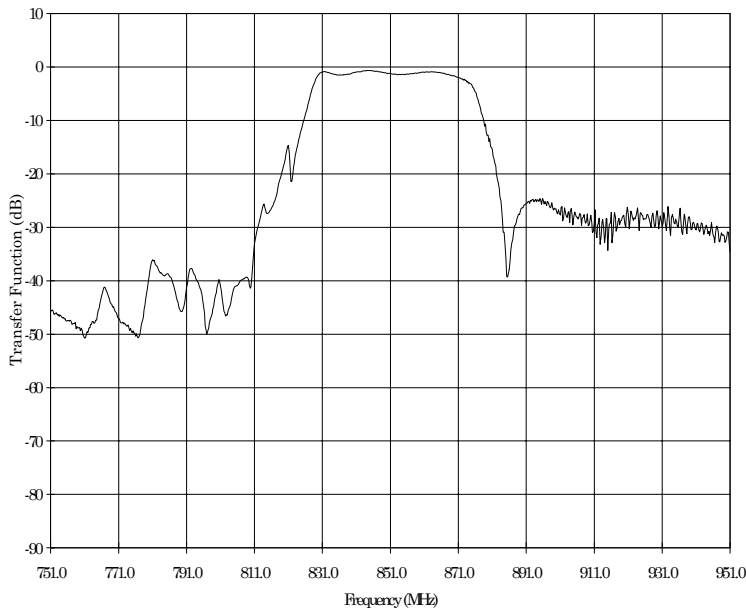
*Typical values are specified at 25°C

PACKAGE DIMENSION

Unit : mm



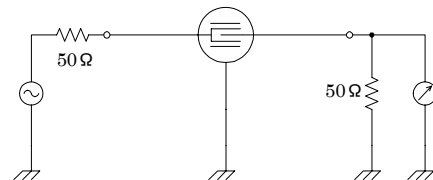
FREQUENCY CHARACTERISTICS



TERMINATIONS

- #1. GROUND
- #2. INPUT
- #3. GROUND
- #4. OUTPUT

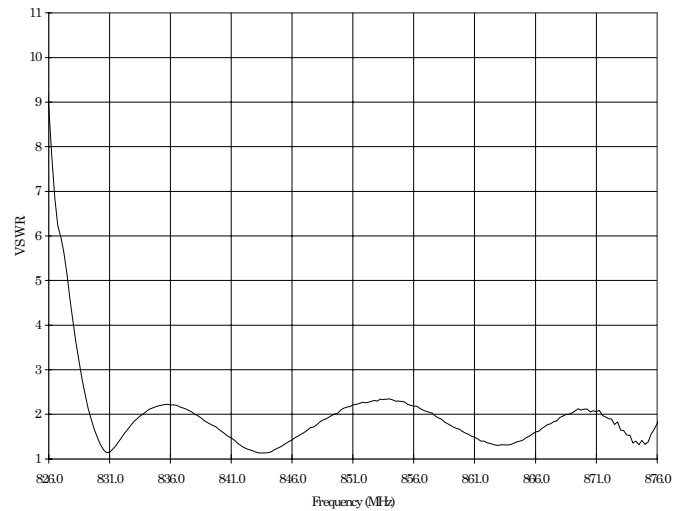
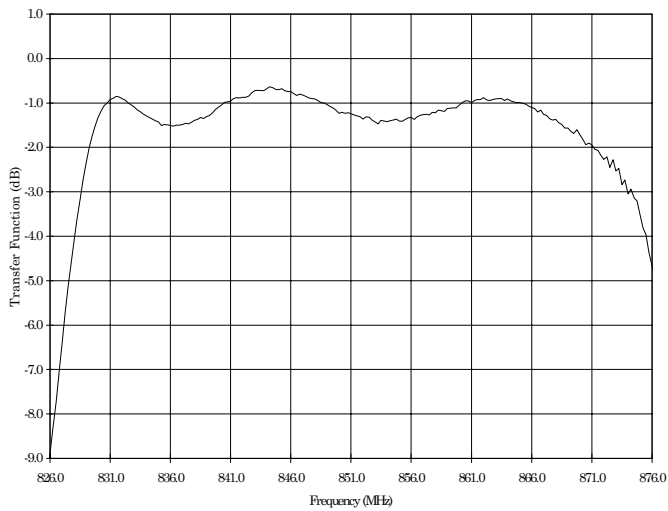
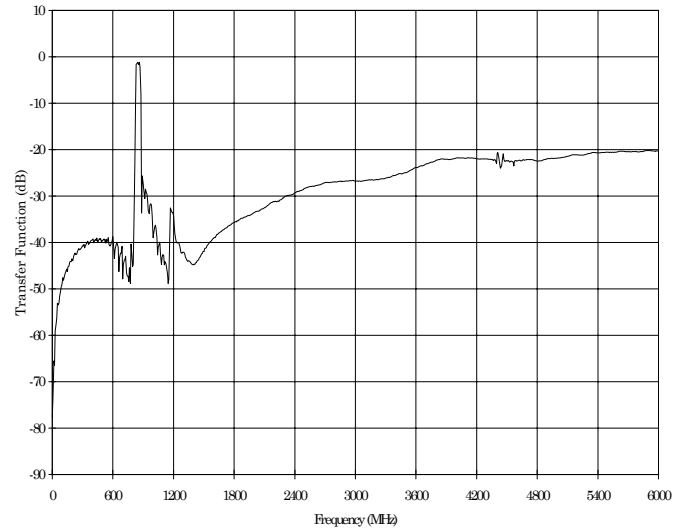
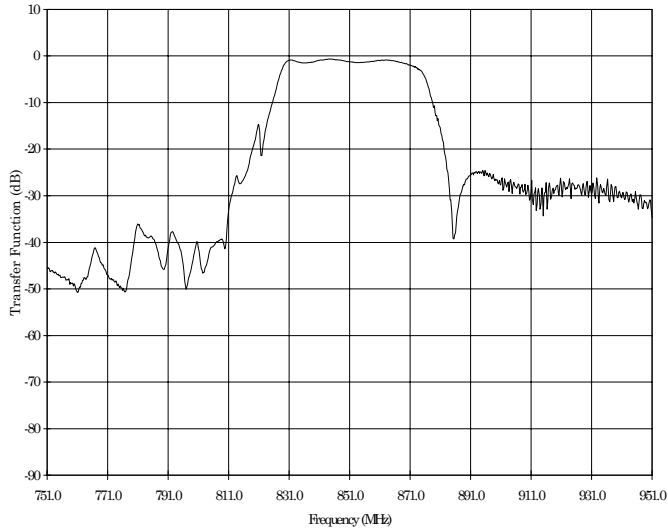
MEASUREMENT CIRCUIT



* The information contained herein is presented only as a guide for the applications of our products. No responsibility is assumed by Fujitsu Media Devices for any infringements of patents or other rights of the third parties which may result from its use. No license is granted by implication or otherwise under any patent or patent rights of Fujitsu Media Devices or others.
 * The information contained herein may be changed without prior notice. It is therefore advisable to contact Fujitsu Media Devices before proceeding with the design of equipment incorporating this product.

FUJITSU MEDIA DEVICES
SRF851NCC31K

FREQUENCY CHARACTERISTICS



ABSOLUTE MAXIMUM RATINGS (Ta=25°C)

(Ta = 25°C unless otherwise noted)

Items	Electrodes	Ratings	Notes
DC voltage	Between any two electrodes	0 V	
Input power	Between input and ground	13 dBm	
Operating temp.		-30 ~ +85 °C	
Storage temp.		-40 ~ +85 °C	