

SAP-1 Series

Single-Mode FC HOUSING

TECHNICAL SPECIFICATIONS

Seiko Instruments Inc.

Components Sales Dept.

8, Nakase 1-Chome

Mihama-ku, Chiba-shi, Chiba-ken

261 JAPAN

Telephone : 043-211-1214

-1215

Facsimile : 043-211-8035

SAP-1 Series Single-Mode FC HOUSING TECHNICAL SPECIFICATIONS

Document Number NCD-5DB2-02

NAE63D01 " SAP-1 Part "	May 1986
NCD-5DB2-01	December 1995
NCD-5DB2-02	July 1996

Copyright 1986, 1995, 1996 by **Seiko Instruments Inc.**
All right reserved.

The information contained herein shall not reproduced or disclosed to any third party without the express written consent of **SII**.

The Specifications contained herein are subject to change without notice.

SII is a trademark of **Seiko Instruments Inc.**

Please address any questions, comments, and suggestions to:

Seiko Instruments USA Inc.

Electronics Components Division
2990 West Lomita Boulevard
Torrance, CA 90505, U.S.A.
Phone: 310-517-7780
Fax: 310-517-7792

Seiko Instruments (H.K.) Ltd.

Sales Department
4th & 5th Floor, Wyler Center 2
200 Tai Lin Pai Road, Kwai Chung
N.T., Kowloon, Hong Kong
Phone: 852-2421-8611
Fax: 852-2480-5479

Seiko Instruments Singapore pte. Ltd.

2, Marsiling Lane,
Woodlands New Town,
Singapore, 2573, Singapore
Phone: 65-2691370
Fax: 65-2699729

Seiko Instruments GmbH

OFC Division
Siemensstraße 9b
D-63263 Neu-Isenburg, Germany
Phone: 06102-297-0
Fax: 06102-297-211

Seiko Instruments Taiwan Inc.

Sales Department
5F-1, No.99, Sec. 2, Chung Shan
Rd.
Taipei 104, Taiwan, R.O.C.
Phone: 02-563-5001, 523-5111
Fax: 02-521-9519

TABLE OF CONTENTS

Section	Page
1. PROVISION	1
1.1 Application Limit	1
2. PARTS NUMBER	1
3. GENERAL SPECIFICATIONS	2
3.1 Parts and Materials	2
3.2 Physical Dimensions	2
3.3 General Tolerances	2
4. PACKING	3

Table

Table 1	Parts Number	1
Table 2	Parts and Materials	2
Table 3	General Tolerance	2

Figure

Figure 1	SAP-1 Housing	4
Figure 2 to 15	Part Dimensions	5 to 10

1. PROVISION

1.1 Application Limit

These specifications apply to the SAP-1 Single-Mode FC HOUSING supplied by SII.

2. PARTS NUMBER

Parts Number of the Housing is Shown in Table 1.

Table 1 Parts Number

MODEL Number		Type Number					
SAP - 1		1	3	1	2	4	0 0

Hood Color	
0	No hood
1	Black
2	Red
3	White
4	Grey
6	Deep Green
7	Yellow

(Required)	
0 0	

Package	
0	
1	
2	
3	Non assy
4	Pre-assy

Cap	
0	No Cap
1	Black
2	Black with strings
3	White Plastic

Hood I.D.	
0	No hood
2	φ 2.0mm
3	φ 3.0mm
4	φ 2.6mm

Marking of Hood	
0	Without Marking
1	SII Marking

note.1 Non assy : Key-ring not built-in Frame (within Package).

Pre-assy : Key-ring not built-in Frame (within Package).

note.2 SII Marking : SII ●SAP-1 JAPAN

I.D. of hood	Without Marking	SII Marking
φ 2.0 mm	○	×
φ 2.6 mm	×	○
φ 3.0 mm	○	○

3. GENERAL SPECIFICATIONS

3.1 Parts and Materials

Parts and the materials are shown in Table 2.

Table 2 Parts and materials

No.	Part Name	Q'ty	Material	Notes
①	Frame	1	Stainless Steel	--
②	Keyring	1	Beryllium Copper	--
③	Washer	1	Phosphor Bronze	Nickel Plating
④	Spring	1	Stainless Steel	--
⑤	Coupling nut	1	Brass	Nickel Plating
⑥	Stopper	1	Brass	Nickel Plating
⑦	Bush	1	Brass	Nickel Plating
⑧	Holder	1	Brass	Nickel Plating
⑨-1	Hood (for $\phi 2.0\text{mm}$)	(1)	Synthetic Rubber	Hood Color , Hood Marking Shows Table 1
⑨-2	Hood (for $\phi 2.6\text{mm}$)	(1)	Synthetic Rubber	Hood Color , Hood Marking Shows Table 1
⑨-3	Hood (for $\phi 3.0\text{mm}$)	(1)	Synthetic Rubber	Hood Color , Hood Marking Shows Table 1
⑩-1	Cap	(1)	PVC	Black
⑩-2	Cap	(1)	Synthetic Rubber	with Strings, Black
⑩-3	Cap	(1)	Plastics	White

3.2 Physical Dimensions

Figure 1 shows the assembled state of SAP-1.

Figure 2 to 15 show the part dimension.

- In accordance with JIS C5970 F01 type connectors

3.3 General Tolerances

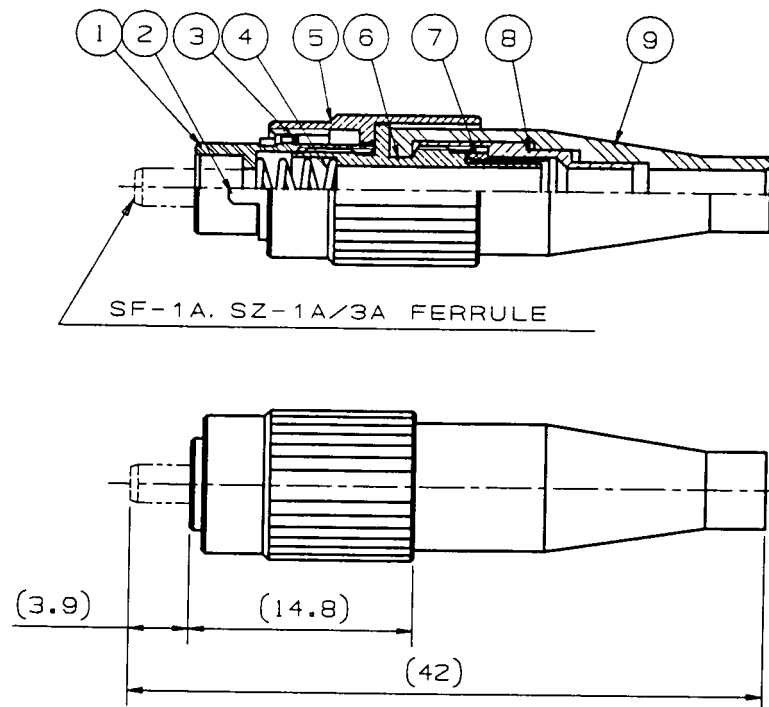
Permissible deviation in dimensions without tolerance indication is in accordance with JIS B 0405 class m, as shown in Table 3.

Table 3 General tolerance (JIS B 0405 class m)

Basic size step (mm)		Permissible deviation (mm)
Over	Under	
0.5	3	± 0.1
3	6	± 0.1
6	30	± 0.2
30	120	± 0.3

4. PACKING

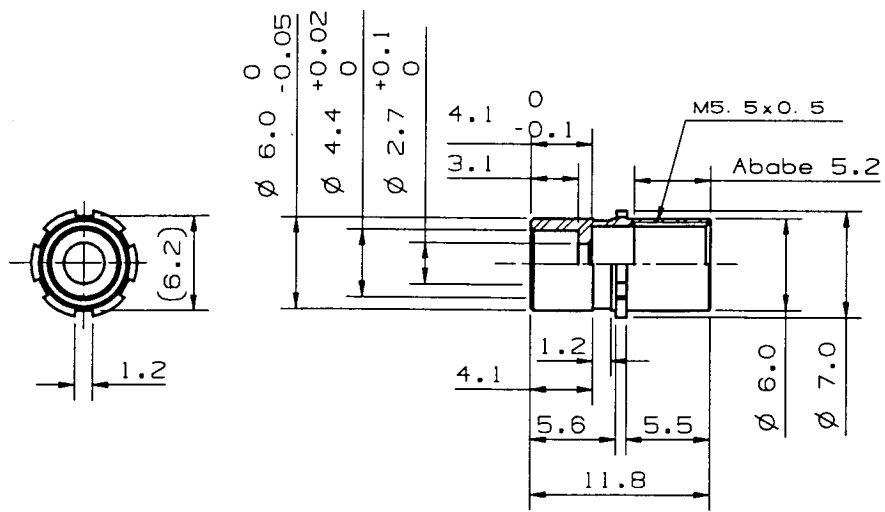
The product is packed to prevent damage during shipment.



note.1: This drawing does not include Caps.

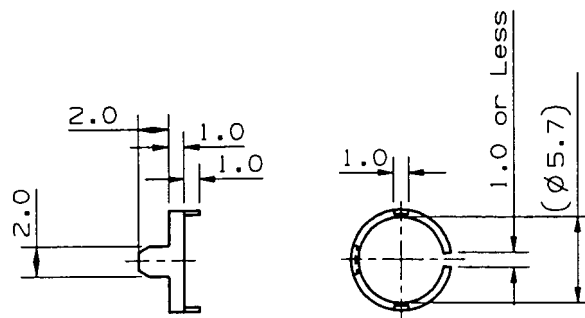
Unit: mm

Figure 1 SAP-1 HOUSING



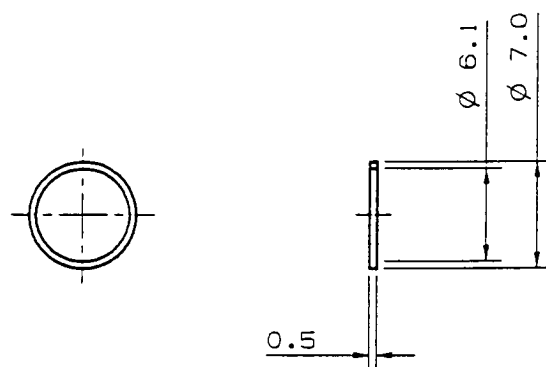
Unit: mm

Figure 2 ① Frame



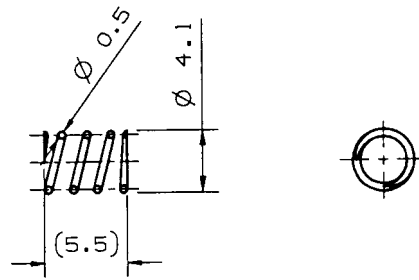
Unit: mm

Figure 3 ② Keyring



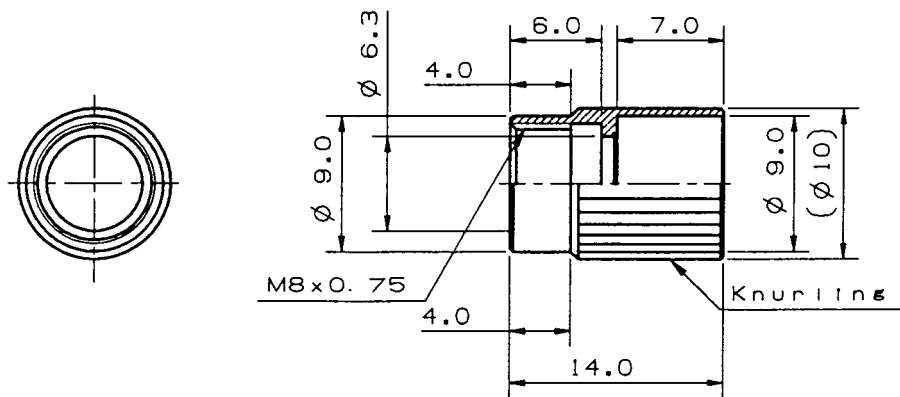
Unit: mm

Figure 4 ③ Washer



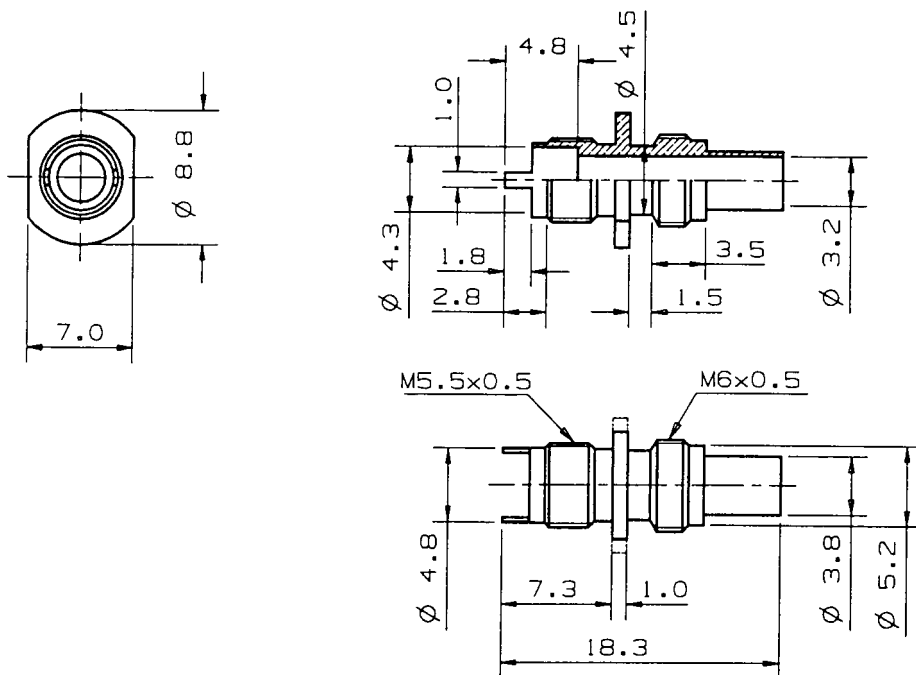
Unit: mm

Figure 5 ④ Spring



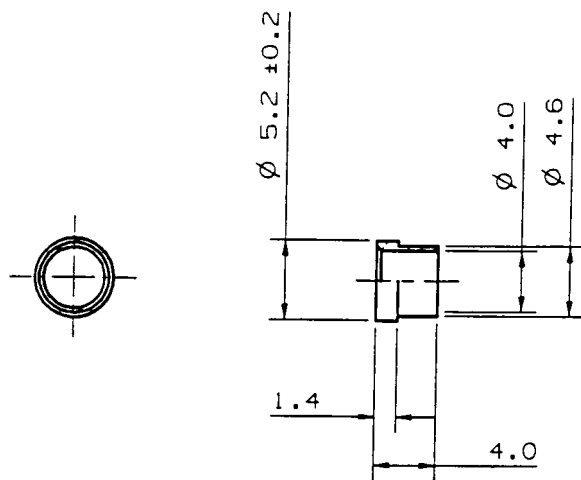
Unit: mm

Figure 6 ⑤ Coupling nut



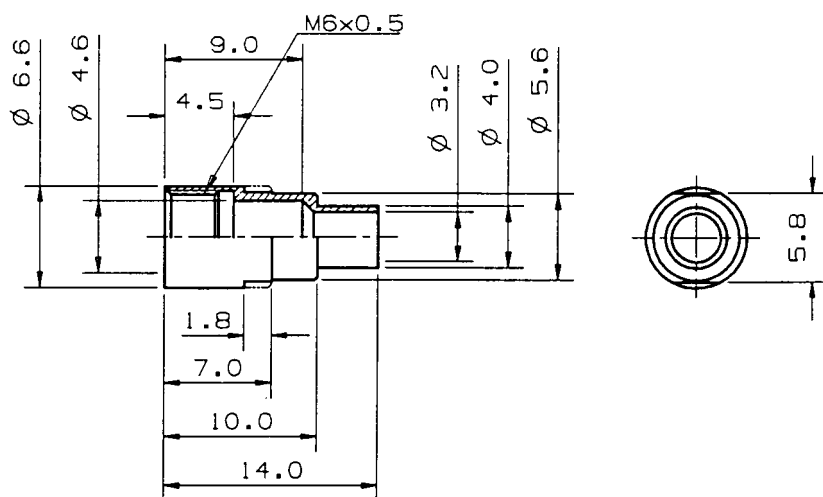
Unit: mm

Figure 7 ⑥ Stopper



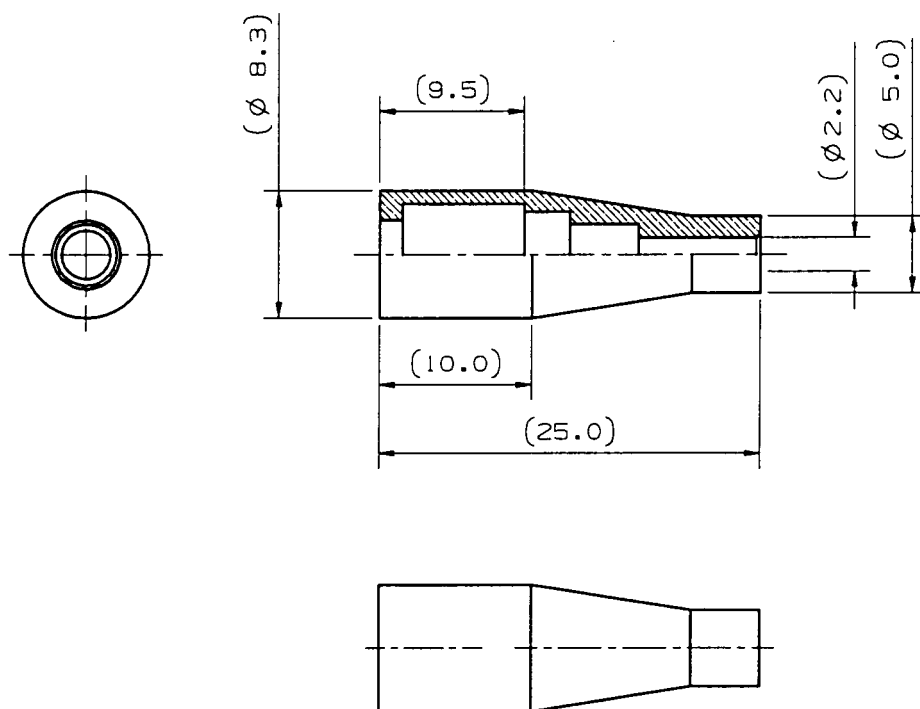
Unit: mm

Figure 8 ⑦ Bush



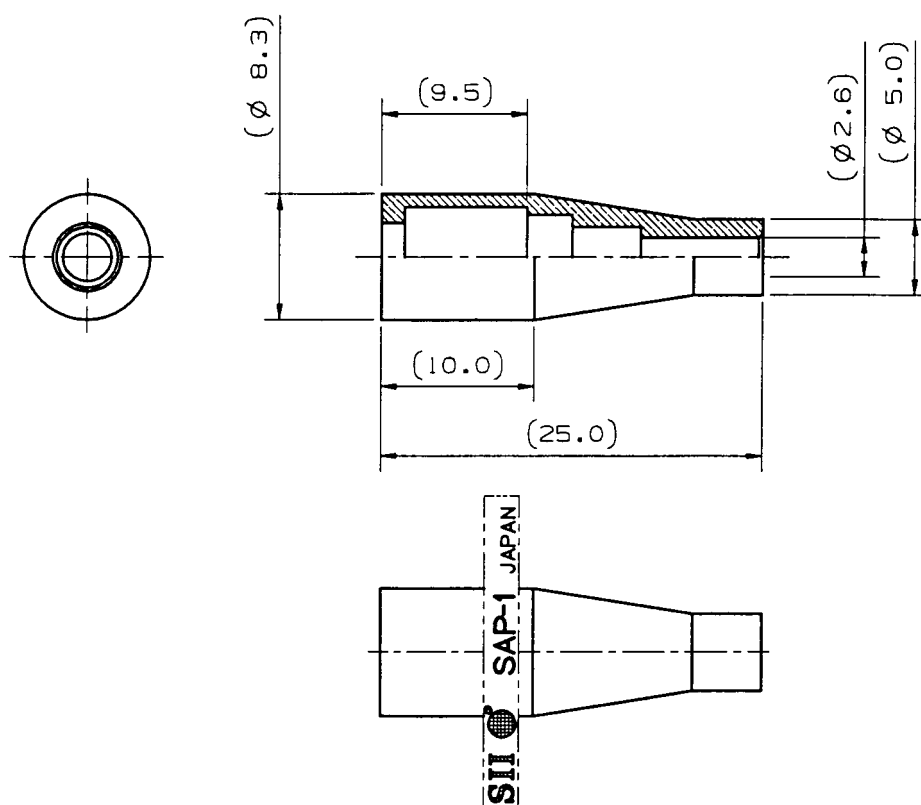
Unit: mm

Figure 9 ⑧ Holder



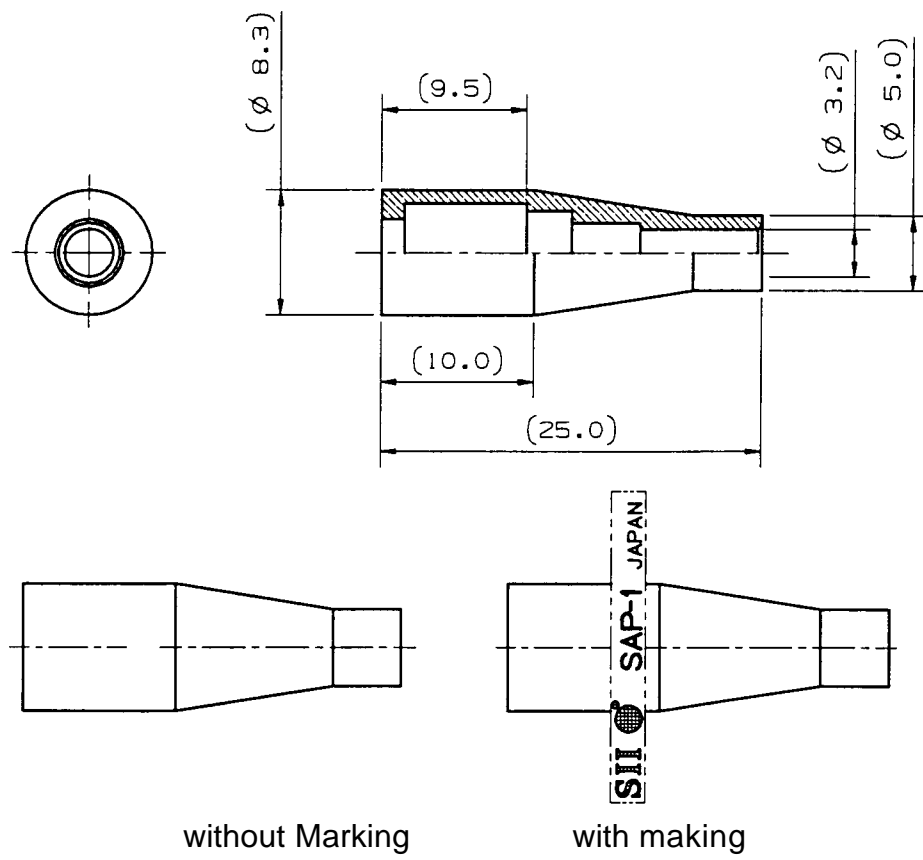
Unit: mm

Figure 10 ⑨-1 Hood (for $\phi 2.0\text{mm}$)



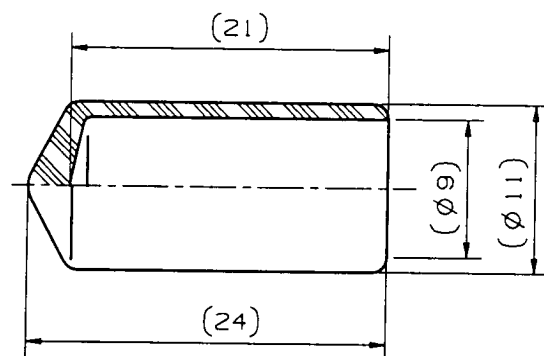
Unit: mm

Figure 11 ⑨-2 Hood (for $\phi 2.6\text{mm}$)



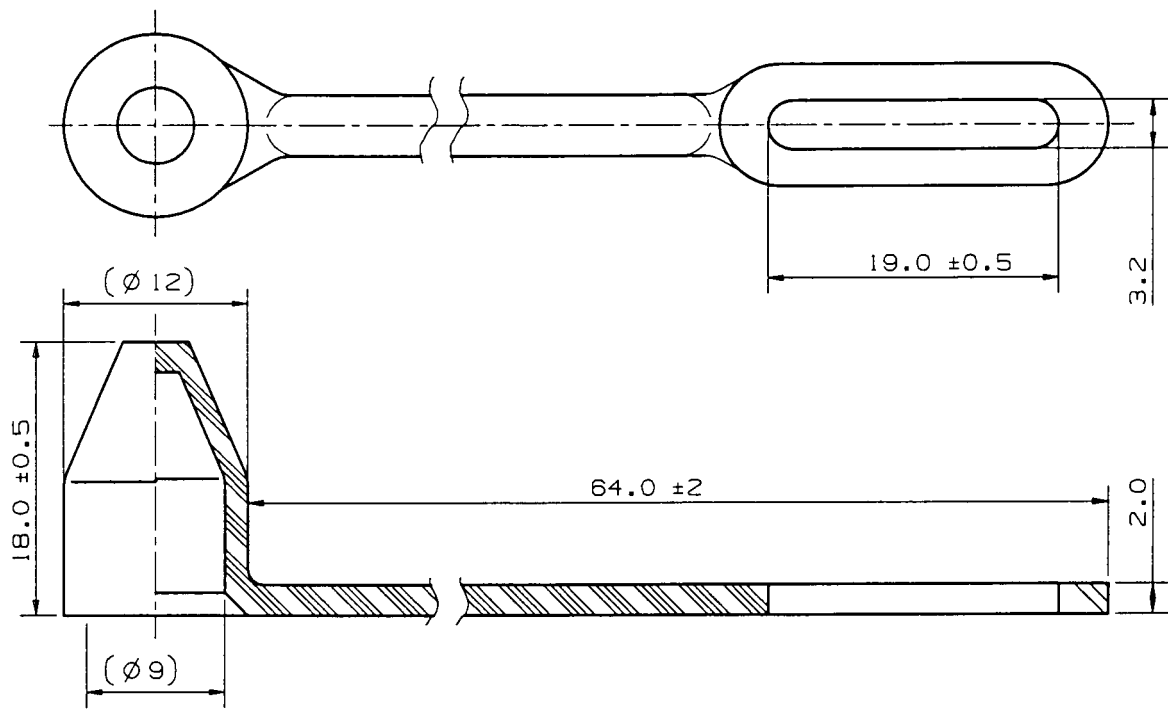
Unit: mm

Figure 12 ⑨-3 Hood (for $\phi 3.0\text{mm}$)



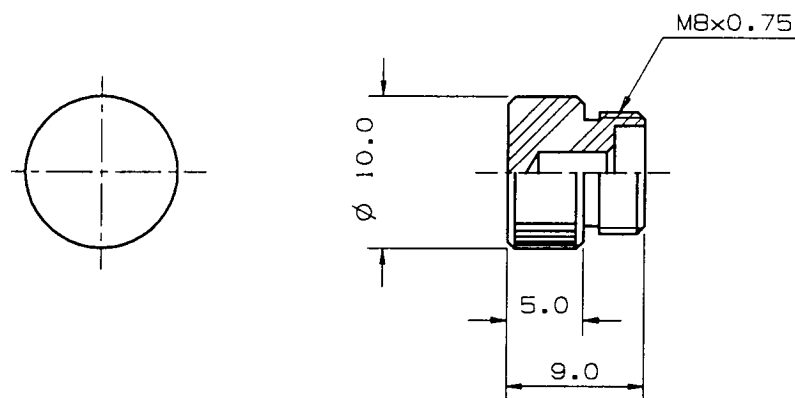
Unit: mm

Figure 13 ⑩-1 Cap



Unit: mm

Figure 14 ⑩-2 Cap



Unit: mm

Figure 15 ⑩-3 Cap