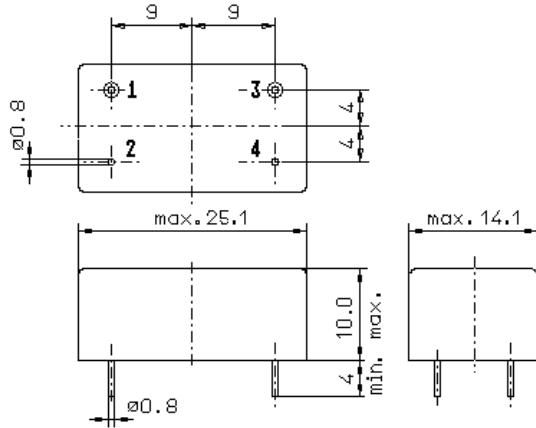


Specification for monolithic crystal filter:

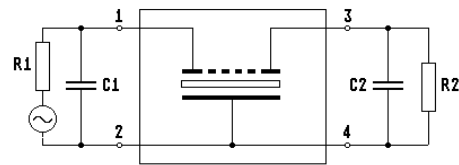
MQF 45.0-3000/32

1. General

1.1. Package:



GM3



- 1.2. Type name: MQF 45.0-3000/32
- 1.3. Number of poles: 6
- 1.4. Operating temperature range: -55°C to +85°C
- 1.5. Storage temperature range: -55°C to +85°C

2. Electric values

- 2.1. Nominal centre frequency fo: 45.0 MHz
- 2.2. **Pass band**
 - 2.2.1. Bandwidth between 3 dB - frequencies: > fo ± 15.0 kHz
 - 2.2.2. Ripple: < 1.0 dB at fo ± 10.0 kHz
 - 2.2.3. Insertion loss: < 4.0 dB
(measured on smallest attenuation in pass band)
- 2.3. **Stop band**
 - 2.3.1. fo ± 62 kHz > 70 dB
 - 2.3.2. fo ± 73 kHz > 80 dB
 - 2.3.3. Spurious responses > 50 dB
 - 2.3.4. Alternate Attenuation > 80 dB (except spurious)
- 2.4.1. Nominal input power level +5 dBm
- 2.4.2. Maximal input power level +20 dBm
- 2.5. Terminating impedance R//C (input and output): 50 Ω // 0 pF
- 3. Marking on the package: manufacturer, date code
MQF 45.0-3000/32
- 4. Environment conditions: Corresponding to Telefilter CF001

Edited by: _____ date: _____ name: _____