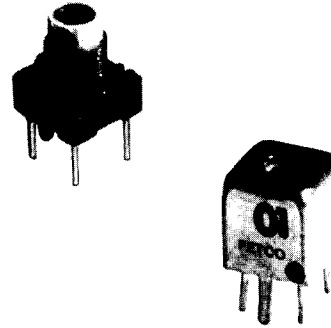


RF TUNEABLE COILS - 7MM

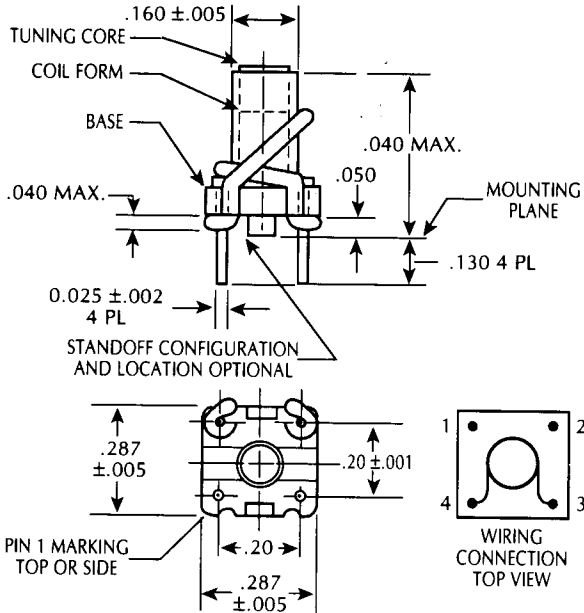
Features:

- Standard inductance values range from 0.046 μ H to 0.540 μ H
- Coil form material is a glass epoxy lamination for higher temperature
- Available unshielded or shielded with an optional plated brass can that provides shielding and mechanical stability
- Core does not protrude past coil form between min. & max. settings
- Tapped windings, and numerous core materials and core lengths are available for custom designs - Consult Factory

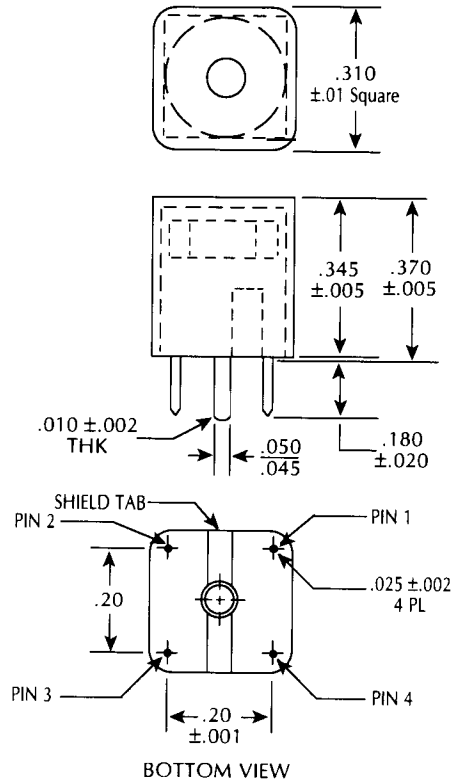


DIMENSIONS (Inches)

Unshielded



Shielded



Notes:

1. Standard core materials are Carbonyl SF, E, and J.
2. All "Q" measurements are made on a HP-4342A "Q" meter.
3. Inductance measurements are made on a HP-4191A.

FETCO ORDERING INFORMATION

FTRF - 2 - 0.135

1 2 3

1. FETCO type
2. Unshielded: (1) or Shielded: (2)
3. Inductance value @ Nominal

**ELECTRICAL SPECIFICATIONS @ 25°C -
UNSHIELDED**

FETCO TYPE	INDUCTANCE μH				Q MINIMUM @ NOMINAL	TEST FREQUENCY MHz
	NO CORE	MINIMUM	NOMINAL	MAXIMUM		
FTRF	.045	.046	.050	.054	88	50
FTRF	.050	.052	.057	.062	90	
FTRF	.059	.060	.069	.078	100	
FTRF	.065	.068	.078	.088	100	
FTRF	.078	.082	.098	.114	100	
FTRF	.086	.090	.108	.126	100	
FTRF	.095	.108	.130	.154	114	
FTRF	.116	.136	.165	.193	114	
FTRF	.140	.148	.190	.232	88	
FTRF	.167	.188	.240	.292	78	
FTRF	.198	.231	.292	.350	72	
FTRF	.228	.272	.342	.412	68	
FTRF	.264	.330	.405	.480	67	
FTRF	.292	.390	.465	.540	61	

**ELECTRICAL SPECIFICATIONS @ 25°C -
SHIELDED**

FETCO TYPE	INDUCTANCE μH				Q MINIMUM @ NOMINAL	TEST FREQUENCY MHz
	NO CORE	MINIMUM	NOMINAL	MAXIMUM		
FTRF	.044	.045	.046	.049	76	50
FTRF	.047	.048	.051	.054	78	
FTRF	.054	.056	.060	.064	80	
FTRF	.059	.062	.065	.068	78	
FTRF	.068	.071	.076	.081	84	
FTRF	.075	.080	.085	.090	78	
FTRF	.083	.086	.095	.104	85	
FTRF	.095	.100	.110	.120	78	
FTRF	.115	.120	.135	.150	76	
FTRF	.136	.142	.163	.184	72	
FTRF	.155	.172	.194	.216	68	
FTRF	.176	.200	.224	.248	66	
FTRF	.202	.234	.260	.284	60	
FTRF	.224	.260	.288	.315	56	