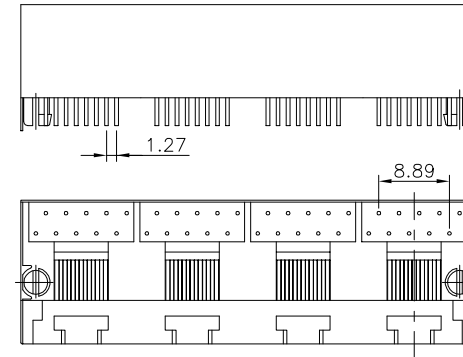
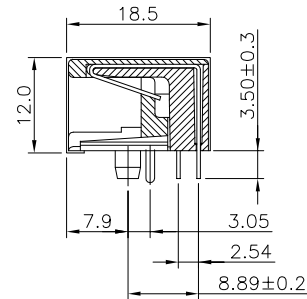
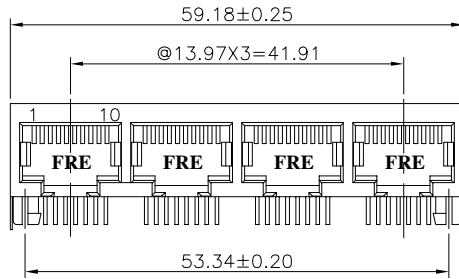


REVISION RECORD				
REV	ECO	DESCRIPTION	DRFT	CHKD
△		DELETE METAL LEG & ADD NOTES	Aaron	07/04/2005



NOTES:

ELECTRICAL:

- VOLTAGE RATING : 125 VAC RMS.
- CURRENT RATING : 1.5 AMP.
- CONTACT RESISTANCE : 30 MILLIOHMS MAX.
- INSULATION RESISTANCE: 1000 MEGOHMS MIN @ 500 VDC.
- DIELECTRIC STRENGTH : 1000 VAC RMS 60Hz, 1MIN.

MECHANICAL:

- HOUSING MATERIAL : GLASS FILLED POLYESTER UL94V-0.
- CONTACT MATERIAL : PHOSPHOR BRONZE ϕ 0.46mm.
- PLATING : GOLD PLATING OVER NICKEL.
- OPERATING LIFE : 750 CYCLES MIN.
- PCB RETENTION PRE-SOLDER : 1 LB MIN.
- PCB RETENTION POST-SOLDER: 10 LBS MIN.

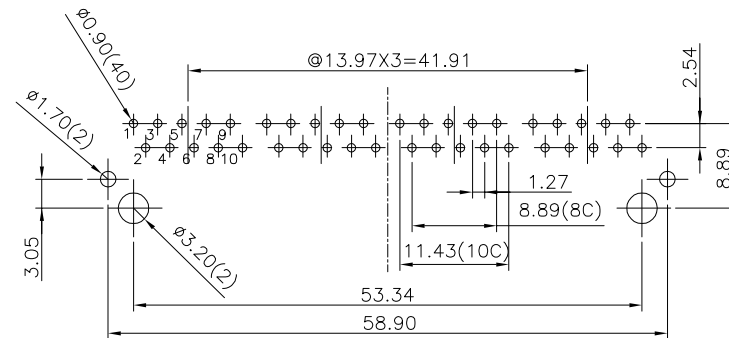
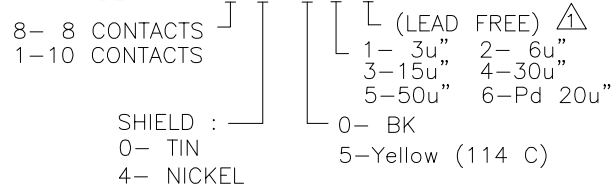
ENVIRONMENTAL:

- STORAGE : -40°C TO +85°C.
- OPERATION: -40°C TO +85°C

MATES WITH MODULAR PLUG CONFORMING TO

FCC PART 68, SUBPART F.

PART NUMBER: E560X-X2CX6X-L



PC Board Layout T=1.60mm

Component Side Shown

DETACHED LISTS	MM (INCH)	DFTO chloe	DATE 2005/06/10	FULL RISE ELECTRONIC CO., LTD	
	TOLERANCES EXCEPT AS NOTED	CHKD Jeri Chi	DATE 07/05/05'		
	MM	MFO Izou	DATE 07/05/05'	TITLE (ROHS) 11.5 SIDE ENTRY PCB GANG JACK 10P	
	.0 ±0.20 .00 ±0.15 .000 ±0.075	APPVLYUAN	DATE 07/05/05'		
ANGLES ±	QTY :	DRAWING NO. GE563164-LC		SIZE A3	REV 1
THIRD ANGLE PROJECTION	FINISH :	/PART NO. SEE NOTE		DO NOT SCALE DRAWING	
	SCALE : 1:1	SHEET 1 OF 1			