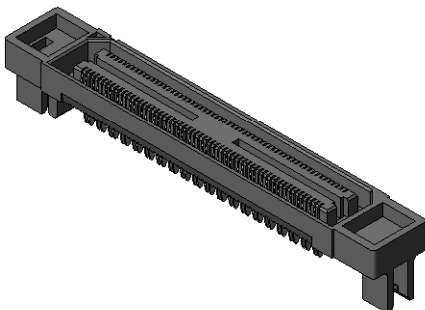
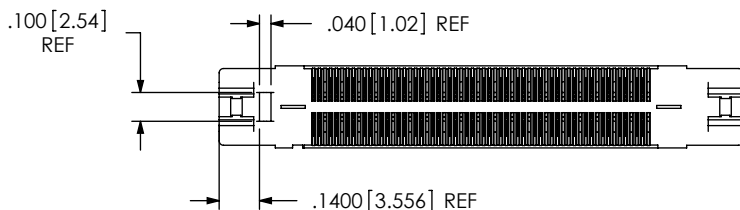
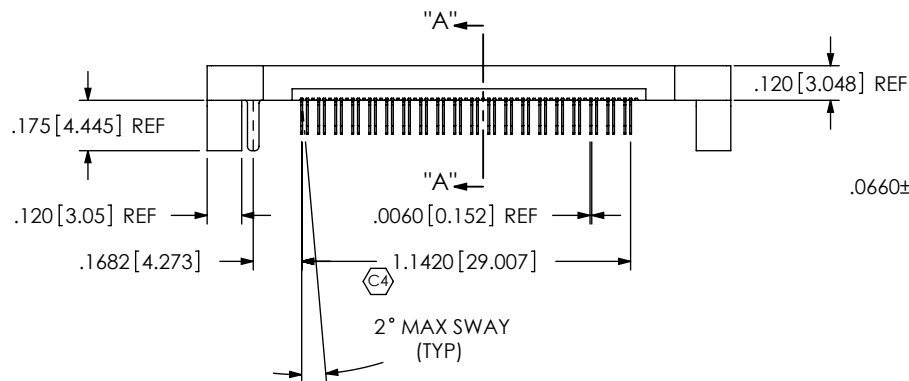
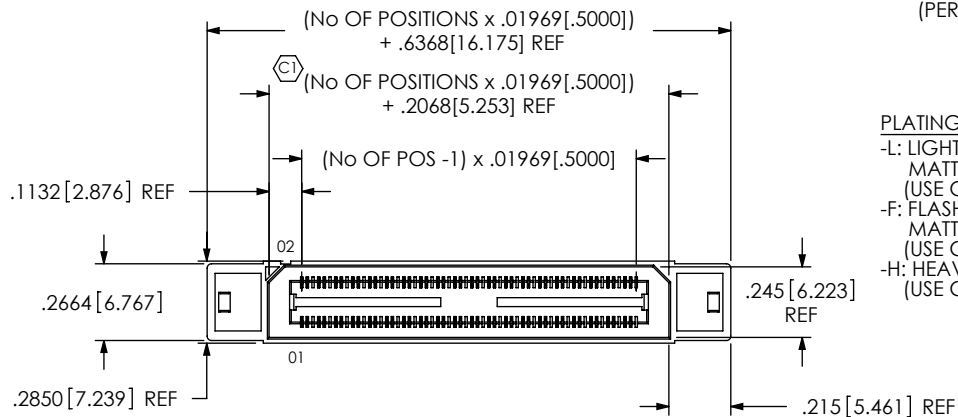


ASO ONLY (APPLICATION SPECIFIC ORDER)

FIG. 1
BSH-040-01-X-D-DP-EMX



BSH-XXX-01-X-D-DP-EMX

No OF POSITIONS
-020, -040, -060,
*-080, *-100, *-120
(PER ROW)

LEAD STYLE
-01

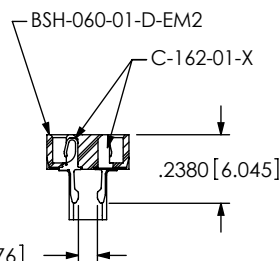
PLATING SPECIFICATION
-L: LIGHT SELECTIVE GOLD,
MATTE TIN TAILS
(USE C-162-XX-L-2)
-F: FLASH SELECTIVE GOLD,
MATTE TIN TAILS
(USE C-162-XX-F-2)
-H: HEAVY GOLD
(USE C-162-XX-H-2)

EDGE MOUNT THICKNESS
-EM2: .064[1.63] ±.004 PCB (USE
BSH-XXX-01-D-EM2 & C-162-01-X-2)
-EM3: (USE BSH-XXX-01-D-EM3
& C-162-02-X-2) SEE NOTE 6

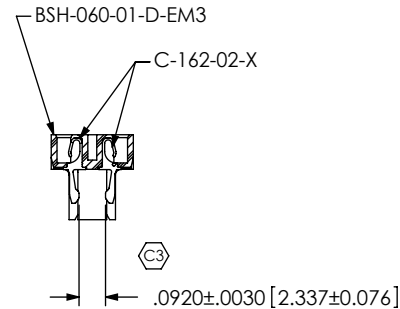
DIFFERENTIAL PAIR

ROW SPECIFICATION
-D: DOUBLE (USE BSH-XXX-01-D-EMX)

* = SEE NOTE 7



SECTION "A-A"
EDGE MOUNT THICKNESS
-EM2: .064[1.63] ±.004 PCB

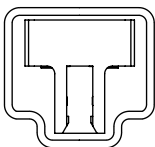


SECTION "A-A"
EDGE MOUNT THICKNESS
-EM3:
SEE NOTE 6
(DIFFERENT AS SHOWN, OTHERWISE
SAME AS -EM2 PCB THICKNESS)

NOTES:

1. Ⓢ REPRESENTS A CRITICAL DIMENSION.
2. CONTACT RETENTION: 4 OZ MIN.
3. DELETED.
4. PARTS ARE "MOLD TO POSITION".
5. MAX VARIANCE OF .002.
6. -EM3 IS NOT A STANDARD OFFERING; AVAILABLE AS AN ASP ONLY. PLEASE CONTACT SAMTEC INTERCONNECT PROCESSING GROUP WITH ORDER INQUIRIES
7. FOR NEW APPLICATIONS REQUIRING THESE NUMBER OF POSITIONS, PLEASE CONTACT SAMTEC INTERCONNECT PROCESSING GROUP.

PACKAGING VIEW



TUBE: PT-1-24-02-38
PLUG: TP-03

UNLESS OTHERWISE SPECIFIED,
DIMENSIONS ARE IN INCHES.

TOLERANCES ARE:

DECIMALS ANGLES
.XX: ±.01[.3]
.XXX: ±.005[.13]
.XXXX: ±.0020[.051]

PROPRIETARY NOTE

THIS DOCUMENT CONTAINS INFORMATION
CONFIDENTIAL AND PROPRIETARY TO
SAMTEC, INC. AND SHALL NOT BE REPRODUCED
OR TRANSFERRED TO OTHER DOCUMENTS OR
DISCLOSED TO OTHERS OR USED FOR ANY
PURPOSE OTHER THAN THAT WHICH IT WAS
OBTAINED WITHOUT THE EXPRESSED WRITTEN
CONSENT OF SAMTEC, INC.

MATERIAL: DO NOT SCALE DRAWING
INSULATOR: VECTRA E130i, COLOR: BLACK
CONTACT: PHOS BRONZE, 510 SPRING TEMPER
THICKNESS: .0060

SHEET SCALE: 1.5:1

DESCRIPTION:
.5mm EDGE MOUNT DP SOCKET ASSEMBLY

DWG. NO.
BSH-XXX-01-X-D-DP-EMX

BY: CHAD F 5/31/2000 SHEET 1 OF 2

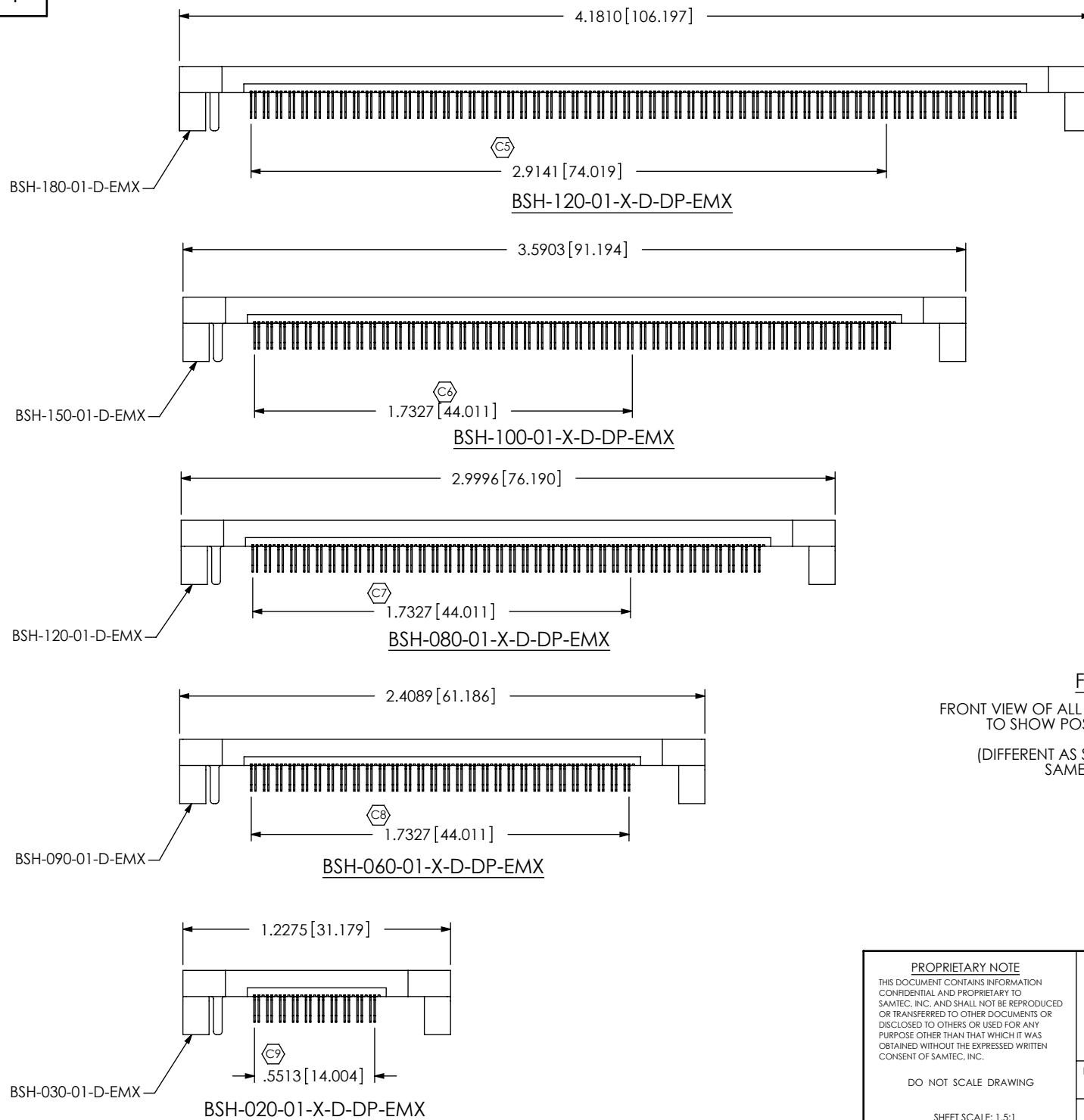


FIG. 2
 FRONT VIEW OF ALL POSITIONS (EXCEPT -040)
 TO SHOW POSITION LOCATIONS
 (DIFFERENT AS SHOWN, OTHERWISE
 SAME AS FIG. 1)

PROPRIETARY NOTE
 THIS DOCUMENT CONTAINS INFORMATION
 CONFIDENTIAL AND PROPRIETARY TO
 SAMTEC, INC. AND SHALL NOT BE REPRODUCED
 OR TRANSFERRED TO OTHER DOCUMENTS OR
 DISCLOSED TO OTHERS OR USED FOR ANY
 PURPOSE OTHER THAN THAT WHICH IT WAS
 OBTAINED WITHOUT THE EXPRESSED WRITTEN
 CONSENT OF SAMTEC, INC.

DO NOT SCALE DRAWING

SHEET SCALE: 1.5:1

samtec

520 PARK EAST BLVD, NEW ALBANY, IN 47150
 PHONE: 812-944-6733 FAX: 812-948-5047
 e-Mail: info@SAMTEC.com code: 55322

DESCRIPTION:
 .5mm EDGE MOUNT DP SOCKET ASSEMBLY

DWG. NO.
BSH-XXX-01-X-D-DP-EMX

BY: CHAD F 5/31/2000 SHEET 2 OF 2