



SAW Filters for Infrastructure Systems

Series/Type: **B3867**

The following products presented in this data sheet are being withdrawn.

Ordering Code	Substitute Product	Date of Withdrawal	Deadline Last Orders	Last Shipments
B39301B3867H510		2008-02-07	2008-07-31	2008-10-31

For further information please contact your nearest EPCOS sales office, which will also support you in selecting a suitable substitute. The addresses of our worldwide sales network are presented at www.epcos.com/sales.



SAW Components

B3867

Low-Loss Filter

300,0 MHz

Data Sheet

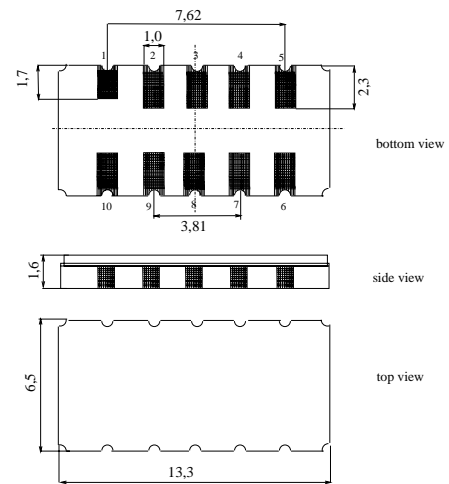
Ceramic package DCC12A

Features

- Low-loss IF filter for WLL
- Temperature stable
- High nearby selectivity
- Ceramic SMD package

Terminals

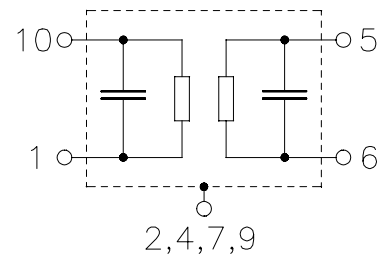
- Gold plated



Dimensions in mm, approx. weight 0,5 g

Pin configuration

- | | |
|------------|---------------|
| 10 | Input |
| 1 | Input ground |
| 5 | Output |
| 6 | Output ground |
| 3, 8 | Ground |
| 2, 4, 7, 9 | Case Ground |



Type	Ordering code	Marking and Package according to	Packing according to
B3867	B39301-B3867-H510	C61157-A7-A94	F61074-V8163-Z000

Electrostatic Sensitive Device (ESD)

Maximum ratings

Operable temperature range	T_A	- 40/+ 85	°C
Storage temperature range	T_{stg}	- 40/+ 85	°C
DC voltage	V_{DC}	0	V
Source power	P_s	0	dBm


SAW Components
B3867
Low-Loss Filter
300,0 MHz
Data Sheet
Characteristics

Operating temperature: $T_A = -30 \dots +70 \text{ }^\circ\text{C}$
 Terminating source impedance: $Z_S = 50 \text{ } \Omega$ and matching network
 Terminating load impedance: $Z_L = 50 \text{ } \Omega$ and matching network

		min.	typ.	max.	
Center frequency (center between 3dB points)	f_C	299,910	300,015	300,090	MHz
Minimum insertion attenuation (including matching network)	α_{\min}	—	18,0	19,0	dB
Passband width¹⁾					
$\alpha_{\text{rel}} \leq 3 \text{ dB}$	$B_{3,0\text{dB}}$	3,3	3,35	—	MHz
$\alpha_{\text{rel}} \leq 40 \text{ dB}$	$B_{40\text{dB}}$	—	4,75	4,8	MHz
Absolute group delay (at f_C)	τ	—	1,75	1,8	μs
Amplitude ripple (p-p) $f_C \pm 1,2 \text{ MHz}$	$\Delta\alpha$	—	0,8	1,1	dB
Group delay ripple (p-p) $f_C \pm 1,6 \text{ MHz}$	$\Delta\tau$	—	125	200	ns
Phase ripple (p-p) $f_C \pm 1,6 \text{ MHz}$	$\Delta\varphi$	—	5	10	$^\circ$
Return loss (Input and Output) $f_C \pm 1,6 \text{ MHz}$		10	12	—	dB
Triple Transit Suppression		37	38	—	dB
Relative attenuation (relative to α_{\min})²⁾ $f_C \pm 6 \text{ MHz} \dots f_C \pm 40 \text{ MHz}$	α_{rel}	45	50	—	dB
Temperature coefficient of frequency³⁾	TC_f	—	-0,036	—	ppm/K ²
Turnover temperature	T_0	—	20	—	$^\circ\text{C}$

1) all bandwidths are centered at f_C

2) apart from two peaks at or around $f_C + 21 \text{ MHz}$ with typically 45 dB attenuation

3) Temperature dependence of f_C : $f_C(T_A) = f_C(T_0)(1 + TC_f(T_A - T_0)^2)$



SAW Components

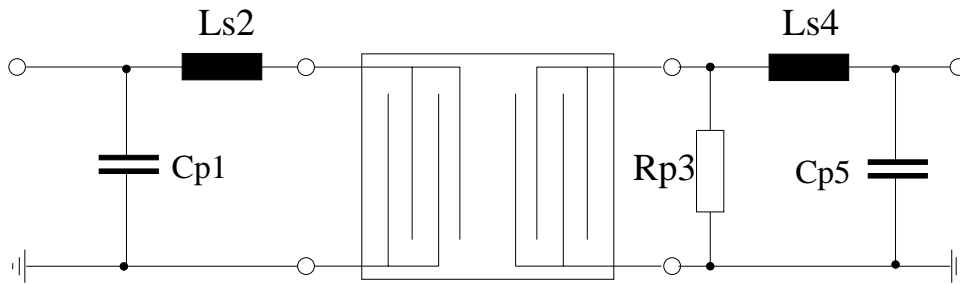
B3867

Low-Loss Filter

300,0 MHz

Data Sheet

Matching network (Element values depend upon PCB layout):



$$C_{p1} = 22 \text{ pF}$$

$$L_{s2} = 33 \text{ nH}$$

$$R_{p3} = 150 \text{ Ohm}$$

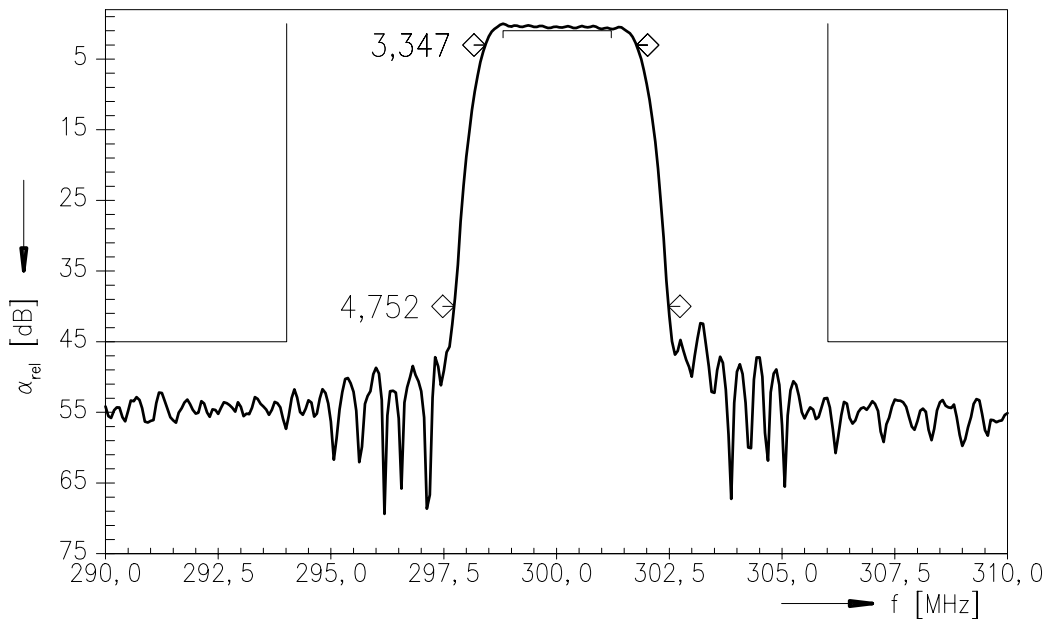
$$L_{s4} = 18 \text{ nH}$$

$$C_{p5} = 22 \text{ pF}$$

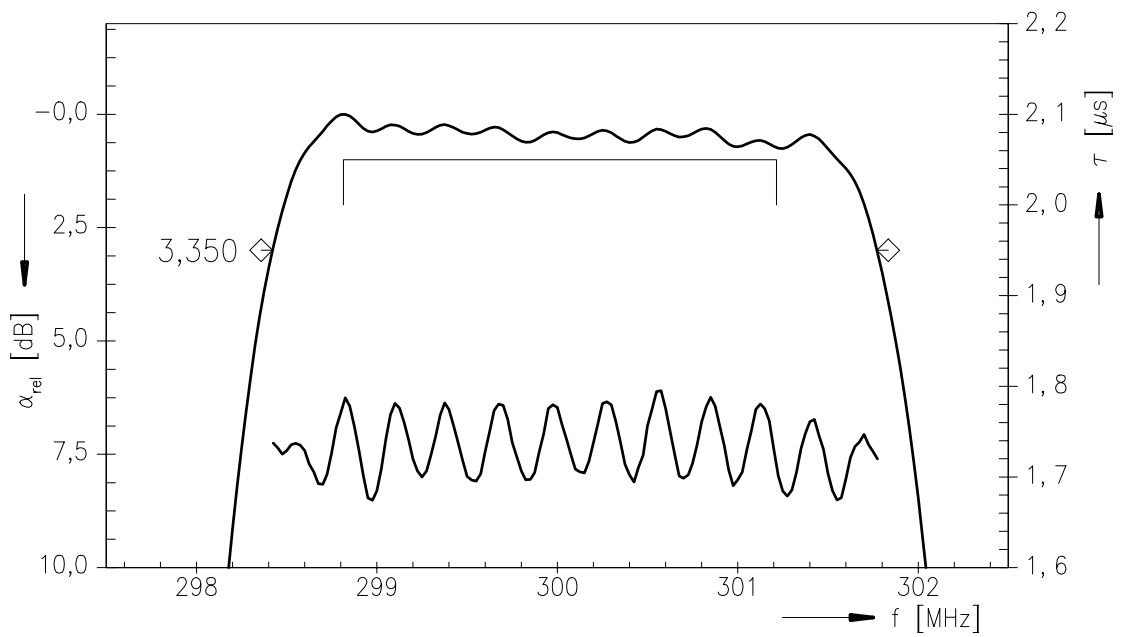


Data Sheet

Transfer function



Transfer function (pass band)





SAW Components

B3867

Low-Loss Filter

300,0 MHz

Data Sheet

Published by EPCOS AG

Surface Acoustic Wave Components Division, SAW MC IS

P.O. Box 80 17 09, 81617 Munich, GERMANY

© EPCOS AG 2003. Reproduction, publication and dissemination of this brochure and the information contained therein without EPCOS' prior express consent is prohibited.

Purchase orders are subject to the General Conditions for the Supply of Products and Services of the Electrical and Electronics Industry recommended by the ZVEI (German Electrical and Electronic Manufacturers' Association), unless otherwise agreed.

This brochure replaces the previous edition.

For questions on technology, prices and delivery please contact the Sales Offices of EPCOS AG or the international Representatives.

Due to technical requirements components may contain dangerous substances. For information on the type in question please also contact one of our Sales Offices.