

ANTENNA FILTERS

This is a compact and low insertion loss crystal filter for small antennas for removing interference stemming from nonlinearity of the receiver.

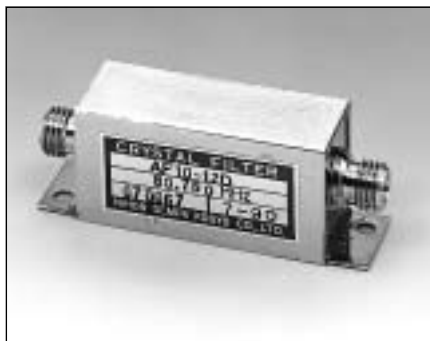
■ Features

- Can be manufactured for a wide frequency range (40~280 MHz)
- Compactness and light weight
- Low insertion attenuation (insertion loss)
- Excellent temperature characteristics

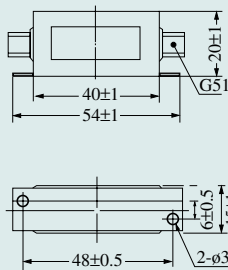
RoHS Compliant
Directive 2002/95/EC

■ Antenna filters

Model	Nominal Frequency (MHz)	Pass Bandwidth (kHz)		Attenuation Bandwidth (kHz)			Ripple (dB)	Insertion Attenuation (Insertion Loss) (dB)	Terminating Impedance (Ω // pF)	Operating Temp. Range (°C)	Type
		1.5dB	3dB	10dB	15dB	20dB					
AF10-12D	40~80		± 6			± 25	1	4	50//0	-10~+50	D-170
AF10-24D			± 12			± 50	2	4	50//0	-10~+50	D-170
AF10-12D	110~170		± 6			± 25	1	6	50//0	-10~+50	D-170
AF10-24D			± 12			± 50	2	6	50//0	-10~+50	D-170



D-170 (mm)



2 PCS of connectors (G53-1) are attached

Model	Guaranteed Attenuation
AF10-12D	$F_0 \pm 200\text{kHz}$ 20dB min.
AF10-24D	$F_0 \pm 500\text{kHz}$ 10dB min.

