

# D-Subminiature Right Angle PCB Mount Receptacle, .318" Footprint



## 82009 Series Metal Shell

- Fork boardlock provides positive PCB hold down during wave solder
- Compatible with automated assembly
- Integral ground strap ensures effective EMI/RFI suppression
- Easy one-step assembly to PCB

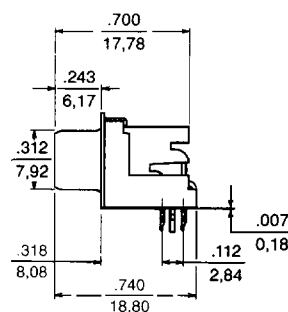
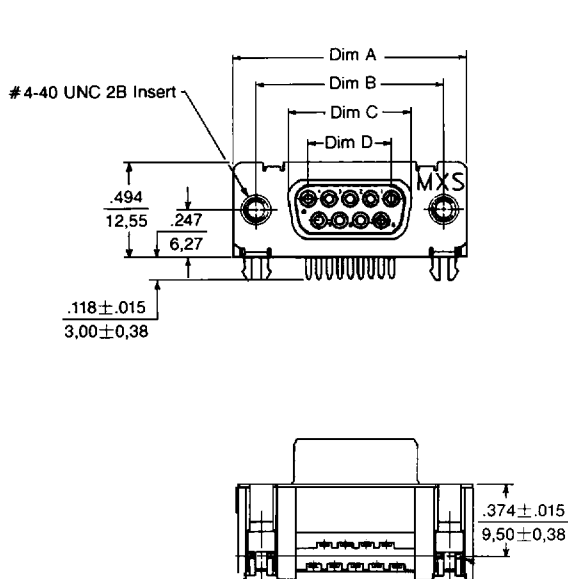
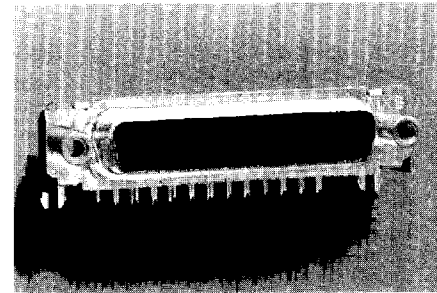
### Specifications:

**Housing:** Glass-filled UL 94V-0 PET material

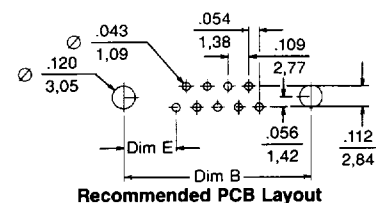
**Terminal:** Phosphor bronze

**Shell:** Tin-plated steel

**Plating:** Selective gold in contact area; tin lead on p.c. tails



inches  
mm



Recommended PCB Layout

### Dimensions

Circuit Size	Dim A	Dim B	Dim C	Dim D	Dim E
9	1.224	0.984	0.645	0.436	.274
	31.09	24.99	16.38	11.07	6.96
25	2.091	1.852	1.511	1.308	.272
	53.11	47.04	38.38	33.22	6.91

### Ordering Information

Order Number Formula	
82009 - B X X X	
<b>CKT SIZE</b>	<b>FACE MOUNTING HARDWARE</b>
• 0 = 9	• 1 = Fixed Round Insert
• 3 = 25	• 2 = Flush Insert
	• 3 = Fixed Hex Insert
	• 4 = Removable Hex Screwlock
<b>TERMINAL PLATING CODE</b>	
4 = .76µm/30µin. Gold Min.	
5 = .38µm/15µin. Gold Min.	

• U.S. Standard Product, available through Molex franchised distributors.

